

# Starting a collaboration session

Before logging in to any of No Magic's servers, you must:

- Have a user account on the server.
- Be sure the server is running.
- Ensure the server and the client application use the same Java version. Small Java version updates may differ.



The server Java version 1.8.0\_45 will work with the client Java version 1.8.0\_51.

To log in to a server

1. From the **Collaborate** menu, select **Login**. The **Login** dialog opens.
2. Login to a server:
  - To login using "username/password" authentication:
    - i. Click the **Login** tab.
    - ii. Type your user name and password.

**Login**

**Login to a server**  
Enter user name, password and server address to login to the server.

Login Single Sign On

User name: billybob

Password: ●●●●●●●●

Server name: 10.2.4.76

Server type: Teamwork Cloud

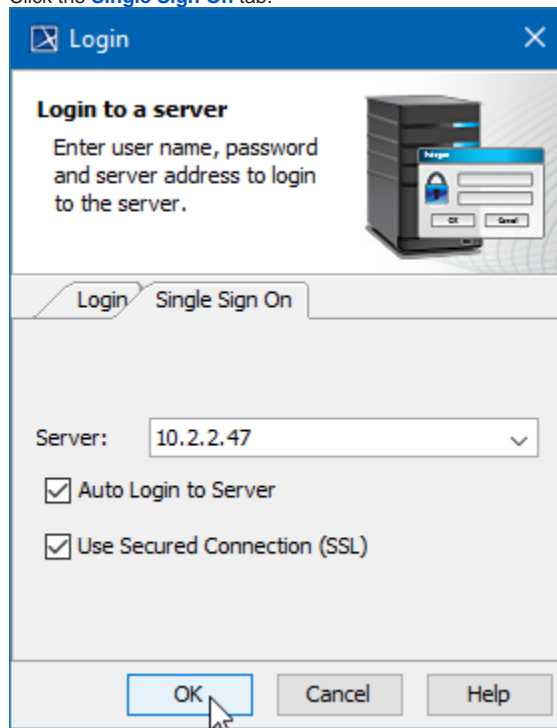
Auto Login to Server

Use Secured Connection (SSL)

OK Cancel Help

- For users having a single ID and password for multiple software systems (valid only for Teamwork Cloud Server):

- i. Click the **Single Sign On** tab.



3. Provide the server name (address) and select server type. If you need to specify a server port, type `<server name> : <port number>`, for example `10.2.2.47:3579`.



#### For Teamwork Cloud Server users

If a Single Sign On property is selected to login, the Teamwork Cloud Server is automatically selected as a type.

4. If you want the client application to remember your credentials and automatically log in to the server next time upon starting the client application, select the **Auto Login to Server** check box.
5. If you need to connect to the server using the SSL connection, select the **Use Secured Connection (SSL)** check box.



The SSL connection must be established on both the server and the client side.

6. Click **OK**.
7. Wait while you are connected to the server, and then you can start performing collaborative tasks.

To log out of the server

- From the **Collaborate** menu, select **Logout**.

#### Related pages

- [Single Sign-On Authentication](#)
- [Working with Teamwork Cloud projects](#)
- [Working with Teamwork Server projects](#)