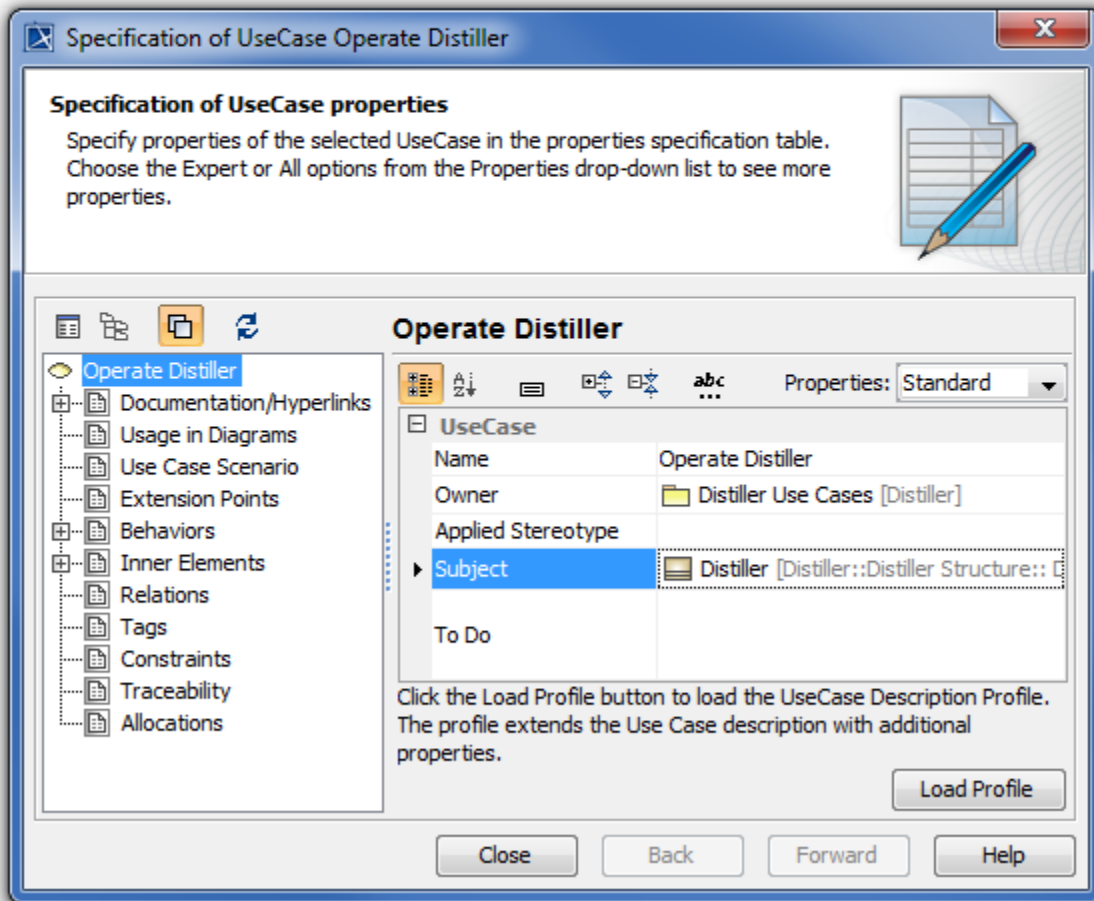
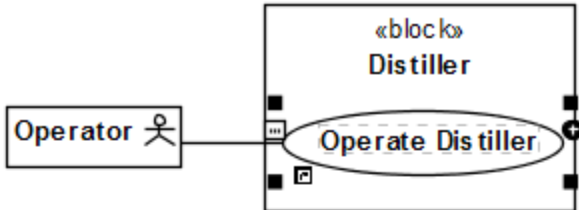


Specifying a Use Case subject

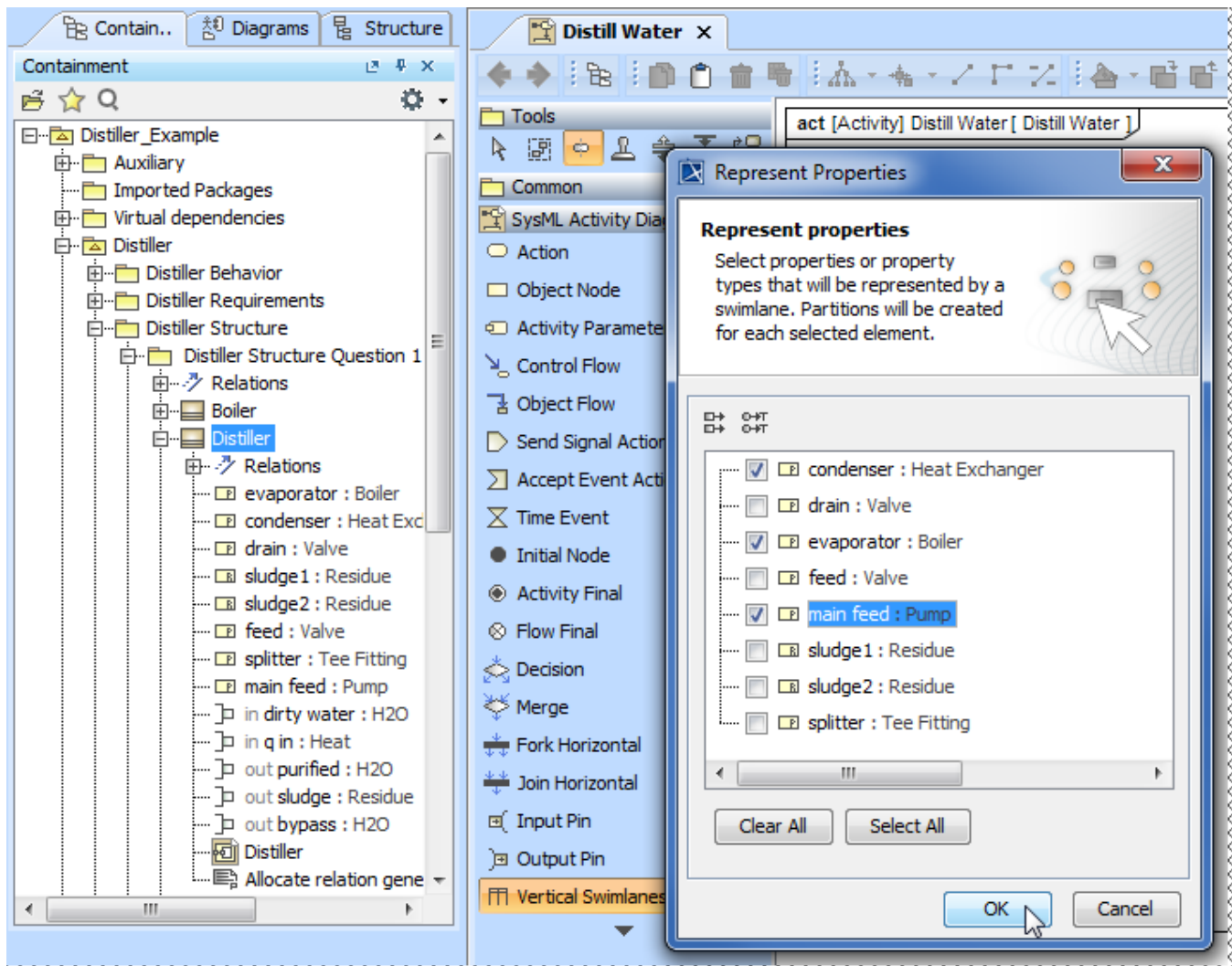
The subject of a Use Case represents a system under consideration to which that Use Case applies. The subject can be any element that may have a behavior, such as a Component or Class (SysML Block).

To specify the Use Case subject

1. Select the Use Case or its shape.
2. Drag it onto a Class, SysML Block, or Component shape. The Use Case becomes nested in that shape, and the appropriate model element is set as the Use Case subject.



Having a Use Case with the subject specified jumpstarts the creation of Swimlanes in the Activity diagram owned by that Use Case. In this case, you can select the subject properties you wish to be represented by the Swimlanes on that diagram.



Related pages

- [Extension Point](#)
- [Specifying a Use Case subject](#)
- [Use Case description profile](#)
- [Use Case Scenario sketch](#)