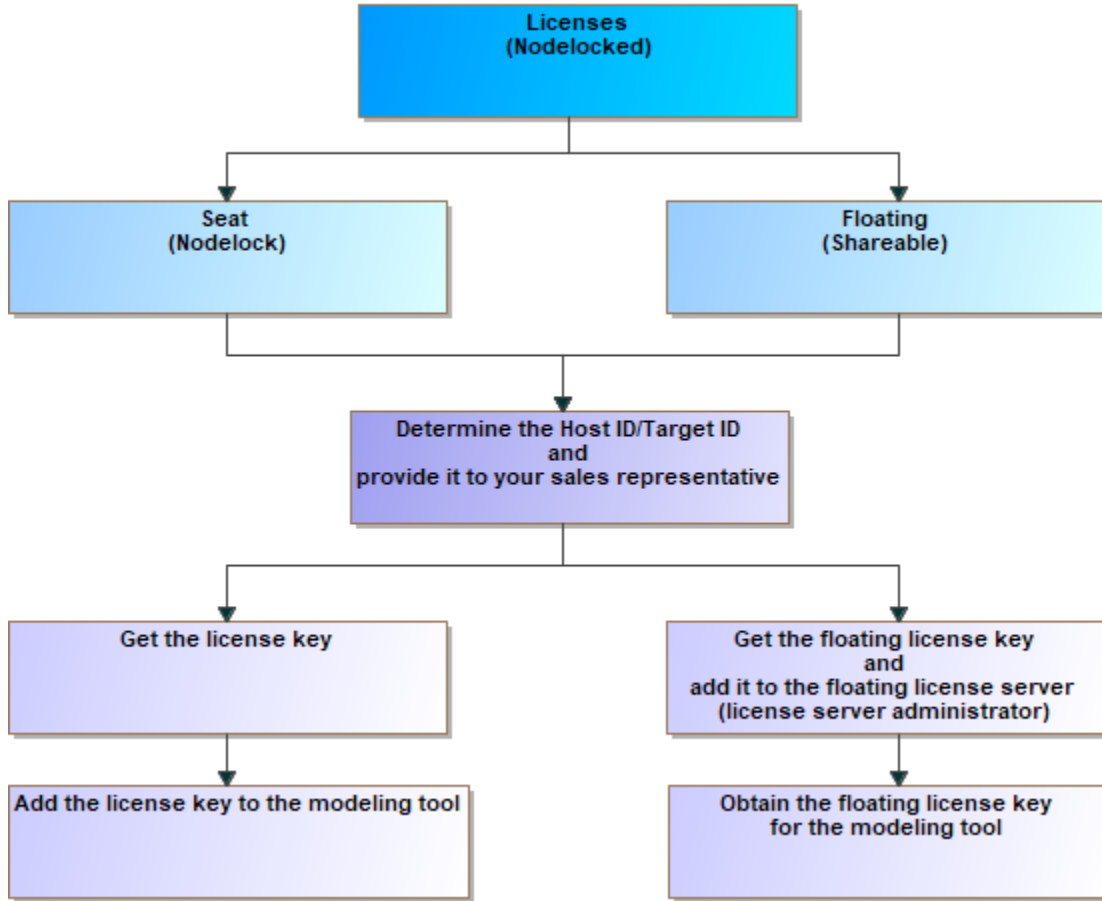


Modeling tools and plugins licensing

The product license is identified by the license key. There are two types of license keys:

- seat (Nodelock)
- floating (Shareable)

Additionally, special licenses for the academic community are available: <https://www.nomagic.com/services/academic-research>.



Licensing scheme

Licensing workflow

Seat license

1. Determine your Host ID/Target ID.
2. Provide it to your sales representative.
3. Get a license key.
4. Add a license key to the modeling tool.

Floating license

1. Determine your Host ID/Target ID.
2. Provide it to your sales representative.
3. Get a floating license key and add it to the floating license server.



Typically, this step is performed by the license server administrator.

4. Obtain a floating license key for a modeling tool.