

# Customizing diagram palette

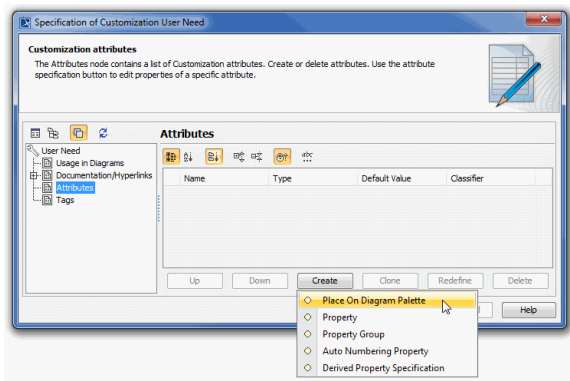
Having a new DSL element type you can simply add the appropriate button to the palette of any desired diagram type. For this, you must make certain changes in the customization profile.


To add the button for creating a DSL element on the palette of relevant diagram type

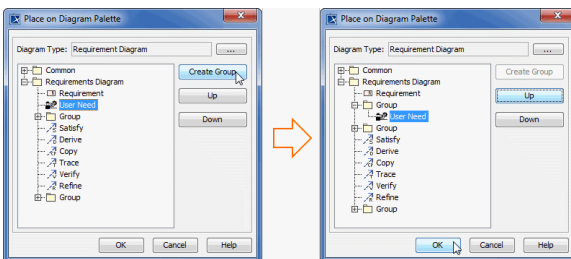
1. Open for edit the customization profile.
2. Create a Profile diagram or just open an existing one.
3. Create a customization.
4. Set the DSL element type as the customization target.


Drag the DSL element type to the shape of the newly created customization element.

5. Create the **Place on Diagram Palette** attribute for the customization.
  - a. Open the Specification window of the customization element.
  - b. Select **Attributes** on the left side of the window.
  - c. Click the **Create** button and then select **Place on Diagram Palette** (see the following figure).
  - d. Type the new attribute name (this is optional, since the name is not visible anywhere in UI, except the attribute Specification window).



6. In the Specification window of the **Place on Diagram Palette** attribute, select the cell of the the **Place** property value, and click .
7. In the open dialog, select the diagram type, whose palette you want to customize.
8. In the same dialog, with the help of the **Up** and **Down** buttons specify the position of the new button on the palette.
9. If you want to add several new buttons and organize them into a group on the palette, create a new Group package by clicking the **Create Group** button (see the screenshot on the left). As a result, the button of the DSL element type appears under the Group package (see the screenshot on the right).



 If you want to undo the creation of the group, simply click the **Up** or **Down** button.

10. Close the dialogs and save the changes.
11. Reopen the diagram with customized palette.

As a result, you can see the new button on the diagram palette. If you work in a [collaborative environment](#), other users, who work with the same project or the projects that use the same customization profile can see the new button instantly after updating their projects.

If you repeat the procedure to add more buttons within the same group on the diagram palette, you can see the appropriate changes as shown in the following figure.

