

# Publishing an OSLC resource

No Magic modeling tools with Cameo Data Hub plugin makes it possible to link and share data using Open Services for Lifecycle Collaboration (OSLC) integration. In addition, you can publish the models you work with to Cameo Collaborator for Teamwork Cloud as OSLC resources. This allows you to see the OSLC UI previews of model elements in the environment of a synchronized tool, e.g., Doors Next Generation.



## Publishing prerequisites

To be able to publish models to Cameo Collaborator for Teamwork Cloud:

- [The Cameo Collaborator Publisher plugin must be installed in your modeling tool.](#)
- [You must log in to Teamwork Cloud.](#)
- You need to have [user permissions](#) to publish a models.
- The model you are trying to publish must be stored in Teamwork Cloud. If you want to publish a local model, first [add it to Teamwork Cloud](#).
- If you intend to publish a large model, [increase the default JVM heap size](#) of your modeling tool (**Maximum Heap Size** or **Xmx** property).

To publish a model as an OSLC resource

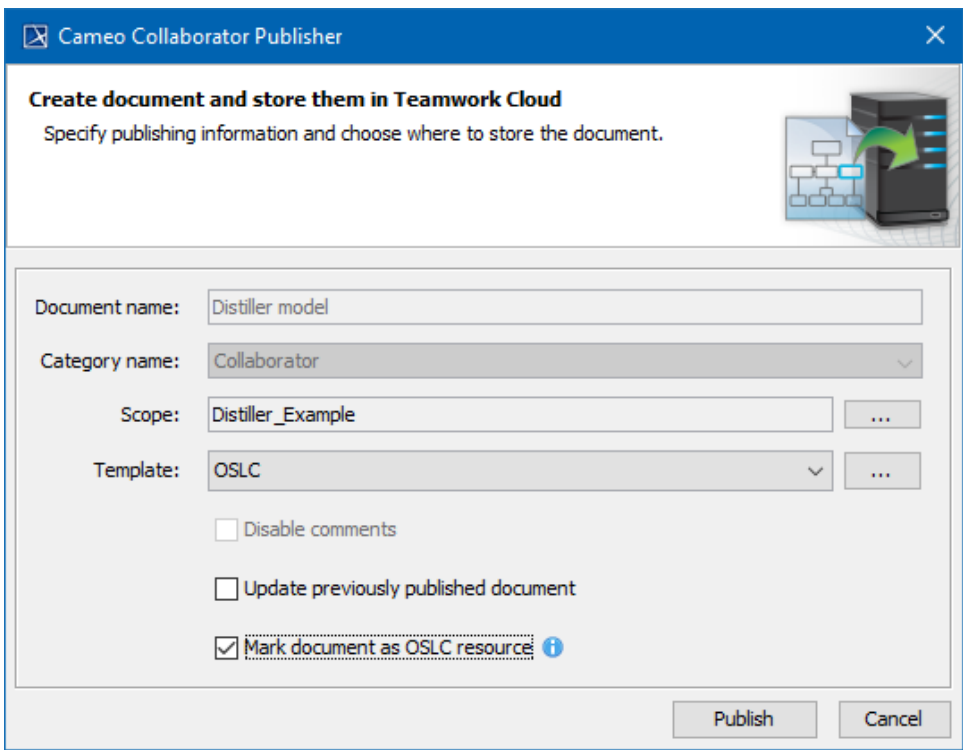
1. Start your modeling tool and open the model you want to publish as an OSLC resource.
2. In the main menu, select **Tools > Cameo Collaborator > Publish to Teamwork Cloud**.
3. In the **Cameo Collaborator Publisher** dialog, specify the following properties:
  - **Document name** - must be the same as the name of the model you are going to publish.
  - **Category name** - select the Teamwork Cloud category where the published document will be stored.
  - **Scope** - click  and select the Package or several Packages containing the data you want to publish.
  - **Template** - select the **OSLC** template (recommended).



## Selecting template

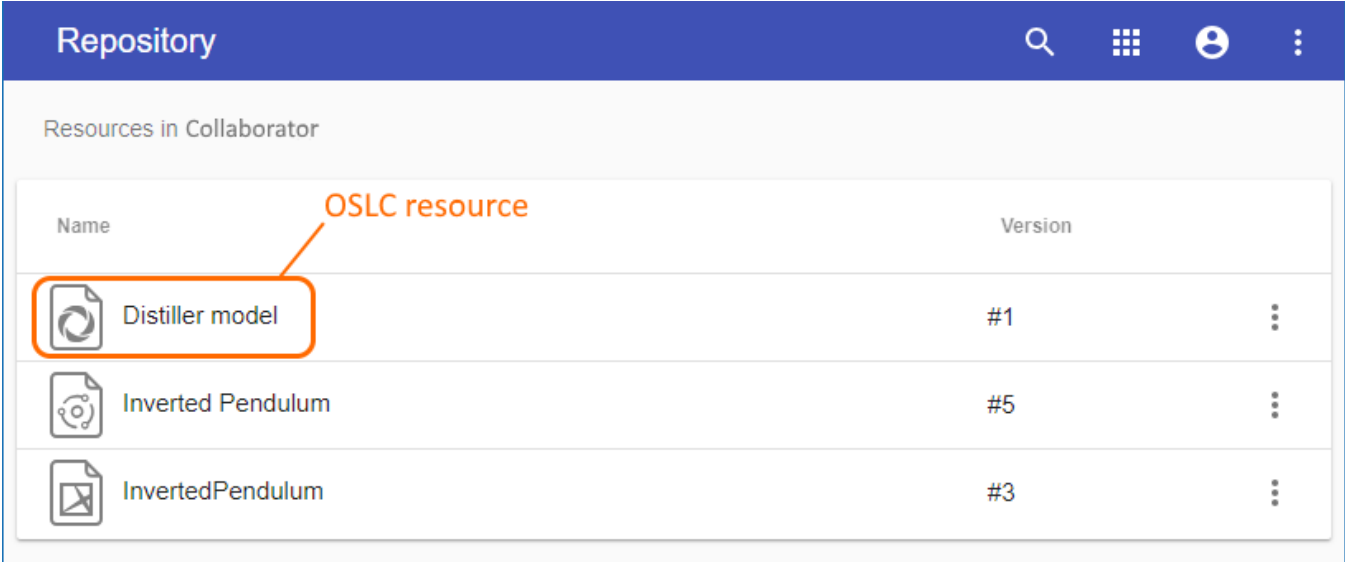
You can also select a custom template used or stored in your model. If your custom template has several views, only the first view will be published.

4. In the same dialog, do the following:
  - Select the **Update previously published project** check box if you want the document to replace a previously published document with the same name.
  - Select the **Mark document as OSLC resource** check box.



5. Click the **Publish** button.

Wait until you get the message that the model is successfully published, as publishing a large model may take some time. Now you can [open Cameo Collaborator for TWC](#) and find the OSLC resource in the category you specified when publishing.



An OSLC resource in the Cameo Collaborator for TWC repository (Resources app).