

# What's New to UPDM 3 in 18.5 FR

## UPDM 3 Plugin (Technology Preview)

Released on: February 20, 2017

UPDM 3 Plugin 18.5 adds brand new features to enhance your enterprise architecture (EA) modeling experience in MagicDraw. 18.5 provides you with the opportunity to try out the new Select Framework Views dialog which allows you to create your own project structure. In addition, you can view and evaluate the new Security Domain Enhancements along with the new Taxonomy tables in the UAF Framework, and integration with Data Modeler. These are several of the new features added to UPDM 3 Plugin which assure us that your EA modeling experience will be enhanced, and allow you to become even more productive. Download it today at [nomagic.com](http://nomagic.com) or contact your sales representative, and don't forget to give us your feedback on [Twitter](#) or [Facebook](#).

### News of earlier versions

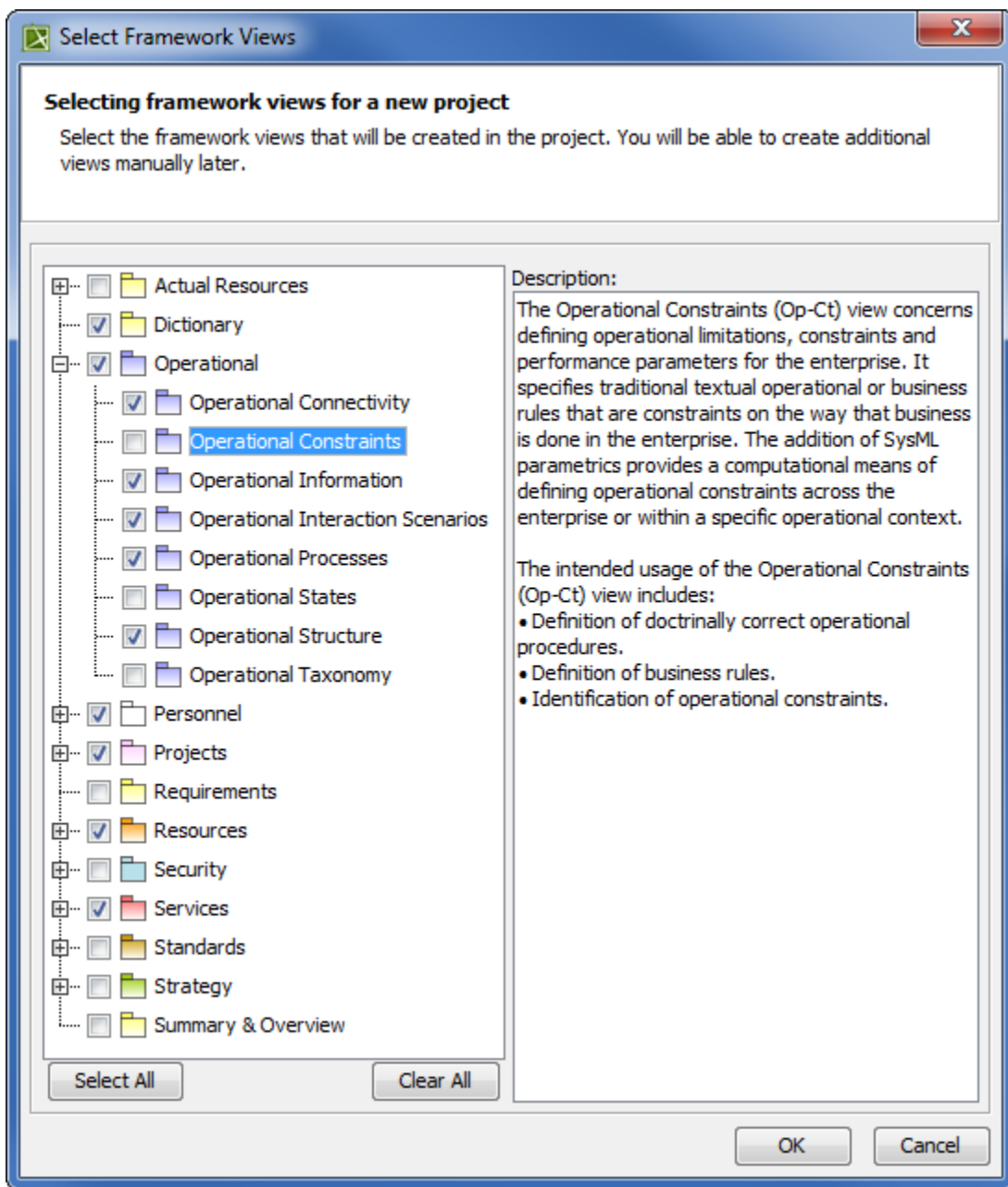
- [UPDM 3 18.4](#)
- [UPDM 18.3](#)
- [Product News Archive](#)

- [Select Framework Views for a New Project](#)
- [New UAF Architecture Framework](#)
- [Security Domain Modeling Enhancements](#)
- [Taxonomy Tables in the UAF Framework](#)
- [Integration With Data Modeler](#)
- [Integration with Cameo Concept Modeler Plugin](#)
- [Reverse Information Flow Direction](#)
- [Process Shape for the Operational Activities](#)
- [Other Enhancements](#)

---

### Select Framework Views for a New Project

When you create a new project, you can now easily define its structure by choosing only the views that are truly necessary. You can achieve this by using the **Select Framework Views** dialog.



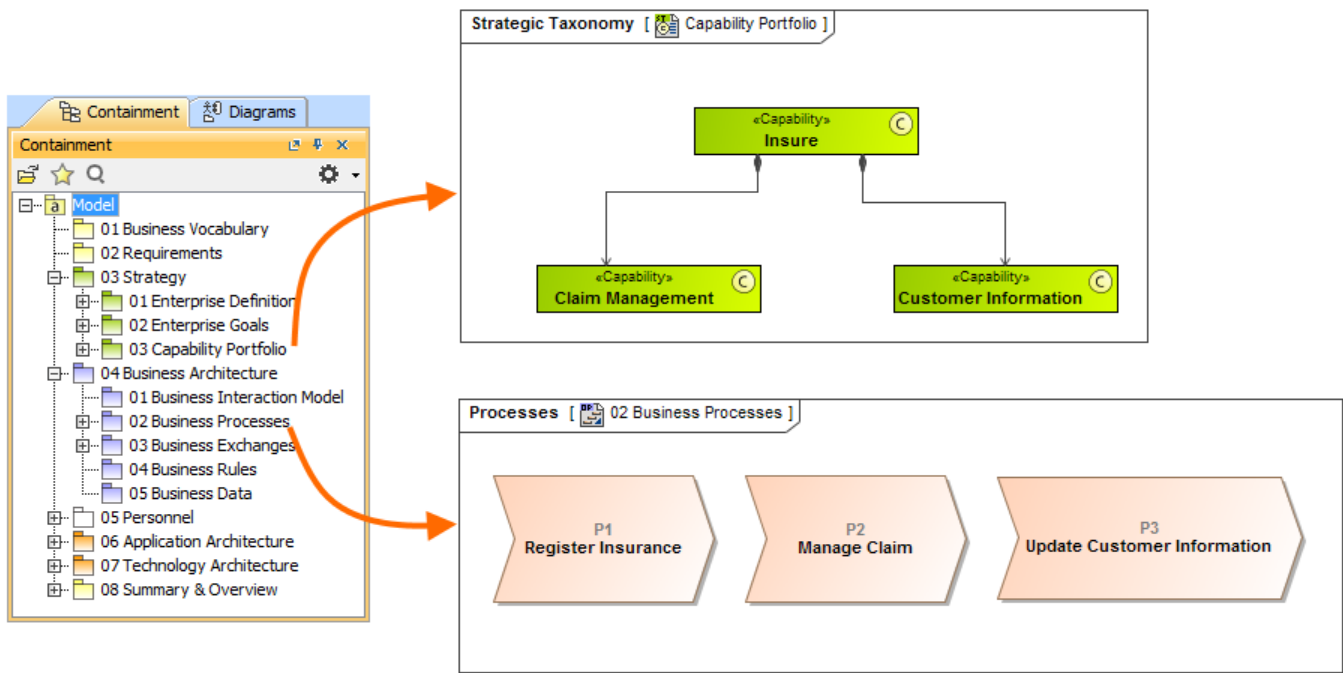
The Select Framework Views dialog

[Back to top](#)

## New UAF Architecture Framework

The new UAF Architecture Framework is introduced. This framework provides a simplified UAF standard version, and is dedicated for the industry and corporate sector.

The updated framework provides UAF standard integrated with the process and data modeling capabilities.



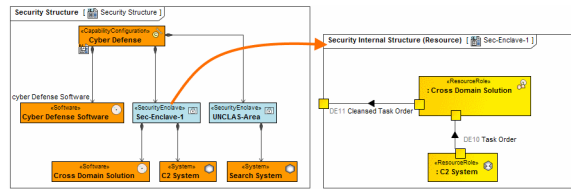
The Containment tree shows the predefined UAF Architecture Framework structure. The couple of sample diagrams comes from the specific locations in the predefined structure.

[Back to top](#)

### Security Domain Modeling Enhancements

In this version, we have enhanced the security domain modeling. The following diagrams are added:

- Security Internal Structure (Operational) diagram
- Security Internal Structure (Resource) diagram
- Role-based Security Connectivity diagram
- Security Affect Traceability diagram
- Security Mitigation Traceability diagram



Also, the security domain now can be modeled not only in UAF, but also in DoDAF, MODAF, NAF, and NAF4 frameworks.

Criteria					
Scope (optional): Security [1] Filter: Q-					
#	Exchange ID	Resource Exchange Item	Sending Resource	Receiving Resource	classification
1	RI13	DE10 Task Order	C2 System	Cross Domain Solution	Sec27
2	RI16	DE11 Cleansed Task Order	UNCLAS-Area	Search System	UNCLAS
3	RI14	DE11 Cleansed Task Order	Cross Domain Solution	Sec-Endave-1	UNCLAS
4	RI15	DE11 Cleansed Task Order	Sec-Endave-1	UNCLAS-Area	UNCLAS

Legend	
Mitigates	
Cyber Defense [Security Structure]	
commander : SAR C2 Manager	
cyber Defense Software : Cyber Defense Software	
mitigator : Communication Redundancy	
Bad Weather Conditions	
Loss of Radio Communication	
	Security Traceability

An example of the new security domain diagrams

[Back to top](#)

### Taxonomy Tables in the UAF Framework

In this release, the new Taxonomy tables are introduced into the UAF Framework. You can now create the following taxonomy tables:

- Strategic Taxonomy Table
- Operational Taxonomy Table
- Service Taxonomy Table
- Personnel Taxonomy Table
- Resource Taxonomy Table
- Security Taxonomy Table
- Project Taxonomy Table
- Standard Taxonomy Table

#	Organization	Person	Post	Responsibility	Documentation
1	Maritime rescue team				at is involved with the special operations of search, rescue and
2	Marine Radio Operator				Marine radio operator operates radio equipment in order to communicate with ships, helicopters, offshore oil rigs, logging camps and other remote operations. He also broadcasts weather reports and warnings.
3	Qualified Helo Pilot				Qualified Helo Pilot is a member of Maritime Rescue Team. He flies single- and multi-engined helicopters.

An example of the Taxonomy table

With these tables, you can easily create and describe major domain elements.

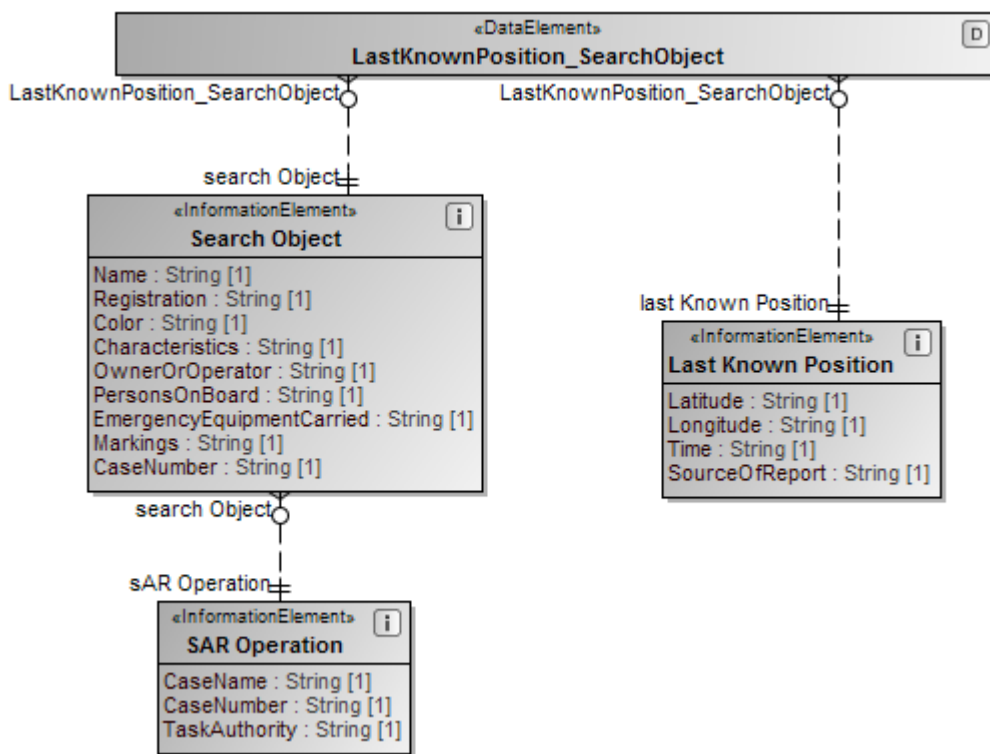
Furthermore, using the Hierarchical Display Modes, the content of any table can now be hierarchically displayed in a tree-like structure.

[Back to top](#)

### Integration With Data Modeler

You can use Integration with Data Modeler for modeling the data structures. This approach is now available for UPDM 3.

The <<Entity>> stereotype is applied to the newly created *Data Element* and the *Information Element* when the **Map Information and Data Elements on ERD Entities** project option is set to *True*.



An example of the ER diagrams created after the integration with Data Modeler

[Back to top](#)

### Integration with Cameo Concept Modeler Plugin

Starting with this version, the Cameo Concept Modeler Plugin (CCM) is integrated into the Cameo Enterprise Architecture, UPDM2, and UPDM3 plugins. This plugin replaces the Soa+ Plugin.

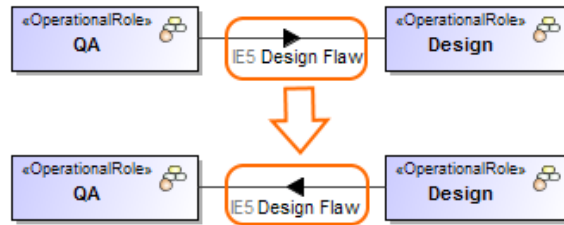
You can make the ontology modeling available in the UPDM projects by creating the **Concept Modeling Diagram** from the **Create Diagram** dialog. After the diagram is created, the CCM profiles are loaded, and CCM features are available in the project.

Please note, the Autostyler plugin is not included, but it is available in the Resource/Plugin Manager.

[Back to top](#)

## Reverse Information Flow Direction

You can now reverse the *Operational Exchange* and the *Resource Exchange* directions. In a diagram, right-click to select the flow, and, from the shortcut menu, choose **Refactor > Reverse Flow Direction**. The flow directions are updated in all the related diagrams.

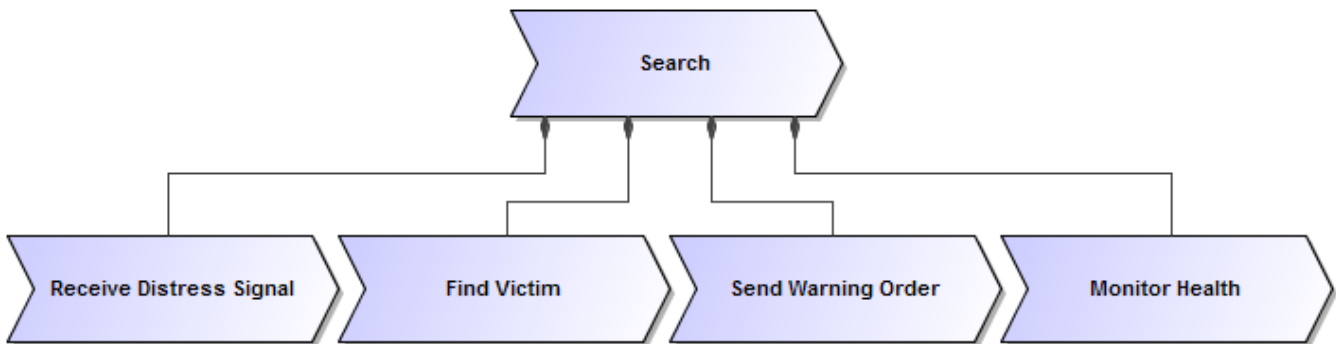


An example of the reversed Operational Exchange direction

[Back to top](#)

## Process Shape for the Operational Activities

*Operational Activities* can now be represented by the Process shape in a diagram. The Process shape is available for the *Operational Activities* that own the Process diagrams. If you need to show the *Operational Activity* as a Process shape, set the **Show Stereotype** symbol property to **Show As Image**.



An example of the Operational Activities represented by the Process shape

[Back to top](#)

## Other Enhancements

- The following diagram changes are introduced:
  - The Project Connectivity is now represented by the Class diagram.
  - The Project Connectivity matrix type is now changed to Project Responsibility Traceability.
- Now, element collection according to the selected criteria is improved for all UPDM matrices.
- The following tables are enhanced:
  - SV-7
  - NSV-7
  - P1
  - Typical / Actual measurement

[Back to top](#)