

# 19.0 SP1 LTR Version News

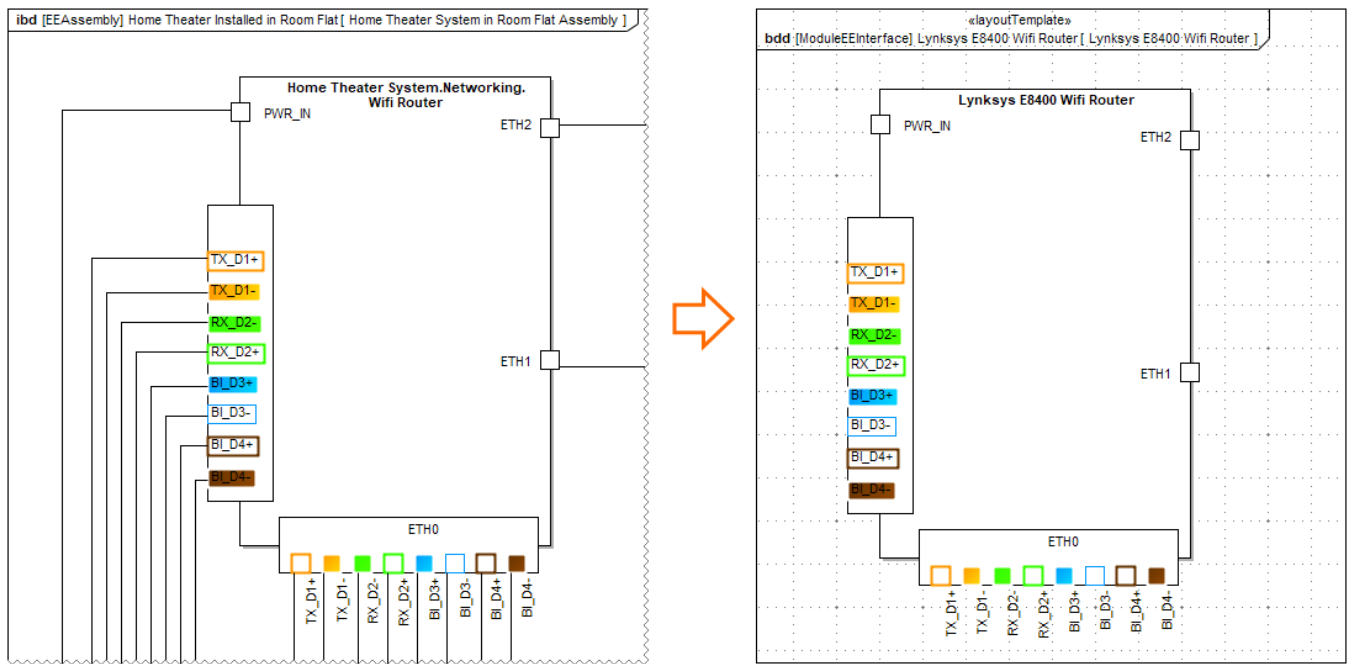
## SysML Plugin

Released on: November 12, 2018

This release of the SysML Plugin features bug fixes, along with some new features. Download it today at [nomagic.com](http://nomagic.com) or contact your sales representative, and don't forget to give us your feedback on [Twitter](#) or [Facebook](#). Also, please check the latest [documentation](#) and additional [resources](#).

### Deriving Layout Templates from a Composite Structure Diagram/Internal Block Diagram

Consider the effort it takes to perfect the layout of parts and their ports in Internal Block Diagrams. It would be more efficient to reuse the same layouts in other diagrams of your model. Now you can create layout templates directly from Internal Block Diagrams with just a few clicks.



Layout template created from an Internal Block Diagram.

[Learn more about layout templates >>](#)

### Displaying Related Elements for Parts with Ports

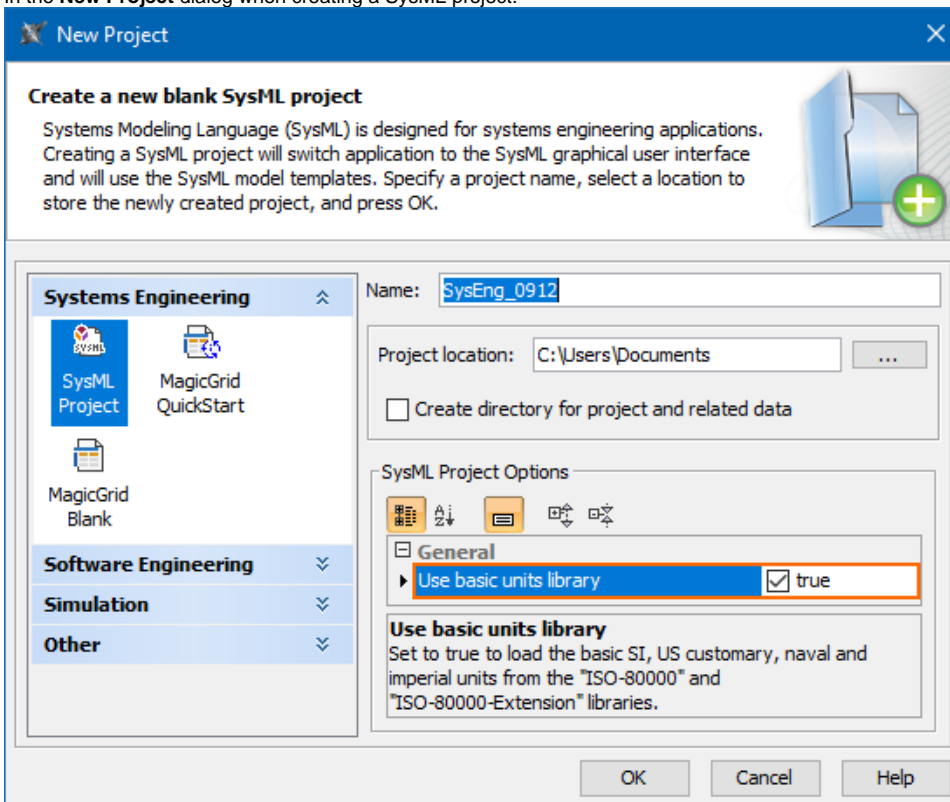
The enhancement of the Display Related Elements includes the following capabilities:

- The indirectly related parts are available in the **Display Related Elements** dialog.
- The indirectly related parts are shown after the drag-and-drop action, when you hold the dragged element for a while before releasing it.

### Loading the basic units from the ISO-80000 library

You can load the ISO-80000 library and the basic units from the ISO-80000 libraries from more than one place:

- In the **New Project** dialog when creating a SysML project.



- You can load it manually from the value properties smart manipulator in the existing project, where the library was not loaded.

#### Other

- Copy-Paste functionality is now improved. When you copy one cell and paste it into another cell, the element references are created for the existing model element. When you want to clear the pasted column (by pressing Delete), only the references (if editable) will be removed.



You can check [the list](#) of publicly available issues or your own reported issues fixed in SysML Plugin 19.0 SP1.  
**Note:** You will be required to login. Use the same username and password as for [www.nomagic.com](http://www.nomagic.com).

#### The latest SysML Plugin documentation

- [SysML Plugin 19.0](#)

#### News of earlier versions

- [SysML Plugin 19.0 LTR](#)
- [SysML Plugin 18.5 FR](#)
- [SysML plugin 18.4 FR](#)
- [SysML Plugin 18.3 FR](#)
- [SysML Plugin 18.2 FR](#)
- [SysML Plugin 18.1 FR](#)
- [SysML Plugin 18.0 LTR](#)