

# Resource Manager

## On this page

- [Getting started with Resource/Plugin Manager](#)
- [Adding resources from file](#)
  - [Adding selected resources from a local file system or network share](#)
  - [Adding bundled resources from a local file system or network share](#)
  - [Adding resources from a web server](#)
- [Distributing resources using .rdzip](#)
- [Building your own custom resources file](#)

Resource Manager functionality allows you to manage local resources (installed with a modeling tool or downloaded separately) and resources available on the server/shared repository.

With Resource Manager, you can manage different types of resources, such as Profiles, Plugins, Templates, Language resources, Case studies /examples, Custom diagrams, and others.

The Resource Manager functionality allows you to:

- Install the resources
- Update the resources
- Distribute needed resources internally (including the company's developed resources)
- Check dependency of a resource

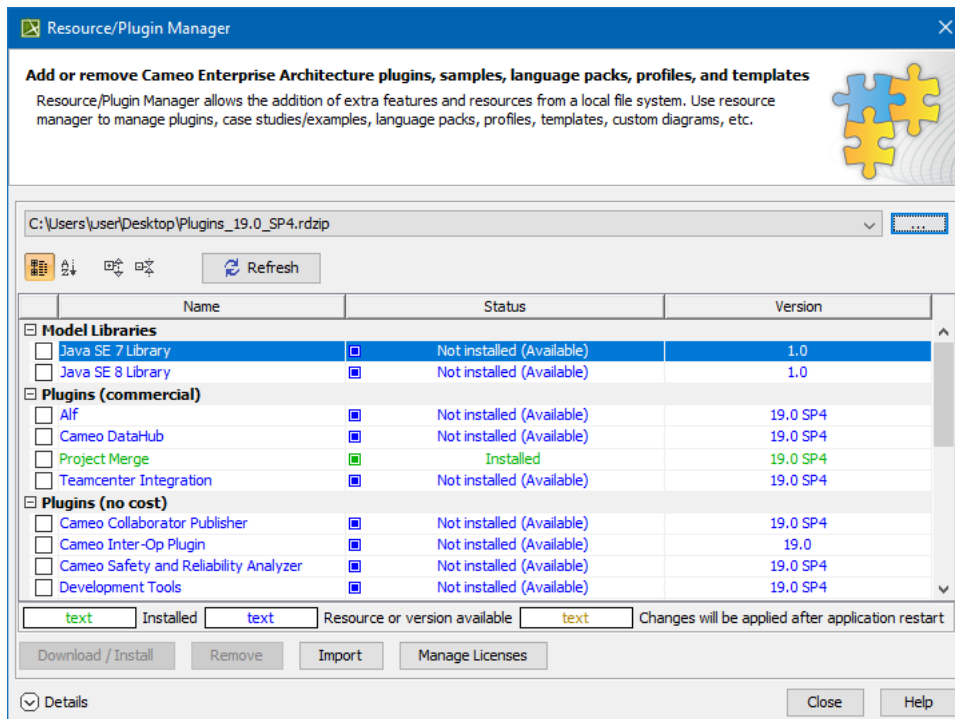
The **Resource/Plugin Manager** helps you manage the resources. You can add the resources to your modeling tool from the following locations:

- Local file system
- Network share/web server

## Getting started with Resource/Plugin Manager

To open the Resource/Plugin Manager dialog

- From the **Help** menu, select **Resource/Plugin Manager**.



The Resource/Plugin manager dialog.

To see the resource details

1. In the **Resource/Plugin Manager** dialog, select the necessary plugin or other resources.
2. Click **Details**. The dialog expands with the resource description at the bottom.

## Adding resources from file

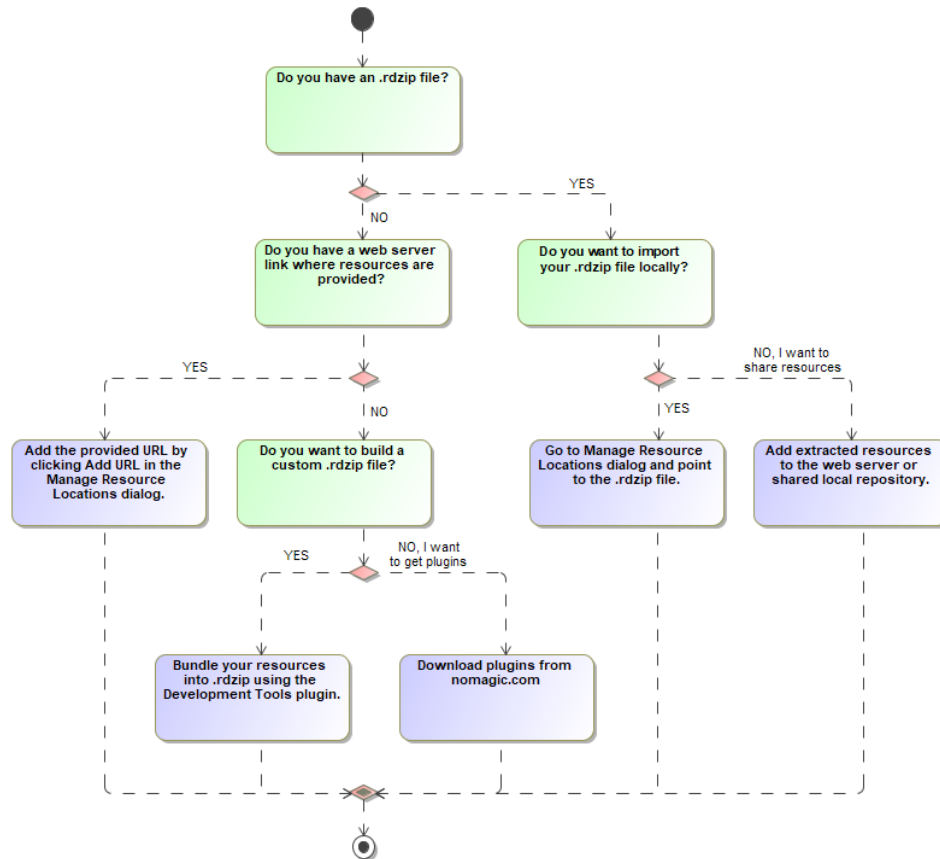
### ✓ How can I get the latest plugins?

You can download an all plugins bundle (.rdzip file) consisting of resources and a descriptor file from [nomagic.com](http://nomagic.com) (please log in to see the Download area <Download All-In-One Plugin Pack>). The obtained .rdzip file can then be shared internally. What is more, you can import archived resources (.zip) from a server/shared local repository (containing both resources and a descriptor file) your admin gave a link to.

⚠ The resource distribution file (.rdzip) is already added to a specific folder (<install.root>/data/resourcemanager/distribution) for the Magic Software Engineer, Magic Systems of Systems Architect, and Magic Cyber Systems Engineer modeling tools. This location is set by default.

There are three ways to install resources using **Resource/Plugin Manager**:

- install individual archived resources (.zip).
- install bundled resources from the resource distribution file (.rdzip) located on a local file system.
- obtain resources using a link from the web server pre-populated with resources and their descriptor file from the extracted resource distribution file (.rdzip).



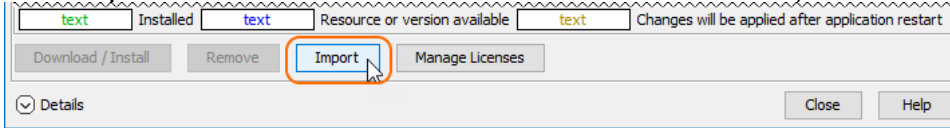
Visualization of Resource/Plugin Manager workflow.

## Adding selected resources from a local file system or network share

You can import individual resources in a .zip format using the **Import** functionality. Separate plugins can be downloaded from [nomagic.com](http://nomagic.com) or obtained from the network share.

To add selected resources

1. Open **Resource/Plugin Manager**.
2. Click the **Import** button at the bottom of the window and then select the resource in the **.zip** format to add to your modeling tool.



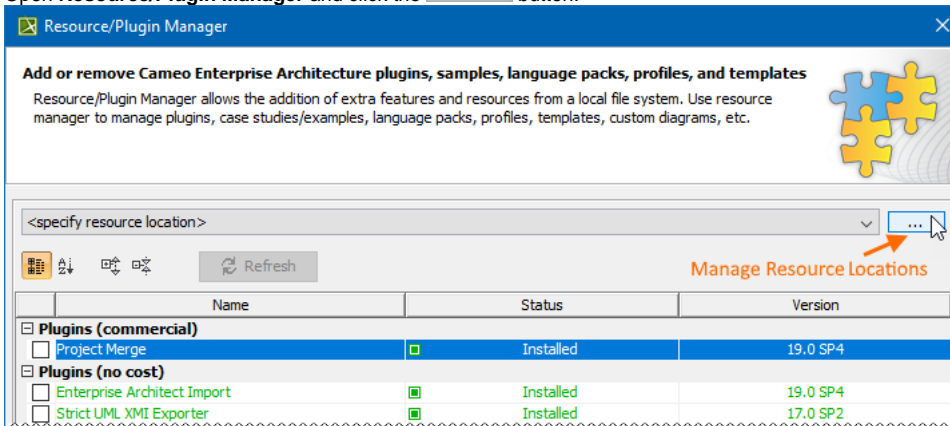
3. Click **Open**. The selected resource is imported.

## Adding bundled resources from a local file system or network share

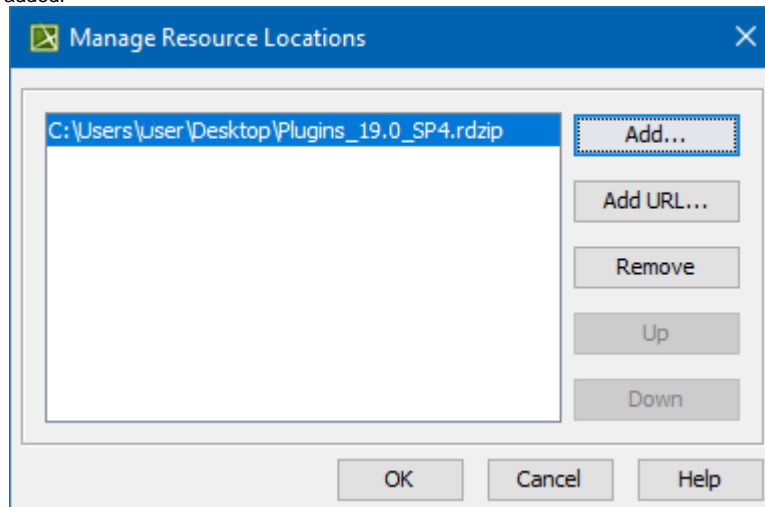
You need to specify a location of the resource distribution file on a local file system/network share or point directly to the **.rdzip** file in the **Manage Resource Locations** dialog (used for defining locations from which resources are added) to import bundled resources.

To specify a resource location/file

1. Open **Resource/Plugin Manager** and click the **...** button.



2. In the **Manage Resource Locations** dialog, click **Add**. The **Select Resource Location or Distribution File** dialog opens.
3. Specify a resource location on your file system/network share or a resource distribution file (**.rdzip**) and click **Open**. The resource location is added.



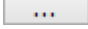
4. Click **OK** to add a resource.

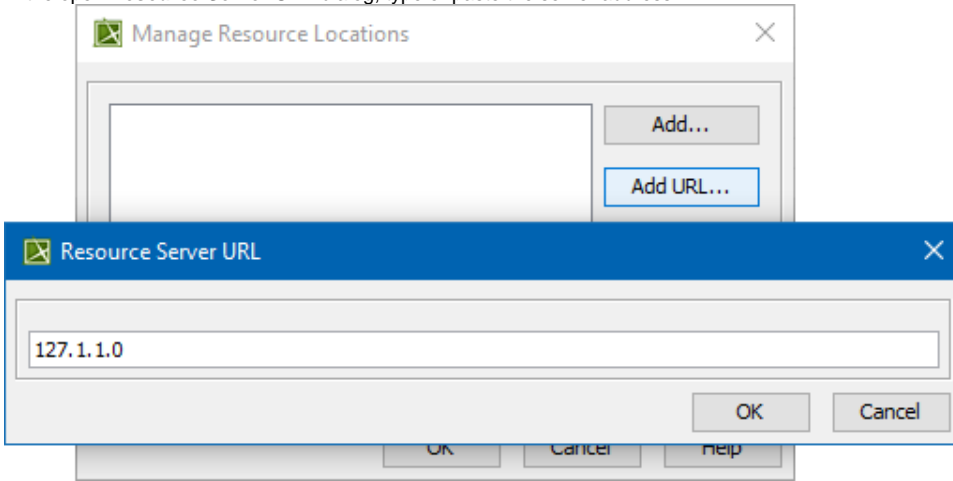
You can manage the list displayed in the **Manage Resource Locations** dialog by adding, removing, or reordering the resource locations.

## Adding resources from a web server

You can also obtain the needed resources from a web server if you do not have the **.rdzip** file but have been provided with an URL.

To specify the server where the resources and their descriptor file are located

1. Open **Resource/Plugin Manager** and click .
2. In the **Manage Resource Locations** dialog, click **Add URL**. The **Resource Server URL** dialog opens.
3. In the open **Resource Server URL** dialog, type or paste the server address.



4. Click **OK**.

The resources from the selected location are listed in the **Resource/Plugin Manager**.

## Distributing resources using *.rdzip*

Once you have obtained the resource distribution file (*.rdzip*) from [nomagic.com](http://nomagic.com), you can share resources internally, e.g., on a company level.



The resource distribution file (*.rdzip*) contains the resources and their descriptor file. If you are using the web server for the resource distribution, make sure that the resource distribution file (*.rdzip*) is extracted into the intended server location.

## Building your own custom resources file

You can bundle your resources into one *.rdzip* file and then distribute that file on a local file system, network share, or web server.

To build the resources file, you need to install the **Development Tools** plugin. The **Development Tools** plugin can be downloaded from [nomagic.com](http://nomagic.com) individually and then installed using **Resource/Plugin Manager**, or it can be found in the resource distribution file (*.rdzip*).



For more information about building the resource distribution file, read [Building a resource distribution file](#).

### Related pages

- [Distributing Resources](#)
- [Distributing Profiles](#)
- [Building a resource distribution file](#)