

Importing instance specifications when importing schema classes

When you are importing table headings from an Excel or CSV file as a schema class, you can also import the rows in the file as instance specifications of the schema class at the same time. You can use the **Import Table Heading from Excel** menu in the **Import Data from Excel and Create Mapping** dialog.

How to import instance specifications when importing a schema class

1. Click **File** on the MagicDraw main menu and click **Import From > Excel/CSV File**. The **Import Data from Excel and Create Mapping** dialog will open and the **Import Table Heading from Excel** menu will be selected by default, see figure below.

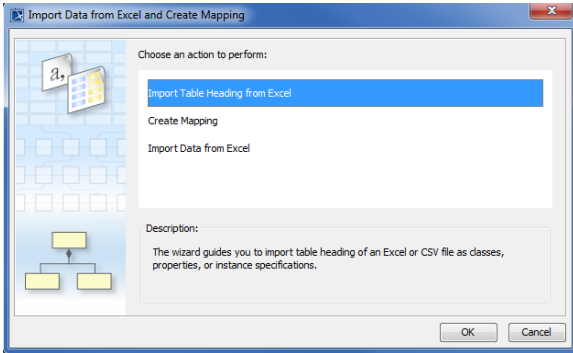


Figure 1: Importing Instance Specifications through the Import a Schema Class Option in the Wizard

2. Click **OK**. The **Import Table Heading from Excel** wizard will open, see figure below.

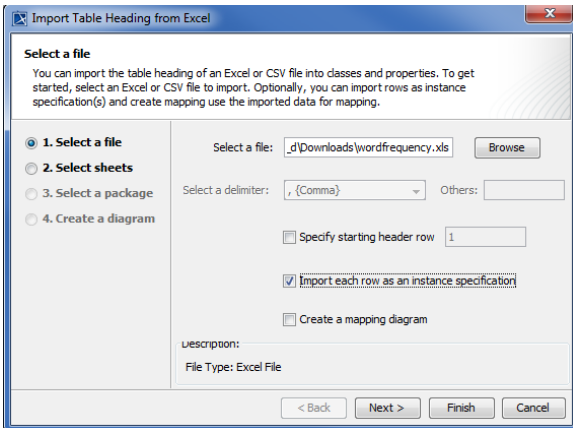


Figure 2: Importing Instance Specifications Using the Import Table Heading from Excel Wizard

3. Click **Browse** to find an Excel or CSV file whose data you want to import both as schema class and instance specifications of the schema class.
4. Select a delimiter (if you select a CSV file) from the **Select a delimiter: Others** drop-down list or **Comma** will be selected as the delimiter by default. Skip this step if you select an Excel file.
5. Select the **Import each row as an instance specification** check box.
6. Click either (i) **Finish** to start the import or (ii) **Next >** if you want to select a package as the owner of the imported class and its instance specifications. Otherwise, **Model** will be selected as the default package. Excel Import will import data from the file both as schema class and its instance specifications, see figure below.

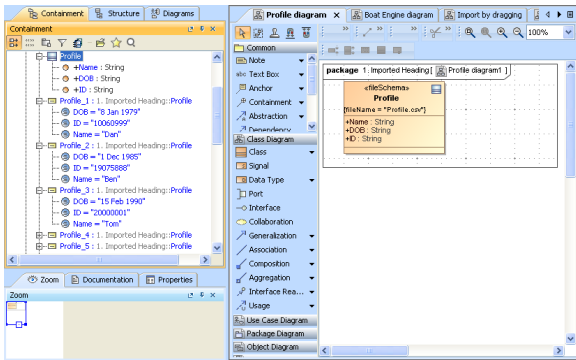


Figure 3:Importing Schema Class and Instance Specifications from CSV