

2021x Refresh2 Version News




Released on: December 3, 2021


The 2021x Refresh2 introduces performance improvements to both the client-side and Teamwork Cloud-side as well as integration, general modeling, and collaborative modeling enhancements.


On the integrations side, ReqIF Import/Export improvements come into effect. For general modeling, this release presents improvements to Structured Expressions.


Finally, collaborative modeling has been extended to enable users to automatically clone used projects together with the main project.


To download the latest MagicDraw version, see [Downloading installation files](#). Don't forget to give us your feedback on [LinkedIn](#), [Twitter](#), or [Facebook](#).

**2021x Refresh2 HotFix 5 available**
Due to Cassandra 3.11 approaching its end of life, the 2021x Refresh2 HotFix 5 has been released on April 21, 2023. This HotFix addresses the issue by supporting Cassandra 4 and introduces a number of bug fixes and performance improvements.

**2021x Refresh2 Hot Fix 4 available**
2021x Refresh2 Hot Fix 4 has been released on July 15, 2022, for CATIA Magic and No Magic portfolios. It introduces a number of bug fixes and performance improvements.

**2021x Refresh2 Hot Fix 2 available**
Due to the Apache Log4j vulnerability issues, the 2021x Refresh2 HF2 has been released on March 4, 2022. The HF2 addresses Log4j 1.x and 2.x versions.

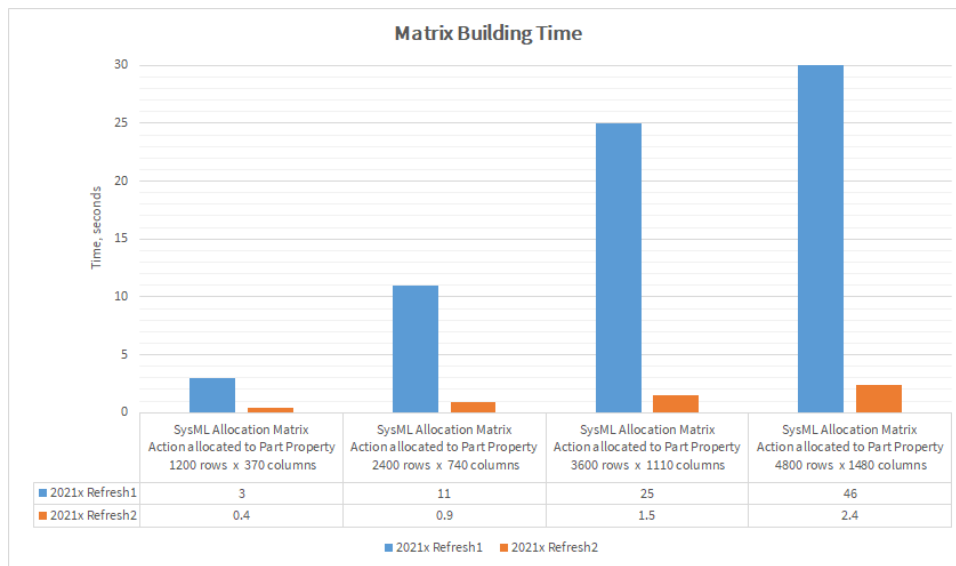
**2021x Refresh2 Hot Fix 1 available**
Due to the Apache Log4j vulnerability issues, the 2021x Refresh2 HF1 has been released on December 22, 2021. The HF1 addresses Log4j 2.x versions.
Also, see the Knowledge Base article at <https://kb.dsxcient.3ds.com/mashup-ui/page/resultqai?id=QA00000102301e>

**Hot Fix version compatibility**
The version and Hot Fix number of a modeling tool and its plugins must be the same. After installing the Hot Fix version of a modeling tool, select the same Hot Fix version when downloading its plugins. The modeling tool will not work correctly if you install plugins of a different version and/or Hot Fix number.
Also, see the Knowledge Base article at <https://kb.dsxcient.3ds.com/mashup-ui/page/resultqai?id=QA00000102301e>.

Client-side Performance Improvements <ul style="list-style-type: none">• Dependency Matrix• Find• Element selection	Integrations <ul style="list-style-type: none">• Structured Expressions Improvements	Collaboration <ul style="list-style-type: none">• Cloning Used Projects
Teamwork Cloud-related Performance Improvements <ul style="list-style-type: none">• Performance Improvements Under Slow Network	Modeling and Infrastructure <ul style="list-style-type: none">• Structured Expressions Improvements Discontinued Products Other Improvements	Other Teamwork Cloud-related Improvements Report Wizard

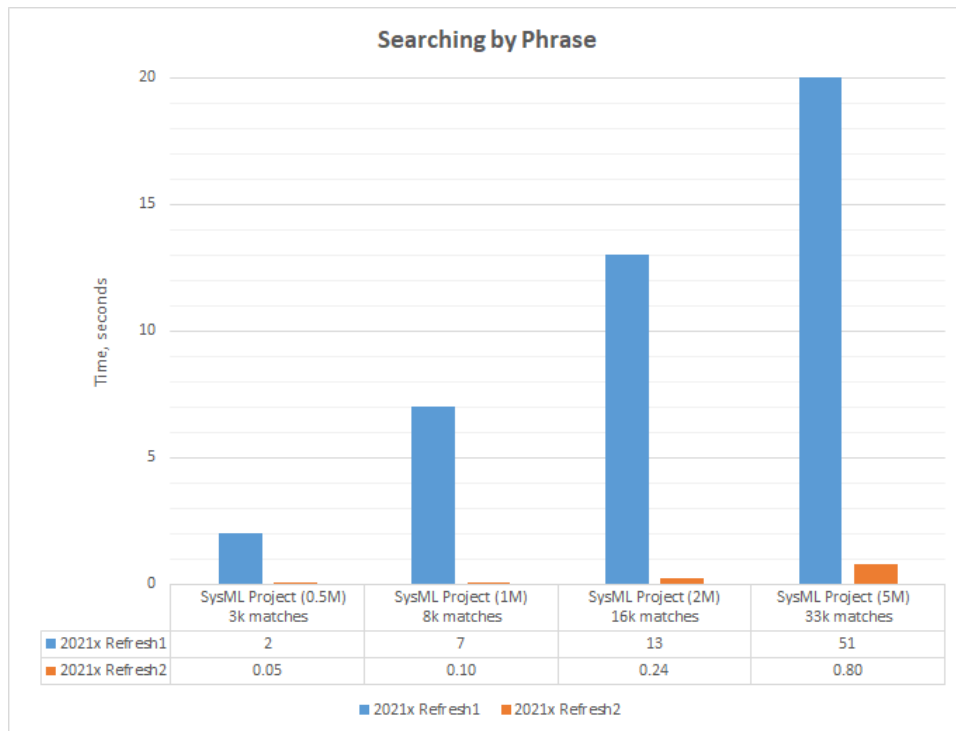
Client-side Performance Improvements

- **Dependency Matrices.** Experience enhanced in matrix building performance. From now on, large matrices are built up to 20 times faster compared to 2021x Refresh1.



A chart comparing the SysML Allocation Matrix building time in 2021x Refresh1 and 2021x Refresh2 projects.

- **Find.** Now you can perform a search by phrase in the model 40-70 times faster compared to 2021x Refresh1. This is applicable to **Find** and **Find and Replace** dialogs as well as the Find operation used in Structured Expressions (e.g., Derived Properties, Smart Packages, Tables, Matrices, etc.)



A chart comparing the search by phrase time in 2021x Refresh1 and 2021x Refresh2 projects.

- **Element selection dialog.** Further performance improvements have been introduced to element selection (i.e., the **Select Element** dialog and drop-down lists). The element search can now be performed instantly when using **Filter By Package Imports** for context-specific type selection.

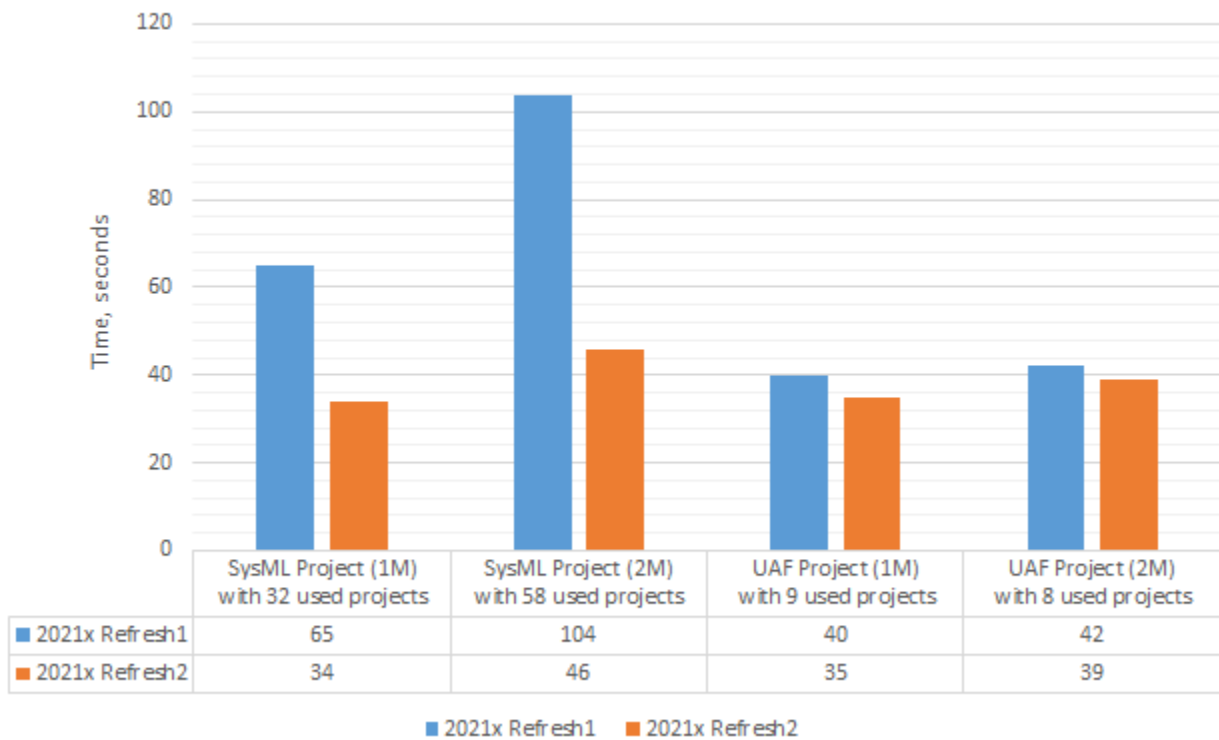
[Back to top](#)

Teamwork Cloud-related Performance Improvements

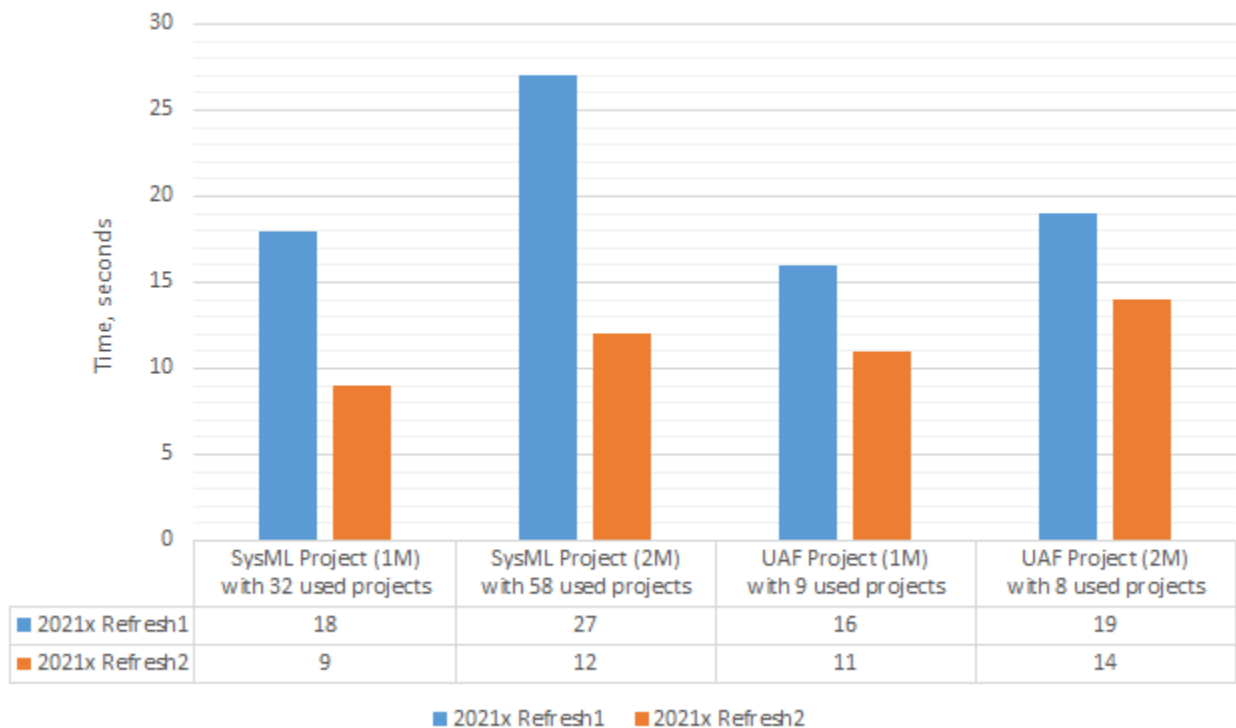
Performance Improvements Under Slow Network

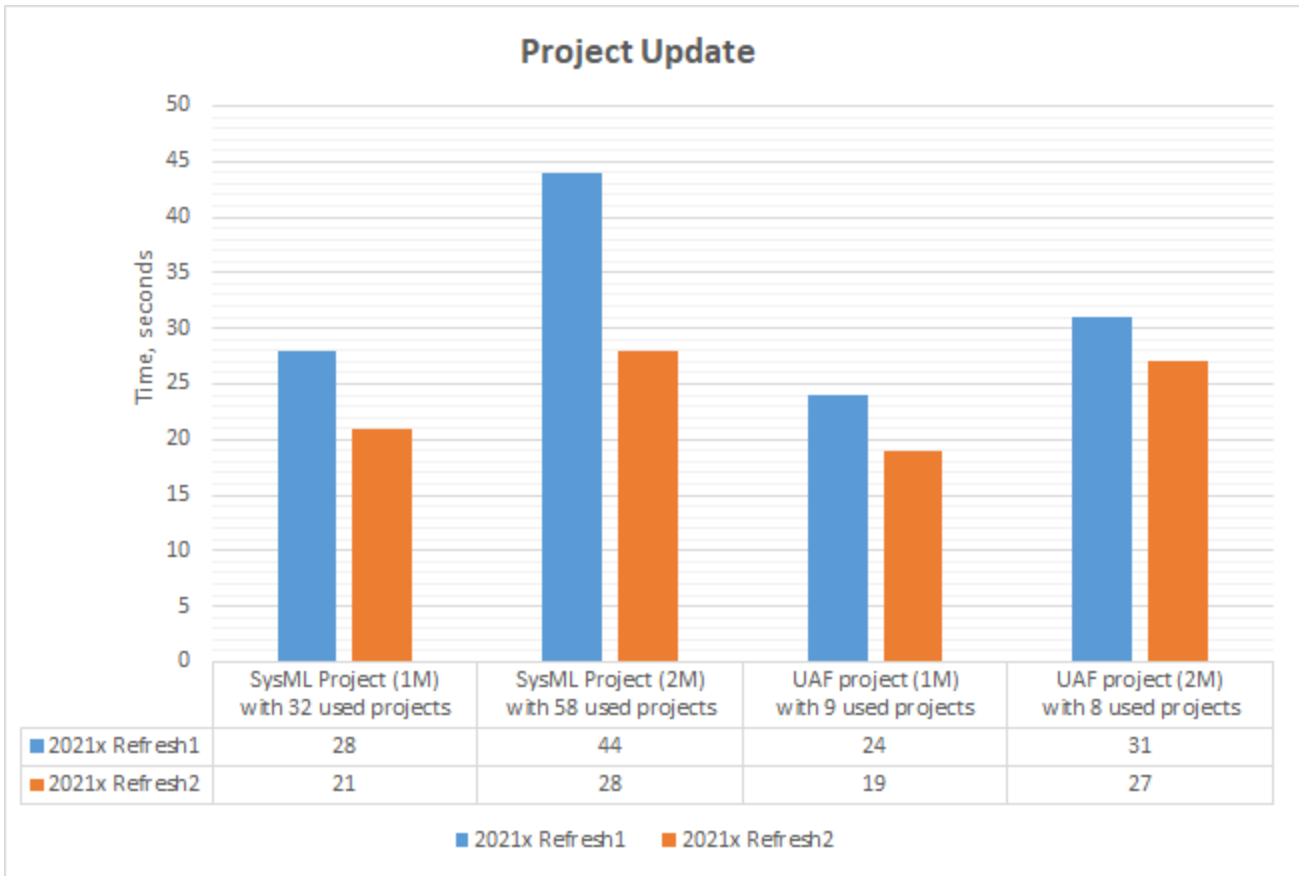
Performance improvements have been implemented to optimize working with Teamwork Cloud projects containing a set of used projects in slow network environments (ping time >115 ms).

Project Load



Project Commit





A chart comparing the Project Load, Project Commit, and Project Update operations speed in slow network environments.

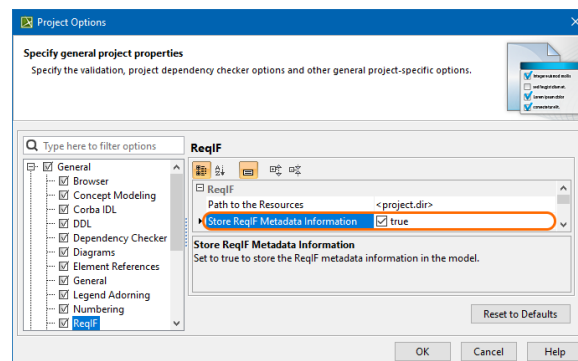
[Back to top](#)

Integrations



ReqIF Import/Export Improvements

Further enhancements have been implemented for the ReqIF import/export plugin. A new project option **Store ReqIF Metadata Information** has been introduced to ensure ReqIF standard-compliant round-trip of data between the modeling tool and any other ReqIF standard-compliant tool. Once enabled, element IDs found in ReqIF files are retained when such files are imported into the modeling tool. As a result, elements updated in the modeling tool and exported back to external ReqIF-compliant tools are no longer treated as new.



The project option to store the ReqIF metadata in the model.

[Back to top](#)

Modeling and Infrastructure

Structured Expressions Improvements

Long-awaited improvements have landed! Working with Structured Expressions is now more convenient and less confusing.

- The Comparison operations, such as Equals, GreaterThan, and LessThan, can consume a set containing a single element, for instance, as returned by Metachain Navigation and Simple Navigation operations
- In cases you cannot find the needed property for the Property Test operation, you can now show the full list of properties instead of limiting it to properties applicable to the contextual element type only.
- Now all template operations (Simple Navigation, Metachain Navigation, Find, and Implied Relation) are represented in italic to clearly indicate that they are not specified. As a result, constant double-checks and manual removals of empty operations are no longer needed.
- You can now apply changes to the Parameter name without the fear of breaking its usages within the Structured Expression specified in the Opaque Behavior body.

Stay tuned, more enhancements are coming in future versions!

[Learn more about Structured Expressions>>](#)

Other Improvements

- From now on, suspect links in used projects are ignored when performing the suspect links analysis, meaning that the scope of the analysis is narrowed down to only relevant elements.
- The **Notification Window** is no longer opened automatically when opening projects and switching between or creating new projects since the **Notification Window** status (open/closed) is now respected for each project individually.

[Back to top](#)

Discontinued Products

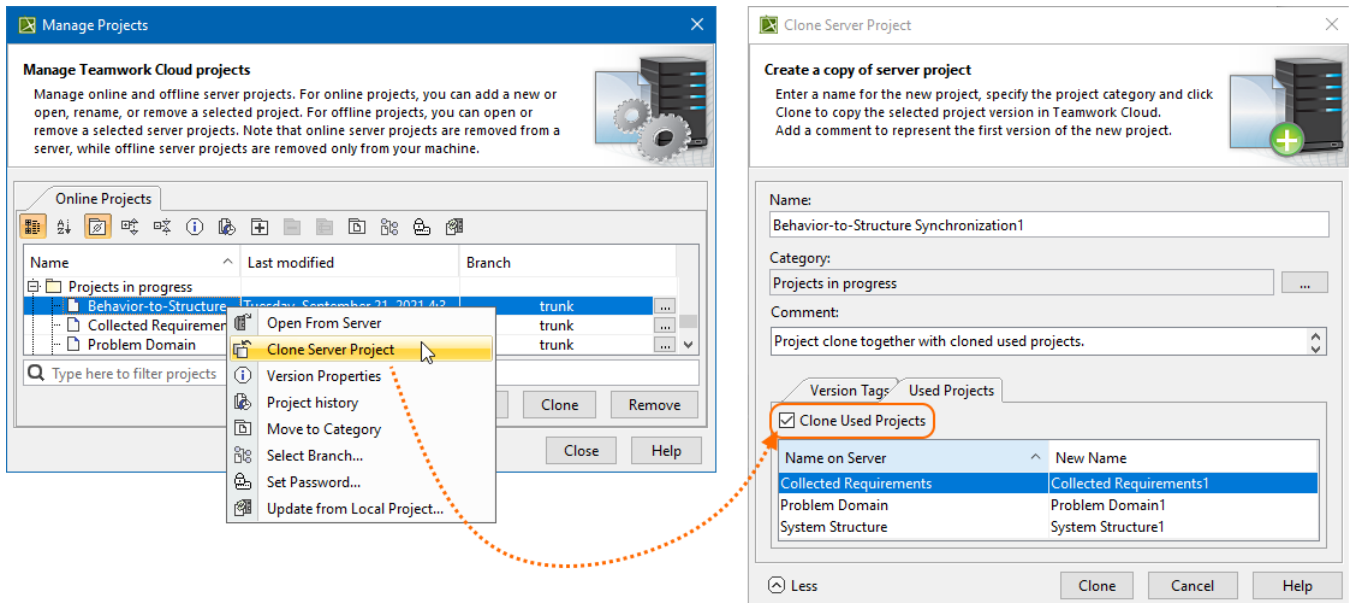
Beginning with the next major version, the support of the following products will be discontinued:

- **CSV Import Plugin.** [Excel/CSV Sync](#) or [Excel/CSV Import](#) features will be replacing the CSV Import Plugin.
- **MagicDraw Professional Java Edition Floating License** and **MagicDraw Professional Java Edition Seat License.** Java Code Engineering will be available in the modeling tool Enterprise editions. For customers with active software assurance (ALC), the upgrade to the Enterprise edition will come at no cost.

Collaboration

Cloning Used Projects

Project cloning has been upgraded! For more effective working with Teamwork Cloud projects, you can now clone used projects together with the main project automatically by simply selecting a checkbox.



Cloning used projects together with the main project.

Other Teamwork Cloud-related Improvements

- For security reasons, you can now add an argument to the properties file of the modeling tool to hide logging in to Teamwork Cloud with the username/password.

- From now on, you can access the properties of the selected version much quicker since the **Version Properties** button has been added to the toolbar and the shortcut menu of the Content History and element History panels.
- The Package permissions dialogs have been improved for usability purposes.

[Back to top](#)

Report Wizard

- In this version, Report Wizard comes with an additional capability of getting derived property value by using **\$report.getStereotypeProperty()** and **\$report.getStereotypePropertyString()**.
- With **\$report.isTypeOf(element, stereotypeName)** for checking a super type of the specific element, you are now able to check whether an element is a subtype of the specified stereotype. [Get familiarized with this report tool >>](#)
- The new **Includes other files** option in the **Export** dialog allows you to include related files of an exported template into the same MRZIP file. [Learn more about the Template Management pane >>](#)
- You can now customize page orientation and margin in double or String values with **\$pageprop.setPortrait(\$top, \$bottom, \$left, \$right)** and **\$pageprop.setLandscape(\$top, \$bottom, \$left, \$right)** functions. You can also set page orientation to portrait or landscape with **\$pageprop.setPortrait()** and **\$pageprop.setLandscape()** functions for generated reports. [Learn how to customize the margin and set page orientation >>](#)
- The current Velocity Template Language has been upgraded from Version 1.6.2 to 2.2. [Find out more about the velocity templating language >>](#)

[Back to top](#)

Version news of servers and plugins

- [Teamwork Cloud 2021x Refresh2](#)
- [SysML Plugin 2021x Refresh2](#)
- [Cameo Simulation Toolkit 2021x Refresh2](#)
- [UAF Plugin 2021x Refresh2](#)
- [Cameo DataHub 2021x Refresh2](#)

MagicDraw Documentation

- [MagicDraw 2021x Refresh2](#)

News of earlier versions

- [MagicDraw 2021x](#)
- [MagicDraw 19.0 LTR SP4](#)
- [Product News Archive](#)