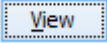


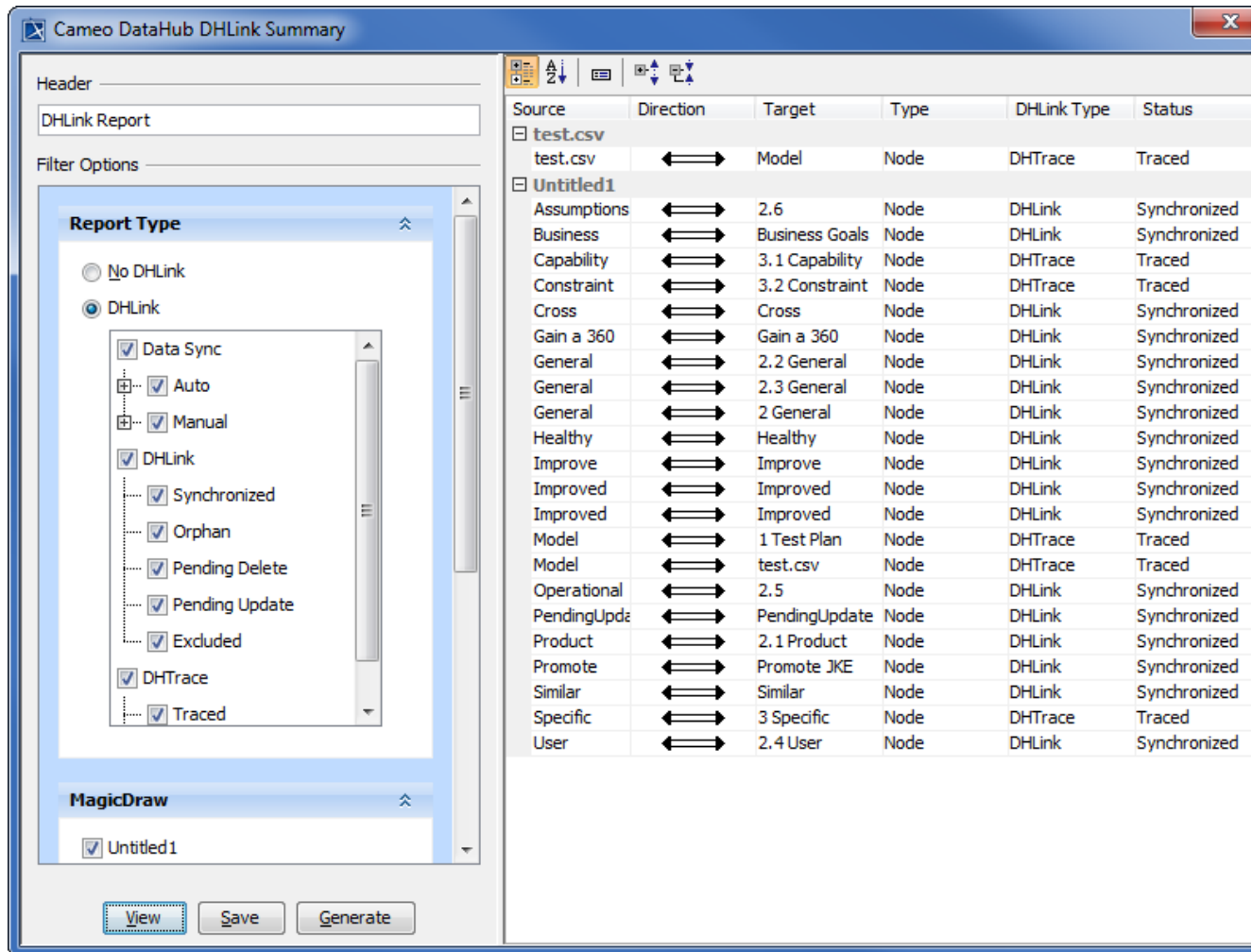
DHLink Summary

If you have many DHLinks to review, you can select **DHLink Summary** from the DataHub menu to open the Cameo DataHub **DHLink Summary** dialog and view all types of links. In the **DHLink Summary** dialog, you can filter the relations that you want to view and adjust the display. You can also remove or update a relation, or clear the status.

There are two filter options: **No DHLink** and **DHLink**. The **No DHLink** option filters all elements that have no DHLink element in the DataHub, and the **DHLink** option filters all elements that contain DHLink synchronization.

To open the **DHLink Summary** dialog

1. On the MagicDraw main menu, click **Tools > DataHub > DHLink Summary**.
2. The **DHLink Summary** dialog opens. The **Filter Options** pane on the left-hand side allows you to choose what type of relations you want to see. You can select one of the following:
 - **No DHLink** to display independent standalone elements and nodes without any DHLink.
 - **DHLink** to display the relation between elements. The state of the DHLink could be **Synchronized**, **Orphan**, **Pending Delete**, **Pending Update**, or **Excluded**.
 - **DHTrace** to display the state of a DHTrace. If the DHTrace is changed on either side, it becomes **Suspect**. If there is no change, its state remains as **Traced**.
3. Select any check boxes that represents the driver and Data Source to open them in the DHLink summary.
4. Click . The DHLink summary displays on the right-hand side of the dialog.



The table below provides the description of each column in the **DHLink Summary** dialog.

Column	Description
--------	-------------

Source	<p>The name of the element or node in a selected driver that has a DHLink.</p> <p>The sources are ordered according to their Data Sources.</p>
Direction	The direction of synchronization between two elements.
Target	The name of the element that has a DHLink with another element in the Source column.
Type	The type of the element. This is usually a node or a link.
DHLink Type	The type of DHLink between the Source and Target .
Status	The status of the DHLink that can be Synchronized , Pending Update , Pending Delete , Excluded , or Orphan .
DHTrace	To include a summary of the DHTrace links - Suspect or traced .