

Deleting and executing Macros

On this page:

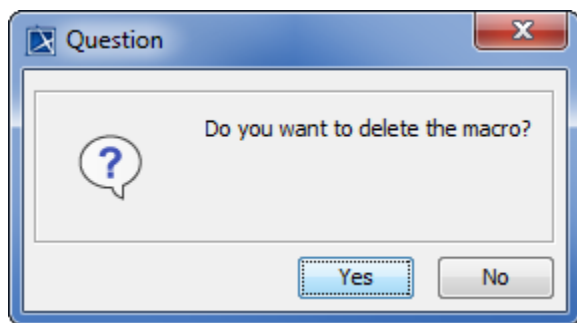
- [Deleting a Macro](#)
- [Executing a Macro](#)
- [Organizing Macros Dialog Mnemonic Keys](#)

You can click the  or  button in the **Organize Macros** dialog to delete or execute a selected macro. You can also press the pre-designed mnemonic keys to delete or run a macro as described in [Organizing Macros Dialog Mnemonic Keys](#) below.

Deleting a Macro

To delete a macro from the **Organize Macros** dialog

1. Click **Tools > Macros > Organize Macros** to open the **Organize Macros** dialog.
2. Select a macro from the table and either click **Delete** or press **Alt + D**. A dialog will open, asking whether you want to delete the macro, see figure below.

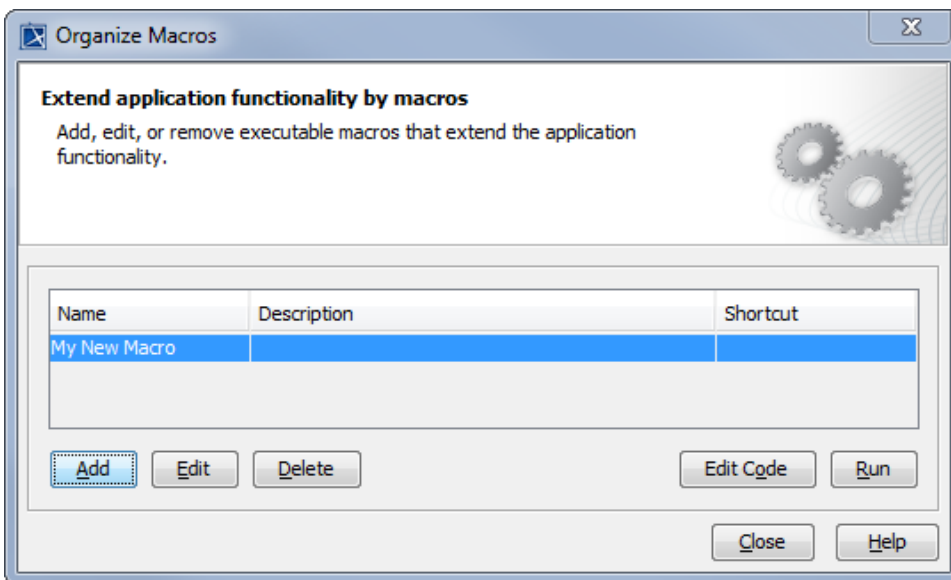


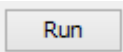
3. Click **Yes** and the macro will be deleted from the **Organize Macros** dialog.

Executing a Macro

To execute a macro from the **Organize Macros** dialog

1. Click **Tools > Macros > Organize Macros** The **Organize Macros** dialog will open, see figure below.

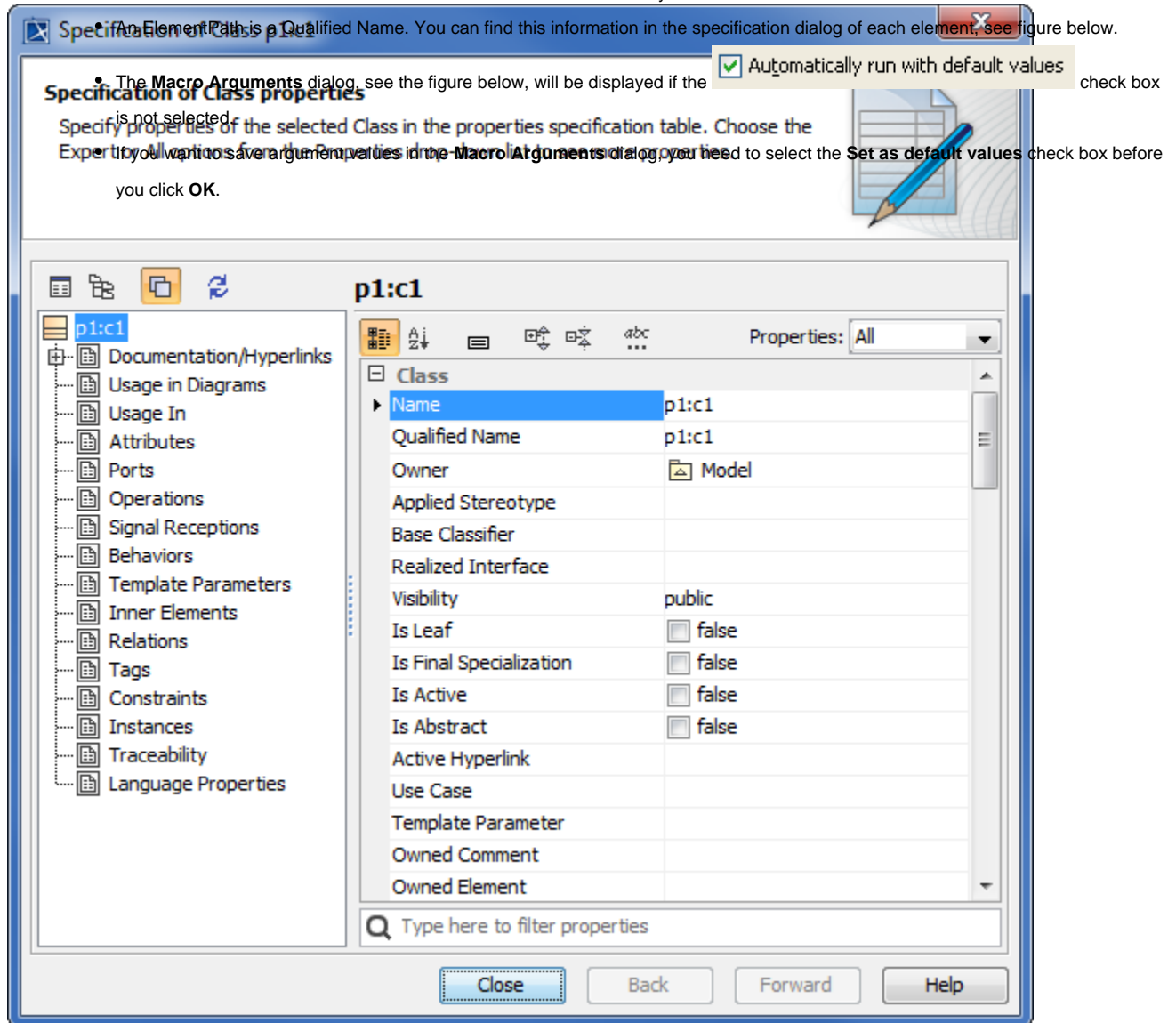


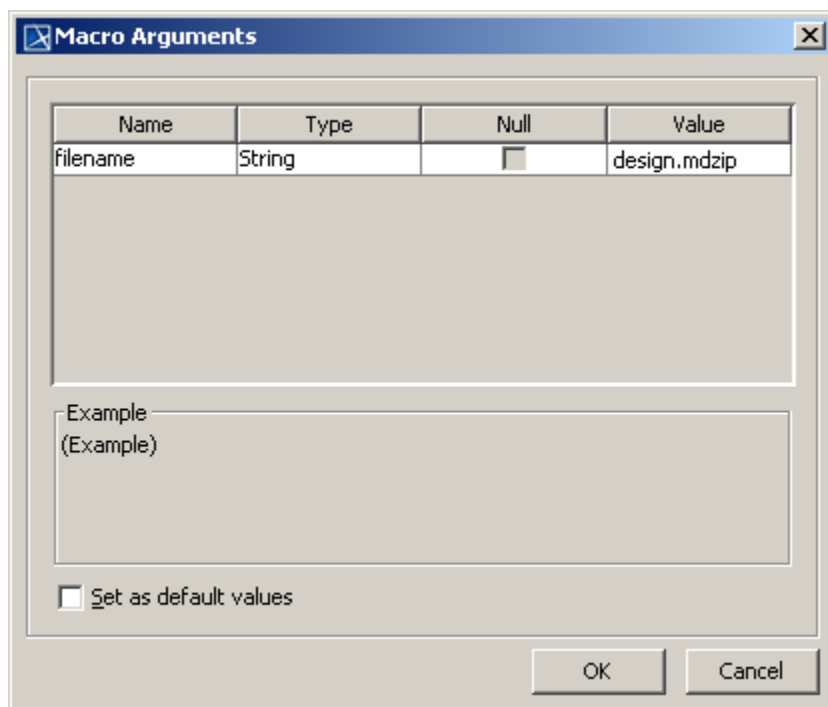
2. Select a macro from the table and click . After the macro has been executed, a message will open: **The macro <macro name> has been executed.**

3. If you have the parameters in the **Macro Information** dialog, you need to specify the value in the **Macro Arguments** dialog, see figure below, before running the macro.



- For an array datatype, you need to click the button in the **Value** column in the **Macro Arguments** dialog and enter each value into each line. The value of the first line will be the value in array index 0.





- You can also execute a macro from the main browser in MagicDraw by pressing the shortcut keys that you have defined in the **Organize**

Macros dialog.

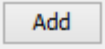
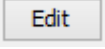

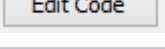
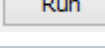
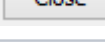
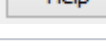
- You can only run macro one at a time.

Organizing Macros Dialog Mnemonic Keys

If there is an error while running a macro, for example, syntax error, the following message will open: **MagicDraw cannot execute the <macro language> macro, please make sure that <path, filename, extension> is correct in the Macro description.** The table below shows the **Organize Macros** dialog mnemonic keys and their function.

- If MagicDraw cannot find a macro file in the location that you have specified in the **Open** dialog, the following message will open: **MagicDraw cannot find the macro: <path, filename, extension>.**

Table listing of Organize Macros Dialog Mnemonic Keys

Mnemonic keys	Button	Function
Alt + A		To add a macro in the Macro Information dialog.
Alt + E		To edit a macro in the Macro Information dialog.
Alt + D		To delete a macro from the Organize Macros dialog.
Alt + O		Code To edit source code in Macro Editor .
Alt + R		To run a macro from the Organize Macros dialog.
Alt + C		To click the Close button.
Alt + H		To click the Help button.



