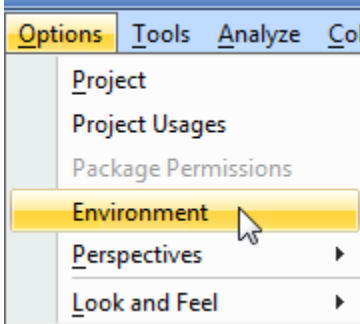


Selecting a default macro language

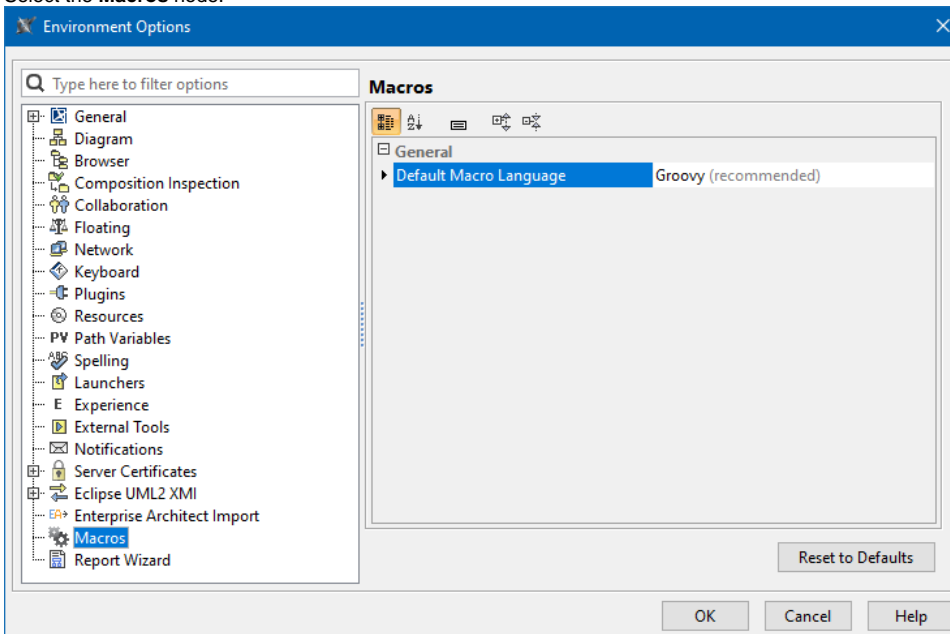
Use the **Environment Options** dialog to select a default macro language.

To select a default macro language

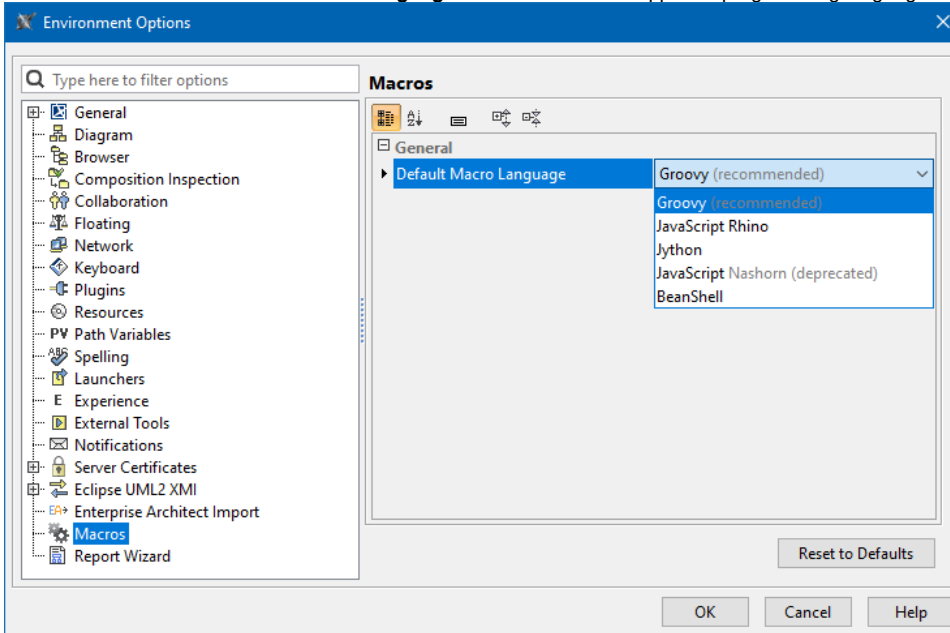
1. Click **Options > Environment** on the main menu. The **Environment Options** dialog opens.



2. Select the **Macros** node.



3. Click the box next to the **Default Macro Language** box to see a list of supported programming languages.



4. Select the preferred language.
5. Click **OK** to save the selected language as the default macro language.



- Groovy is the default macro language. To ensure the best performance experience, it is strongly suggested that you use the recommended language.
- Macro Engine currently supports BeanShell, Groovy, JavaScript (Nashorn and Rhino), and Jython only.