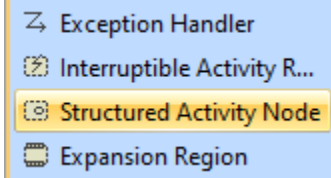


Structured Activity Node

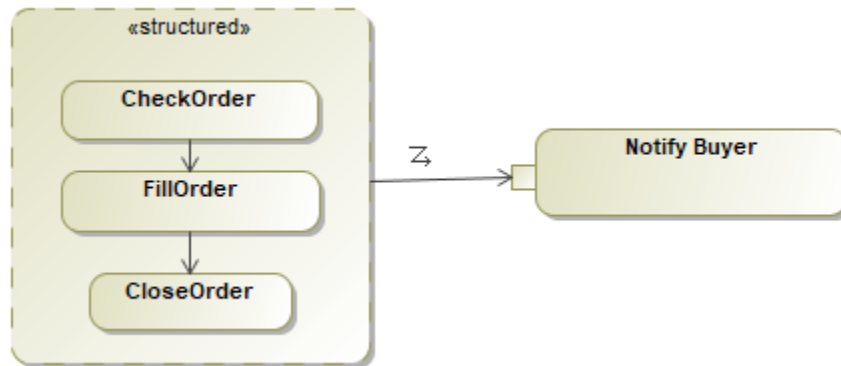
A Structured Activity Node is an executable activity node that may have an expansion into subordinate nodes as an activity group. The subordinate nodes must belong to only one Structured Activity Node, although they may be nested.

To create a Structured Activity Node

1. Expand the Activity diagram palette and click the **Structured Activity Node** icon.



2. Click on the Activity diagram pane. The Structured Activity Node is created.
3. (Optional) To specify the Structured Activity Node, right-click the symbol and open its [Specification window](#).



A variable is defined in the scope of the Structured Activity Node. It has no value and may not be accessed outside the node.