

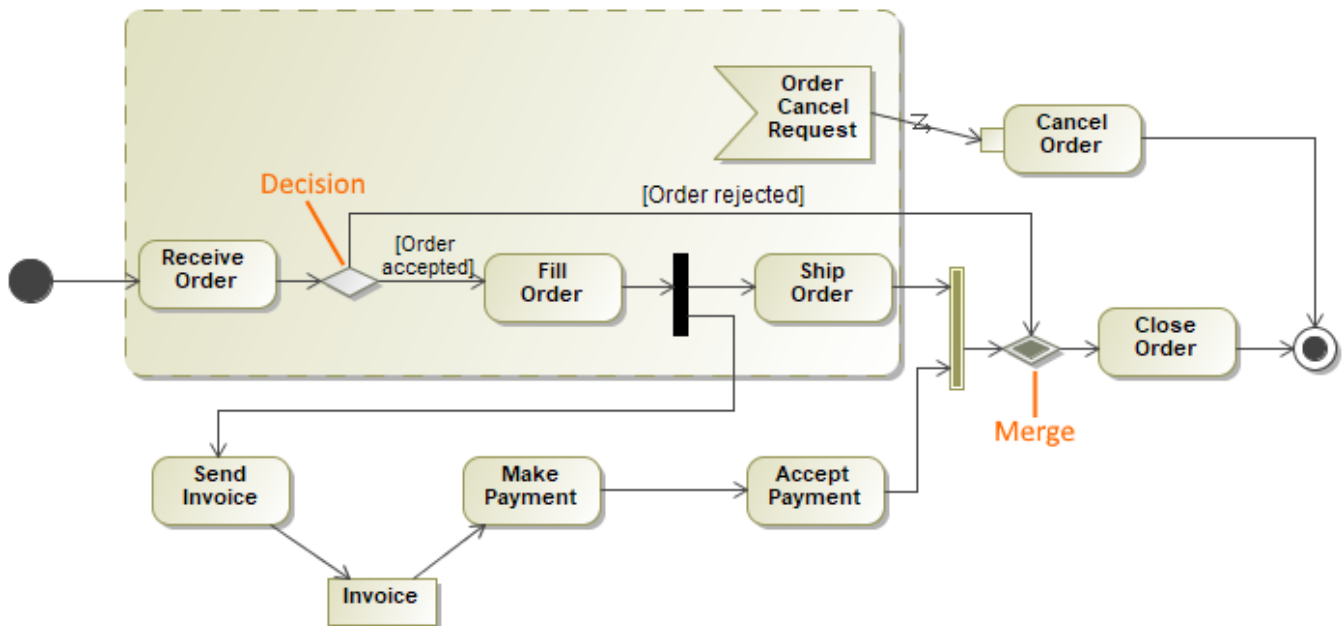
Decision and Merge

A Decision Node in an [Activity diagram](#) is used much like a choice or [junction](#) point in the [State diagrams](#). Decision nodes allow you to separate the Activity Edges. Merge nodes allow you to combine the Activity Edges together.

Decision Nodes are created using guard conditions. They help protect Activity Edges that depend on guard conditions.

1. The symbol used for the Decision Node is a large diamond shape. It can have one or two incoming Activity Edges, and at least one outgoing Activity Edge
2. The symbol used for the Merge Node is a large diamond shape. It can have exactly one outgoing Activity Edge but may have multiple incoming Activity Edges.

The Decision and Merge are represented by the same symbol. Although, you can set the **Use different Fork/Join and Decision/Merge notations** [project option](#) to draw different notations for the **Decision** and **Merge**.



Activity diagram illustrates that when an order cancellation request is made (only while filling, receiving or shipping orders) - the Cancel Order behavior is invoked.

Related pages

- [Activity diagram](#)
- [Interaction Overview diagram](#)
- [Activity diagram](#)
- [Junction](#)
- [Model Elements](#)