

Comment

A **Comment** is a UML element used to specify various remarks of an element in the model. In the diagram palette, under **Common**, the Comment command appears under the Note command. You can display text in the Comment as plain or HTML text.



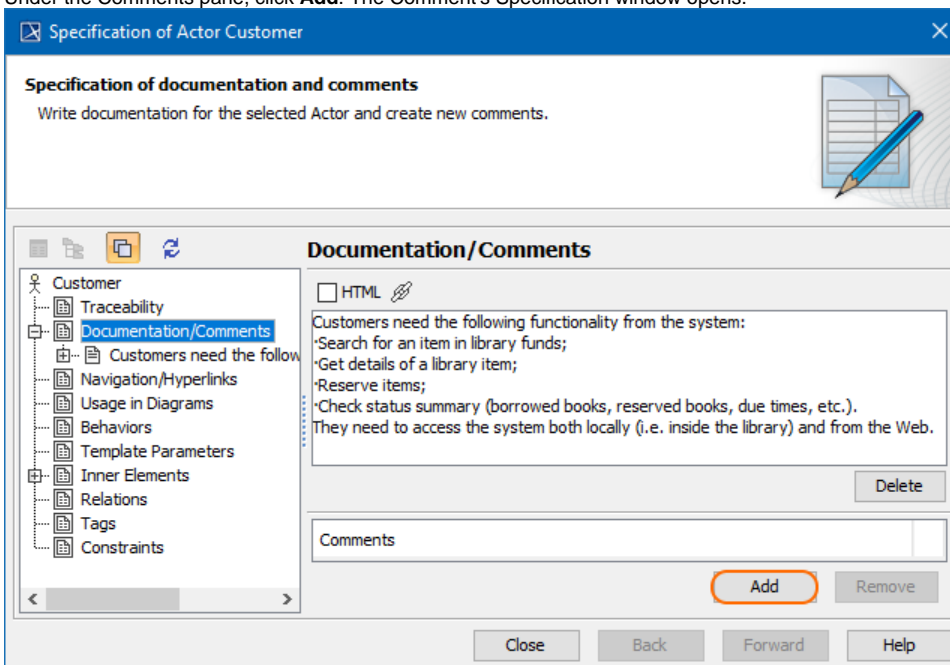
Example of a comment.

You can format the Comment's symbol properties in the [Symbol Properties dialog](#).

You can specify a Comment in the Comment's [Specification window](#), which also displays the description of each Comment property in the description area of the Specification window.

To create a comment in the element Specification window

1. Open the Specification window of the selected element.
2. In the panel on the left, select the **Documentation/Comments** property group.
3. Under the Comments pane, click **Add**. The Comment's Specification window opens.



4. Type the Comment content as the **Body** property value and click **OK**.
5. Close the Specification window.

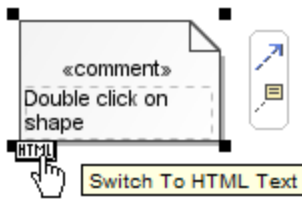


To view the **Documentation/Comments** symbol on the diagram pane, expand the **Documentation/Comments** property group and drag the selected documentation/comment on the diagram pane.

To switch a comment to HTML or Plain Text

Do one of the following:

- On the diagram pane, select the Comment symbol. Click the button that appears on the lower-left corner of the shape:
 - The **HTML** button - to switch the text to the HTML text.
 - The **Plain** button - to switch the text to the Plain text.



HTML text

You can edit the HTML text in the comment using the [HTML editor](#).

To display an anchored element documentation in a comment

1. [Anchor](#) a Comment to a symbol on the diagram pane.
2. Select the Comment, on the diagram pane. Open its shortcut menu.
3. Select the **Retrieve Documentation** command.
The anchored symbol's documentation is displayed on the Comment's symbol.



Retrieve Documentation

You can enable the **Retrieve Documentation** option **only** if you already have documentation in the Comment's Specification window. Read the first set of instructions on this page to see how to create the comment in the element's Specification window.



Edit

You can edit element documentation directly on the Comment symbol.