

Custom traceability rules

On this page

- [Creating a custom traceability rule](#)
- [Specifying a custom traceability rule](#)
- [Editing a custom traceability rule](#)
- [Editing a custom traceability rule in a table](#)
- [Displaying a custom traceability rule](#)
- [Removing a custom traceability rule](#)

You can create custom traceability rules if predefined traceability rules are not sufficient to trace and analyze relationships between elements in your model. In a model, custom traceability rules are considered as [Derived Properties](#), because their values are produced or calculated from other properties. Usually, the values of custom traceability rules cannot be changed directly, but you can [edit](#) and [display](#) these rules the same way as any other property.

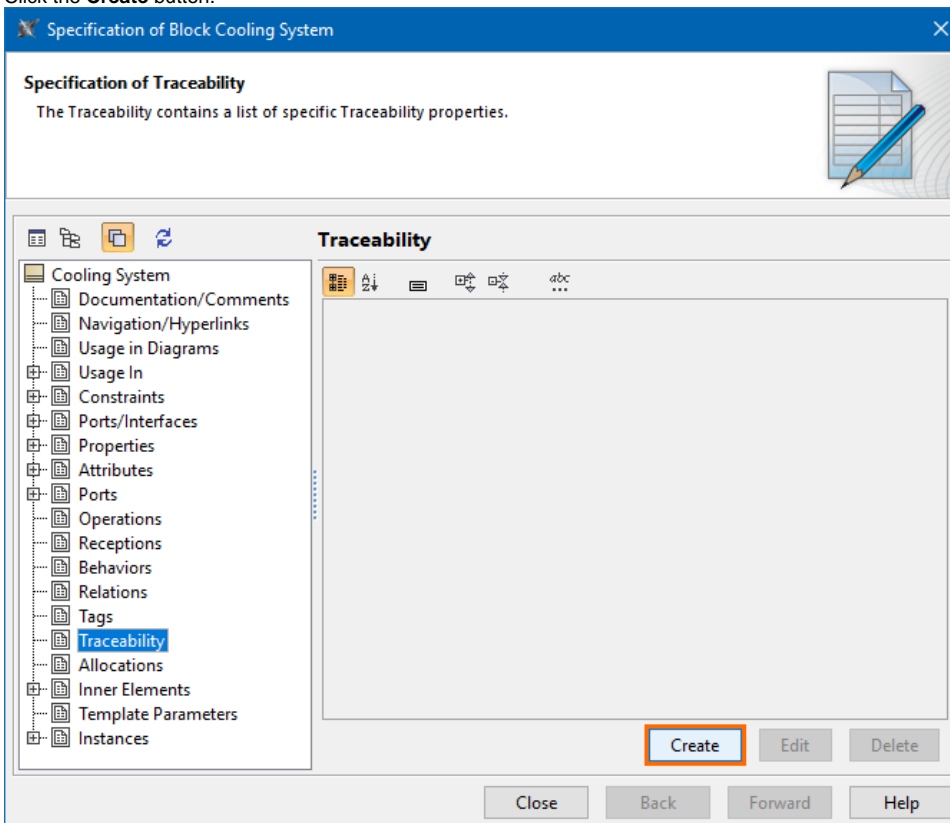
Creating a custom traceability rule

Custom traceability rules can be quickly created from the Specification window of a particular element. This way you create a new Derived Property for all elements of the selected element type.

The customization of the newly created traceability rule is saved in the *Derived Properties* Package with the «derivedPropertiesSuite» stereotype. This folder is normally hidden in the containment tree of your model. You can find it using the [Quick Find functionality](#). This may be useful when you want to change traceability rule properties.

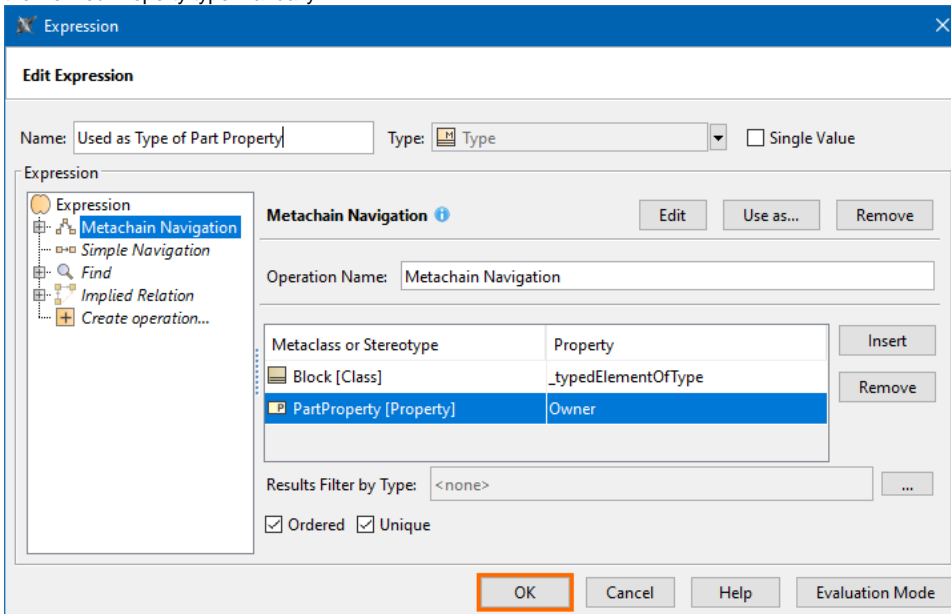
To create a custom traceability rule

1. In the model browser or a diagram, double-click the element for which you want to create a custom traceability rule to open its Specification window.
2. In the property group list on the left side of the Specification window, select the **Traceability** group.
3. Click the **Create** button.



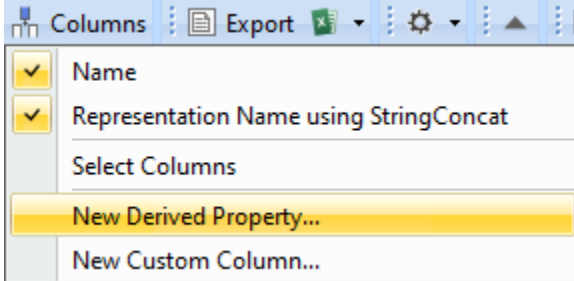
4. In the open **Expression** dialog, specify the name and [expression](#) of a new traceability rule.

- Click **OK** and close the Specification window. If you want to create a Derived Property with a result other than an element, you need to change the Derived Property type manually.



To create a custom traceability rule in a table

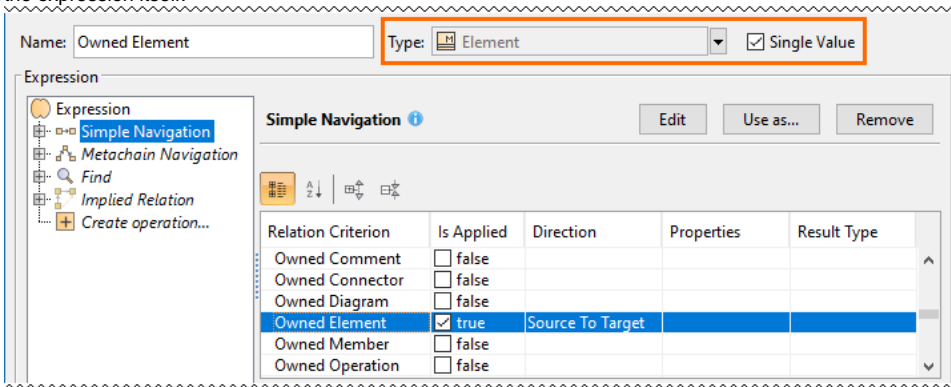
- In the toolbar of an active table, click the **Columns** button, and in the menu select the **New Derived Property** command.



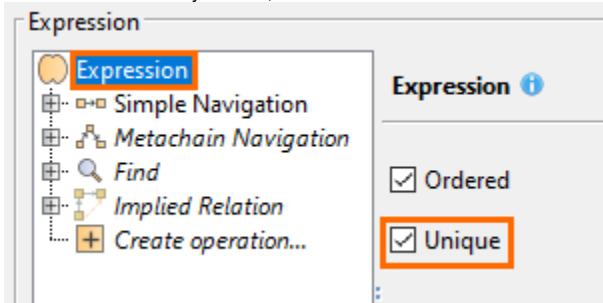
Specifying a custom traceability rule

When you create a new custom traceability rule for an element or a Derived Property in a table, you need to define the expression in the **Expression** dialog. Keep in mind:

- The Derived Property **type** and **multiplicity** (conveyed via the **Single Value** check box) are set automatically according to the specified expression once it is created or edited. You can also change them manually, however, they will only be applied if you make no modifications in the expression itself.



- The root union of a Derived Property structured expression has the **Unique** check box which you can select to have only one identical element count as the result. By default, the check box is selected.



Additional information

Learn more about specifying expressions, see the [Specifying criteria for querying model](#) page.

Editing a custom traceability rule

You can modify a custom traceability rule from the Specification window of a particular element.

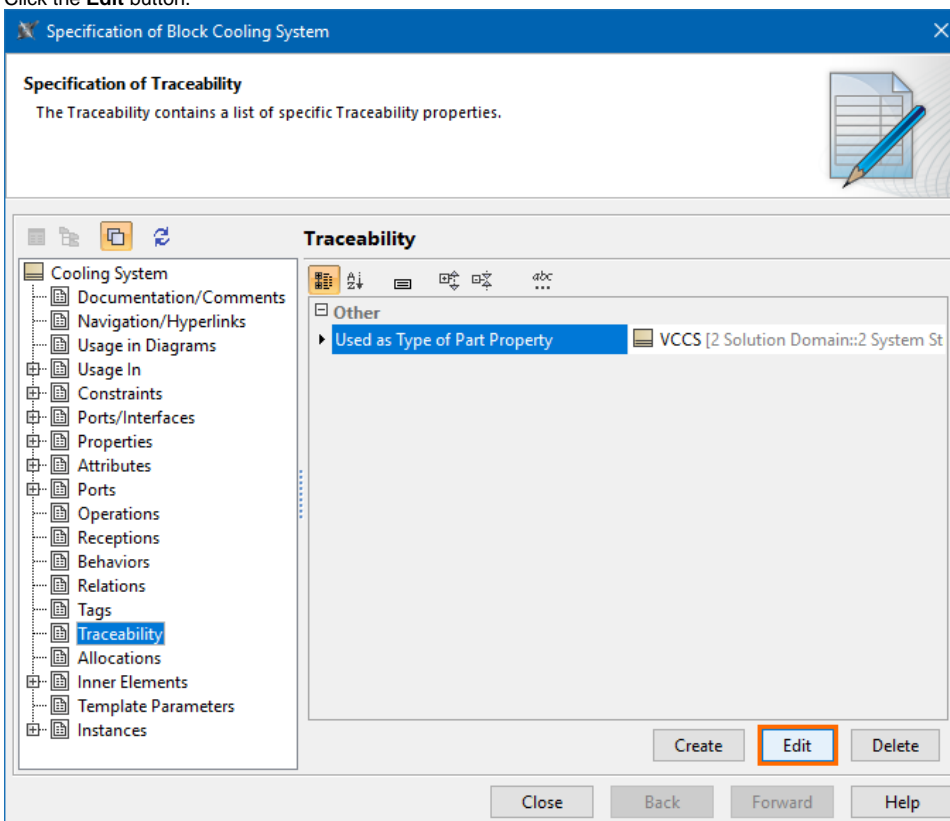


Editing traceability rule values

You can edit the value of a custom traceability rule directly only when its operation type is [Simple Navigation](#) and you specified only one criterion.

To edit a custom traceability rule

- In the model browser or a diagram, double-click the element with the traceability rule you want to edit to open its Specification window.
- In the property group list on the left side of the Specification window, select the **Traceability** group.
- In the property specification area on the right side of the window, select the traceability rule you want to edit.
- Click the **Edit** button.



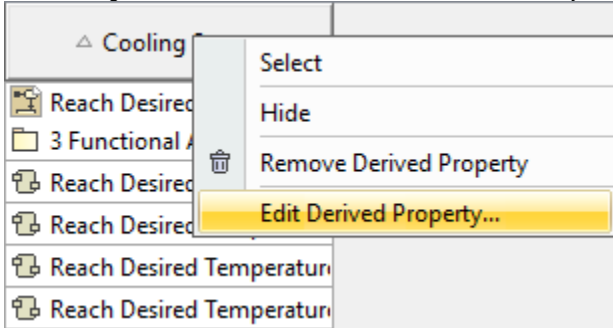
- In the **Expression** dialog, make desired changes and click **OK**.
- Close the Specification window.

Editing a custom traceability rule in a table

If a custom traceability rule is displayed in a table, you can edit it directly from that table.

To edit a custom traceability rule in a table

1. In a table, right-click the header of the desired custom traceability rule column and select **Edit Derived Property**.

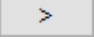
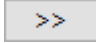


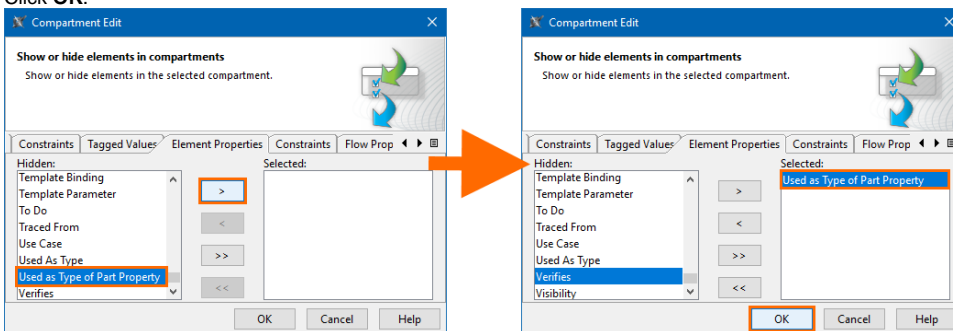
2. In the **Expression** dialog, make desired changes and click **OK**.

Displaying a custom traceability rule

If you want to visualize custom traceability rules, you can display them in the compartments of element shapes or in tables.

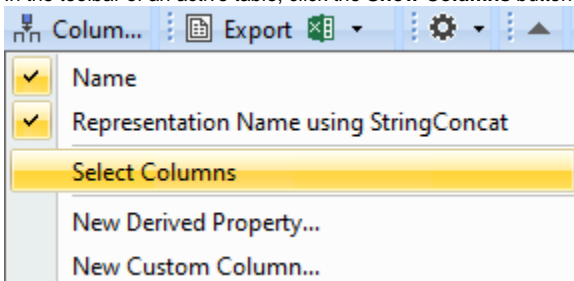
To display a custom traceability rule on an element shape

1. Do one of the following:
 - In a diagram, right-click the desired element shape and select **Edit Compartments**.
 - In a diagram, select the desired element shape and click the **Compartments** smart manipulator, click on the down arrow to expand the menu, and select **Edit Compartments**.
2. In the **Compartment Edit** dialog, select the **Element Properties** tab.
3. In the **Hidden** list on the left side of the dialog, select the traceability rules you want to display.
4. Click  to add the selected traceability rules to the **Selected** list on the right side of the dialog. If you want to display all properties from the **Hidden** list, click .
5. Click **OK**.



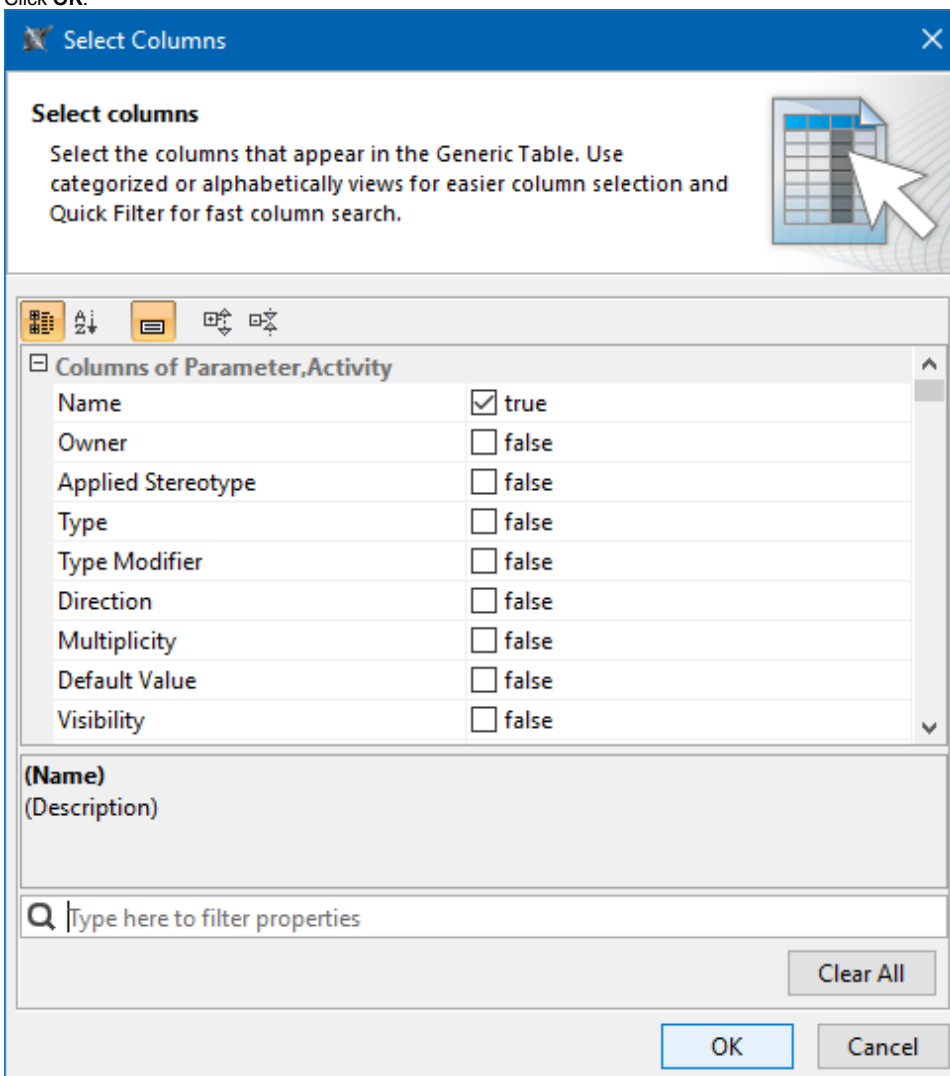
To display a custom traceability rule in a table

1. In the toolbar of an active table, click the **Show Columns** button and from the menu select the **Select Columns** command.



2. In the **Select Columns** dialog, set the traceability rules you want to display as *true*.

3. Click **OK**.



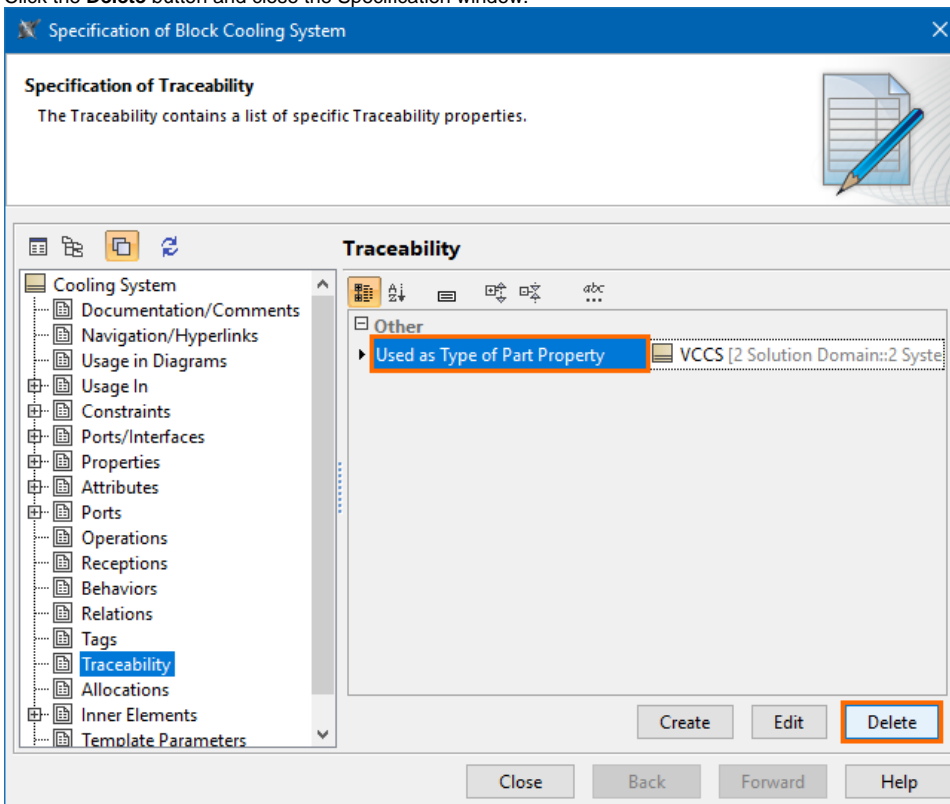
Removing a custom traceability rule

You can remove a Custom traceability rule from the Specification window of a particular element or directly from a table if the traceability rule is displayed in it.

To remove a custom traceability rule

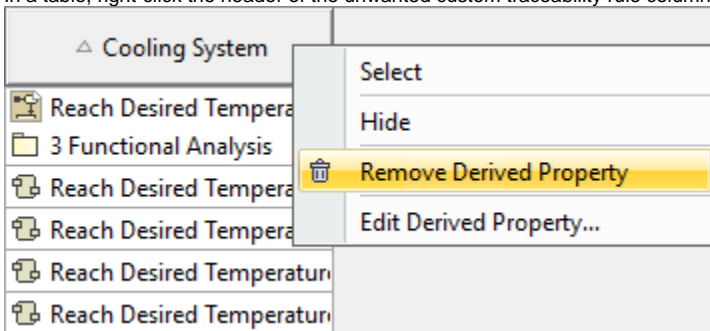
1. In the model browser or a diagram, double-click the element with the traceability rule you want to remove to open its Specification window.
2. In the property group list on the left side of the Specification window, select the **Traceability** group.
3. In the property specification area on the right side of the window, select the traceability rule you want to remove.

- Click the **Delete** button and close the Specification window.



To remove a custom traceability rule in a table

- In a table, right-click the header of the unwanted custom traceability rule column and select **Remove Derived Property**.



Related pages

- [Traceability](#)
 - [Creating traceability relations](#)
 - [Traceability relations representation](#)
 - [Navigating between different levels of abstraction](#)
 - [Analyzing traceability relations](#)
 - [Predefined traceability rules](#)