

# Working with Activity diagram

## On this page


- [Behavior Creation Mode](#)
- [Creating Actions by pasting the copied list](#)
- [Smart layout](#)
  - [Dynamic centerlines](#)
  - [Diagram orientation](#)
- [Deleting from Activity diagrams](#)
- [Displaying inner elements](#)

## Behavior Creation Mode

You can use the **Behavior Creation Mode** to automatically create an Activity after creating a [Call Behavior Action](#) in the [Activity Diagram](#). The newly created Activity will be set as the behavior of the Call Behavior Action.

To turn on the **Behavior Creation Mode** in an Activity diagram

- In the [diagram palette](#), click .

 The Behavior Creation Mode works separately for each project.

When the **Behavior Creation Mode** is on:

- A [Behavior](#) is created together with the [Call Behavior Action](#). It inherits the type of the Call Behavior Action owner.
- If a [Call Behavior Action](#) and its [Behavior](#) are not titled, type a name on the Call Behavior Action shape on the diagram, and the typed name will be set as the Behavior's name automatically.

## Creating Actions by pasting the copied list

You can copy the item list from the text editor (Word, Notepad, etc.), web page, PDF file, PowerPoint slide and paste it in the Activity diagram to create actions.

To create Actions by pasting items from the list

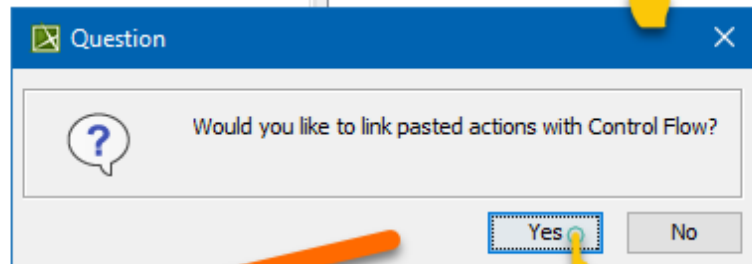
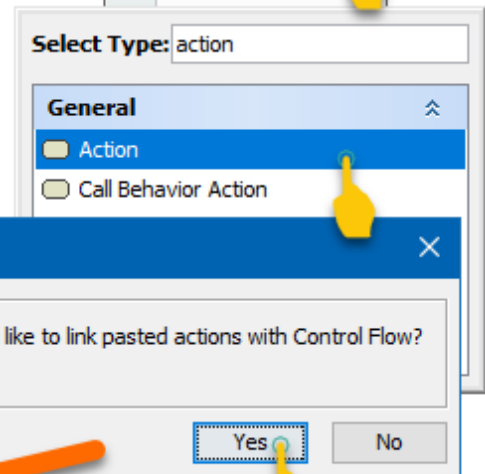
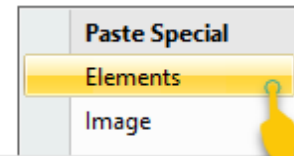
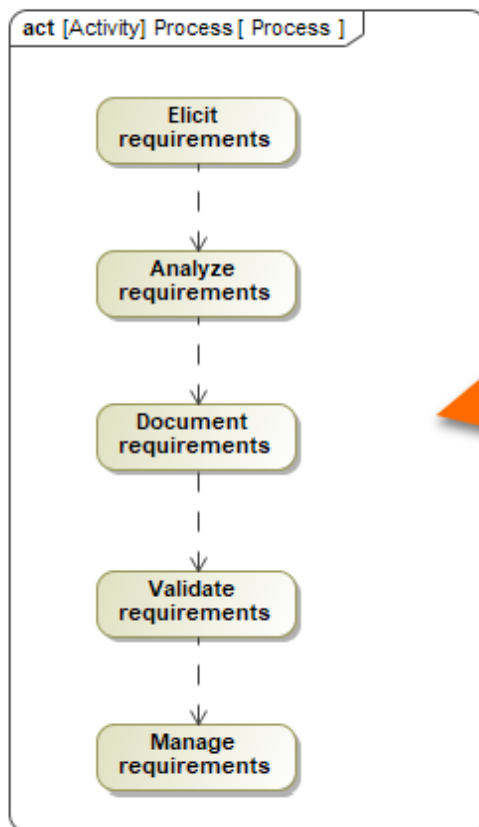
1. Copy the list.
2. Go to the diagram and press Ctrl+V.
3. Select an Action.
4. In the question dialog click **Yes** if you need to connect the Actions with Control Flow relationship.

## A list from the PowerPoint slide

### Key Activities

1. Elicit requirements
2. Analyze requirements
3. Document requirements
4. Validate requirements
5. Manage requirements

Copy and paste on  
Activity diagram

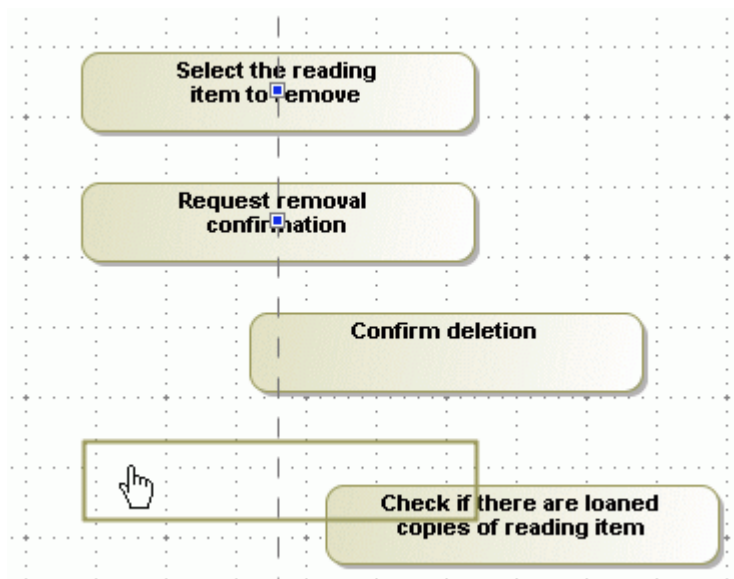


### Smart layout


#### Dynamic centerlines

The centerlines are displayed only when the center of the shape that was moved or newly drawn is located near the center of a preexisting shape in the diagram. These lines help you to easily align shapes when drawing a diagram.

When the center of the shape that was moved coincides with a center of any shape that is placed to its right or left, a horizontal centerline appears. When the center of the shape is close to any center of a shape that is located above or below it, a vertical centerline appears.



To switch off the dynamic centerlines

- Click the **Show Centerlines** button  in the diagram toolbar, or press **C**.
- From the **Options** main menu, select **Environment**. In the **Environment Options** dialog, click the **Diagram** category, and clear the **Show Centerlines in Flow Diagrams** check box in the **Display** properties group.

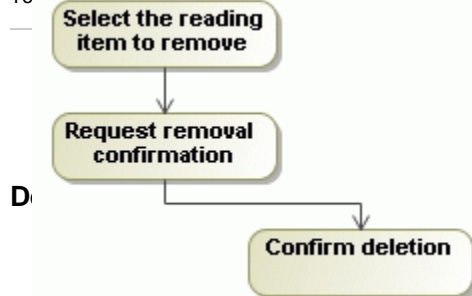
## Diagram orientation

The diagram orientation is used to assign the correct rectilinear path breaks and draw paths between the Activity diagram shapes. The paths can be drawn from side to side, or from the lower to the upper shape borders.

### Example

If you have a vertical diagram orientation and shapes are not in the same centerline, the paths will be connected from the lower border of the first shape to the upper border of the next shape, adding break points:

To



In the **Project Options** dialog, expand **Symbol Styles > Default > Diagram** group (if it is not change the value for the **Diagram Orientation** property.  
**Diagram Properties**, or press Shift+Enter to open the **Diagram Properties** dialog. Change the 1 that dialog.

D

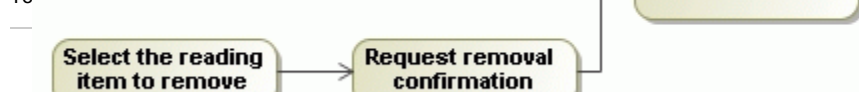
When an element from the Activity diagram, the element will be automatically removed from the model. This  
 codes.  
 Behavior is deleted from the Activity diagram, then this Behavior is also deleted from the model.



This is valid if the assigned Behavior is editable and does not have more usages, i.e. there is not a Call Behavior Action that has a reference to this Behavior.  
 shape, adding breakpoints:

D

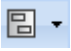
To



: Create Diagram, and then click **Activity Diagram**.



When elements are displayed on the Activity diagram pane automatically upon creating the first diagram under the Activity element.

- When modifying a previously created Activity diagram, select the diagram pane and do one of the following:
  - From the shortcut menu, click **Display > Display Inner Elements**.
  - On the diagram toolbar click , and select **Display Inner Elements**.

#### Related pages

- [Creating diagrams](#)
- [Dragging in Activity diagrams](#)
- [Creating elements from other resources](#)