

Strategic Roadmap

Description

The Strategic Roadmap (St-Rm) view represents the fulfillment of capability requirements and planned achievement of capability at different points in time or during specific periods of time.

The **Strategic Deployment** table shows the planned capability deployment for an actual resource and the responsible actual organization.

Implementation

The Strategic Roadmap (St-Rm) view is represented by:

- **Strategic Deployment diagram.** This diagram addresses the deployment of capabilities to actual organizations over time. This model shows the planned capability deployment and interconnection for a particular Capability Phase. The Strategic Deployment diagram can also be used to support the capability management process and, in particular, assist the planning of fielding.

The intended usage of the Strategic Deployment diagram includes:

- Fielding planning.
- Capability integration planning.
- Capability options analysis.
- Capability redundancy/overlap/gap analysis.
- Identification of deployment level shortfalls.

- **Strategic Phasing diagram.** That diagram is used to plan achievement of capabilities at different points in time or during specific periods of time. The Strategic Phasing diagram supports the capability audit processes and similar processes used across the different COIs by providing a method to identify gaps or duplication in capability provision. This diagram indicates capability increments, which should be associated with delivery milestones within acquisition projects (when the increments are associated with capability deliveries).

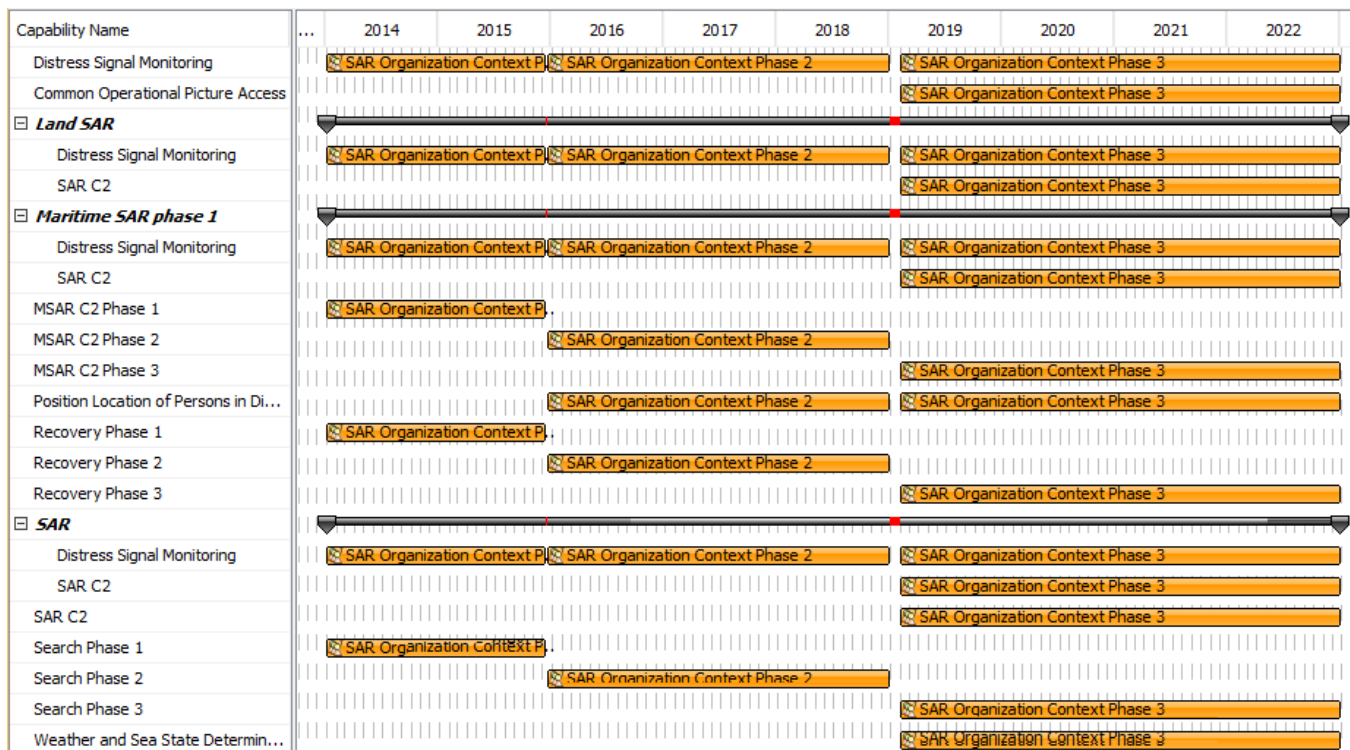
The intended usage of the Strategic Phasing diagram includes:

- Capability planning (capability phasing).
- Capability integration planning.
- Capability gap analysis.
- Strategic Deployment Excel Spreadsheet (.xlsx).

Samples

#	Phase 1 (From 2010-01-01 to 2012-12-01)	C SAR	C Recovery	C Search	C Assistance	C Maritime SAR
1	MRCC		© ^F Maritime Rescue Unit	© ^F Maritime Rescue Unit	© ^F Maritime Rescue Unit	© ^F Maritime Rescue Unit

An example of the Strategic Deployment diagram



An example of the Strategic Phasing diagram

Related elements

- [Capability](#)
- [Capability Configuration](#)
- [Exhibits](#)
- [Actual Project](#)
- [Actual Enterprise Phase](#)
- [Actual Resource](#)
- [Actual Organization](#)
- [Actual Post](#)
- [Actual Person](#)
- [Project](#)
- [Actual Project Milestone](#)
- [Actual Milestone Kind](#)
- [Actual Responsible Resource](#)
- [Capable Element](#)
- [Strategic Phase](#)
- [Resource Architecture](#)
- [Resource Performer](#)
- [Responsible For](#)

Related procedures

- [Working with Strategic Actual Deployment diagram](#)
- [Working with Strategic Phasing diagram](#)
- [Working with Actual Strategic Phases Gantt Chart](#)
- [Working with Strategic Typical Deployment diagram](#)
- [Generating document based reports](#)