

Working with Security Taxonomy diagram

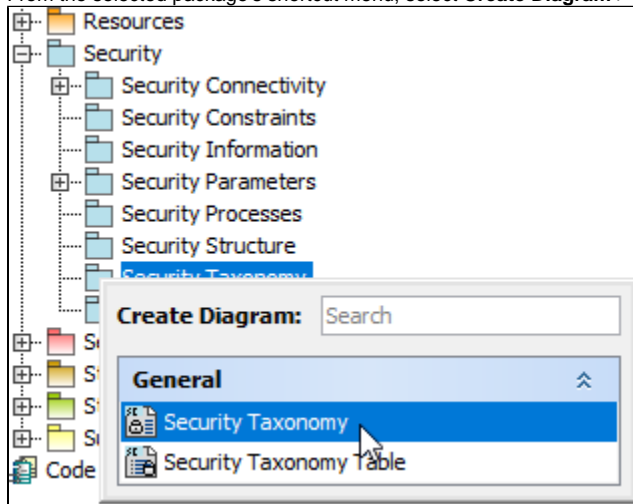
On this page

- [Creating a diagram](#)
- [Creating an element](#)
- [Connect the elements](#)

Creating a diagram

To create an Security Taxonomy diagram

1. In the Containment Tree, select the Security Taxonomy and do one of the following:
 - From the selected package's shortcut menu, select **Create Diagram > Security Taxonomy**.



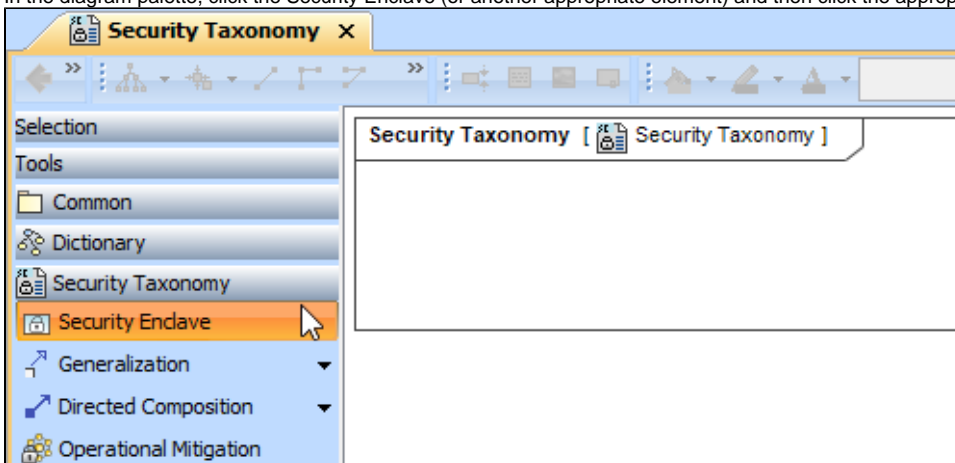
- In the modeling tool's main menu, click **Create Diagram**, search for **Security Taxonomy** and select it.
2. Name a diagram or leave it with the default name.

Creating an element

When the diagram is created, you can start creating the appropriate elements. An example is described using the Security Enclave element, but the same is valid for other elements.

To create an element in a diagram

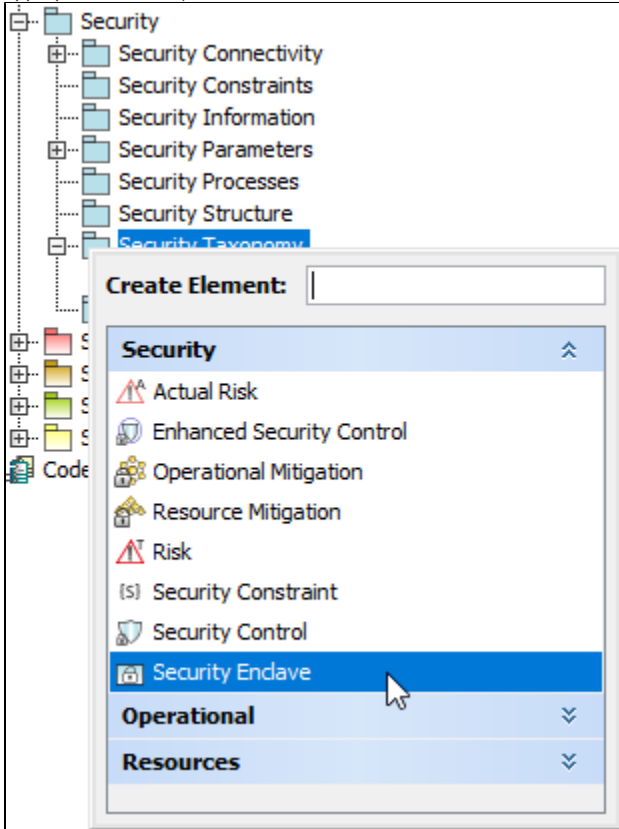
1. In the diagram palette, click the Security Enclave (or another appropriate element) and then click the appropriate place on the diagram pane.



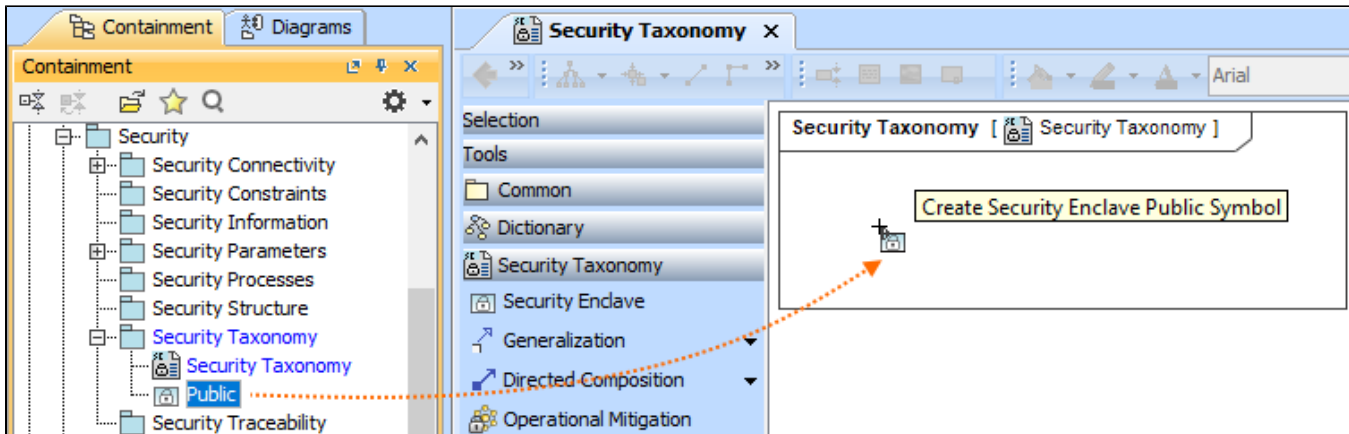
2. Name the element.

To create an element in the Containment tree

1. Right-click the Security Taxonomy package and from the shortcut menu, select **Create Element**. Search for the Security Enclave (or another appropriate element) and select it.



2. Name the element.
3. Drag the created element from the Containment tree to the diagram pane.



To create the elements from other resources (e.g. Word, Excel, HTML)

1. Copy a list in your resource.
2. In a diagram, press Ctrl+V and from the **Paste Special** dialog, choose **Element**.
3. From the **Select Type** dialog, choose Security Enclave (or another appropriate element).

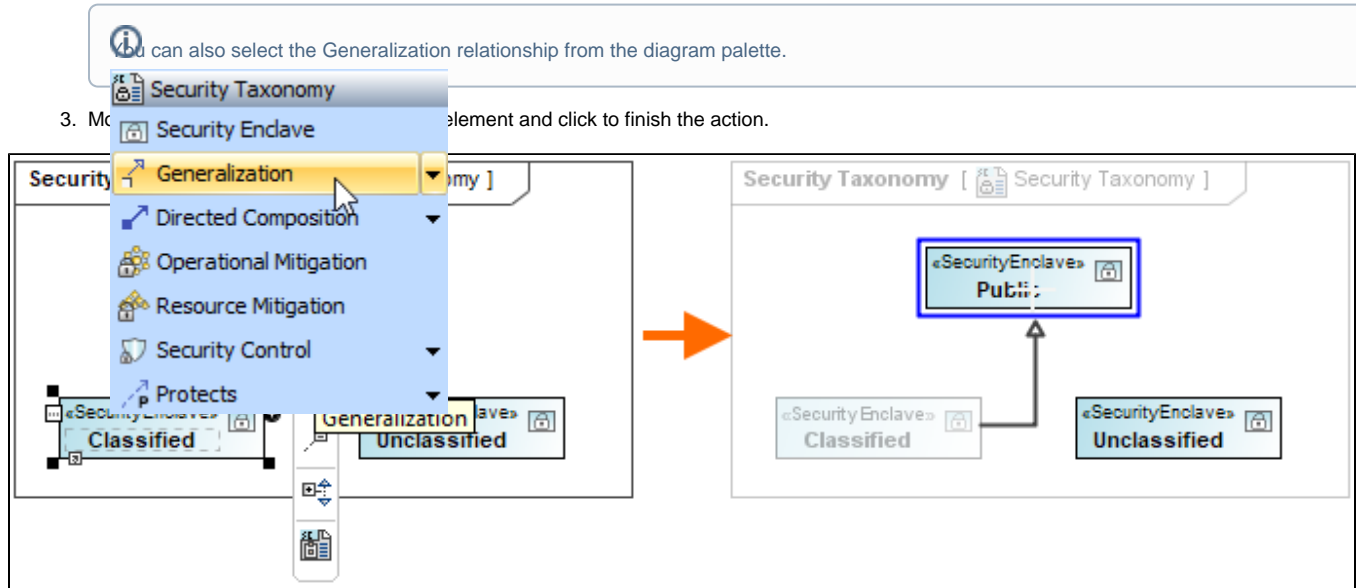
 more information about creating the elements from other resources, see [Creating elements from other resources](#).

Connect the elements

When you have Security Enclave (or another appropriate element) created, you can start connecting them using the Generalization relationship.

To connect the elements with the Generalization relationship

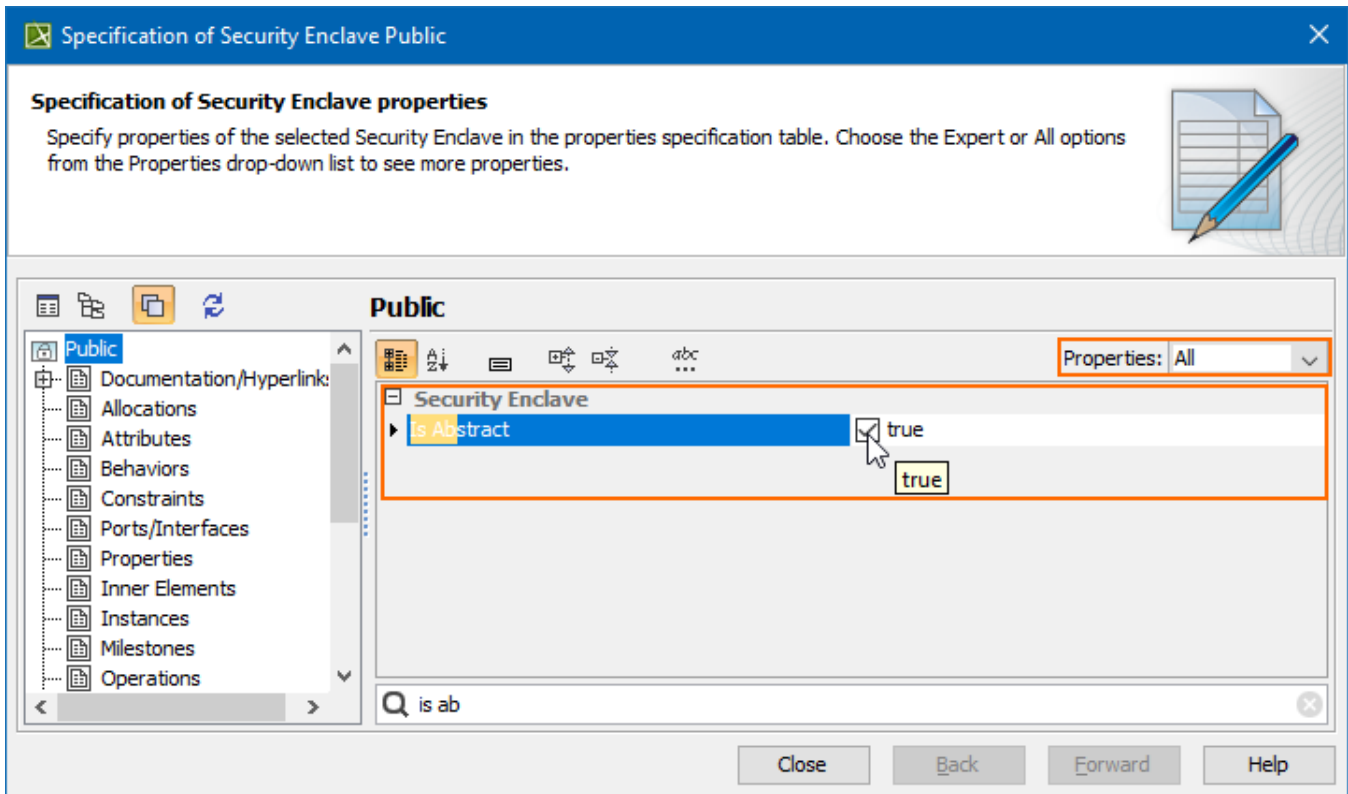
1. Select an element from which the Generalization will be drawn.
2. From the smart manipulator, which appears after you select the element, choose Generalization.



If there is a need, you can make the Generalization target element abstract.

To make an element abstract

1. Select an element and open its [Specification window](#).
2. Make sure that **All** is chosen for **Properties**.
3. Search for **Is Abstract** and set it to *true*.



To view the inherited properties

1. Select an element and open its [Specification window](#).
2. Click Attributes, Properties, or Relations property group.

