

## Working with Projects Taxonomy diagram

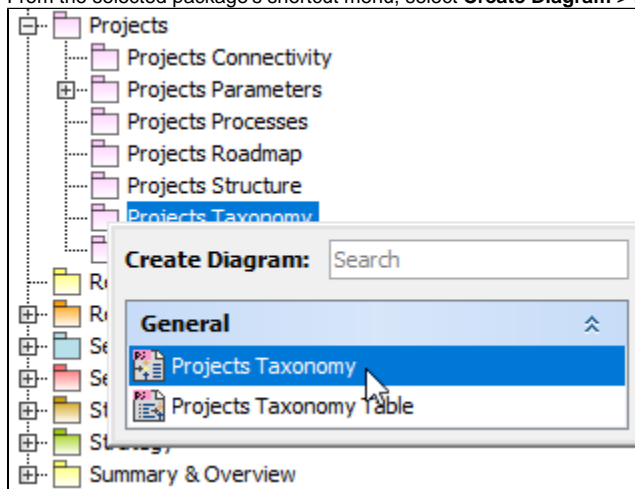
## On this page

- Creating a diagram
- Creating an element
- Connect the elements

## Creating a diagram

To create an Project Taxonomy diagram

1. In the Containment Tree, select the Project Taxonomy and do one of the following:
  - From the selected package's shortcut menu, select **Create Diagram > Project Taxonomy**.



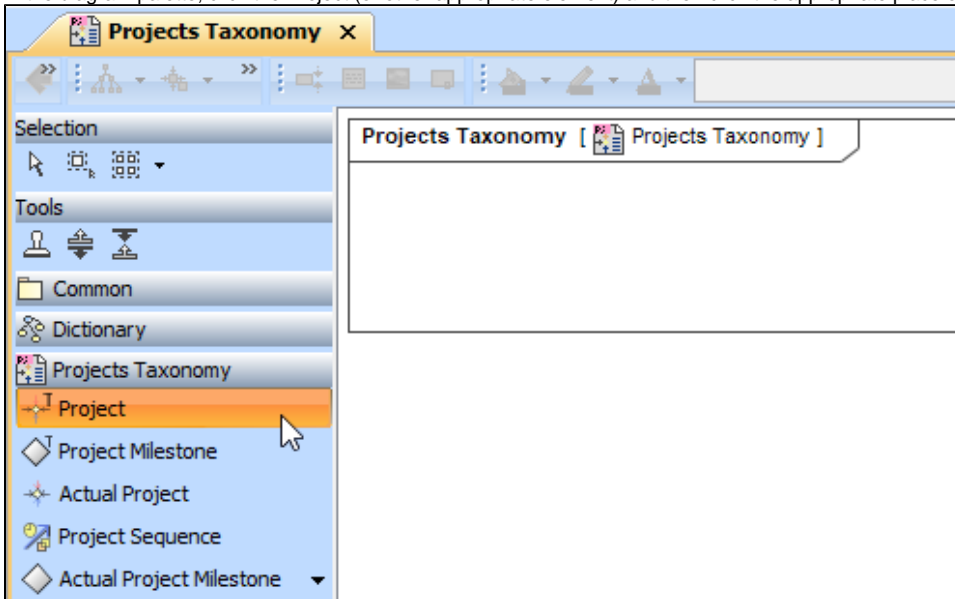
2. Name a diagram or leave it with the default name.

## Creating an element

When the diagram is created, you can start creating the appropriate elements. An example is described using Project element, but the same is valid for other elements.

## To create an element in a diagram

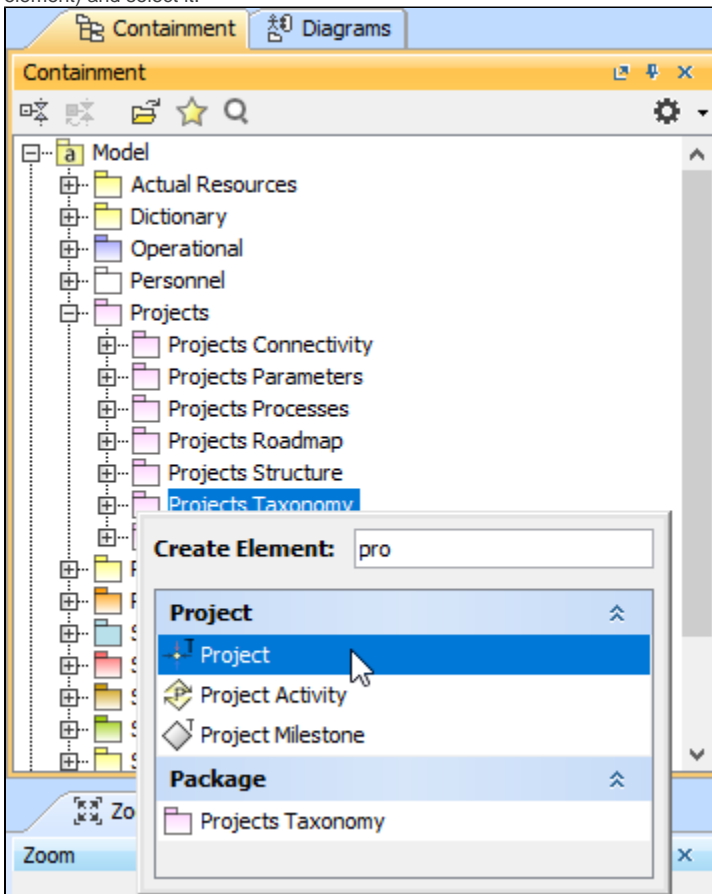
1. In the diagram palette, click the Project (or other appropriate element) and then click the appropriate place on the diagram pane.



2. Name the element.

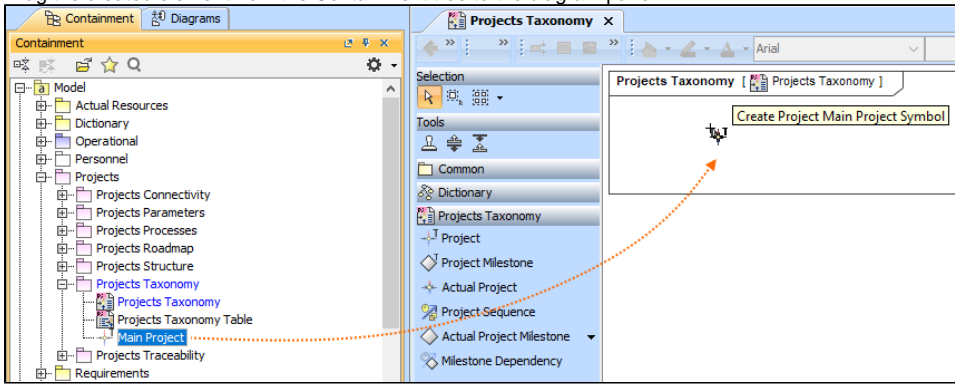
To create an element in the Containment tree

1. Right click the Project Taxonomy package and from the shortcut menu, select **Create Element**. Search for the Project (or other appropriate element) and select it.



2. Name the element.

3. Drag the created element from the Containment tree to the diagram pane.



To create the elements from other resources (e.g. Word, Excel, HTML)

1. Copy a list in your resource.
2. In a diagram, press Ctrl+V and from the **Paste Special** dialog, choose **Element**.
3. From the **Select Type** dialog, choose Project (or other appropriate element).

 more information about creating the elements from other resources, see [Creating elements from other resources](#).

## Connect the elements

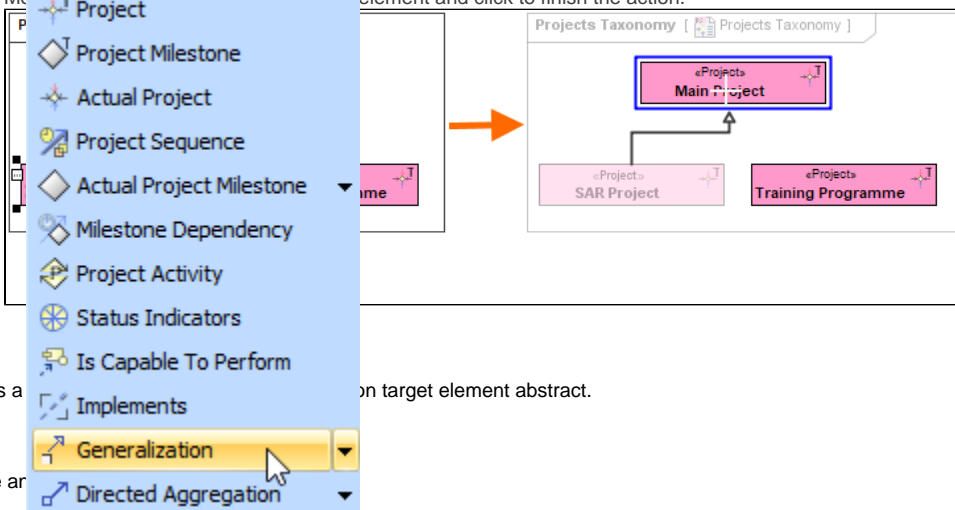
When you have Project (or other appropriate element) created, you can start connecting them using the Generalization relationship.

To connect the elements with the Generalization relationship

1. Select an element from which the Generalization will be drawn.
2. From the smart manipulator, which appears after you select the element, choose Generalization.

 you can also select the Generalization relationship from the diagram palette.

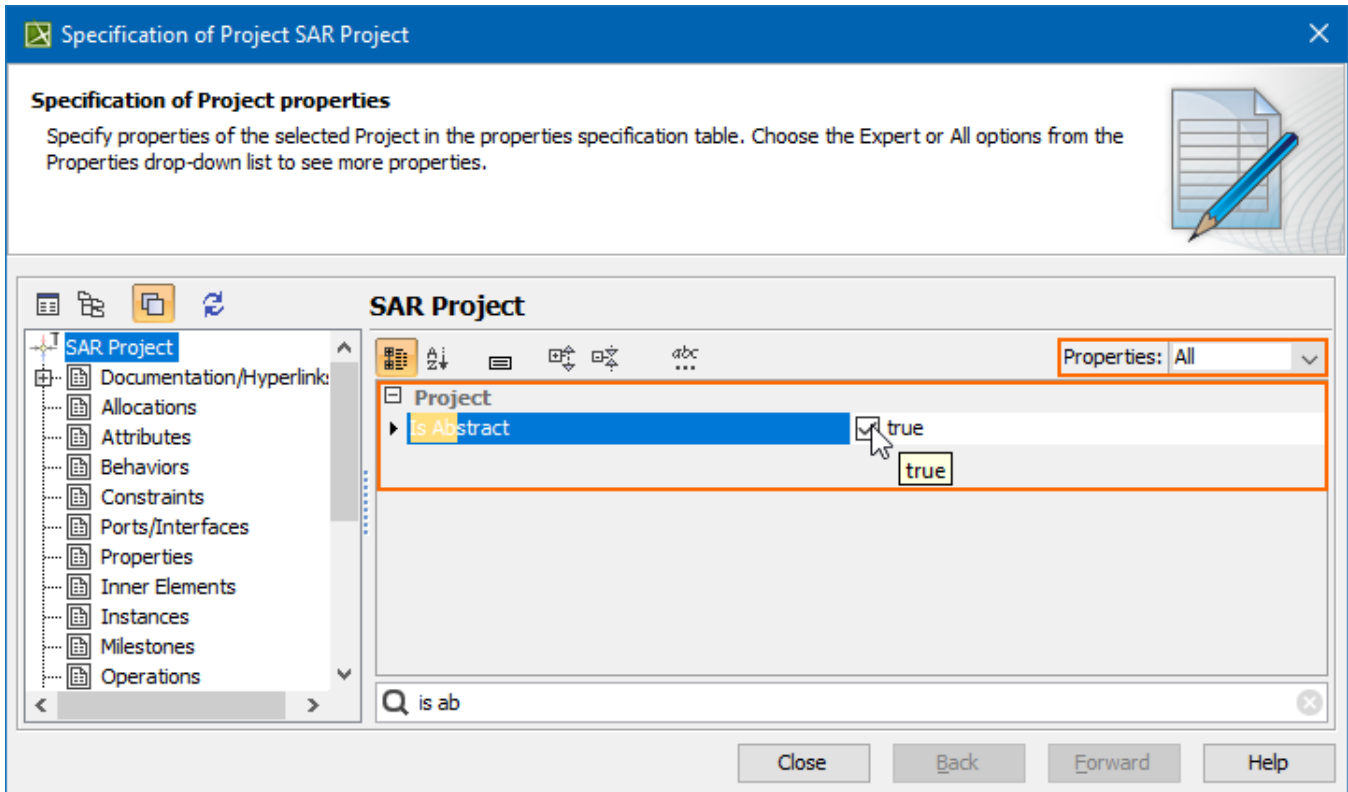
3. Move the mouse over the element and click to finish the action.



If there is a target element abstract.

To make an

1. Select an element and open its [Specification window](#).
2. Make sure that **All** is chosen for **Properties**.
3. Search for **Is Abstract** and set it to **true**.



To view the inherited properties

1. Select an element and open its [Specification window](#).
2. Click Attributes, Properties, or Relations property group.

