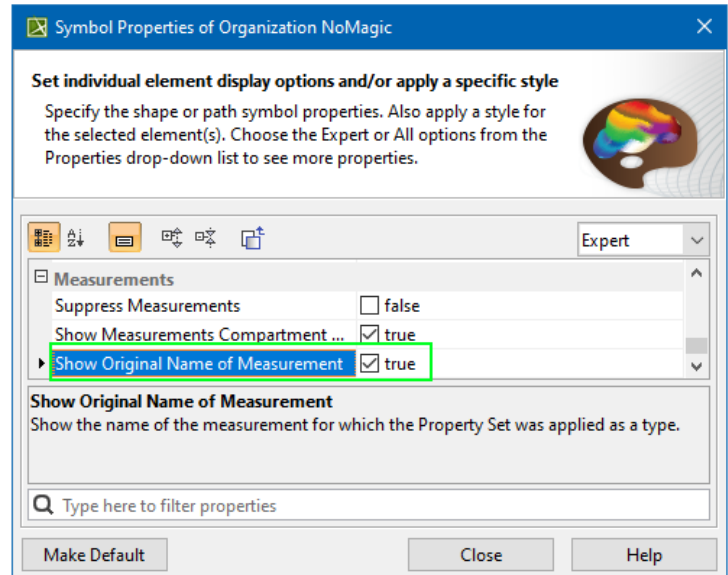
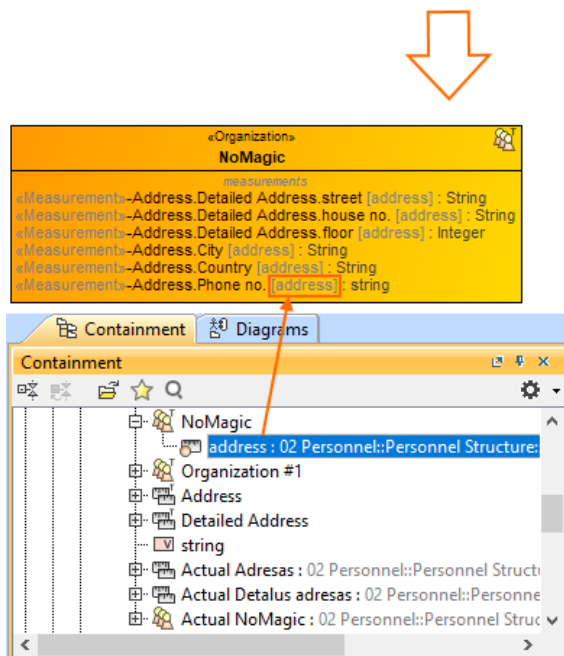
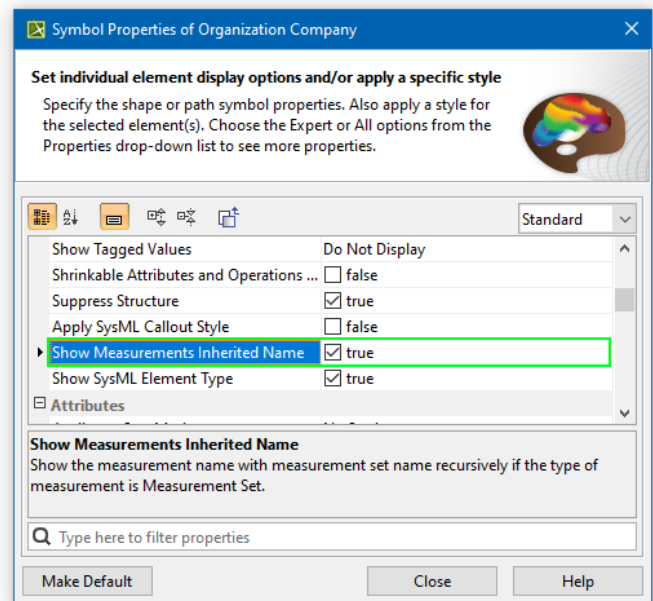
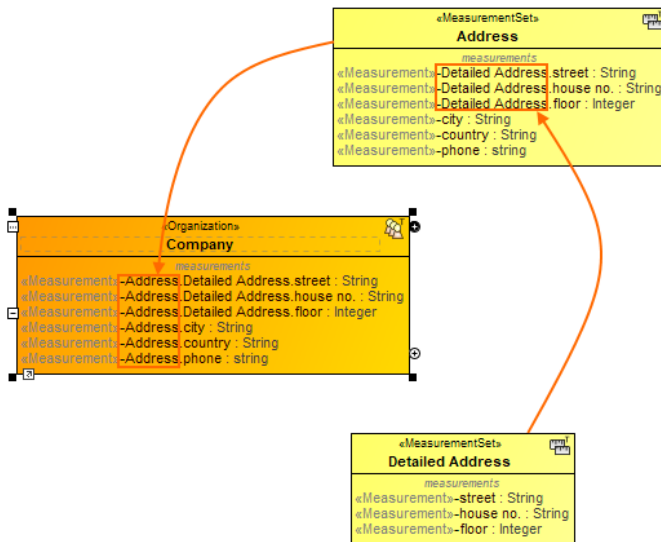


Measurements

A measurement is a property of an element representing something in the physical world, expressed in amounts of a unit of measure. You can create measurements either in the measurements table or on the element shape in the diagram .

Note, that when you display the measurements in the measurements compartment, you can choose to show the inherited names through the dot notation when the Property Set is applied as a type. In this case, the original name of the measurements will no longer be shown. However, if you need to see the original name, set the **Show Original Name of Measurement** symbol property to true. The original name will be displayed in brackets and in gray font (see the image below).



Learn more about working with measurements:

- [Managing Measurement Sets and Actual Measurements](#)
- [Working with Typical Measurements table](#)
- [Working with hierarchical Typical Measurements table](#)
- [Working with hierarchical Actual Measurements table](#)
- [Creating Actual Measurements table](#)
- [Generating an Actual Measurements table from a Typical Measurements table](#)
- [Property Set elements for measurement tables](#)

