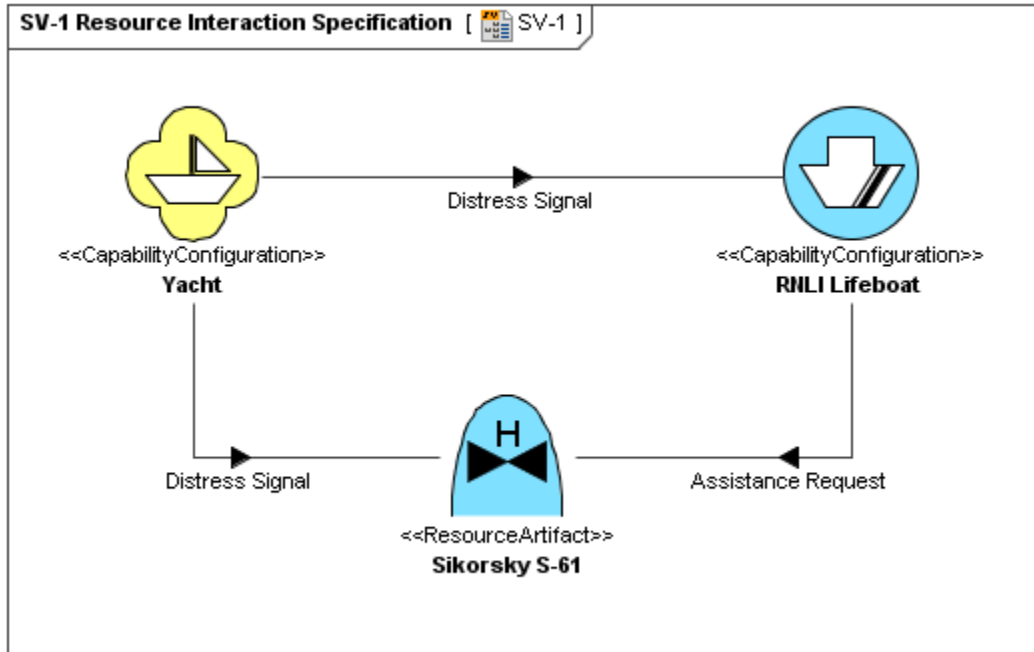



# Applying military symbols

Military symbols can be applied to resources in t.





 By default, military symbol libraries will be disabled for the UAF projects.

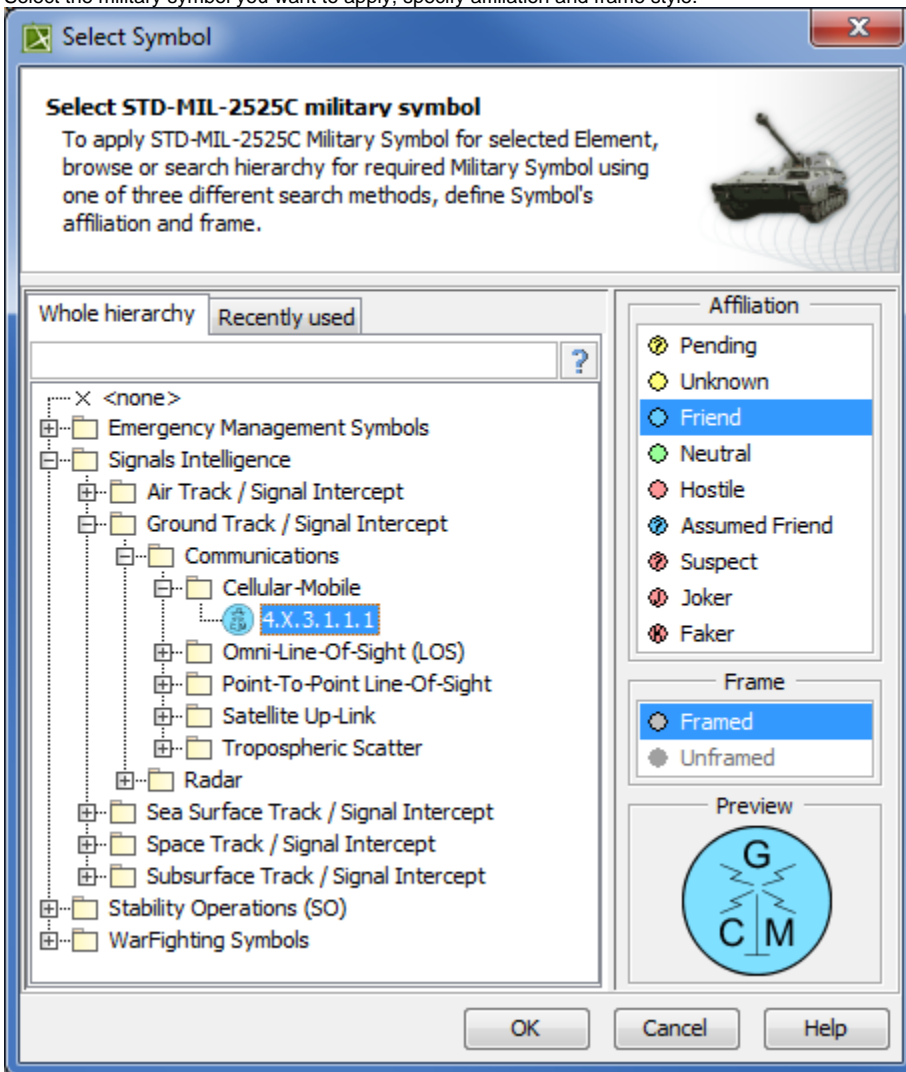
If you will need to use the military symbols:

- When creating a new project select the needed library version.
- In the **Project Options** dialog, **General** > **UAF** options group, change the **Use MIL-STD-2525 Symbology Library** option value from **N one** to the needed library version.

To apply military symbol for resource shape

1. Open the **Select Symbol** dialog:
  - Create resources from MIL-STD-2525 Symbology toolbar (in MODAF only).
  - Select resource and click  on the smart manipulator toolbar (in MODAF only).
  - Open the **Specification window** of any UAF element, select **Image** property cell and click .

2. Select the military symbol you want to apply, specify affiliation and frame style.



3. Click **OK**.  
The military symbol is applied for the resource shape.