
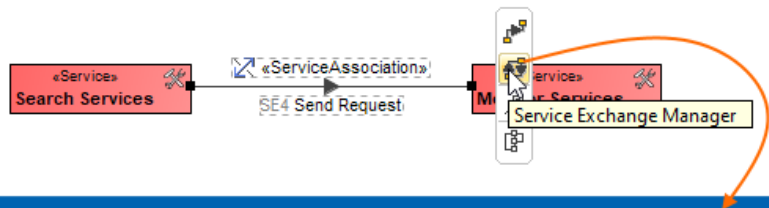


# Service Exchange Manager dialog

The **Service Exchange Manager** dialog enables analysis and management of the Service Exchanges data. You can edit existing Service Exchanges by adding new Service Exchange Items, realizing or ignoring existing Service Exchanges on selected relationships, specifying producing and consuming Service Functions.

To open a **Service Exchange Manager** dialog

1. Select a Service Association, Service Connector, Service Control Flow, Service Object Flow, or Service Message in the diagram pane.
2. On the smart manipulator, click  .  
The **Service Exchange Manager** dialog opens.



Service Exchange Manager

Manage Service Exchange

To create new Service Exchange click 'Add' button. To remove existing Service Exchange click 'Delete' button. You can also edit existing Service Exchange by adding new Service Exchange Items, realizing or ignoring existing Service Exchange on selected relationship, specifying producing and consuming Service Functions.

Add

Delete

Show Inherited

Show Aggregated

Redefine

Filter:

#	Realize	Exchange ID	Exchange Name	Service Exchange Item	Sending Service	Receiving Service	Producing Service Function	Consuming Service Function
1	<input checked="" type="checkbox"/> true	SE4	Send Information	Send Request	Search Services	Monitor Services		

☐ Regular ☐ Inherited / Aggregated

Realize All

Realize None

Close

Help

## Related pages

- [Working with Services Connectivity diagram](#)
- [Realized Service Exchange wizard](#)