

COM2048

Abbreviation

COM2048

Message

Function should be performed by the Resource Performer using the Is Capable of Performing relationship.

Description

Function should be performed by the System Resource using the Is Capable To Perform relationship.

Severity

Info

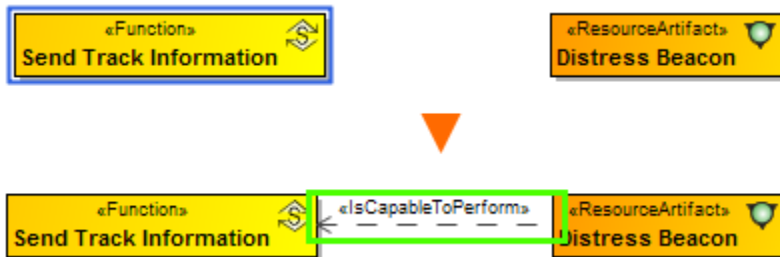
Context element

Function

Solvers

- **Select System Resources** - the System Resource is selected.
- **Create System Resource** - the System Resource is created.

Example



Function is performed by System