

NSOV-4 Service Orchestration

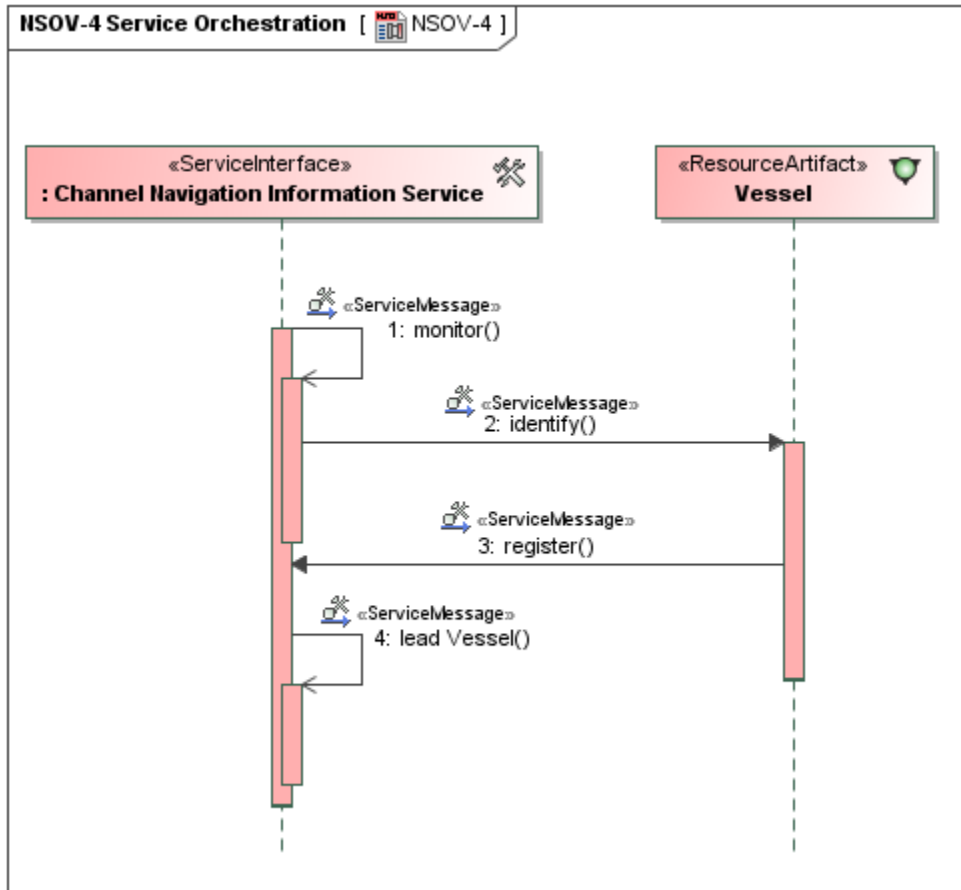
Description

This view shows how operational activities can be supported by various services, for example, within a given scenario, certain defined operational activities within nodes defined as part of NOV-2 can be supported by a given set of services.

Implementation

NSOV-4 can be represented using a NSOV-4 diagram which is based on the UML Sequence diagram.

Sample



NSOV-4 Service Orchestration

Related elements

- [Interaction](#)
- [Service Message](#)
- [Service Interface](#)
- [Flow Property](#)