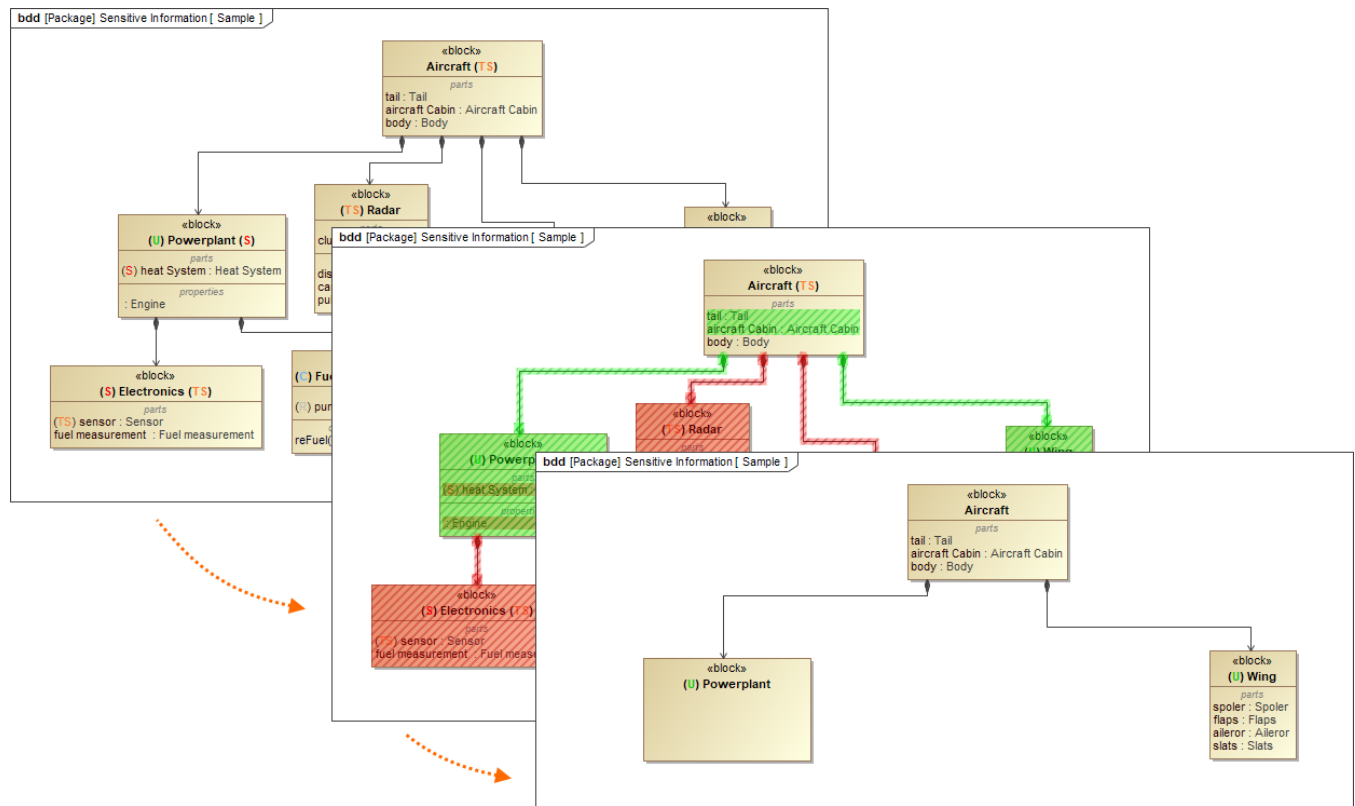


Sensitive Element Redaction

On this page:

- [Previewing the model prior to performing Sensitive Element Redaction](#)
- [Performing a Sensitive Element Redaction](#)
- [Sensitive Element Redaction transformation details](#)

Sensitive Element Redaction allows you to narrow down the full model by removing elements with the selected Data Markings. Additionally, you can choose to remove all Data Markings from the model and save it as a separate project. You can also use the preview function prior to performing the Sensitive Element Redaction.



The preview and the result of a model transformed via Sensitive Element Redaction by selecting the *Restricted (R)* Data Marking. This removes all elements with the *Restricted (R)* and all the higher Data Markings from the *Security Classification* category (*Confidential (C)*, *Secret (S)*, and *Top Secret (TS)*).

The model is transformed based on the selected Data Marking and its position within the [order](#) of its category. Selecting a Data Marking that is lower within the order of its category means that the elements with higher Data Markings will also be removed from the model. See the example above.

Previewing the model prior to performing Sensitive Element Redaction

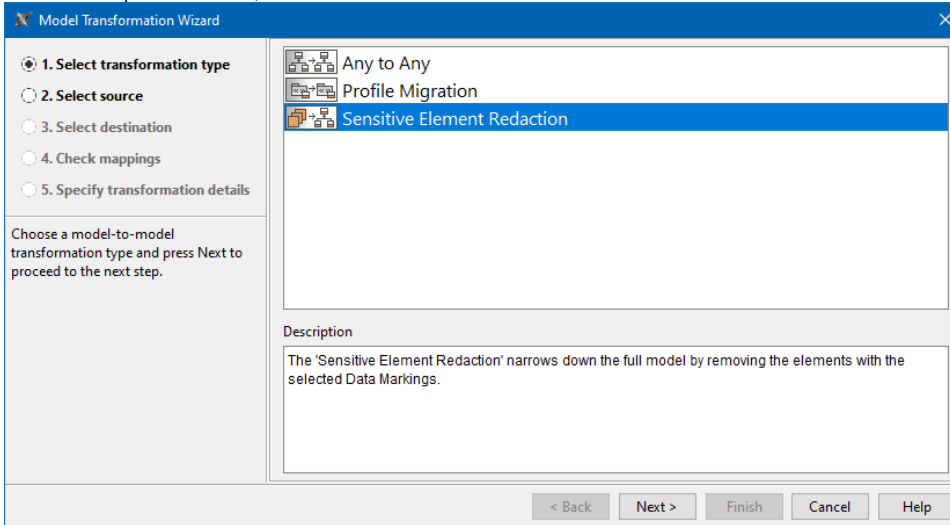
To preview the model prior to performing Sensitive Element Redaction

1. Open the diagrams you want to preview.
2. In the Main toolbar, next to the **Preview** option, do one of the following:
 - a. Click the button **Preview: - no preview -** and select the Data Marking(s) you want to remove from the model.
 - b. Click the button **Preview: - no preview -**, and in the opened dialog, select the Data Marking(s) you want to remove from the model. Click **OK**.
The elements with the selected Data Marking(s) that would be removed from the model are highlighted in red.

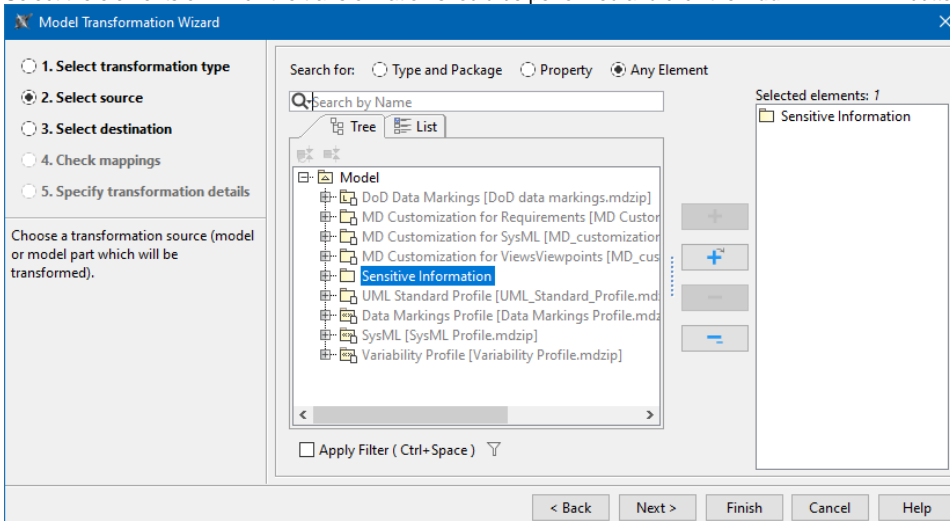
Performing a Sensitive Element Redaction

To perform a Sensitive Element Redaction

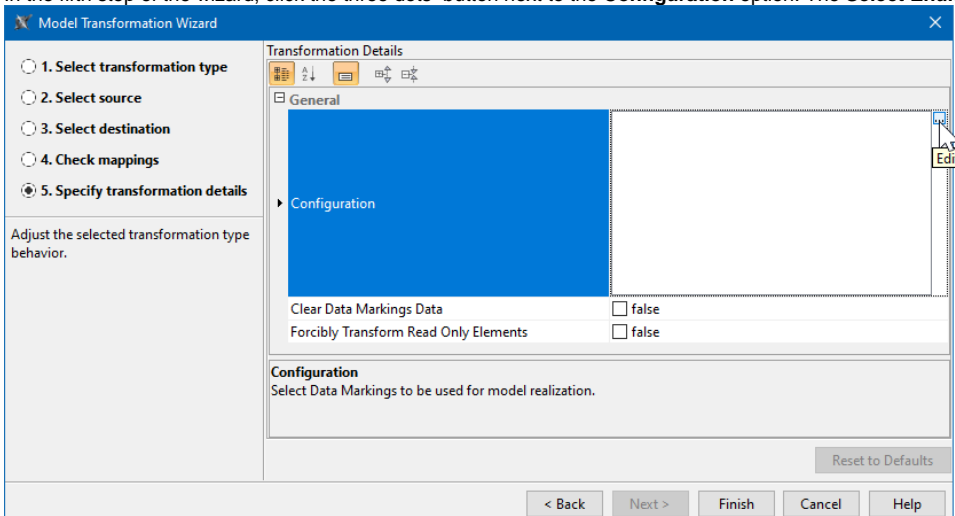
1. In the Main menu, select **Tools > Model Transformations**. The **Model Transformation Wizard** opens.
2. In the first step of the wizard, select **Sensitive Element Redaction**. Click **Next**.



3. Select the elements on which the transformation should be performed and click the **Add** button. Click **Next**.



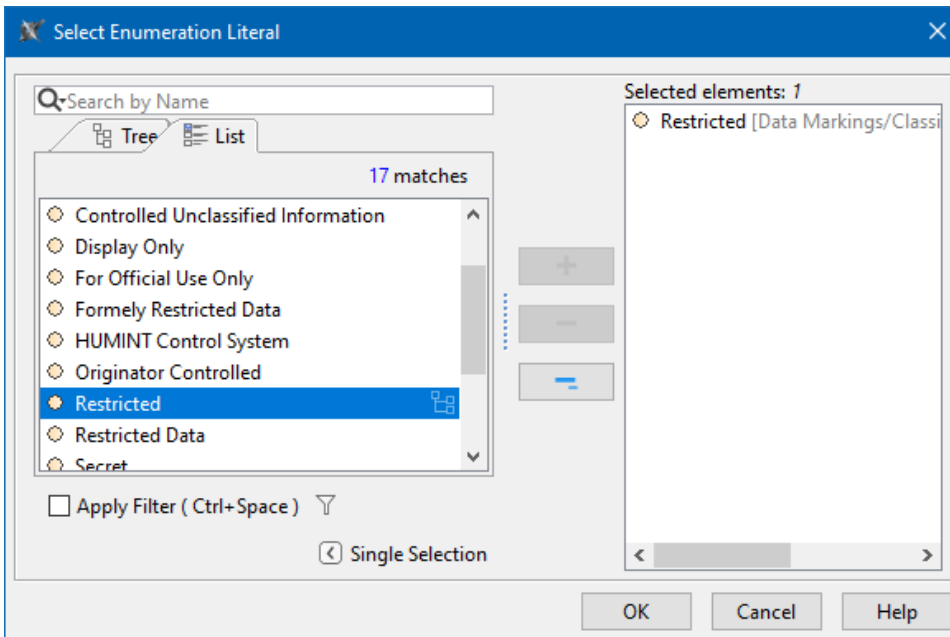
4. In the fifth step of the wizard, click the three dots button next to the **Configuration** option. The **Select Enumeration Literal** dialog opens.



5. Select the Data Markings you want to remove from the model. Click **OK**.



- To view the list of Data Markings, select the **List** tab in the **Select Enumeration Literal** dialog.
- Use the **Multiple Selection** button to select multiple Data Markings.



6. (Optional) To remove all Data Markings from the elements of the redacted model, set the **Clear Data Markings Data** option to *true*.
7. (Optional) To modify or remove the normally non-editable project elements during the transformation without trying to lock them, set the **Forcibly Transform Read-Only Elements** option to *true*.
8. Click **Finish**.
Elements with both selected Data Markings and higher Data Markings are removed from the model (see the example at the top of the page).



After performing a Sensitive Element Redaction, make sure to update the [Diagram Banners](#) and the [Containment Markings](#) of the project.

Sensitive Element Redaction transformation details

Option	Default value	Value options	Description
Configuration	-	multi-selection	Select Data Markings to be used for model realization.
Clear Data Markings Data	false	true/false	If set to true, all Data Markings, in addition to the elements with the specified Data Markings, are removed from the realized model variant. If set to false, only the elements with the specified Data Markings are removed.
Forcibly Transform Read-Only Elements	false	true/false	If set to true, the normally non-editable project elements will be modified or removed during the transformation without trying to lock them.