


Ignored Data Marking Categories

On this page:

- [Adding a category to the Ignored list](#)
- [Removing a category from the Ignored list](#)

You can choose to have certain Data Marking Categories ignored in the model. This means that the Data Marking Category:

- Will no longer be available in the Data Markings shortcut menu.
- The Data Markings that belong to this category will no longer be visible on the elements they are added to, including Containment Markings.
- The Data Markings that belong to this category will no longer be represented on the Diagram Banner.

 The Data Markings of an ignored category that were added to the elements prior to the category being added to the Ignored list will be displayed again once the category is removed from the Ignored list.

 **Important**
If you add/remove Data Marking Categories to/from the Ignored list, ensure that you:

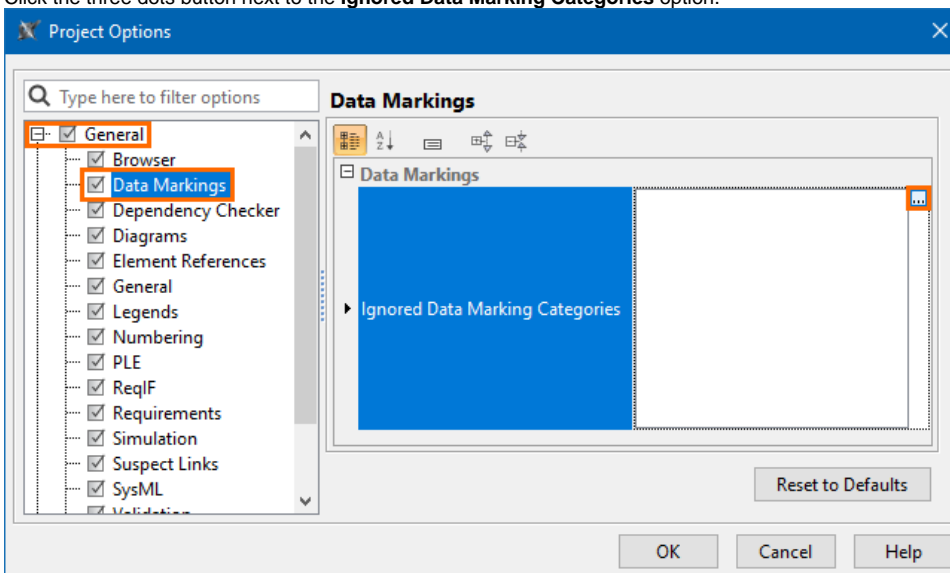
- Refresh the project (click F5 on the keyboard or click **View > Refresh** in the tool) to see the changes on the element symbol portion markings.

Adding a category to the Ignored list

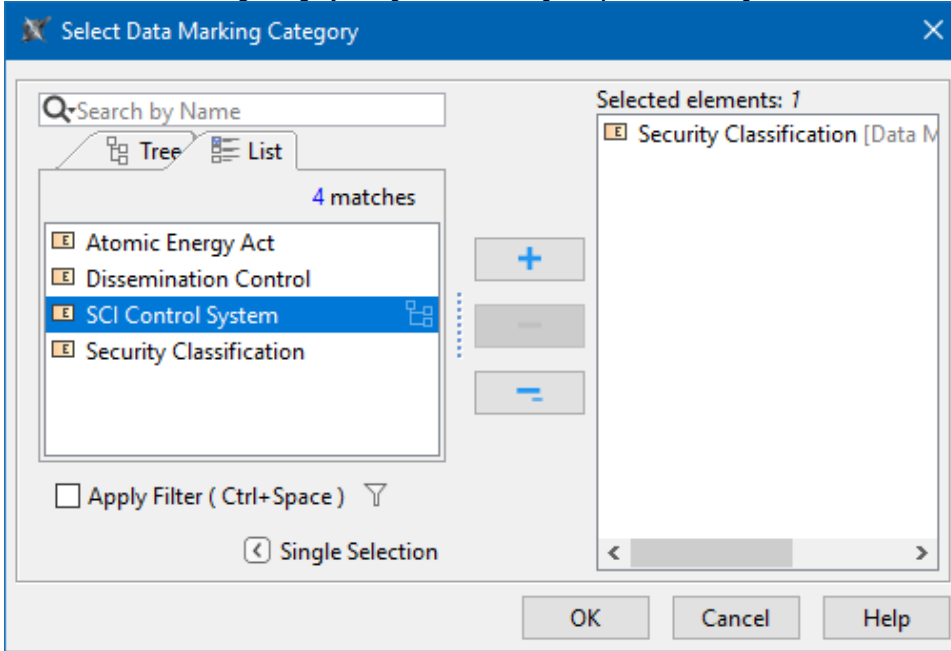
[Update the Diagram Banner](#) to see the changes in the Diagram Banner markings.

To add a category to the Ignored list

1. In the main menu, select **Options > Project**. The **Project Options** dialog opens.
2. In the **General** group, select **Data Markings**.
3. Click the three dots button next to the **Ignored Data Marking Categories** option.



4. In the **Select Data Marking Category** dialog, select the categories you want to be ignored and click the **Add** button. Click **OK**.




5. Click **OK**.

Removing a category from the Ignored list

To remove a category from the Ignored list

1. In the main menu, select **Options > Project**. The **Project Options** dialog opens.
2. In the **General** group, select **Data Markings**.
3. Click the three dots button next to the **Ignored Data Marking Categories** option. The **Select Data Marking Category** dialog opens.

 To remove all categories from the Ignored list, click the **Reset to Defaults** button.

4. On the right side of the dialog, select the categories that you want to remove from the Ignored list.
5. Click the **Remove** button. Click **OK**.
6. Click **OK**.