

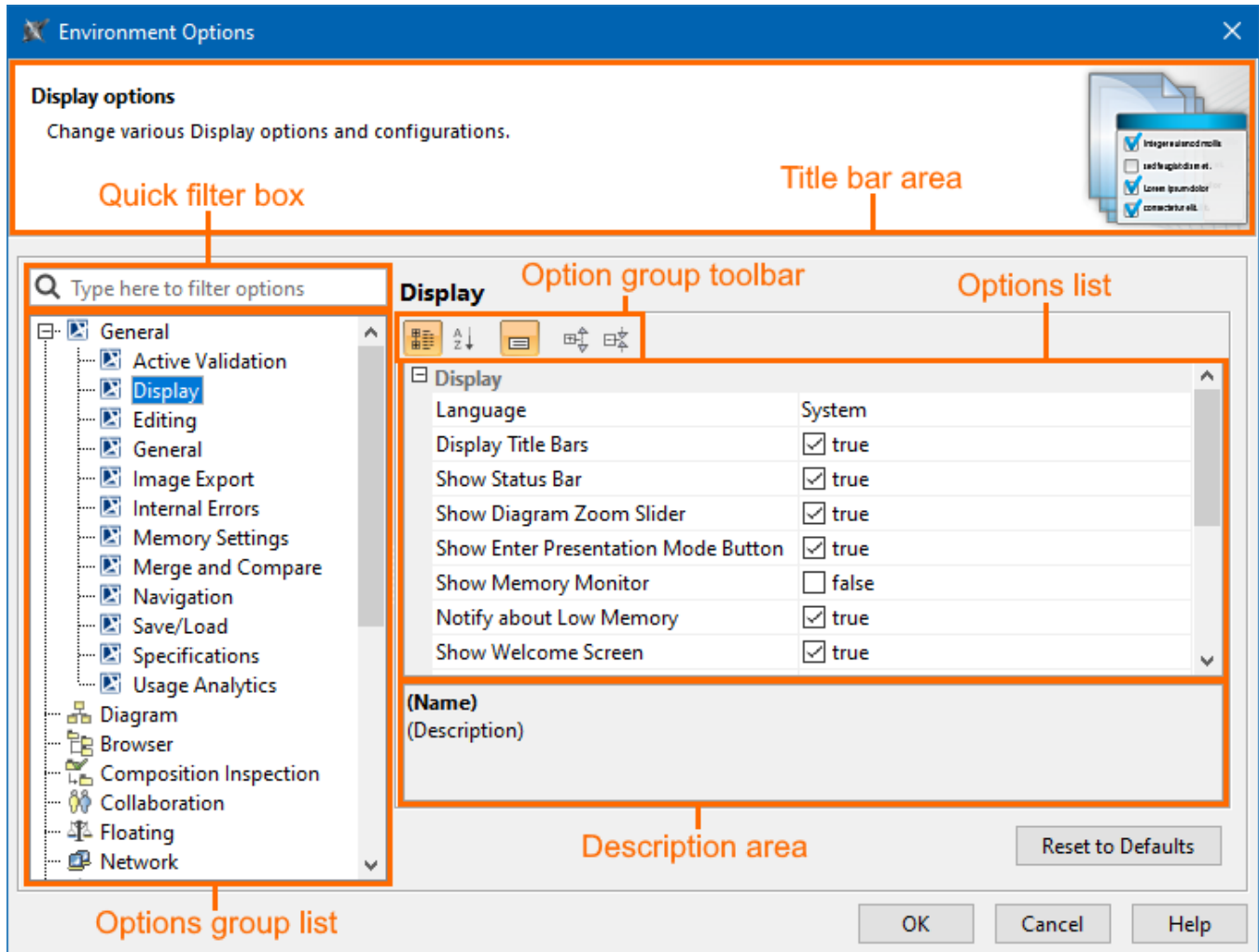
Customizing environment options

You can customize the application environment according to your preferences via the **Environment Options** dialog.

Opening the Environment Options dialog

To open the **Environment Options** dialog

- From the **Options** menu, select **Environment**.



The **Environment Options** dialog contains various project-independent options grouped by different features (for example, diagrams, Model Browser, code engineering). Each option group is available in a different tab. Tabs are displayed in the tab tree.

An option value can be simply changed by typing a new value, setting a value to true/false, or selecting a value from the list. Click the **Reset to Defaults** button to restore default option values.

Changing options

In order to change the desired environment option, first of all, you may need to find it. In this case, use the [quick filter](#) in the dialog. Filtering is performed in all available options, not only in the selected option group. To better understand an option, you can read its description, which tells the effect of changing the option value.

To read the option description

1. Make sure that the Show Description mode is turned on in the **Environment Options** dialog. To turn the Show Description mode on or off, click the Show Description button on the tab toolbar.



2. Click an option whose value you want to change.
3. Read the option description in the area below the tab options list. You are ready now to change the option value.

Environment Options



The table below displays the default environment options. Additional options may appear based on installed plugins.

Option	Default value	Value options	Description
General			
Active Validation			
Active Validation	All	All System	Specify the active validation mode. Select 'All' to enable all active validation suites. Select 'System' to enable only those validation rules that are responsible for project composition integrity.
Active Validation Period (seconds)	2	Real	Specify the period (in seconds) of waiting until the active validation will be run in the model. Note: better performance of the application can be ensured by specifying a longer period.
Display			
Language	English	System English French German Japanese Russian	Specify the language for the application GUI. Restart the application to apply changes.
Display Title Bars	true	true/false	Set to true to display the title bar area in application dialogs.
Show Status Bar	true	true/false	Set to true to display the status bar at the bottom of the application window.
Show Diagram Zoom Slider	true	true/false	Set to true to display the diagram zoom slider.
Show Enter Presentation Mode Button	true	true/false	Set to true to display the Enter Presentation Mode button on the status line.
Show Memory Monitor	false	true/false	Set to true to display the memory monitor on the application status line.
Notify about Low Memory	true	true/false	Set to true to be notified when low memory might slow down performance.
Show Welcome Screen	true	true/false	Set to true to display the Welcome screen if there are no opened projects.
Hide Toolbars in the Full Screen Mode	true	true/false	Set to true to hide the main toolbar in the full screen mode.
Show the Exit Full Screen Toolbar	true	true/false	Set to true to display the Full Screen toolbar in the full screen mode.
Show Extra Features	true	true/false	Set to true to show the features which are available only in a higher edition or not installed plugins.
Hint Display Mode	Display all hints	Display custom hint set Display all hints Do not display	Select 'Display all hints' to show all hints about the application functionality that are related to user actions. Select 'Display custom hint set' to show a set of hints, excluding the ones that were selected by the user not to be shown. Select 'Do not display' to hide hints. Hints are displayed in the lower right corner of the application.
Notifications Display Mode	Display custom notifications set	Display custom notifications set Display all notifications Do not display	Select 'Display all notifications' to show all notifications about specific events happening in the system. Select 'Display custom notifications set' to show a set of notifications, excluding the ones that were selected by the user not to be shown. Select 'Do not display' to hide notifications. Notifications are displayed in the lower right corner of the application or at the bottom of some dialogs.

Show Boolean Property Checkbox Text	true	true/false	Set to true to display label texts next to check boxes in the boolean property editor.
Show Active Navigation Icons	true	true/false	Select to show active navigation icons on element symbols. An icon represents an active hyperlink or a diagram that opens when you double-click the element symbol. Elements with an active hyperlink or a modified default navigation are marked with an icon in the Model Browser.
Show Font Face in Font List	false	true/false	Set to true to display in the original font the font names that are listed in the drop-down list box on the diagram toolbar.
UI Font	Default L&F Font	multi-list	Change the default font the application should be displayed in.
Editing			
Opaque Expression Displaying Lines	3	1-5 All lines	Specify the number of lines for displaying an opaque expression in element specification windows.
Synchronize Diagram Name with its Context Name	true	true/false	Set to true to synchronize the diagram name with the diagram context name. For example, an activity diagram is automatically named after the name of the activity that owns the diagram.
Create Behavior Diagram When the Behavior Type is Selected for Transition Effect or State Activities	true	true/false	Set to true to create a behavior diagram when selecting the Behavior Type for the Transition Effect and State Entry/Exit/Do activities.
Automatically Create Slots in Link	true	true/false	Set to true to automatically create slots in links. The created slots will always reference instance specifications connected to the link.
Show message When Moving Sections	true	true/false	When a relation end is moved, the relation is moved too. This property controls whether a question message should be displayed to the user with the question to move the relation or not.
Opaque Expression Default Language	English	Binary (recommended) Structured Expression (recommended) English OCL2.0 Javascript Rhino Jython Javascript Nashorn (deprecated) Groovy (recommended) BeanShell	Specify the default language for opaque expressions.
General			
Save Settings on Exit	true	true/false	Set to true to store the altered settings within the current application session and apply for all future sessions.
Show Tip of the Day	false	true/false	Set to true to display the Tip of the Day dialog every time the application is started.
Show Tips While Running Long Tasks	true	true/false	Set to true to display the Tip of the Day dialog within the progress bar while running long tasks.
Recent Files List Size	4	1-30	Specify the number of recently opened projects that appear under the File menu.
Recent Server Projects List Size	8	1-30	Specify the number of recently opened server projects that appear under the Recent Projects menu in the Collaborate Main Menu.
Recent Windows List Size	4	1-10	Specify how many recently opened diagrams you want to be listed under the Window menu.
Diagram Tabs Limit	20	1-100	Set the open diagrams limit. If the number is exceeded, the last active diagram is closed.
Undo List Size	100	Real	Specify the number of actions that will be available for undo/redo operations. Important: the maximum undo/redo list size is 500.
Image Export			
Save Diagram Background in Image	false	true/false	Set to true to save the diagram together with its background as an image. Otherwise, the diagram background becomes white after saving the diagram as an image.
JPEG Compression Quality	1.0	0.0-1.0	Specify the quality for saving an image as a JPEG file. Set the value to 1.0 to define the highest quality.

Use SVG <text> Tag for Text Output	false	true/false	Set to true to turn all text into SVG shapes during the image conversion.
Render SVG Icons as Raster Images in EMF	false	true/false	Set to true to render SVG icons as raster images in the EMF output. Otherwise, the SVG icons are rendered as vector graphics.
Image Resolution (DPI)	72	1-4800	Specify the measure for spatial printing.
Exported Image Size [%]	100	10-1000	Specify exported image scaling ratio in percent. If the set value is higher than 100, then the view is enlarged (zoomed in) before generating an image. Raster image will not lose its quality as additional pixels are introduced.
TIFF Color Space	RGB	RGB CIE Lab YCbCr	Specify the color format for the tagged image file format (TIFF).
TIFF Compression	LZW	No compression LZW JPEG in TIFF Deflate /Inflate Byte-oriented RLE ZIP in TIFF	Specify the type for compression of the tagged image file format (TIFF).
Internal Errors			
Display Internal Errors	true	true/false	Set to true to display internal errors. It is recommended to have this option selected to get early warnings on potential data loss or model corruption.
Automatically Submit Internal Errors	false	true/false	Set to true to automatically submit internal errors to the support.
Attach Log File to Automatic Internal Errors Report	true	true/false	Set to true to attach the log file when submitting internal errors automatically to the support.
Memory Settings			
Maximum Heap Size (-Xmx), in megabytes	4000	Real	Sets the maximum memory allocated for the product in megabytes. If the out-of-memory error dialog appears during your work, you can change the maximum java heap size by using this option.
Thread Stack Size (-Xss), in kilobytes	1024	Real	Thread stack size is the amount of memory allocated to a single JVM thread in kilobytes.
Merge and Compare			
Optimize for	Speed	Speed Memory	Specify the model merge and compare optimization mode.
Do Not Detect Order Changes for	-	multi-selection	Specify properties/tags for which order changes should not be detected.
Automatically Resolve Conflicts by Choosing	Target	Target Source	Specify the default resolution to resolve conflicts during project merge automatically.
Detect Changes in Diagrams	Direct Changes	Direct Changes All Changes	Select which changes to detect in diagrams.
Detect Changes in Diagrams from Used Projects in Teamwork Cloud	true	true/false	Set to false to stop the calculation of differences in diagrams from used projects in Teamwork Cloud. Skipping changes in diagrams from used projects may increase merge performance.
Navigation			
Default Action for Opening Diagram from Another Diagram	Open in the same tab	Open in the same tab Open in the new tab	Set the default behavior for opening one diagram from another diagram.

Default Action for Opening Diagram from Model	Open in the new tab	Open in the new tab Open in the same tab	Set the default behavior for opening a diagram from the Containment tree and menu actions.
Save/Load			
Create Backup File	true	true/false	Set value to true to create backup files for the project. Backup files will be saved as <project_name>.xml.bak or <project_name.xml>.zip.bak.
Save Project Recovery Data on Idle	true	true/false	Set to true to enable creating the recovery file for an opened project when the application is not used.
Idle Time to Activate Recovery Save	5	Real	Specify the period (in minutes) of waiting until the project recovery information saving is activated.
Open Last Project on Startup	false	true/false	Set to true to load the last opened project automatically when the application is started.
Time Limit to Load Table Completely	5	Real	Set a time limit (in seconds) to load the table completely. If the time is exceeded, the table is partially loaded.
Save Rich XML	false	true/false	Set to true to store default metaproperty values when saving the project.
XML Version	1.0		Choose XML version to be used when saving project files.
Save UUID	false	true/false	Set to true to add the "xmi:uuid" attribute for each model element in the XML file.
Check Dependencies on Package Export/Sharing	Allow dependencies	Do not check Allow dependencies Do not allow dependencies	Specify the dependency checking mode during the project export or package share.
Blank Project Template	<install.root>\templates\template.mdzip	Custom	Specify the location and name of the default project template.
Global Path to Used Projects	-	Custom	Specify global paths to the used projects. The project-specific paths can be defined for each project in the 'Project Options' dialog (select Options Project).
Check Changes in the Numbering Scheme	true	true/false	Set to true to check changes in the numbering scheme. The numbering scheme will be checked by validation rules.
Specifications			
Strip Multiline Text	false	true/false	Set to true to strip multiline text in the Specification window.
Specification Opening Mode	In the same window	In the same window In a new window	Specify the Specification window opening mode (in the same window or in a new one).
Recent Specifications List Size	10	1-20	Specify the list size for element specifications. The possible range is 1 to 20.
Specifications History Size	5	1-20	Specify the history size for an opened element specification.
Usage Analytics			
Share Analytics Information	true	true/false	Select to share anonymous analytics information and usage data automatically to help us improve the quality and performance of MagicDraw. The usage analytics data includes hardware and software specifications.
Diagram			
Editing			
Use Smart Path Layout	true	true/false	Set to true to automatically set breakpoints when modeling paths.
Use Smart Path Layout On Shape Move	true	true/false	Set to true to automatically set breakpoints for paths when moving shapes around.
Auto-insert Nested Activations in Sequence Diagrams	false	true/false	Set to true to automatically create nested activation for the message in the sequence diagram.
Edit Name with Stereotypes	true	true/false	Set to true to edit the stereotype name together with the element name in diagrams.
Optimize Paths	true	true/false	Set to true to optimize the paths when a part of the path is moved in various directions; this option removes loops from the path.
Display Paths on Element Drop	true	true/false	Display paths between symbols after dragging them from the Model Browser to the diagram pane.

Insert Element	Ask where to insert	Before path After path Do not insert Ask where to insert	Specify the mode of splitting the path into two paths by drawing a symbol on it. This option is valid only for the paths in the State Machine and Activity diagrams.
Join Control Flows	Ask to join control flows	Yes No Ask to join control flows	Set to true to join incoming/outgoing control flows after an action is removed.
Set Preferred Size After Hiding Compartment	If no connected paths	Always Never If no connected paths	Specify if the shape size should be set to the preferred size after one of the shape's compartments is suppressed in the diagram.
Display			
Text Antialiasing	true	true/false	Set to true to smooth the jagged edges of text.
Graphics Antialiasing	true	true/false	Set to true to smooth the jagged edges of graphics.
Show Centerlines in Flow Diagrams	true	true/false	Set to true to display the centerline in the flow diagrams. The centerline allows aligning the symbols in one line.
Grid Style	Sparse	Dense Sparse	Specify the style of the grid which is used in the diagram pane.
Symbols Manipulation			
Show Manipulation Highlighting	true	true/false	Set to true to highlight the errors in the modeling process. This helps to see the errors in the model at drawing time.
Group Selection Mode	Partial coverage	Partial coverage Complete coverage	Specify what symbols are selected by rectangular selection - completely or partially covered by selection rectangular. Press CTRL to invert mode temporarily.
Mark Selected Labels	true	true/false	Set to true to mark the path labels after a path is selected.
Zoom			
Zoom Step Size	0.2	0.1-1.0	Specify the zooming step for diagrams. The step value should be in the range from 0.1 to 1.0. The value 0.1 is equal to the 10% zoom ratio.
Center on the Mouse Location When Zooming	true	true/false	Set to true to center zooming according to mouse arrow.
Smart Manipulators			
Show Smart Manipulators	true	true/false	Set to true to display the smart manipulators for symbols.
Mouse's Left Button Action	Create element	Create element Make a breakpoint	Specify the mouse's left button action. The mouse's left button can be specified to create a new element or make a breakpoint.
Smart Manipulator Fade Time on Mouse Over (seconds)	1	Real	Specify the fade time in seconds for the smart manipulators.
Smart Manipulator Appearance Mode	Mouse over	Smart Manipulator Shift	Specify the appearance mode of the smart manipulators. If the mouseover mode is specified, it means that a smart manipulator is displayed after the mouse is over the symbol. If the Shift mode is specified, it means that smart manipulators appear after the symbol is selected and the Shift key is pressed.
Toolbar			
Show Names in Toolbar	true	true/false	Set to true to display the element names in toolbars near element icons.
Toolbar Position	Left	Left Right	Specify the toolbar position in the workspace. The toolbar can be located on the right or left side of the diagram pane.
Relation Map			
Inform about the Removal of Existing Elements when Changing a Context Element	true	true/false	Set to true to display the information message when elements already exist in the Relation Map and the context element changes.

Show Question Dialog when Restoring Layout	true	true/false	Set to true to display the question dialog, which asks to preserve or not manually suppressed/expanded branches and hidden elements when restoring the layout.
Preserve Manually Suppressed /Expanded Branches and Hidden Elements	true	true/false	Set to true to preserve manually suppressed/expanded branches and hidden elements when restoring layout.
Browser			
General			
Browser Position	Left	Left Right	Specify the browser position in the workspace. The browser can be located on the right or left side of the diagram.
Show Full Types	true	true/false	Select to show the qualified name for the element type.
Show Auxiliary Resources	false	true/false	Select to show elements with the applied <<auxiliaryResources>> stereotype.
As Whether to Show Auxiliary Resources	true	true/false	Select for a prompt to show auxiliary resources when projects are not visible in the Model Browser.
Sort Alphabetically	true	true/false	Select to sort the added model elements alphabetically in the Model Browser.
Show Applied Stereotypes	false	true/false	Select to show the applied stereotypes next to the element name.
Show Changes	true	true/false	Select to highlight the edited or added model elements and diagrams in the Model Browser.
Show Hyperlinks	true	true/false	Select to display the hyperlinks which are added to the model elements.
Diagrams Tree			
Group by Diagram Name	false	true/false	Select to group by diagram name.
Inheritance Tree			
Invert Tree	false	true/false	Select to invert the tree to show the child element at the top of the hierarchy.
Search Results			
Group By	Element Type	Element Type No Grouping	Choose the search result grouping criterion.
Model Extensions Tree			
Group by Profiles	true	true/false	Select to group by profiles.
Group by Metaclasses	true	true/false	Select to group by metaclasses.
Structure Browser			
Show Inherited Structure	true	true/false	Select to show properties inherited from the general classifiers.
Nest Satisfied Requirements	true	true/false	Select to nest requirements within the satisfying elements.
Composition Inspection			
General			
Removal of the package share confirmation	true	true/false	Set to true to ask for confirmation when a shared package is removed from a used project.
Removal of shared package element confirmation	true	true/false	Set to true to ask for confirmation when an element is removed from a shared package of a used project.
Element moved outside shared package confirmation	true	true/false	Set to true to ask for confirmation when an element is moved outside the shared package in a used project.
Element moved between used projects confirmation	true	true/false	Set to true to ask for confirmation when an element is moved from one used project to another.
Collaboration			
General			
Auto Login to Server	false	true/false	Set to true to enable the automatic logging in to the server upon starting the application.
Show Project Versions Conflict Warning	true	true/false	Set to true to display a warning message when two projects have the same usages.
Include Project Version Information to Element URL	Ask User	Ask User	Specify the mode of the project version information usage in the element URL.
Remember User Name Between Sessions	true	true/false	Select to remember the last entered user name in the login dialog.
Remember Server Between Sessions	true	true/false	Select to remember all server names to which a successful connection was established.

Server Name	localhost	localhost	specify the name of the server. the name is automatically set once you have logged in to the server.
Single Sign On Server Name	localhost	localhost	Specify the name of the Single Sign On server. The name is automatically set once you have logged in to the server.
Use Secured Connection (SSL)	false	true/false	Set to true to use a secured connection (SSL) while working with the server.
Auto-Commit After Project is Migrated to New Version	true	true/false	Set to true to allow the application to auto-commit a project to the server after the project is migrated due to new Standard/System profiles or new model extensions.
SSO Authentication as Default	false	true/false	Set to true to set Singl Sign On authentication as a default method. If the value is set to false, the basic username/password authentication is set as default.
Notify About New Project Versions on the Server	true	true/false	Set to true to get a notification when a server project is modified on the server by other users.
Notify About Newer Project Usages	Open	Open Open, Update Never	Specify commands when the notifications about newer project usages should be shown.
Interval to Check For New Project Version (in seconds)	120	30 45 60 90 120	Specify how often to check for a new project version on the server (in seconds).
Enable Locking Without Forced Project Update	true	true/false	Lock elements without updating the project when possible.
Support Mount Points of Usages on Server	true	true/false	Create Mount Relationships to connect former mount point packages to the former mounted elements when importing projects to the server.
Web Application Platform URL	-	Custom	Specify the Web Application Platform URL (for example, https://example.com:8443). It is used to quickly access Teamwork Cloud web apps from within the modeling tool.
Representation of Users	User Name	User Name Full Name Email	Select the field to represent the users. If the selected field is left empty, the User Name is shown by default.
CATIA Systems Synthesis Analysis			
Publish MDZipX Upon Commit	false	true/false	Select to publish the MDZipX file to Teamwork Cloud upon project commit.
Publish Diagrams from Used Projects	false	true/false	Select to include diagrams from used projects in MDZipX file.
Floating			
General			
FLEXNet License Server Name	localhost	Custom	Specify the name of the FLEXNet license server.
FLEXNet License Server Port	1101	Custom	Specify the port number of the FLEXNet license server.
Auto Login to FLEXNet License Server	false	true/false	Set to true to enable the automatic logging into the FLEXNet license server upon starting the application.
Borrowing Period (hours)	24	Real	Specify the period in time (in hours) for borrowing licenses from the server and using them offline.
Ask if Run MagicDraw Without Unavailable Plugins	true	true/false	Set to true to display the question message f user wants to run the application without an unavailable plugin. An unavailable plugin is the one whose license is not available in the FLEXNet license server.
Network			
HTTP Proxy			
Use HTTP Proxy Server	false	true/false	Set to true to use the HTTP proxy server when the application is checking for updates.
HTTP Proxy Server Address	-	Custom	Specify the name or IP address of the HTTP proxy server.
HTTP Proxy Server Port	8080	Custom	Specify the port of the HTTP proxy server. The default port is 8080.
HTTP Proxy Server User	-	Custom	Specify the name of the HTTP proxy server user.
Authenticate HTTP Proxy Server	false	true/false	Set to true to authenticate with the HTTP proxy server.
General			
Timeout (seconds, 0 - infinite)	30	Real	Specify the waiting period (in seconds) before canceling a connection prompt.
Keyboard			
Assign new, edit, or remove shortcut keys for the main menu, shortcut menu items, and main and diagram element toolbars.			

Plugins			
Review detailed information about all installed plugins.			
Resources			
Review and configure external resources that are used during project load.			
Path Variables			
Paths variable is a path used in the code engineering process, project usages, hyperlinks, etc. Specify predefined or create and configure custom variables for referencing to file system objects.			
Spelling			
Spelling			
Check Spelling As You Type	true	true/false	Set to true to underline incorrectly spelled words and provide the suggestion list of possible corrections in the context menu.
Check Tagged Values	true	true/false	Set to true to check all tagged values that are of string type.
Dictionary	English	English French Russian German Thai Spanish	Select the language for spelling. All languages supported by the "Open Office" can be additionally added to the existing list of supported languages (Environment Options Spelling Add Spelling Dictionaries).
Case Sensitive	false	true/false	Set to true to differentiate the words in meaning based on differing use of uppercase and lowercase letters.
Use Camel Case Words	true	true/false	Set to true to spell the compound words or phrases in which the words are joined without spaces and are capitalized within the compound - as in BlackColor, as separated words.
Ignore Upper Case Words	false	true/false	Set to true to not check the spelling of the words with all uppercase letters.
Skip Numbers	true	true/false	Set to true to not check the spelling of the words with all uppercase letters.
Launchers			
Launchers show which programs will be used for opening different file types in the application. Add new, edit, or remove launchers and specify their properties (file extension, program path or name, program arguments).			
Experience			
General			
Main Menu Expert Mode	false	true/false	Set to true to show complete command lists in the main menu. Otherwise, command lists will not be complete, and arrows for expanding menus will be visible at the very end of each menu command list.
Context Menu Expert Mode	false	true/false	Set to true to show complete command lists in the context menu. Otherwise, command lists will not be complete, and arrows for expanding menus will be visible at the very end of each menu command list.
Main Toolbar Expert Mode	false	true/false	Set to true to show complete command lists in the main toolbar. Otherwise, command lists will not be complete, and arrows for expanding the toolbar will be visible at the very end of each toolbar command list.
Diagram Main Toolbar Expert Mode	false	true/false	Set to true to show complete command lists in the diagram main toolbar. Otherwise, command lists will not be complete, and arrows for expanding the diagram main toolbar will be visible at the very end of each diagram main toolbar command list.
Diagram Elements Toolbar Expert Mode	false	true/false	Set to true to show complete command lists in the diagram element toolbar. Otherwise, command lists will not be complete, and arrows for expanding the diagram element toolbar will be visible at the very end of each diagram element toolbar command list.
Element Properties Mode	Standard	Standard Expert All	Specify the mode of displaying properties in the element specification dialog.
Symbol Properties Mode	Standard	Standard Expert All	Specify the mode of displaying properties in the symbol properties dialog.
Smart Manipulator Expert Mode	false	true/false	Set to true to show complete command lists in the smart manipulators. Otherwise, command lists will not be complete, and arrows for expanding smart manipulators will be visible at the very end of each smart manipulator command list.
External Tools			
Specify external tools to be launched from the application. This allows to easily pass modeling artifacts to 3rd party tools, thus facilitating model transformations, code generation, etc.			

Notifications			
General			
Notification Display Time (seconds)	10	Real	Specify the notification display time in seconds.
Severity			
Error	RGB [255, 0, 0]	Custom	Change the color of the Error text in the Notification window.
Warning	RGB [0, 0, 0]	Custom	Change the color of the Warning text in the Notification window.
Information	RGB [0, 0, 0]	Custom	Change the color of the Information text in the Notification window.
Minimal Severity Level	Information	Information Warning Error	Specify the minimum severity level. Notification messages of both the specified and higher severity levels will be displayed in the Notification window. The lowest severity level is Information. The highest severity level is Error.
History			
Retain History (days)	30	Real	Specify the number of days for how long notification messages should be kept in history.
Server Certificates			
Trusted by All Users			
Manage server certificates trusted by all users in this application on this machine. Add, remove, or view details of the selected trusted server certificate. You may need system administrator rights to manage these certificates.			
Trusted by Current User			
Manage server certificates trusted by the current user in this application on this machine. Add, remove, or view details of the selected trusted server certificate.			
Code Engineering			
General			
Show Code Engineering Sets	true	true/false	Select to show the code engineering set items in the Model Browser.
Eclipse UML2 XMI			
Eclipse UML2 (v2.x) XMI			
Export			
Export Model to Eclipse UML2 XMI on Project Save	Do not respond	Do not respond Ask before export Always export	Select the mode of the application model export on project save action. The model will be exported without diagrams.
Ask to Overwrite Exported Files	true	true/false	Set to true to display a message requesting confirmation to overwrite previously exported files.
Show Stereotype Property Type Change Warning	true	true/false	Set to true to display warning message warnings when exporting a model to the Eclipse UML2 XMI file after the stereotype property type has been changed.
Show 'Stereotypes from the Same Profile' Warning	true	true/false	Set to true to display a warning message that the stereotype will not be applied to the element if this element is in the same profile with the stereotype.
Apply All Profiles to Root Model	true	true/false	Set to true to apply all the exported profiles to the root model. Otherwise, all the exported profiles will be applied to the nearest nesting package.
Move Stereotype to Nesting Profile	true	true/false	Set to true to move not a directly contained stereotype to a nesting profile.
Change Stereotype Property Type Stereotype	Do not change	Do not change Single extended metaclass only Common super of extended classes	Specify the mode of changing the stereotype's property type's stereotype on model export.
Change not eCore Datatype to String	true	true/false	Set to true to change the stereotype's property type to String on export if the type is not eCore data type.
Import/Export			

Preserve IDs on	Import /Export	Do not preserve Export Import Import /Export	Specify when the element ID should be preserved.
Show Element Mapping Warning	true	true/false	Set to true to display the warning message showing the elements' (metaclasses and data types) mappings between the application and Eclipse UML2. A warning message will appear when exporting or importing a model.
Display Warning in message Window	true	true/false	Set to true display project exporting warning in the Message Window.
Import			
Use Stereotype Keyword as name	true	true/false	Set to true to use keywords as names for the stereotypes when importing a model from the Eclipse UML2.
Eclipse UML2 (v3.x) XMI			
Export			
Export Model to Eclipse UML2 XMI on Project Save	Do not respond	Do not respond Ask before export Always export	Select the mode of the application model export on project save action. The model will be exported without diagrams.
Ask to Overwrite Exported Files	true	true/false	Set to true to display a message requesting confirmation to overwrite previously exported files.
Show Stereotype Property Type Change Warning	true	true/false	Set to true to display warning message warnings when exporting a model to the Eclipse UML2 XMI file after the stereotype property type has been changed.
Show 'Stereotypes from the Same Profile' Warning	true	true/false	Set to true to display a warning message that the stereotype will not be applied to the element if this element is in the same profile with the stereotype.
Apply All Profiles to Root Model	true	true/false	Set to true to apply all the exported profiles to the root model. Otherwise, all the exported profiles will be applied to the nearest nesting package.
Move Stereotype to Nesting Profile	true	true/false	Set to true to move not a directly contained stereotype to a nesting profile.
Change Stereotype Property Type Stereotype	Do not change	Do not change Single extended metaclass only Common super of extended classes	Specify the mode of changing the stereotype's property type's stereotype on model export.
Change not eCore Datatype to String	true	true/false	Set to true to change the stereotype's property type to String on export if the type is not eCore data type.
Import/Export			
Preserve IDs on	Import /Export	Do not preserve Export Import Import /Export	Specify when the element ID should be preserved.
Show Element Mapping Warning	true	true/false	Set to true to display the warning message showing the elements' (metaclasses and data types) mappings between the application and Eclipse UML2. A warning message will appear when exporting or importing a model.
Display Warning in message Window	true	true/false	Set to true display project exporting warning in the Message Window.
Import			
Use Stereotype Keyword as name	true	true/false	Set to true to use keywords as names for the stereotypes when importing a model from the Eclipse UML2.
Eclipse UML2 (v4.x) XMI			

Export			
Export Model to Eclipse UML2 XMI on Project Save	Do not respond	Do not respond Ask before export Always export	Select the mode of the application model export on project save action. The model will be exported without diagrams.
Ask to Overwrite Exported Files	true	true/false	Set to true to display a message requesting confirmation to overwrite previously exported files.
Show Stereotype Property Type Change Warning	true	true/false	Set to true to display warning message warnings when exporting a model to the Eclipse UML2 XMI file after the stereotype property type has been changed.
Show 'Stereotypes from the Same Profile' Warning	true	true/false	Set to true to display a warning message that the stereotype will not be applied to the element if this element is in the same profile with the stereotype.
Apply All Profiles to Root Model	true	true/false	Set to true to apply all the exported profiles to the root model. Otherwise, all the exported profiles will be applied to the nearest nesting package.
Import/Export			
Preserve IDs on	Import /Export	Do not preserve Export Import Import /Export	Specify when the element ID should be preserved.
Show Element Mapping Warning	true	true/false	Set to true to display the warning message showing the elements' (metaclasses and data types) mappings between the application and Eclipse UML2. A warning message will appear when exporting or importing a model.
Display Warning in message Window	true	true/false	Set to true display project exporting warning in the Message Window.
Import			
Use Stereotype Keyword as name	true	true/false	Set to true to use keywords as names for the stereotypes when importing a model from the Eclipse UML2.
Eclipse UML2 (v5.x) XMI			
Export			
Export Model to Eclipse UML2 XMI on Project Save	Do not respond	Do not respond Ask before export Always export	Select the mode of the application model export on project save action. The model will be exported without diagrams.
Ask to Overwrite Exported Files	true	true/false	Set to true to display a message requesting confirmation to overwrite previously exported files.
Show Stereotype Property Type Change Warning	true	true/false	Set to true to display warning message warnings when exporting a model to the Eclipse UML2 XMI file after the stereotype property type has been changed.
Show 'Stereotypes from the Same Profile' Warning	true	true/false	Set to true to display a warning message that the stereotype will not be applied to the element if this element is in the same profile with the stereotype.
Apply All Profiles to Root Model	true	true/false	Set to true to apply all the exported profiles to the root model. Otherwise, all the exported profiles will be applied to the nearest nesting package.
Import/Export			
Preserve IDs on	Import /Export	Do not preserve Export Import Import /Export	Specify when the element ID should be preserved.
Show Element Mapping Warning	true	true/false	Set to true to display the warning message showing the elements' (metaclasses and data types) mappings between the application and Eclipse UML2. A warning message will appear when exporting or importing a model.
Display Warning in message Window	true	true/false	Set to true display project exporting warning in the Message Window.
Import			

Use Stereotype Keyword as name	true	true/false	Set to true to use keywords as names for the stereotypes when importing a model from the Eclipse UML2.
Enterprise Architect Import			
General			
Switch aggregation side (Recommended for XMI exported from EA 7.1)	false	true/false	Set to true to switch aggregation side. this option is recommended if the XMI is exported from EA 7.1.
Exclude EA specific data	false	true/false	Set to true if EA-specific data is not required to be imported.
Generate conversion log	true	true/false	Set to true to generate a conversion log file.
Open project after conversion	false	true/false	Set to true to open the project after finishing import.
Activity element mapping			
Convert EA WriteVariable Action to	AddVariableValueAction	AddVariableValueAction RemoveVariableValueAction	Select the element type that you want to convert WriteVariable Action to.
Convert EA WriteLinkAction to	CreateLinkAction	CreateLinkAction DestroyLinkAction	Select the element type that you want to convert WriteLinkAction to.
Convert EA WriteStructuralFeatureAction to	AddStructuralFeatureValueAction	AddStructuralFeatureValueAction RemoveStructuralFeatureValueAction	Select the element type that you want to convert EA WriteStructuralFeatureAction to.
Macros			
General			
Default Macro Language	Groovy	Groovy (recommended) JavaScript Rhino Jython JavaScript Nashorn (deprecated) Beanshell	Set the default macro language. To ensure the best performance experience, it is strongly suggested that you use the recommended language.
Report Wizard			
Change various Report Wizard options and configurations.			