

Assigning Operations to Messages

You can assign [Operations](#) only to Call (synchronous and asynchronous) Messages. Only one Operation can be assigned to a Message.

To assign an Operation to a Message

- Assign an Operation to a Message in the Message [Specification window](#):
 1. Draw a call Message between two [Lifelines](#) or select an existing Message on a diagram pane.
 2. Open the Message Specification window.
 3. Click the **Signature (operation)** property value cell and then select an Operation in the drop-down list.



- If the **Signature (operation)** drop-down list is empty, check if the Lifeline the current Message is drawn to has a type assigned, and if this type has a specified Operation.
- In the **Signature (operation)** drop-down list, both Operations and signals of your project are listed. Make sure you have selected an Operation. If you assign a signal to a call Message, the Message will automatically be converted to a send Message.

- Type an Operation name right on the Message on the diagram pane.
- On the diagram, right-click the Message and on the shortcut menu, click **Operation**. Then click to select the Operation that you want to apply on the element, or click the **Create Operation** button.

If an Operation you are assigning to a Message has default parameter values, these default parameter values are assigned to the Message arguments. However, if the types of the Operation parameter and the Message argument do not match, the default parameter value is assigned to the Message argument.



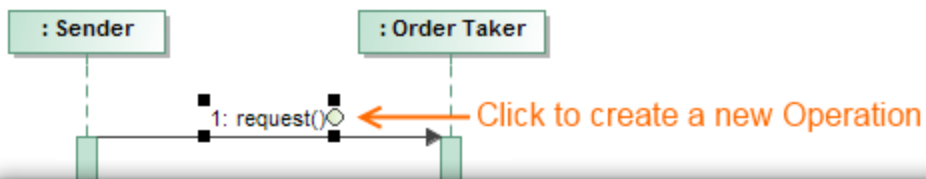
Names of operation parameters are displayed in message signature by default. However, you can change this behavior by opening the **Symbol Properties** dialog (right-click a Message and select **Symbol Properties**) and setting the **Show Attribute/Parameter Names** property to **true** to display them or **false** to hide them.

To create a new Operation for a Message



You can create a new Operation only if the Lifeline the Message is drawn to has a type assigned.

1. Draw a Call Message between two Lifelines or select an existing Message on a diagram pane.
2. Do one of the following:
 - Click the **Create New Operation According to This Message** button (a small green circle at the end of the Message name) and define the Operation property values in the Operation Specification window.
 - On the Message shortcut menu, click **Operation** and then click the **Create Operation** button. Select the owner and click **OK**. In the Operation Specification window, define the Operation and click **Close**.
 - Type an Operation name right on a Message on the diagram.



Specification of Operation request

Specification of Operation properties
Specify properties of the selected Operation in the properties specification table. Choose the Expert or All options from the Properties drop-down list to see more properties.

request

Properties: Standard

Operation	
Name	request
Owner	Order Taker [Order Ticket]
Applied Stereotype	
Visibility	public
Type	
Method	
Is Abstract	<input type="checkbox"/> false
Is Static	<input type="checkbox"/> false
To Do	

Name
The name of the NamedElement.

Q Type here to filter properties

Close Back Forward Help