

InterfaceRequirement satisfied by an invalid element

Abbreviation

interfaceRequirement[1]

Description

This rule checks if Interface Requirement is satisfied by a port, Connector, Item Flow, and/or Constraint Property.

Severity

warning

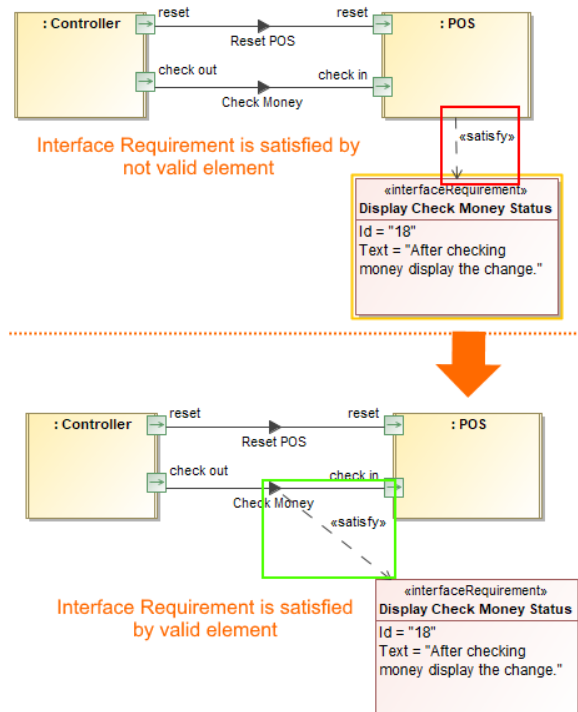
Constrained Element

Interface Requirement

Solvers

- **Remove invalid Satisfy relationship(s)** - deletes not valid Satisfy relationship from the model.

Example



The *Display Check Money Status* Interface Requirement is satisfied by *Check Money* Item Flow.