

Invalid ends type compatibility

Abbreviation

BindingConnector[1]

Description

This validation rule checks if the two ends of a Binding Connector must have either the same type or types that are compatible so that equality of their values can be defined.

Severity

warning

Constrained Element

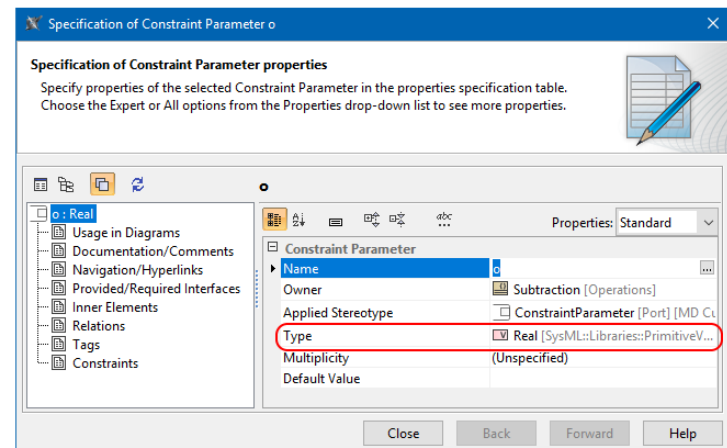
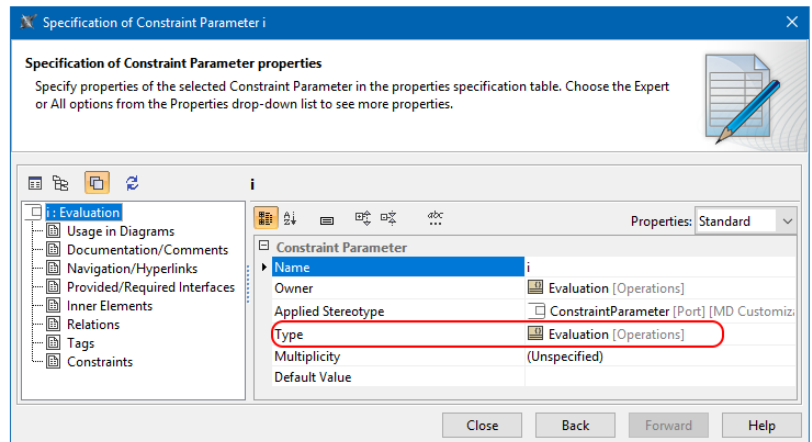
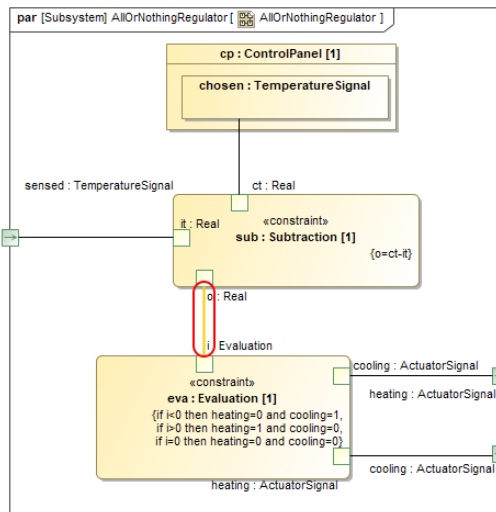
Connector

Solvers

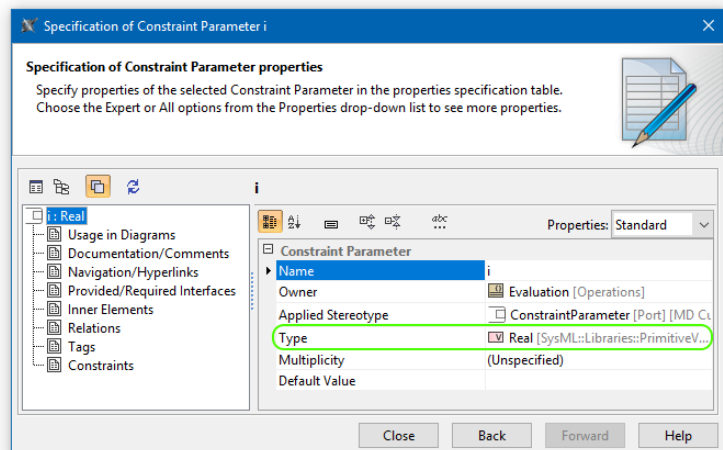
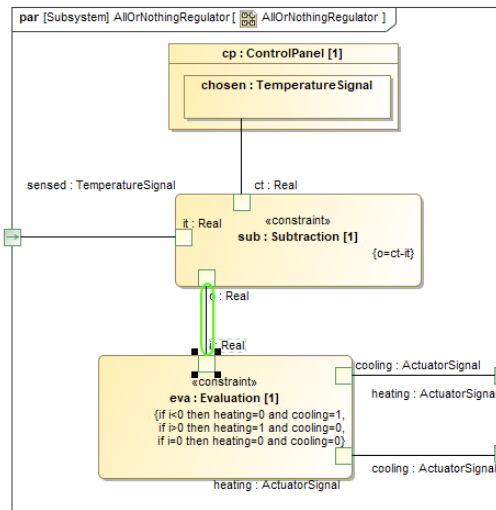
- **Convert types of Binding Connector ends to be type of <parameter name>** - specifies the same type for both ends of Binding Connector.

Example

Different types of Binding Connector ends



Same types of Binding Connector ends



The types of Parameters *o* and *i* are the same Value Property Real.