

Missing Block stereotype

Abbreviation

Block[8]

Description

This validation rule checks if a classifier which specializes a Block is also have the «Block» stereotype or one of its specializations applied.

Severity

info

Constrained Element

Class

Solvers

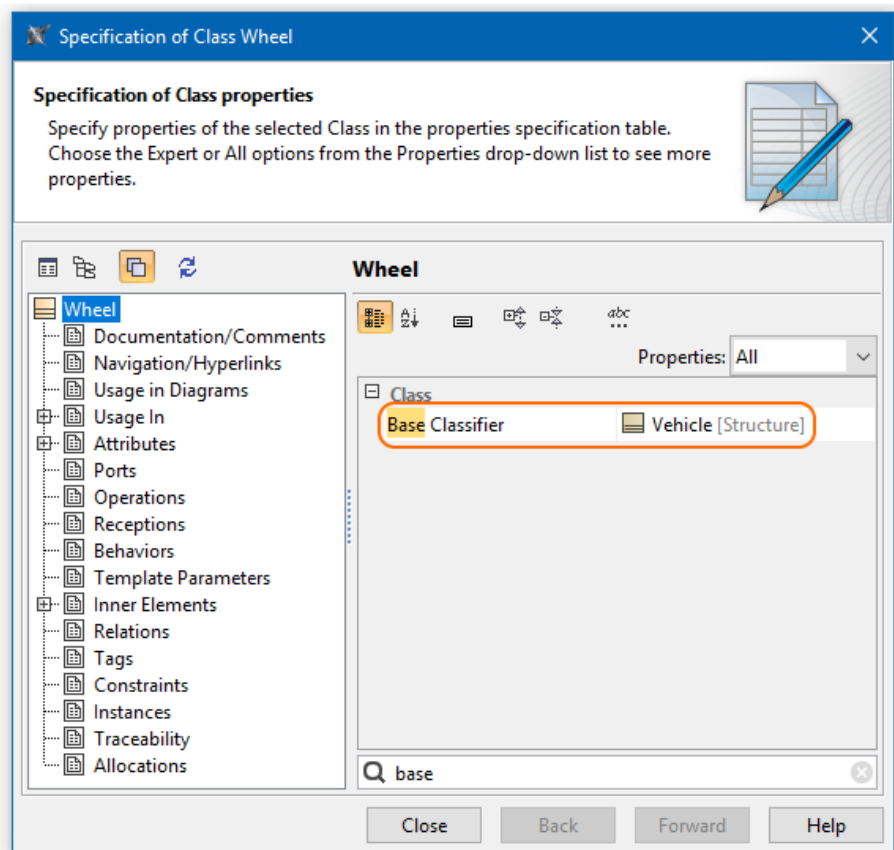
To fix this, do one of the following:

- Apply «Block» stereotype for an element which base classifier is stereotyped by a «Block».
- Open element's Specification window and in the **Base Classifier** property select any element except a Block or leave it empty.

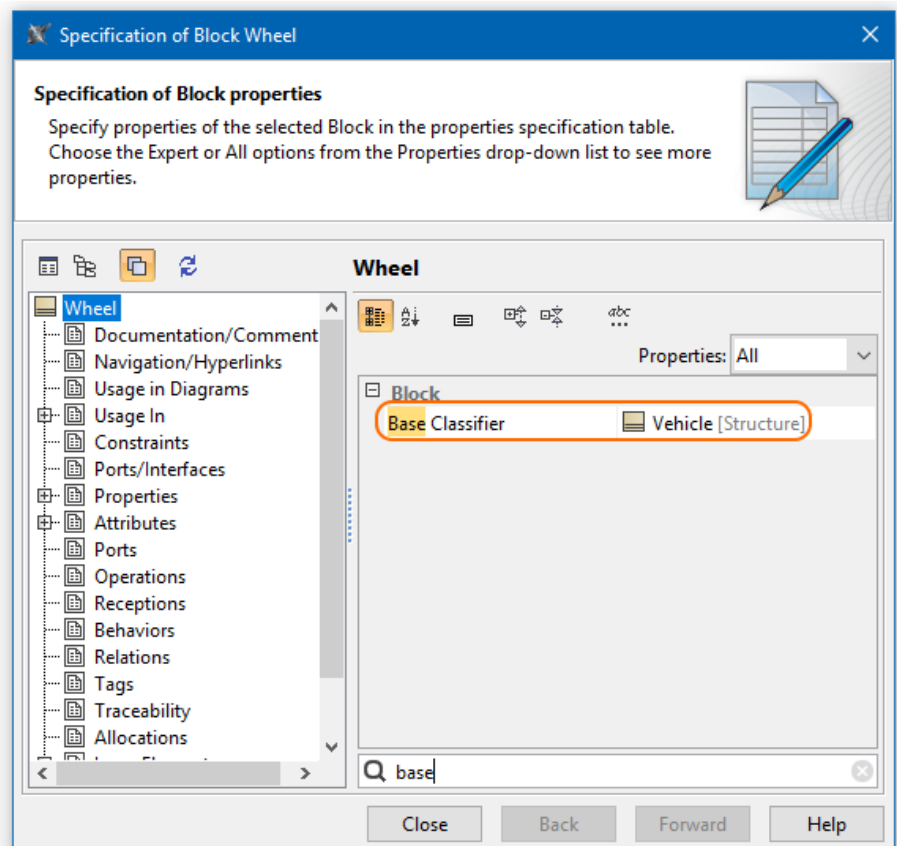
Example



Class



Block



The Block stereotype must be applied for a *Wheel* since its base classifier is stereotyped by a Block.

