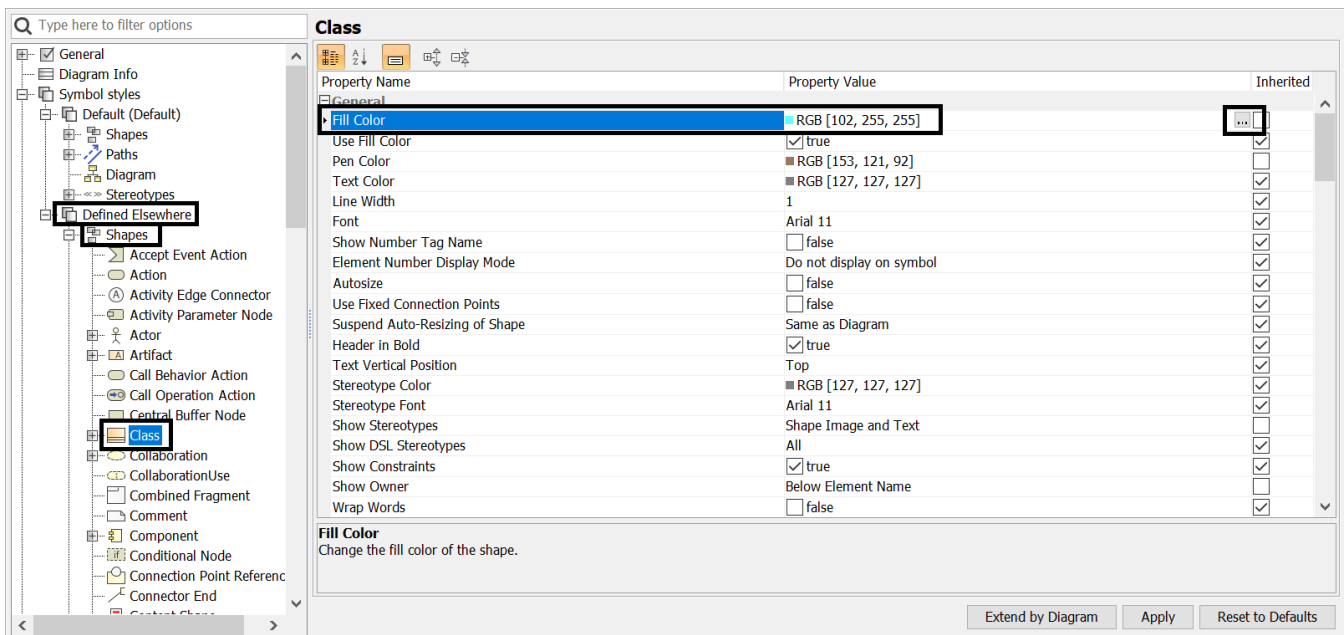


How to change the color of AutoStyler

This page shows you how to change the default fill-in color of AutoStyler. Please note that you can only change the color of classes that have already had the functions of **AutoStyler** applied to it. When you are done customizing the AutoStyler color make sure to follow the steps described in the **To automatically apply customizations** section. Color differentiation can be really important for highlighting different points as some colors can point to different ideas and thoughts than others.

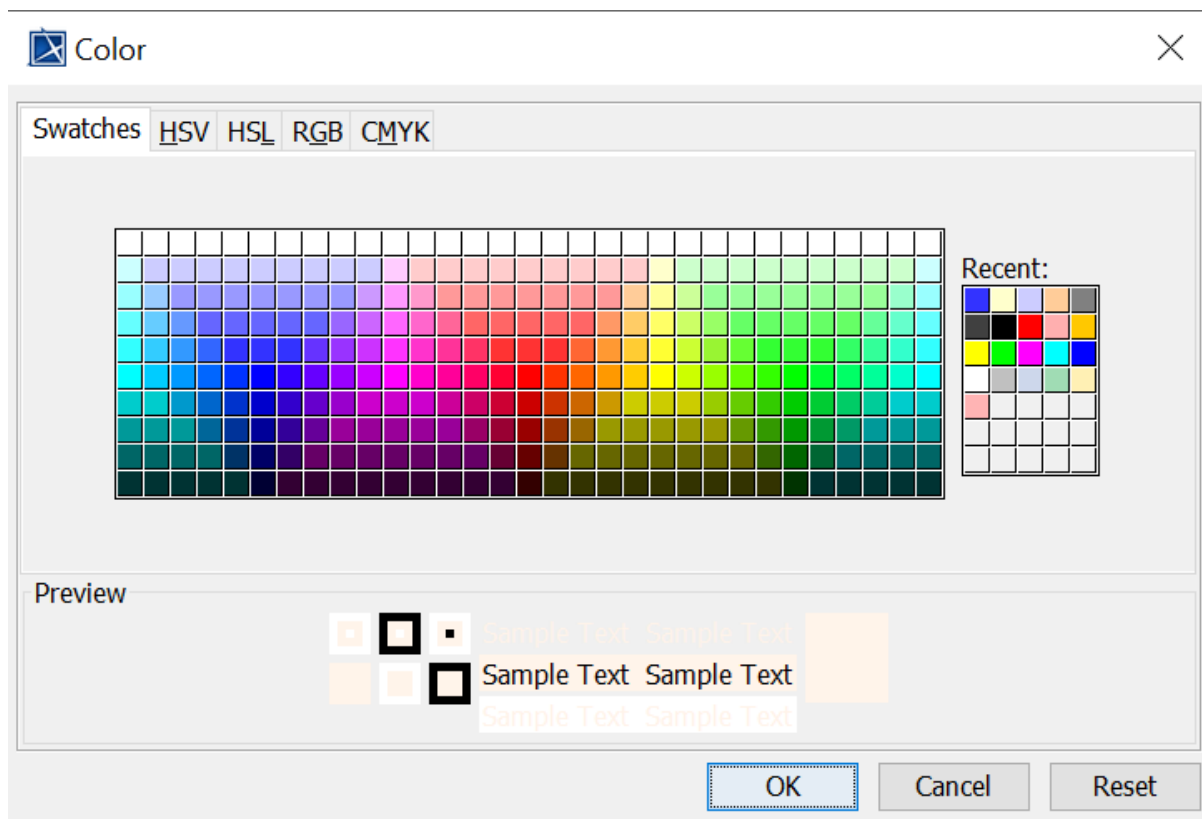
How to change the fill-in color of AutoStyler

1. Select **Options > Project**.
2. Select **Defined Elsewhere** and click on the little plus sign to the left.
3. Find **Shapes** and click on the little plus sign to the left.
4. Look for a folder named **Class** and click on it.
5. At the very top of **Class** left click on the Property Value of **Fill Color** to where it reveals the **three dots** to the right.



Steps 1-5

6. Click on those **three dots** and select a color from the color table.
7. After you have selected a color click **OK**.



Color Table

You can apply a more specific color if you know the HSV, HSL, RGB, or CMYK values to enter into the color table above.