

2022x Refresh1 Version News



Released on: November 18, 2022

The 2022x Refresh1 release introduces client-side performance improvements, general modeling, and collaborative modeling enhancements.

The 2022x Refresh1 release brings improvements to the Data Markings and Classification Plugin. The plugin is now enhanced with the ability to display Containment Markings, perform Sensitive Element Redaction model transformation, and add Data Markings recursively.

The client-side performance improvements include the Evaluate Operation Performance functionality that will help determine the reasons behind degraded tool performance caused by the execution of expressions. Additionally, the 2022x Refresh1 version provides a separate installation file for ARM architecture-based macOS (i.e., Apple M1) that allows the modeling tool to run up to 2-3 times faster than with the x86 build.

For general modeling, this release presents an improved error notification display, fully featured Structured Expressions dialogs without the separate Standard/Expert UI modes, a new 'UI Font' environment option for changing the default application font, and an ability to create custom project disclaimer configurations.

Additionally, collaborative modeling is now improved with an ability to show custom centralized announcements in the modeling tool informing users on planned server-wide or project-specific events.

Last but not least, the 2022x Refresh1 release introduces the initial PowerBy solution – an alternative collaborative modeling environment that is native to the 3DEXPERIENCE platform and provides an additional set of platform-specific capabilities such as advanced configuration management, traceability across disciplines, and others.

To download the latest version of the modeling tool, see [Downloading installation files](#). Don't forget to give us your feedback on [LinkedIn](#). For further information, check the [product documentation](#).

2022x Refresh1 Hot Fix 1 available

2022x Refresh1 Hot Fix 1 is now available for CATIA Magic and No Magic portfolios. It includes Collaboration Powered by the 3DEXPERIENCE Platform improvements, an improved launcher for MAC OS Ventura, and several bug fixes. [Learn more >>](#)

Data Markings and Classification Plugin

- [Display Containment Markings](#)
- [Sensitive Element Redaction](#)
- [Add Data Markings recursively](#)
- [New validation rules](#)

Client-side Performance Improvements

- [Evaluate Operation Performance](#)
- [Other Improvements](#)

Modeling and Infrastructure

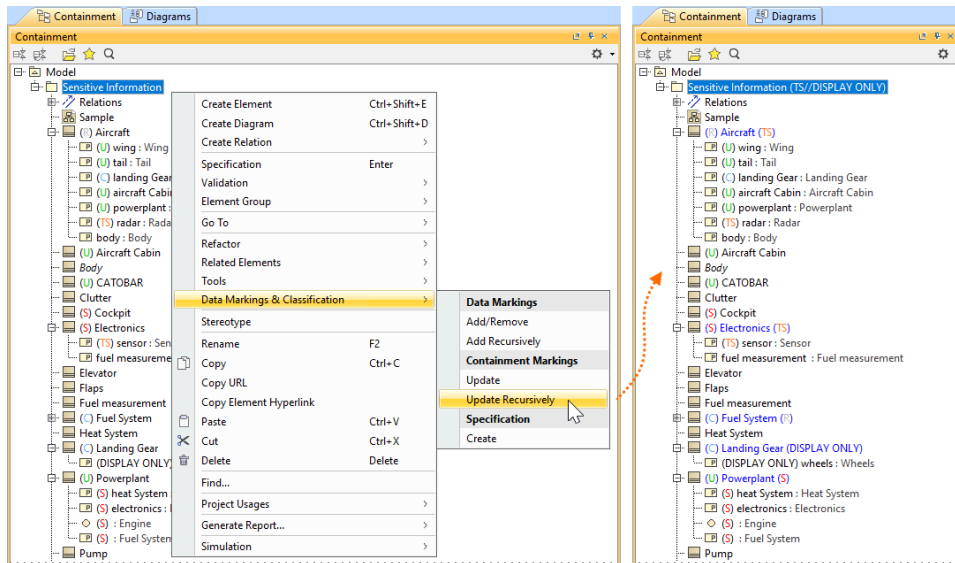
Collaboration

- [Teamwork Cloud Announcements](#)
- [Collaboration Powered by 3DEXPERIENCE Platform](#)

Data Markings and Classification Plugin Improvements

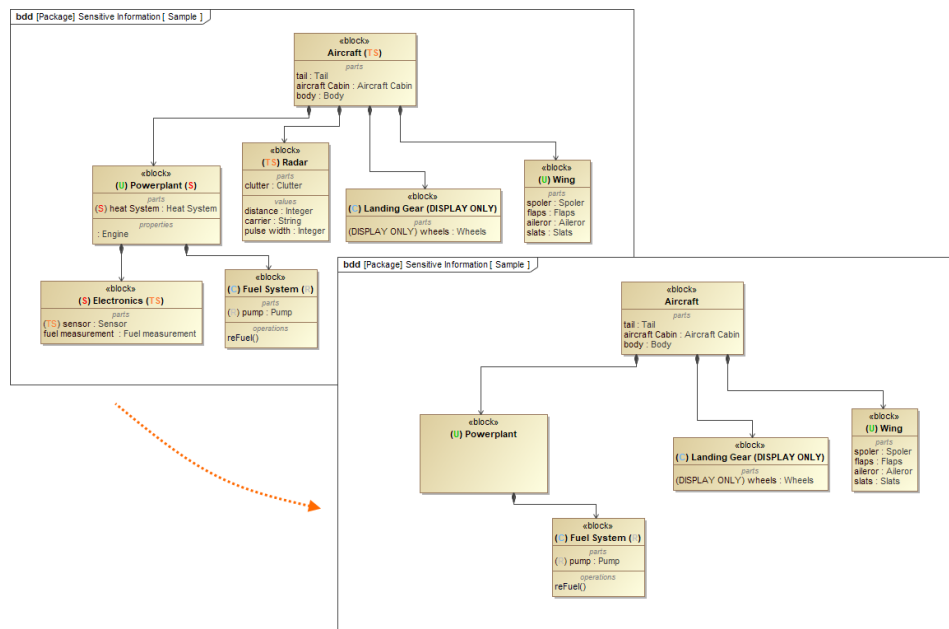
The 2022x Refresh1 version introduces new and improved functionality in the **Data Markings and Classification Plugin**, including:

- **Display Containment Markings.** You can now choose to have Containment Markings that are displayed on the owner element, indicating the owned elements' Data Markings. They are displayed in parentheses as postfixes next to the element name. Use the newly introduced **Element Types with Containment Markings** project option to specify which element types can have Containment Markings displayed on them. This feature allows you to quickly see the owned elements' Data Markings by simply glancing at the owner element. [Learn more about Containment Markings >>](#)



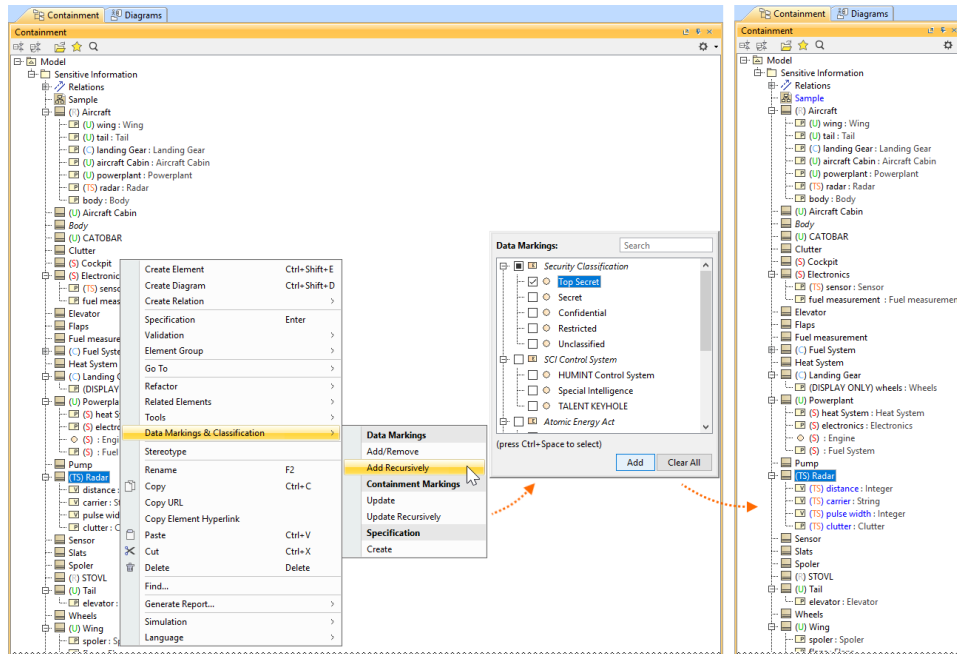
The Containment Markings are updated recursively for the package *Sensitive Information* and its contained elements.

- **Sensitive Element Redaction.** The **Sensitive Element Redaction** model transformation allows you to narrow down the full model by removing elements with the selected Data Markings. Controlling what elements should constitute the model based on their Data Markings allows you to provide a redacted model to suppliers who can only have access to some model elements. [Learn more about Sensitive Element Redaction >>](#)



A model transformed via Sensitive Element Redaction by removing elements with *Secret (S)* and *Top Secret (TS)* Data Markings.

- **Add Data Markings recursively.** From now on, in addition to adding Data Markings to individual elements, you can add them recursively to multiple project elements via the owner element. Use the newly introduced **Sensitive Element Types** project option to specify which element types can have Data Markings added to them recursively. This feature allows you to add Data Markings to multiple elements conveniently and efficiently. [Learn more about adding Data Markings recursively >>](#)



Adding Data Markings recursively to the Block *Radar* and its Value and Part Properties.

- **New validation rules.** The new features listed above are supported with additional validation rules.
 - The **Invalid Containment Markings** rule checks if the Containment Markings match the Data Markings of owned elements.
 - The **Missing Data Marking** checks if there are elements that are specified to have Data Markings in the Sensitive Element Types project option but do not have any Data Markings added.
 - When a property is typed by a sensitive element, the **Inconsistent Data Markings (Property)** validation rule checks whether the property has a matching Data Marking or if the sensitivity level of the added Data Marking is not lower than the sensitivity level of the Data Marking added to the type.

[Learn more about validation rules >>](#)

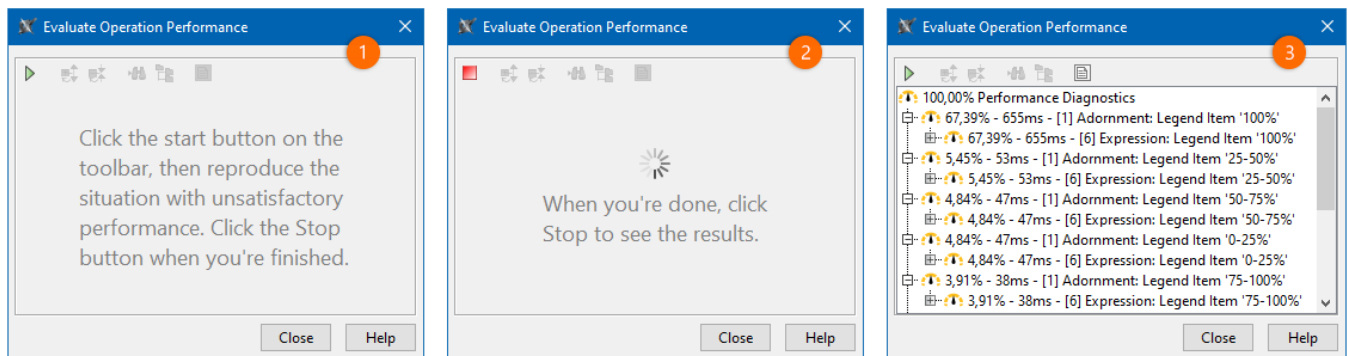
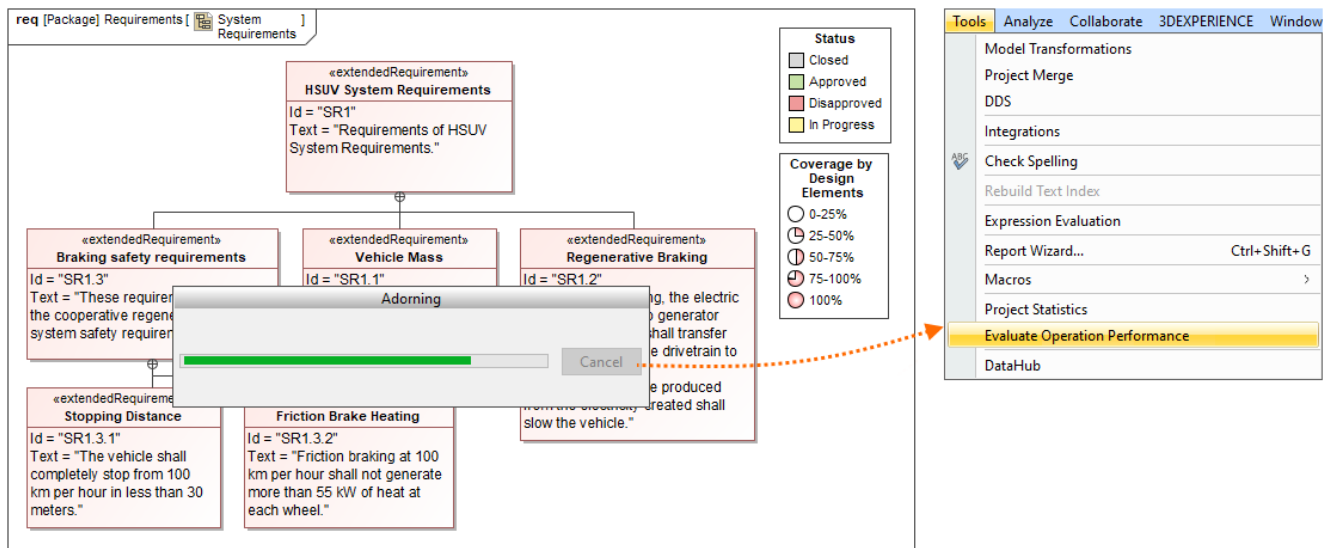
To learn more, watch the following video:

[Back to top](#)

Client-side Performance Improvements

Evaluate Operation Performance

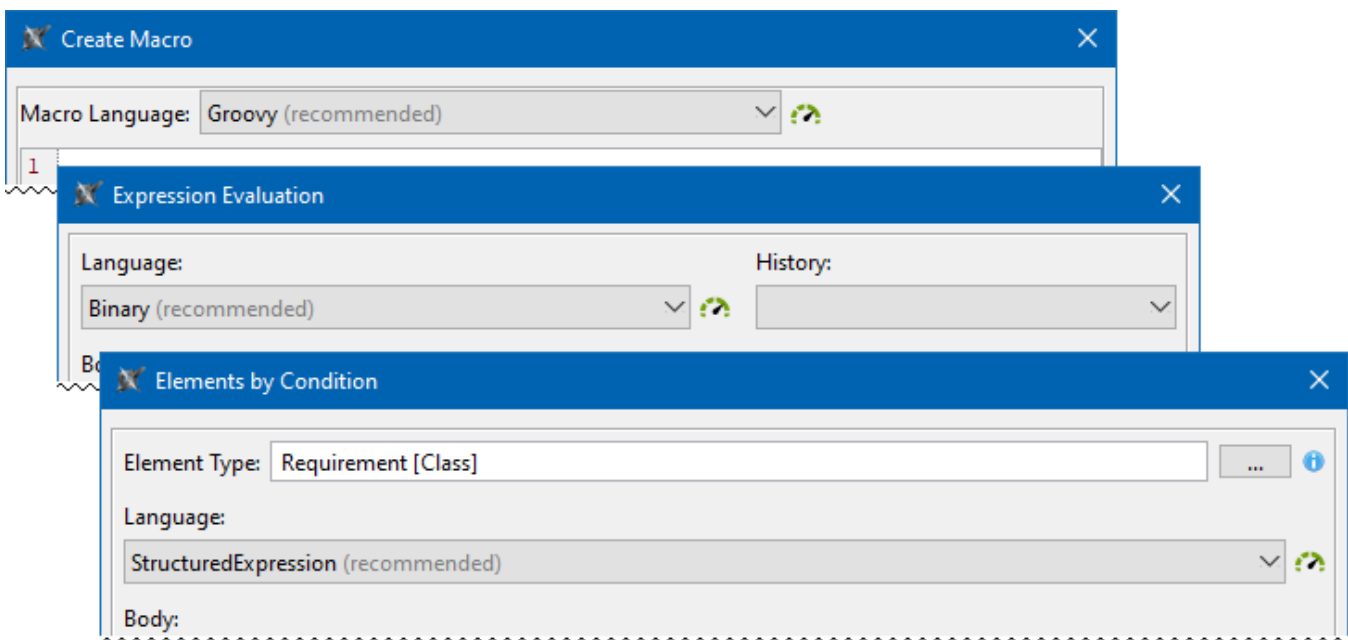
If you are tired of seeing progress bars while performing various operations in the tool, you can now use the Evaluate Operation Performance functionality, which allows you to view performance diagnostics that help determine the reasons behind degraded tool performance if it is caused by the execution of expressions (e.g., derived properties, smart packages, legends, validation rules) defined in the model. You can also analyze the building of matrixes and tables.



Adorning diagram symbols operation performance evaluation.

To learn more, watch the following video:

Additionally, you can now see the language recommendations based on their performance. The recommendations are visible via the 'recommended' indication and the performance indicator icon in the language selection menu. The icon color reflects the performance: green for fast (Binary, Structured Expression, Groovy), yellow for medium, and red for slow. It allows you to see the languages' performance when choosing one for your operations and make an informed decision.



[Learn more about operation performance evaluation >>](#)

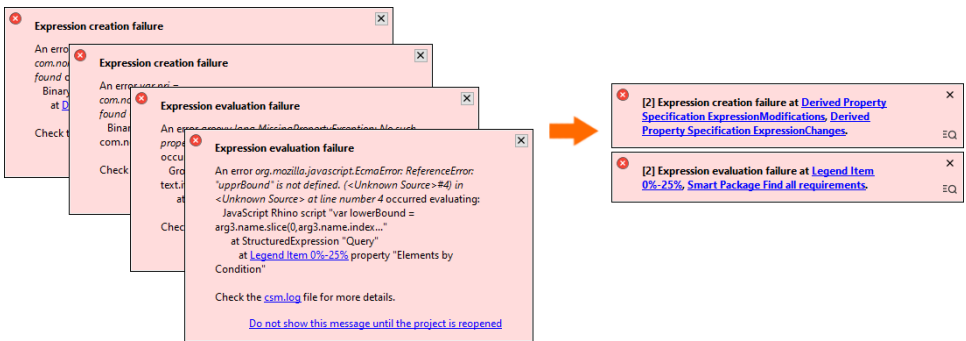
Other Improvements

- **Installation file for Apple M1/M2.** 2022x Refresh1 release provides two different installation files for macOS based on its processor architecture: in addition to the x86 one, now there is also a separate installation file for the one based on ARM (i.e., Apple M1). It is bundled with ARM architecture Java. The modeling tool runs up to 2-3 times faster with ARM architecture Java on Apple M1.

[Back to top](#)

Modeling and Infrastructure

- A new **UI Font** environment option is now available, allowing you to change the default font the application should be displayed in. This change also supports the correct display of non-Latin scripts.
- The Standard/Expert UI modes are now removed from the Structured Expressions dialogs. Instead, the dialogs are now fully featured by default without the need to switch between modes.
- From now on, you can create project disclaimer configurations to display custom disclaimers upon opening a project. The disclaimers can contain any information you want project users to be aware of before opening the project. [Learn more about project disclaimer configurations >>](#)
- Instead of displaying individual error notifications of the same type, they are now grouped based on their type (expression creation failure, expression evaluation failure, model change and diagram load in expressions), allowing a more compact display of notifications (see the image below).

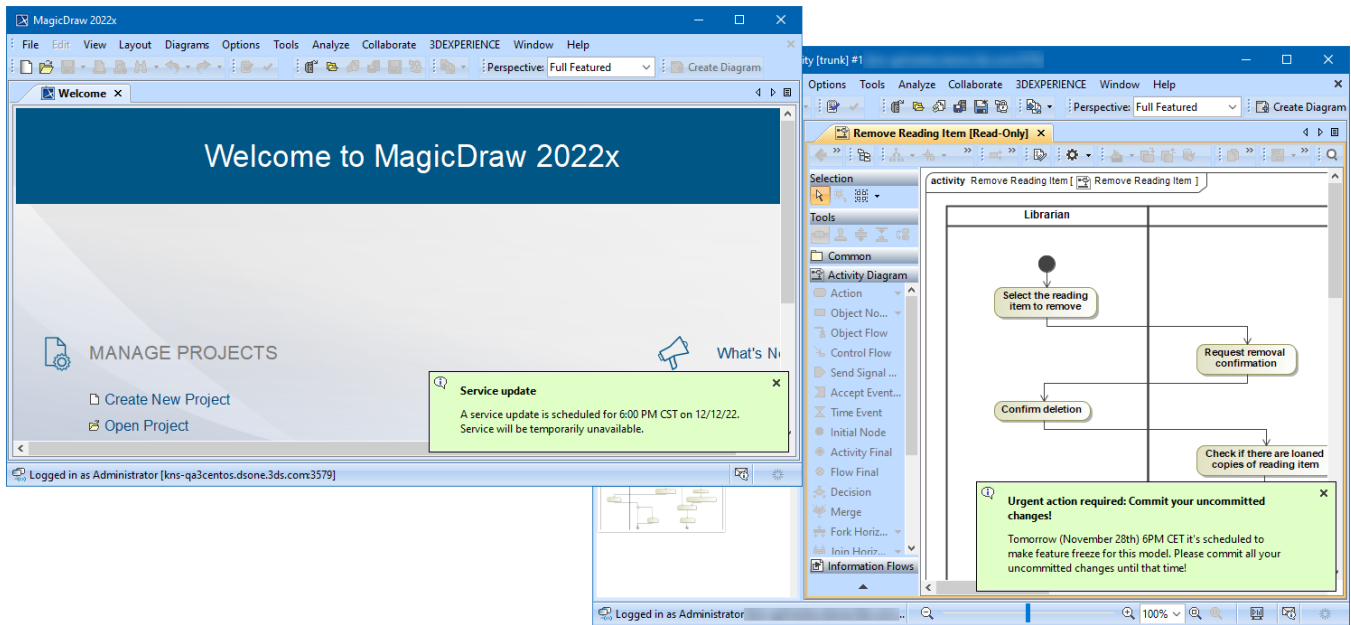


[Back to top](#)

Collaboration

Teamwork Cloud Announcements

The 2022x Refresh1 version of MagicDraw can show custom announcements to users. [Managed through Teamwork Cloud Admin](#), these announcements can contain information on server-wide upgrades, project-specific deadlines, or any other important news. An announcement is displayed in MagicDraw UI until a user acknowledges it by closing.

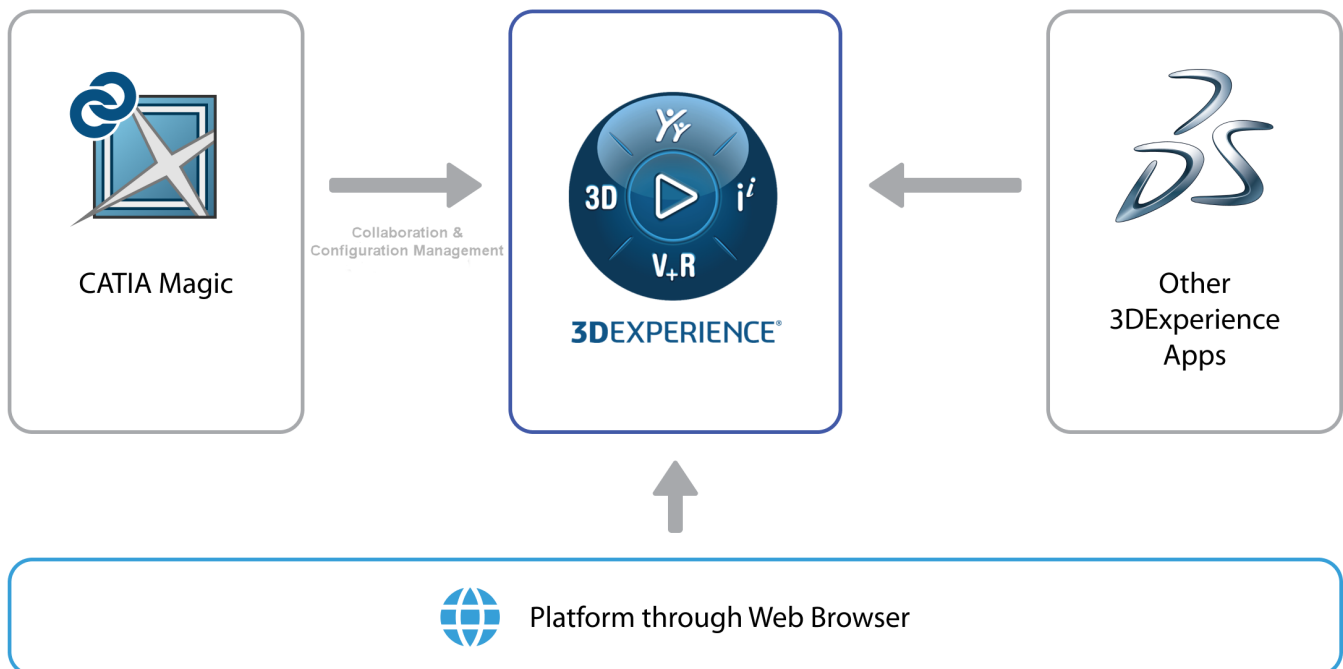


Teamwork Cloud announcement displayed on the Welcome screen of a modeling tool and a specific project.

[Back to top](#)

Collaboration Powered by 3DEXPERIENCE Platform

We introduce Power'By – a new way to collaborate on models within the 3DEXPERIENCE platform environment. For programs and projects requiring models to span across multiple engineering disciplines, Power'By allows leveraging native 3DEXPERIENCE platform capabilities, such as access control, advanced configuration management, traceability through the digital thread, and many others. The initial release aims to provide core collaboration features: storing and loading projects, working on them simultaneously, and committing and updating changes as part of configuration management control.



Version news of servers and plugins

- [Teamwork Cloud 2022x Refresh1](#)
- [SysML Plugin 2022x Refresh1](#)
- [Cameo Simulation Toolkit 2022x Refresh1](#)
- [UAF 1.2 Plugin 2022x Refresh1](#)
- [Cameo DataHub 2022x Refresh1](#)

MagicDraw Documentation

- [MagicDraw 2022x Refresh1](#)

News of earlier versions

- [MagicDraw 2022x](#)
- [MagicDraw 2021x Refresh2](#)
- [MagicDraw 2021x Refresh1](#)
- [MagicDraw 2021x](#)
- [Product News Archive](#)