

# Navigation and filtering

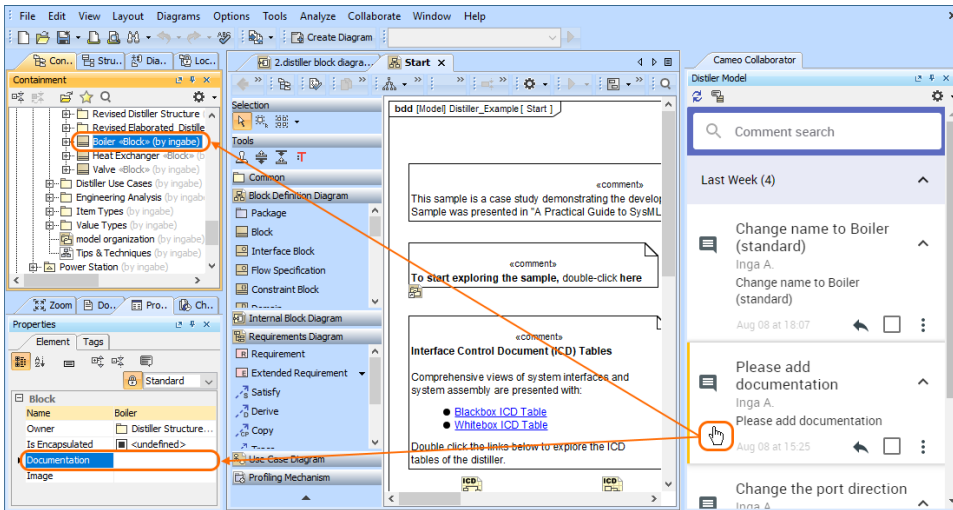
On this page

- [Navigating between comments and commented items](#)
- [Filtering commented elements](#)

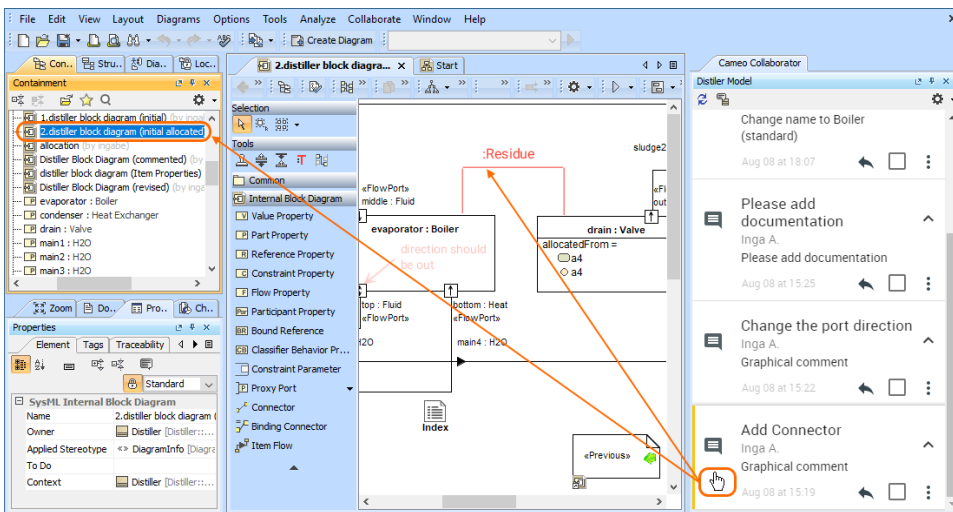
## Navigating between comments and commented items

After [opening the comments panel](#), you can navigate from comments to commented items and vice versa the following way:

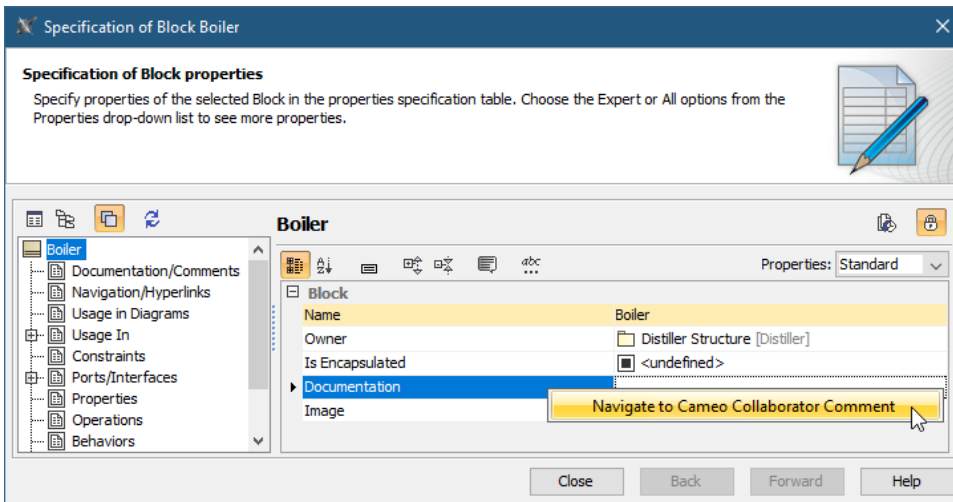
- Click a textual comment in the comments panel to navigate to the commented element and its commented properties.



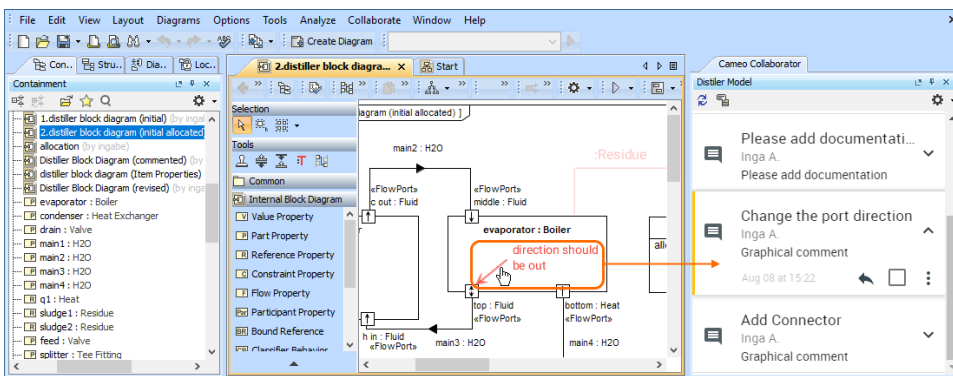
- Click a graphical comment in the comments panel to navigate to the commented diagram and the graphical comment in that diagram. Other comments in the diagram will be shaded.



- In the Specification window or the Quick properties panel, right-click a commented element property and select **Navigate to Cameo Collaborator Comment** to navigate to the comment in the comments panel. Commented properties are highlighted in yellow.



- Click a graphical comment in a diagram to navigate to the comment in the comments panel.




### Working with the comments panel

In the Cameo Collaborator comments panel you can:


- Select comment text to automatically copy it to the clipboard.

### Filtering commented elements

- Click  on the top left corner of the comments panel to see if there are any new comments in the document.

When addressing Cameo Collaborator comments in a modeling tool, you can quickly find commented elements and commented properties by filtering them out.

To filter commented elements



- In a modeling tool, open the model that has Cameo Collaborator comments.
- Open the Cameo Collaborator comments panel.
- On the top of the Cameo Collaborator comments panel, click .

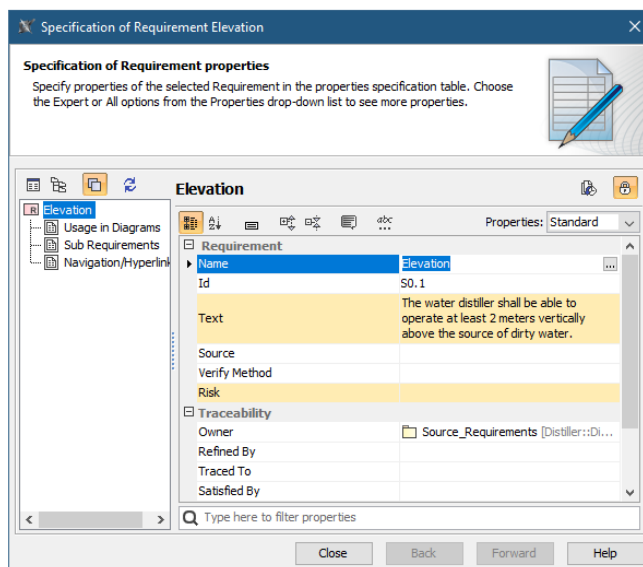
After completing the above steps, all the model elements that have comments are displayed in the **Validation Results** panel on the bottom of your modeling tool.

Validation Results				
Validation Results				
Element	Severity	Abbreviation	Message	Not Ignored
<div> <div>Cameo Collaborator ValSuite</div> <div> <div>iChargingStatus</div> <div>iHighVoltagePort</div> <div>iLowVoltagePort</div> </div> </div>	<div>info</div> <div>info</div> <div>info</div>	<div>CommEl</div> <div>CommEl</div> <div>CommEl</div>	<div>The element has Cameo Collaborator comments.</div> <div>The element has Cameo Collaborator comments.</div> <div>The element has Cameo Collaborator comments.</div>	<div>Not Ignored</div> <div>Not Ignored</div> <div>Not Ignored</div>
3 Info				

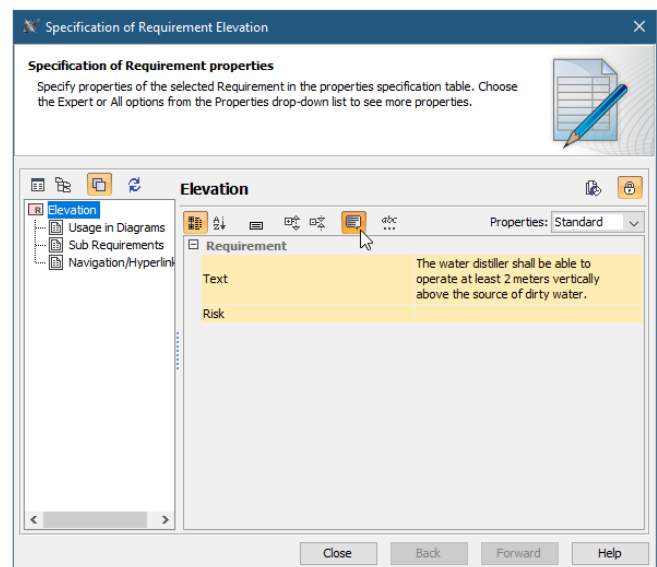
The Validation Results panel displaying commented elements of a model.

To filter commented properties

1. In a modeling tool, open the model that has Cameo Collaborator comments.
2. [Open the Cameo Collaborator comments panel.](#)
3. Find the model element that has commented properties and do one of the following:
  - In the toolbar of the Quick Properties panel of the element, select .
  - Open the Specification window of the element and select .



Before filtering



After filtering

After selecting the commented properties filter icon, only the element properties that have comments are shown as displayed above