

2022x Refresh1 Version News



Released on: November 18, 2022

In version 2022x Refresh1, Cameo DataHub introduces many new features and improvements. Now you can create synchronization between existing data with newly introduced operation and customize node types in the DOORS data source by importing a custom JSON file. You can also benefit from the two-way synchronization of multi-value properties and mapping enumerations with empty values when working with ENOVIA Requirements.

[Creating Synchronization Between Existing Data](#)

[Mapping Enumerations with Empty Values](#)

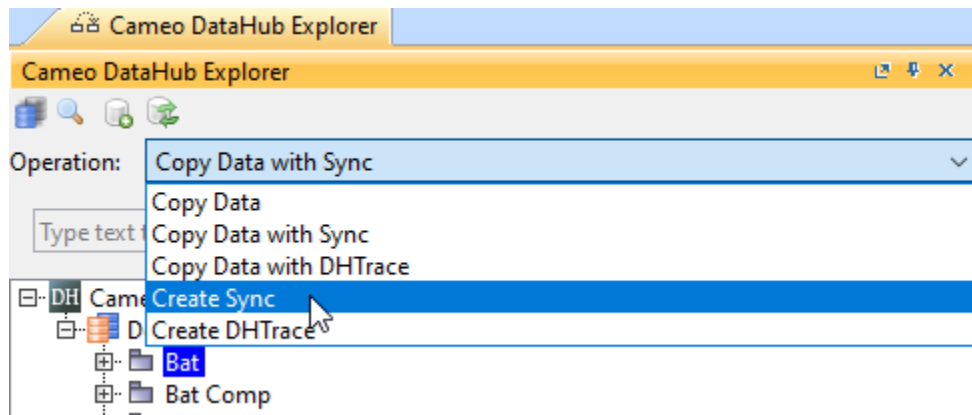
[Support for ENOVIA Requirements 22xFD03](#)

[Two way multi-value properties synchronization with ENOVIA Requirements](#)

[Customizing node type according to the JSON template](#)

Creating Synchronization Between Existing Data

Create Sync, a new type of operation, is added in the list of Cameo DataHub operations. The Create Sync operation will create synchronization (DHLink) on existing data. Before, in order to create synchronization (DHLinks), you were required to copy data from the data source to the model (Cameo). This new operation allows you to create synchronization (DHLinks) without replicating the data. A wizard will help define source, target, and key attributes based on which synchronization between source and target data sources are created.



Newly created Create Sync operation available in the list of Cameo DataHub operations

Two way multi-value properties synchronization with ENOVIA Requirements

Cameo DataHub connector for ENOVIA Requirements is enhanced with the new capability to enable two-way synchronization for multi-valued attributes. You can map and synchronize enumerated values of the attributes on both sides of the connection.

Converting Rule Editor

Define the conversion of mapped enumeration values between <ASIL> and <ASIL>. Convert all of the mapped enumeration values selected in the left table and automatically convert the values back in the right table vice versa. If there is no matching value, you must manually correct all the mapping attribute values shown in red.

Direction: Enum <ASIL> ----> Enum <ASIL>		Direction: Enum <ASIL> ----> Enum <ASIL>	
Enum <ASIL>	Enum <ASIL>	Enum <ASIL>	Enum <ASIL>
<no value>	<no value>	<no value>	To Be Filled
ASIL_QM	ASIL_QM	NA	Not Applicable
ASIL_QM (QM)	ASIL_QM (QM)	Safety Related	Not Applicable
ASIL_C (C)	ASIL_C (C)	ASIL_QM	ASIL_QM
ASIL_C (D)	ASIL_C (D)	ASIL_QM (QM)	ASIL_QM (QM)
ASIL_D	ASIL_B (B)	ASIL_QM (A)	ASIL_QM (A)
ASIL_D (D)	ASIL_B (C)	ASIL_QM (B)	ASIL_QM (B)
Not Applicable	ASIL_B (D)	ASIL_QM (C)	ASIL_QM (C)
To Be Filled	ASIL_C	ASIL_QM (D)	ASIL_QM (D)
ASIL_QM (A)	ASIL_C (C)	ASIL_A	ASIL_A
ASIL_QM (B)	ASIL_C (D)	ASIL_A (A)	ASIL_A (A)

Multi-valued attribute mapping.

Mapping Enumerations with Empty Values

Cameo DataHub connector for ENOVIA Requirements is enhanced with the new capability to enable empty valued attributes. Now, you can select <no value> to be mapped to an attribute which does not have any value assigned. This scenario comes in handy when no value is a legitimate value on the list of possible values for a selected attribute.

Converting Rule Editor

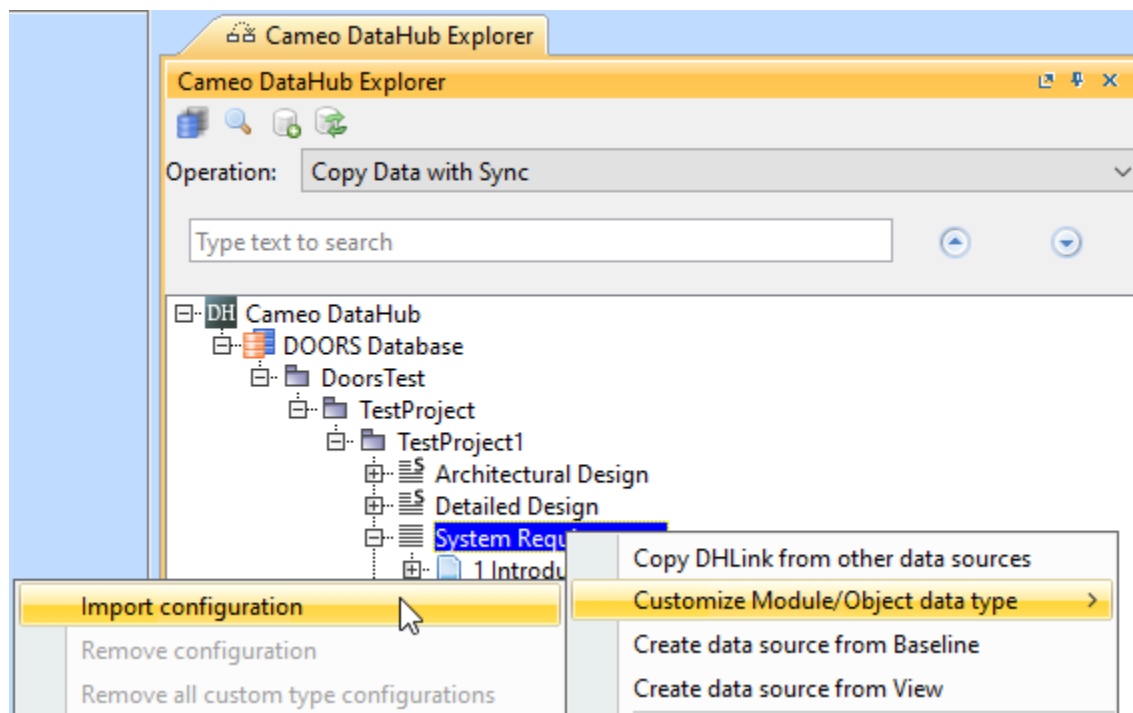
Define the conversion of mapped enumeration values between <ASIL> and <ASIL>. Convert all of the mapped enumeration values selected in the left table and automatically convert the values back in the right table vice versa. If there is no matching value, you must manually correct all the mapping attribute values shown in red.

Direction: Enum <ASIL> ----> Enum <ASIL>		Direction: Enum <ASIL> ----> Enum <ASIL>	
Enum <ASIL>	Enum <ASIL>	Enum <ASIL>	Enum <ASIL>
<no value>	<no value>	<no value>	To Be Filled
ASIL_QM	<no value>	NA	Not Applicable
ASIL_QM (QM)	NA	Safety Related	Not Applicable
ASIL_C (C)	Safety Related	ASIL_QM	ASIL_QM

Mapping properties with empty value attribute

Customizing node type according to the JSON template

A new feature is introduced in Cameo Datahub, which allows you to import a custom created Json file for DOORS data source. You can create rules for an attribute's values in order to customize node type using a Json file.



Selecting Import Configuration command for adding the custom .json file.

Support for ENOVIA Requirements 22xFD03

Cameo DataHub connector for ENOVIA Requirements is now compatible with the platform version 2022x FD03.

Cameo DataHub documentation

- [Cameo DataHub Documentation](#)

News of earlier versions

- [Cameo Datahub 2022x](#)
- [Cameo DataHub 2021x Refresh2](#)
- [Cameo DataHub 2021x Refresh1](#)
- [Cameo DataHub 2021x](#)
- [Cameo DataHub 19.0 LTR SP4](#)
- [Cameo DataHub 19.0 LTR SP3](#)
- [Cameo DataHub 19.0 LTR SP2](#)
- [Cameo DataHub 19.0 LTR SP1](#)
- [Cameo DataHub 19.0 LTR](#)
- [Product News Archive](#)