

Auto Open Diagrams option

The **Auto Open Diagrams** option in the **Environment Options** dialog and Simulation window allows Magic Model Analyst to open a tab where you can see a diagram that contains a currently active Element in a non-silent simulation (animation is enabled). If you want to enable this option, you need to select **true** as its value. This is useful when you want to track the simulation current status. Select **false** as the value of **Auto Open Diagrams** when you would like to focus on just one diagram and avoid automatic switching or opening of diagrams.

If the value of **Auto Open Diagrams** is **false** and you run a silent-mode simulation of an activity diagram that has a decision node without any decision input, Magic Model Analyst will open the diagram and highlight all elements including the decision node and open a **Question** dialog to ask for a decision when the simulation reaches the decision node. However, if the value of **Auto Open Diagrams** is false, and you are running a non-silent simulation, Magic Model Analyst will open the diagram and highlight only the decision node.

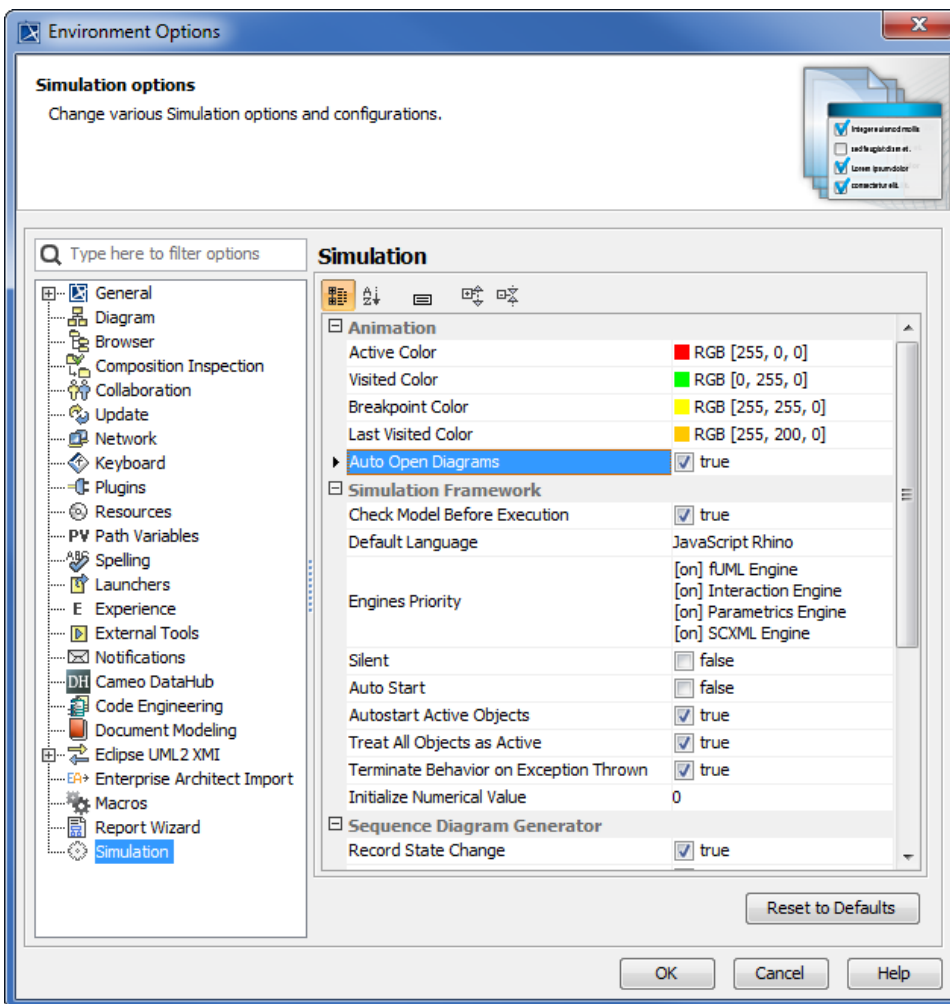


Note

The default value of **Auto Open Diagrams** is **false**.

To select the **Auto Open Diagrams** option in the **Environment Options** dialog

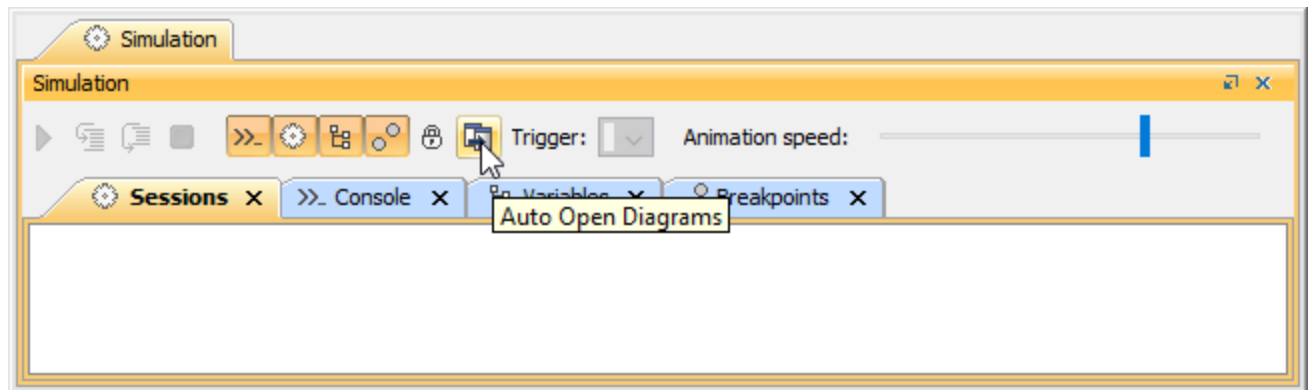
1. On the main menu, click **Options > Environment**. The **Environment Options** dialog will open as follows



2. Click **Simulation** on the left-hand side of the dialog and select the **Auto Open Diagrams** check box.
3. Click **OK**.

To select the **Auto Open Diagrams** option in the **Simulation** window

- Click the **Auto Open Diagrams** toggle button in the **Simulation** window as follows



Information

When animation with selected **Auto Open Diagrams** is used, it must open animated diagrams in the same tab and must not open new diagram windows as new tabs. If a diagram is already open in a tab other than the active tab, the other tab will close, and the diagram animation will be shown in the active tab.