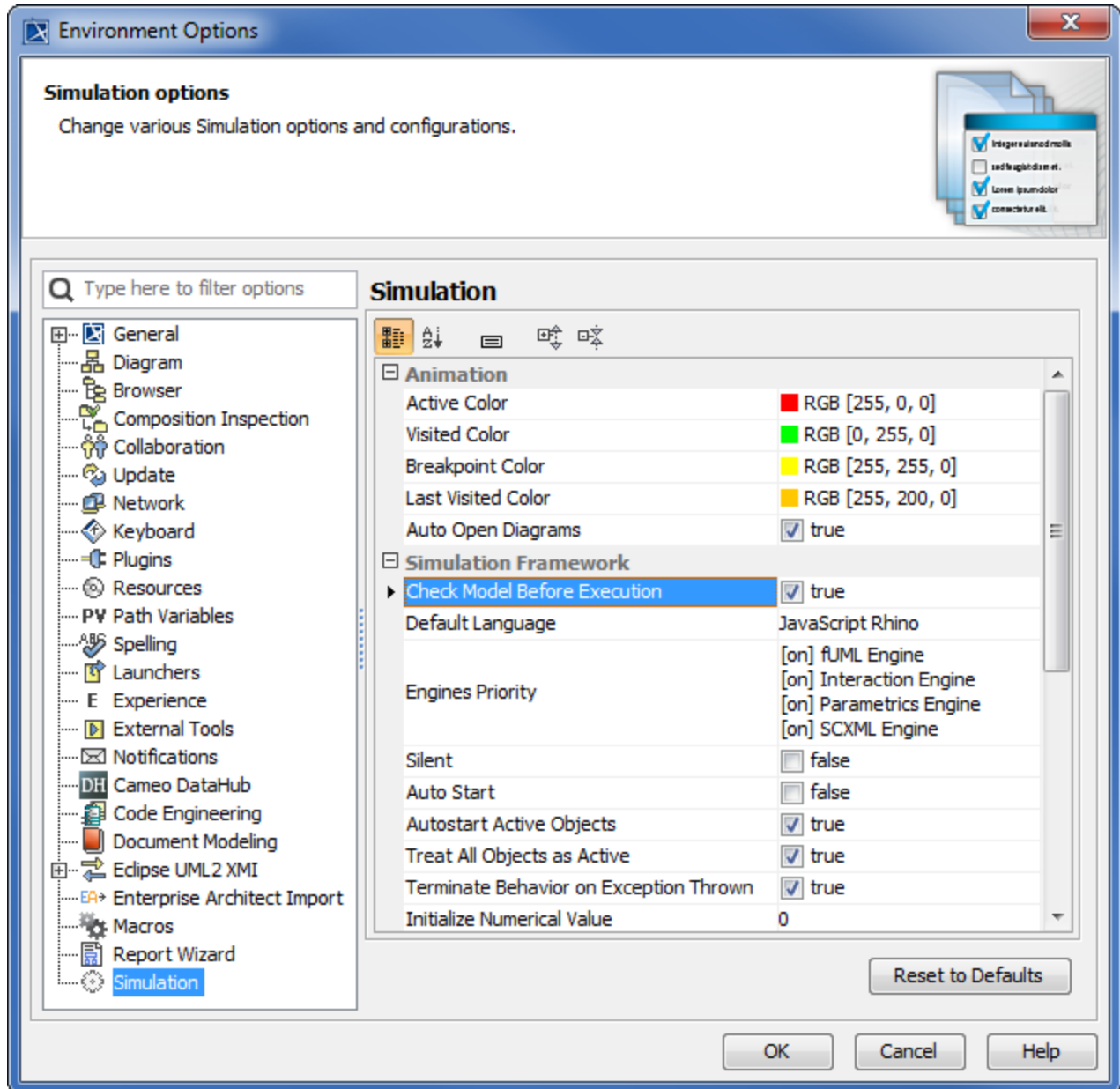


Validation and verification

Before executing UML or SysML model, you need to make sure that it has been correctly modeled, or you can use the Magic Model Analyst's validation feature to help you validate the model against a set of validation rules before executing it.

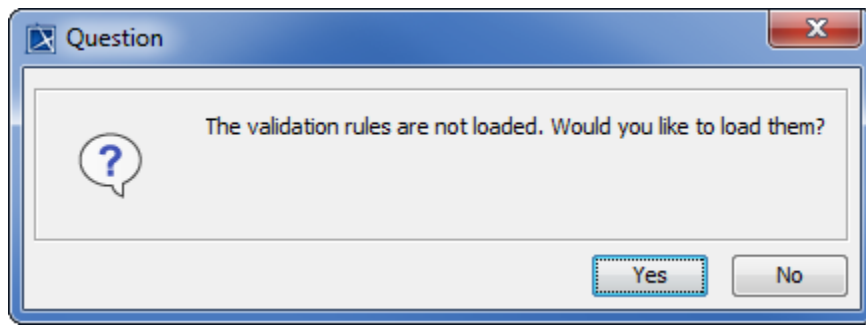
To validate a model

1. On the MagicDraw main menu, click **Options > Environment** to open the model validation option in the **Environment Options** dialog.
2. Select **Simulation** on the left-hand side pane and select the **Check Model Before Execution** check box.



3. Click **OK**.

4. Simulate your model. A dialog will open, asking whether you want to load the required profiles that contain the validation rules to validate your model (if your project does not contain the required validation rules).



5. Click **Yes** to load the validation rules and validate the model before the simulation or **No** to simulate the model without validating it.

Related page

- [Customizing environment options](#)