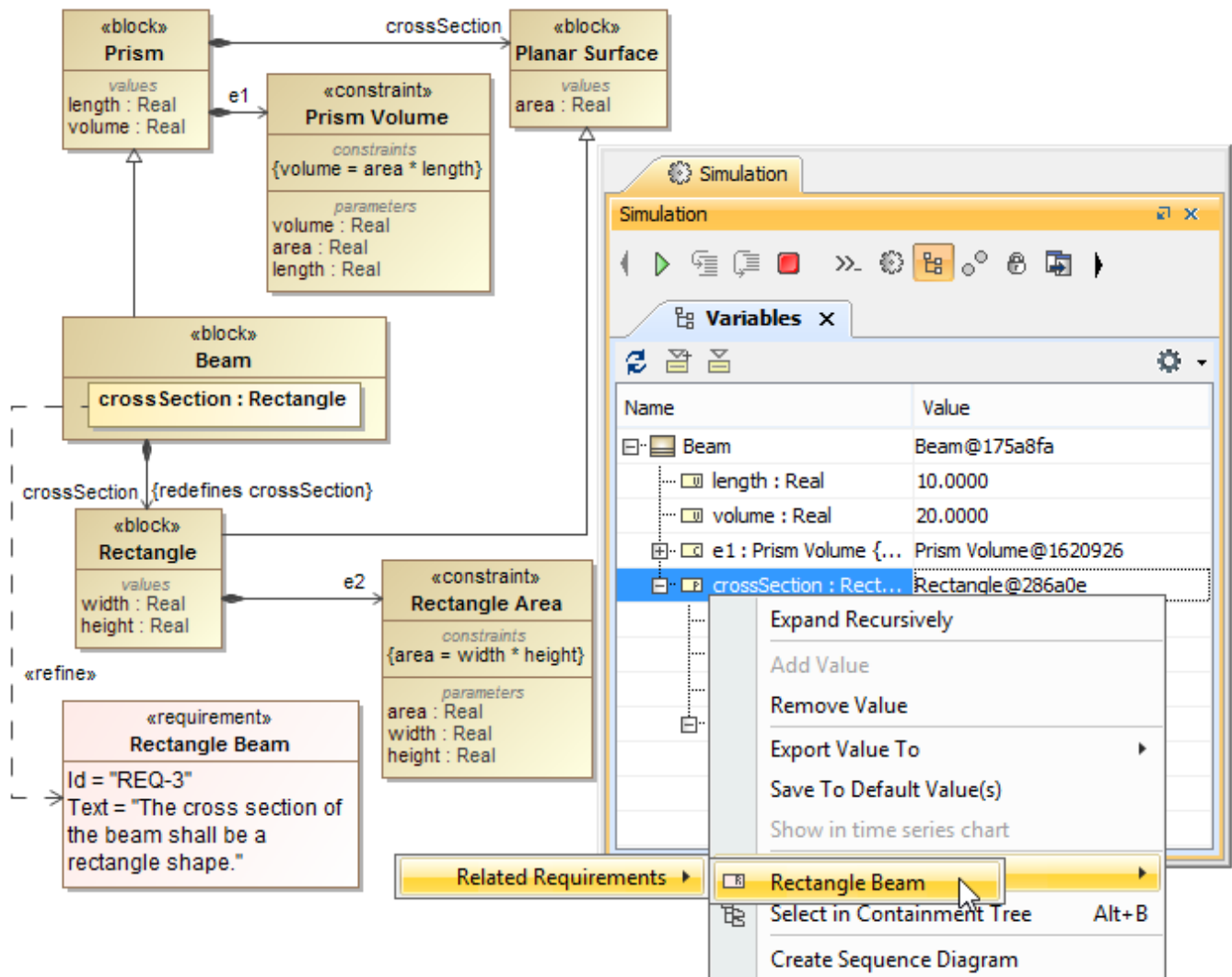


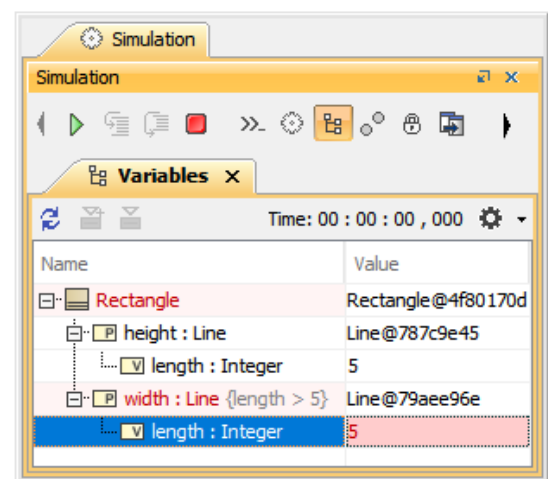
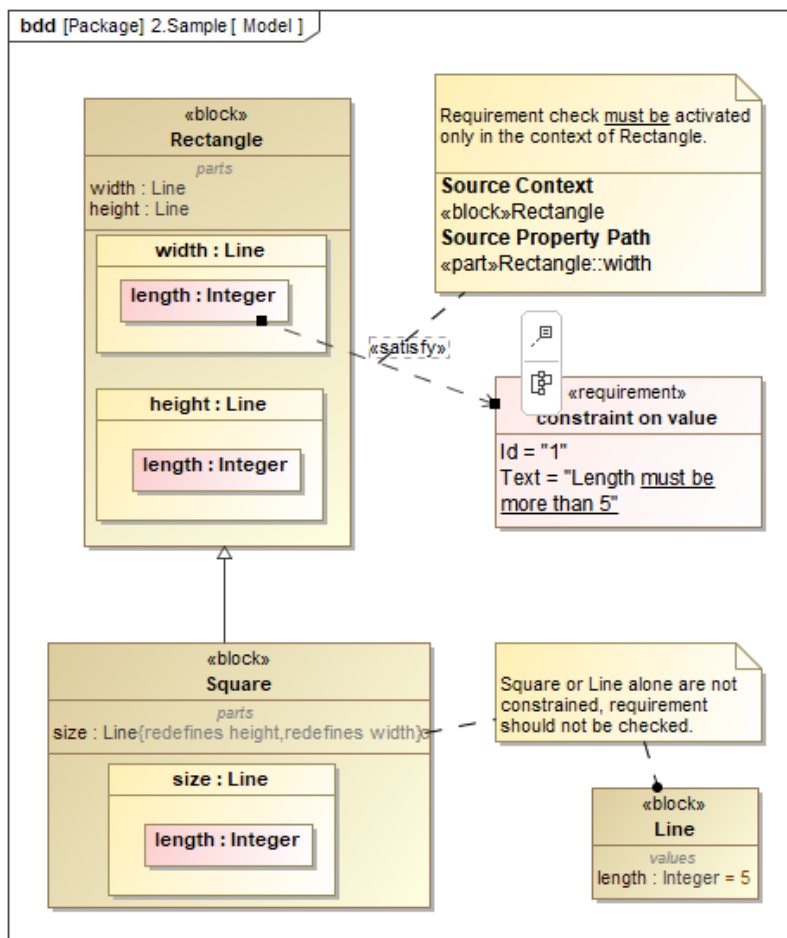
Requirement satisfied by a property

You can also select a value that specifies a property in the **Variables** pane to navigate into a SysML Requirement, which is satisfied by the property, in the Containment tree. When you right-click the value and select the **Go To** context menu, you will see a specific Requirement satisfied by the property.



Navigating into a Requirement satisfied by a Property.

Simulation Toolkit supports contextualized satisfy relationship that value property from inner nested structure is connected to Requirements. For example, the *constraint on value* Requirement must be satisfied by the *length of the width of Rectangle* object only in this context (not the *length of the height of Rectangle*, *length of Square*, or *length of Line* objects) through the **Source Context** and **Source Property Path** tags as shown in the figure below.



Contextualized satisfy relationship through the Source Context and Source Property Path tags.