

# 2022x Version News

## Magic Model Analyst

Released in: July 1, 2022

Magic Model Analyst release adds a handful of new capabilities to help you analyze your models more effectively than before. The highlight of this version is server-side simulation, allowing you to simulate Teamwork Cloud models using a web interface. Other enhancements include SIMULIA Process Composer integration, the ability to check requirements under dynamic conditions, improved visualization of verification results in Instance Tables, and more.

### [Server-Side Simulation](#)

### [SIMULIA Process Composer Integration \(Technology Preview\)](#)

### [Checking Requirements under Dynamic Conditions](#)

### [Visualization Improvements of Verification Results](#)

### [Other Enhancements](#)

### [Discontinued Integrations](#)

### Server-Side Simulation

The 2022x version release brings a major new capability allowing you to deploy Magic Model Analyst as a Teamwork Cloud service. Thanks to the server-side design, the execution of a model is significantly faster than on the client-side. In addition, you can containerize the simulation service by using Docker and achieve the desired performance and scalability required for any number of parallel users.

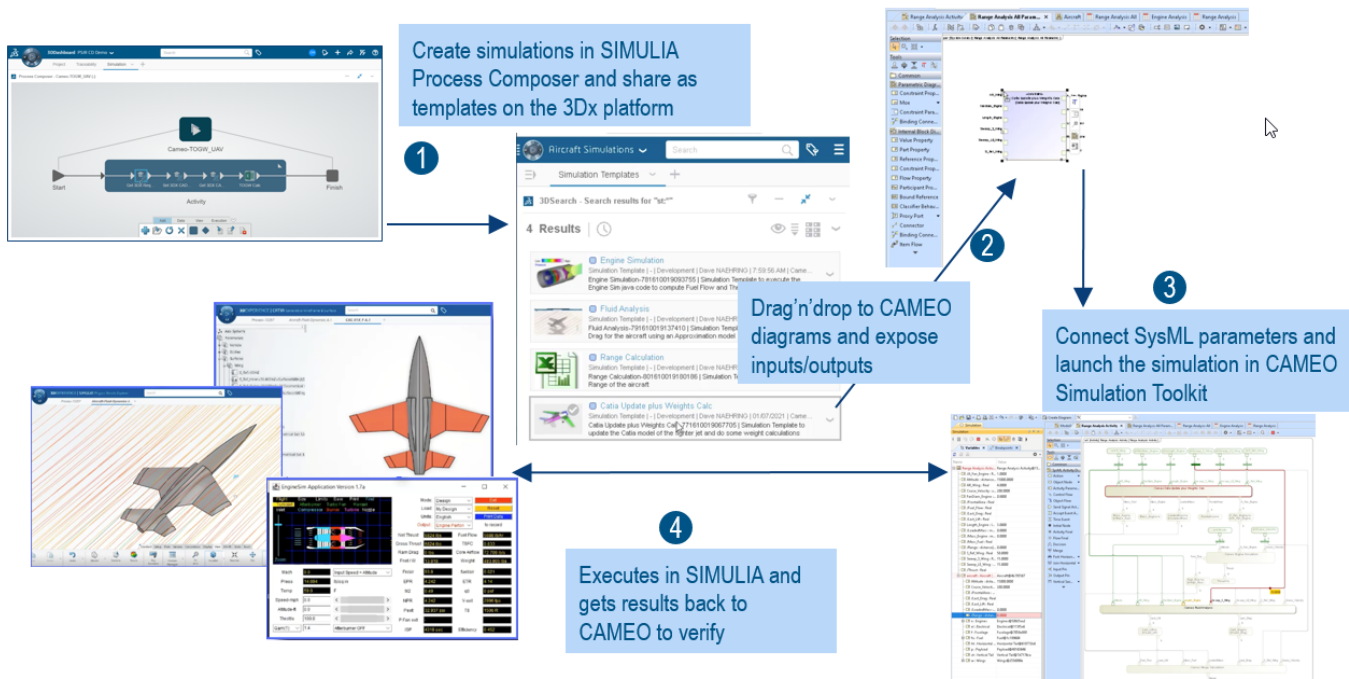
You can use server-side simulation to:

- Execute your models by using REST API, Python client, or via the Cameo Collaborator for Teamwork Cloud user interface if you have Cameo Collaborator documents stored on the server.
- Analyze your model by changing the input parameters to see how the output parameters are affected and thus support system engineering decisions without a modeling tool.
- Perform time-consuming and resource-intensive analyses such as trade studies or parameter sweeps much quicker.
- Facilitate integrating or exposing the SysML model execution to other system engineering domains.
- Execute several models in parallel.

[Learn more about server-side simulation >>](#)

### SIMULIA Process Composer Integration (Technology Preview)

If you have access to a Simulation Template in SIMULIA, you can use it to simulate your model by simply dragging the template to an Activity or Parametric Diagram.

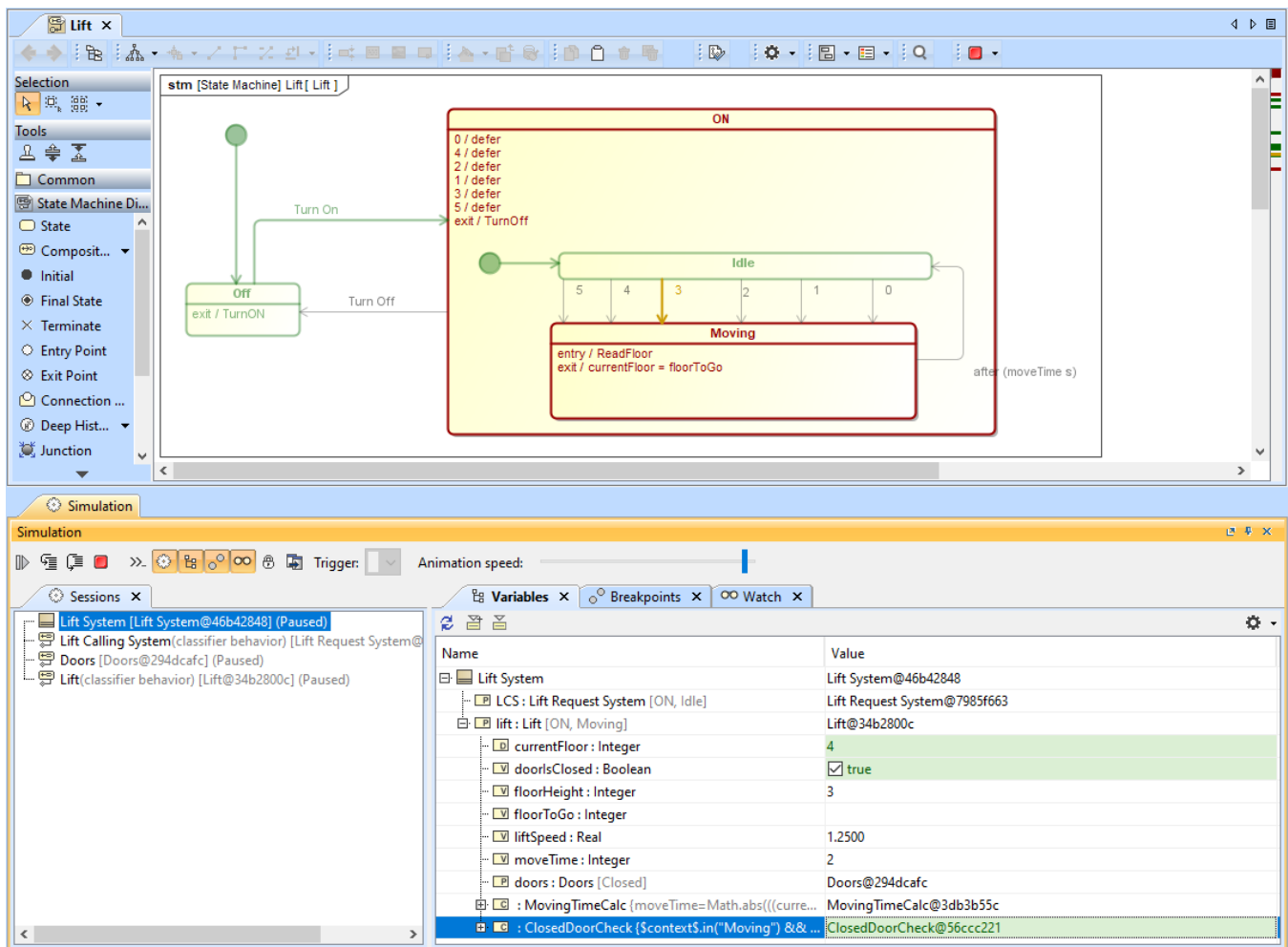


SIMULIA Process Composer integration.

[Learn more about SIMULIA Process Composer integration >>](#)

## Checking Requirements under Dynamic Conditions

The new version of Magic Model Analyst provides a possibility to check requirements under dynamic conditions. Now you can perform an even more detailed analysis by checking the system parameters only in a certain state or activity. In addition, you can easily ensure that certain activities are carried out in a specific state.



Checking requirements in a certain state of activity.

## Visualization Improvements of Verification Results

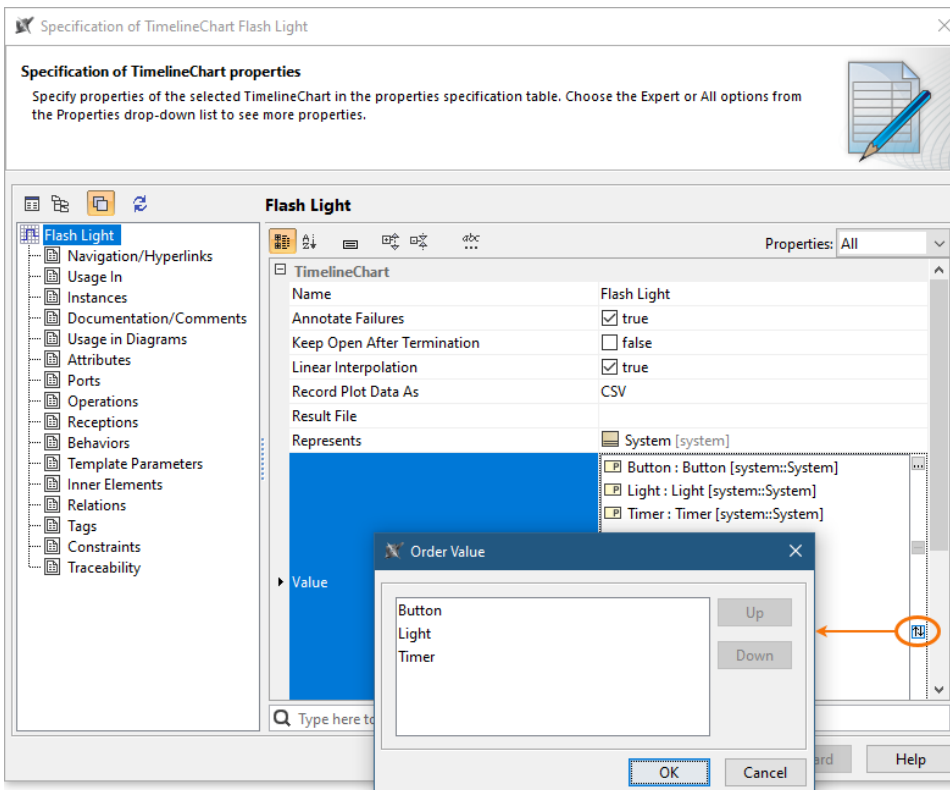
You no longer need to use the Simulation Profile in your model to show the verification status of values in Instance Tables. Now both passed and failed values are highlighted by using the mechanism of diagram Legends.

Verification Status: <input type="checkbox"/> Pass <input type="checkbox"/> Fail					
#	Name	ma	me	mr	margin
1	spacecraft	130 kg	95 kg	15 kg	35 kg
2	propulsion	80 kg	68 kg	7 kg	12 kg
3	tank	44 kg	38 kg	44 kg	6 kg
4	thruster	29 kg	30 kg	29 kg	-1 kg
5	telecom	35 kg	27 kg	5 kg	8 kg
6	antenna	20 kg	19 kg	20 kg	1 kg
7	amplifier	10 kg	8 kg	10 kg	2 kg

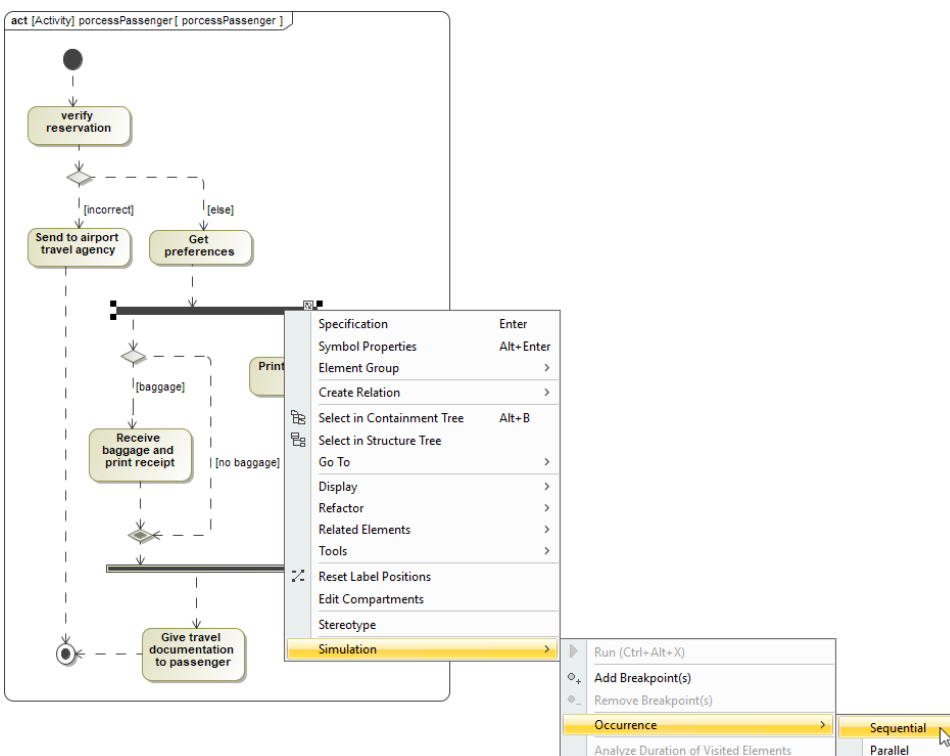
Value verification status is displayed in an Instance Table without using the Simulation Profile.

## Other Enhancements

- Magic Model Analyst 2022x introduces the possibility to reorder values in charts.



- Now simulation debugging is simpler because Magic Model Analyst provides more error and warning messages with useful information allowing you to indicate the cause of simulation problems.
- A new project option and Simulation Configuration property give the possibility to enable or disable concurrent allocated Activities. Enabling concurrent allocated Activities means that Activities can be executed in parallel even if the allocated resource is busy.
- Magic Model Analyst introduces a new functionality allowing you to add a constraint to an individual fork and this way specify whether it works in a parallel or sequential way.



As of version 2022x, the integration with Maple is no longer supported.

#### **Documentation**

- [Magic Model Analyst 2022x](#)

#### **News of earlier versions**

- [Magic Model Analyst 2021x Refresh2](#)
- [Magic Model Analyst 2021x Refresh1](#)
- [Magic Model Analyst 2021x](#)
- [Magic Model Analyst 19.0 LTR SP4](#)
- [Magic Model Analyst 19.0 LTR SP3](#)
- [Magic Model Analyst 19.0 LTR SP2](#)