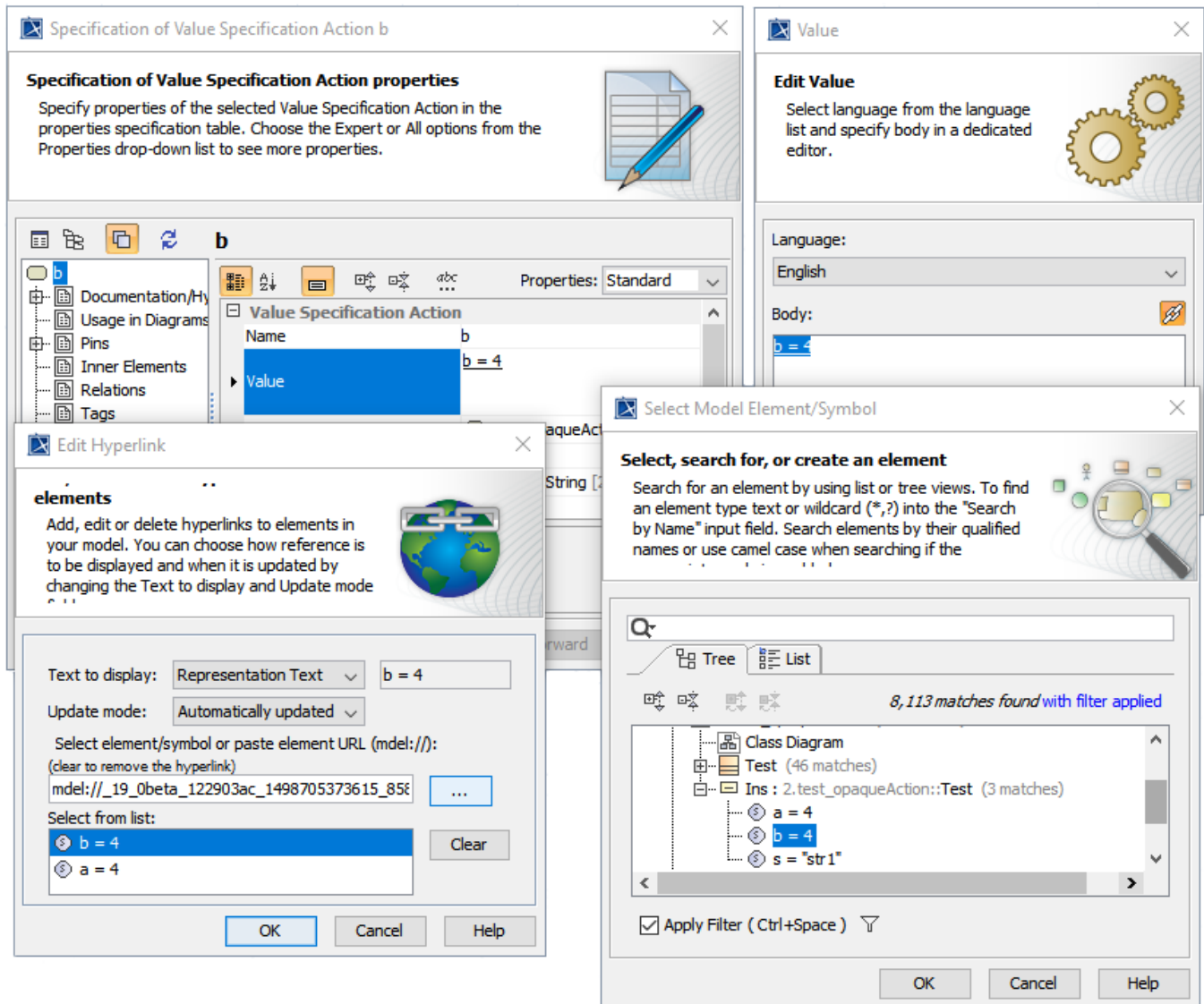


References to elements with HTML

Magic Model Analyst can make references to model Elements using HTML through the [Edit Hyperlink dialog](#). Those objects that allow references are ValueSpecification.Value, LiteralString.Value, OpaqueExpression.Body, OpaqueAction.Body, OpaqueBehavior.Body, Constraint.Specification, and ObjectFlow.Guard.

This feature has been developed to have references in text to model elements in various scripts. Magic Model Analyst converts HTML into plain texts before execution. In the following figure, ValueSpecification.Value (b) can refer to slot (**b = 4**) of an InstanceSpecification (Ins). If the value of slot (**b = 4**) changes, ValueSpecification.Value (b) will change accordingly.



A sample of references to elements with HTML.

Related page

- [Edit Hyperlink dialog](#)