

Installing Web Application Platform on Linux with GUI

The content of this chapter is intended for system administrators. Here you can learn how to install and configure Web Application Platform with Cameo Collaborator and other web applications used with Teamwork Cloud.

Installation prerequisites and other important information

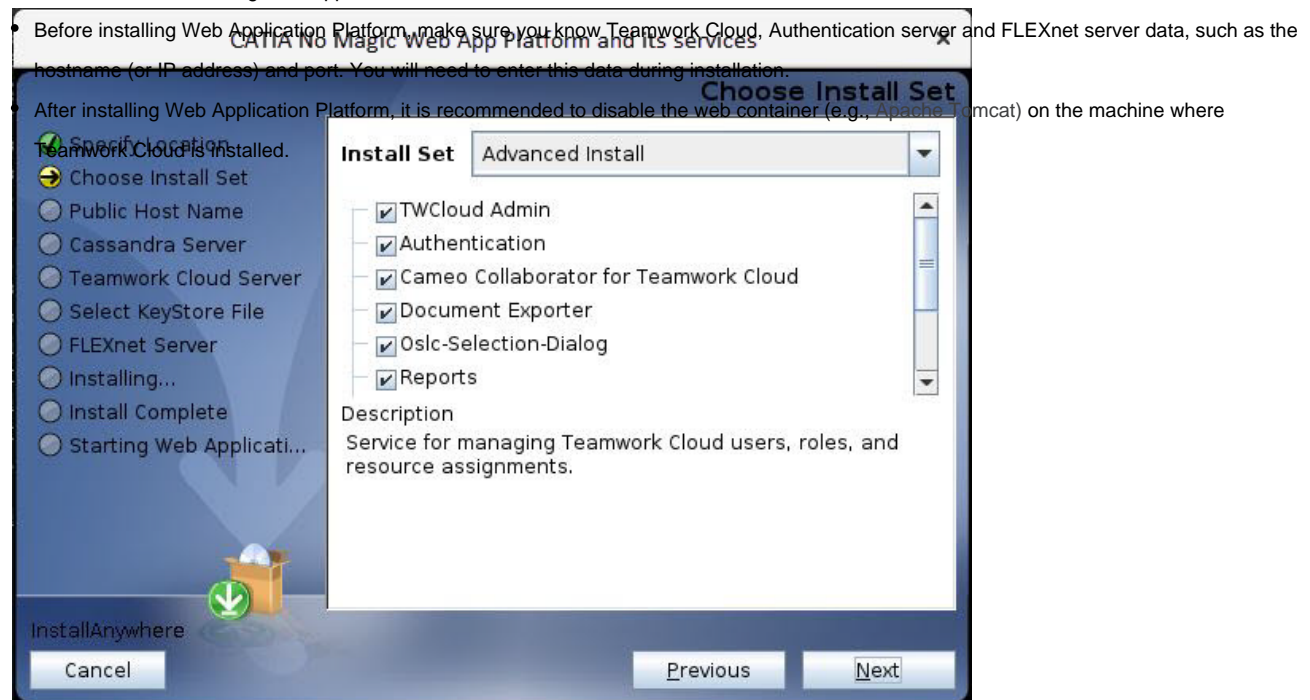
Before installing Web Application Platform with services, you need to:

- Have a working instance of [Teamwork Cloud](#).
- If you intend to install the Cameo Collaborator for Teamwork Cloud application, make sure that the [FlexNet license server](#) is installed beforehand.

1. Download the `Web_App_Platform_<version number>_linux.sh` file.
2. Specify the location where you want to install the Web Application Platform in one of the following ways:
 - Use the default location suggested in the **Where would you like to install?** box.
 - Click **Choose** and select a location on your machine.

Before clicking **Next** on the installation, you should know the following:

4. Select the **Advanced Install** radio button and click **Next**.
5. Select the checkboxes next to the services you want to install and click **Next**.
 - We recommend installing Web Application Platform and Teamwork Cloud on different machines.

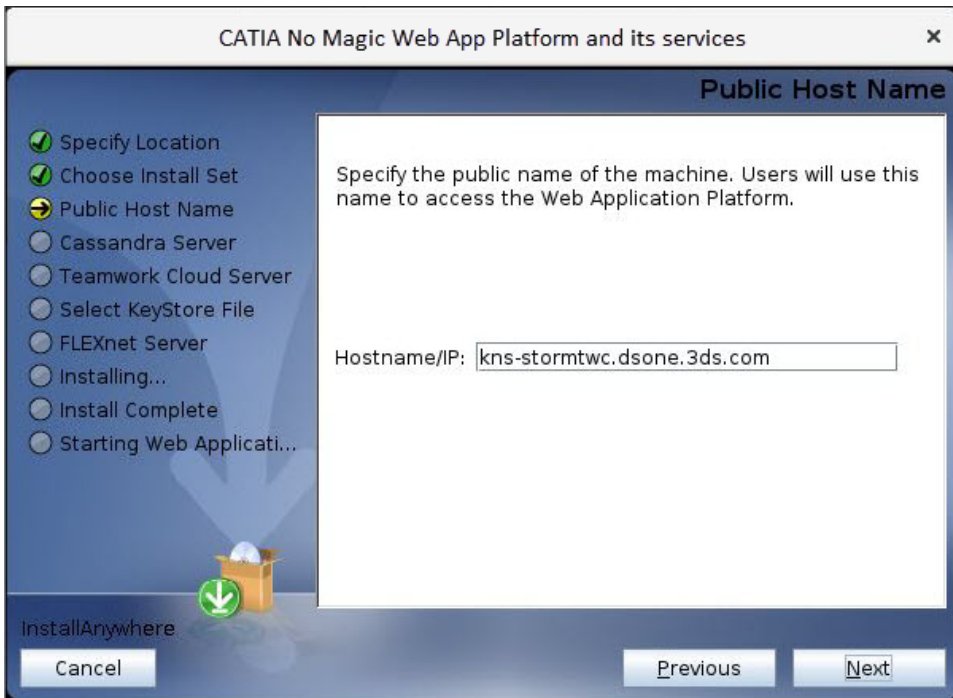


Tip

Click the service name to read its description at the bottom of the installation wizard or read the service documentation listed below:

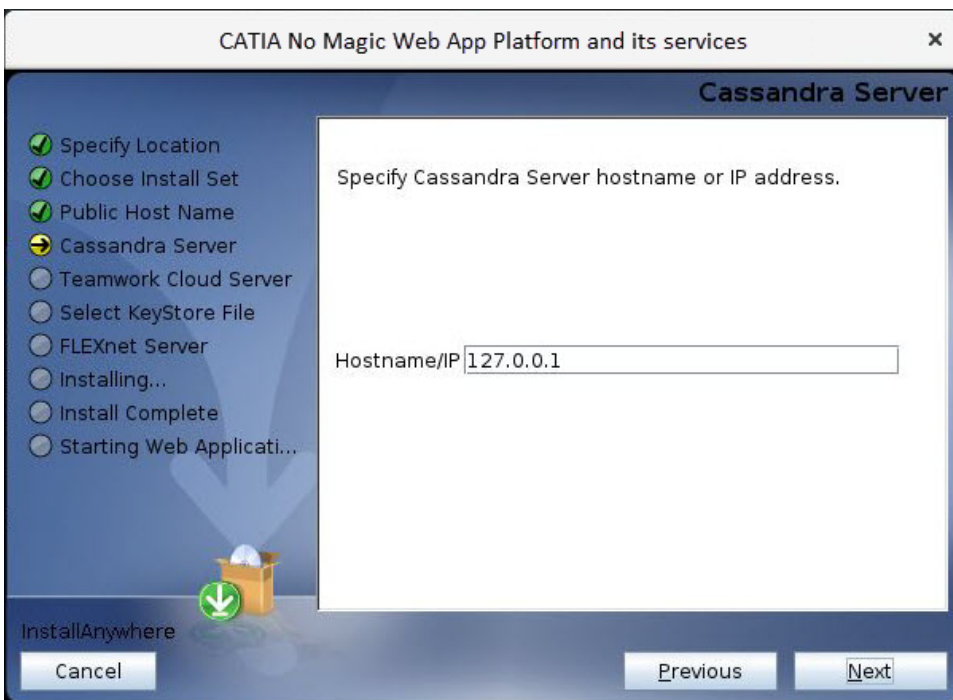
- [Teamwork Cloud Admin](#)
- [Authentication](#)
- [Cameo Collaborator for Teamwork Cloud](#)
- [Document Exporter](#)
- [Oslc-Selection-Dialog](#)
- [Reports](#)
- [Resource Usage Map](#)
- [Resources](#)
- [Simulation](#)
- [WebApp](#)

6. Specify the public hostname (or IP address) of the machine and click **Next**.



The dialog box is titled "CATIA No Magic Web App Platform and its services" and has a close button (X) in the top right corner. The main title of the dialog is "Public Host Name". On the left side, there is a list of steps in the installation process, each with a radio button and a status icon (green checkmark for completed, yellow arrow for current, and grey circle for not started). The steps are: Specify Location, Choose Install Set, Public Host Name (current), Cassandra Server, Teamwork Cloud Server, Select KeyStore File, FLEXnet Server, Installing..., Install Complete, and Starting Web Applicati... At the bottom left, there is a green arrow pointing down and the text "InstallAnywhere". At the bottom right, there are three buttons: "Cancel", "Previous", and "Next". The main content area on the right contains the text: "Specify the public name of the machine. Users will use this name to access the Web Application Platform." Below this text is a text input field labeled "Hostname/IP:" containing the value "kns-stormtwc.dsone.3ds.com".

7. Specify the hostname (or IP address) of the Cassandra server and click **Next**.



The dialog box is titled "CATIA No Magic Web App Platform and its services" and has a close button (X) in the top right corner. The main title of the dialog is "Cassandra Server". On the left side, there is a list of steps in the installation process, each with a radio button and a status icon (green checkmark for completed, yellow arrow for current, and grey circle for not started). The steps are: Specify Location, Choose Install Set, Public Host Name, Cassandra Server (current), Teamwork Cloud Server, Select KeyStore File, FLEXnet Server, Installing..., Install Complete, and Starting Web Applicati... At the bottom left, there is a green arrow pointing down and the text "InstallAnywhere". At the bottom right, there are three buttons: "Cancel", "Previous", and "Next". The main content area on the right contains the text: "Specify Cassandra Server hostname or IP address." Below this text is a text input field labeled "Hostname/IP:" containing the value "127.0.0.1".

8. Specify the Teamwork Cloud hostname (or IP address), REST API port, and client API port in the appropriate boxes.

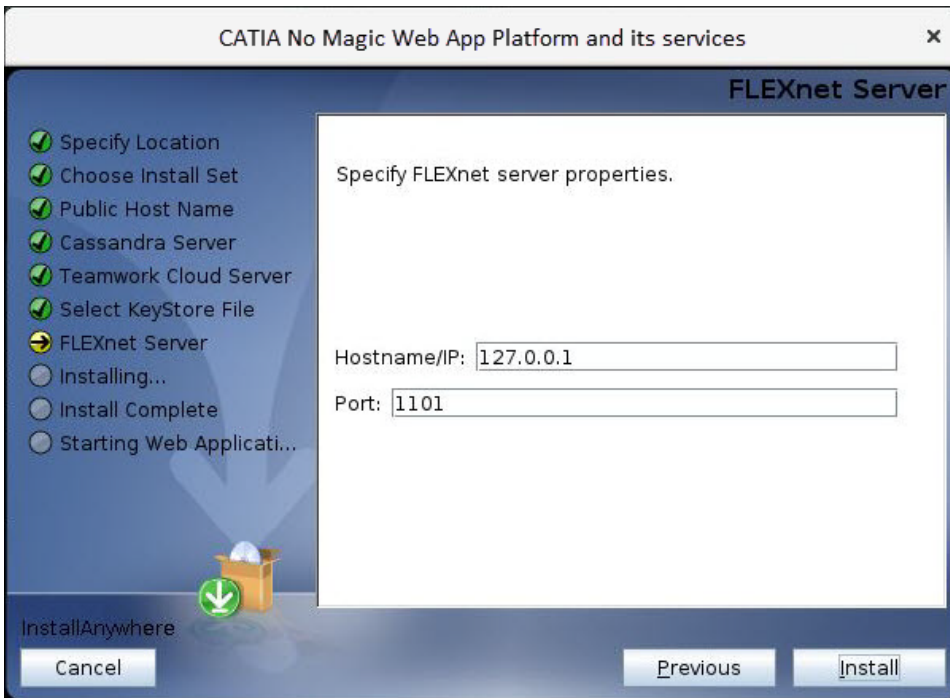
9. If your Teamwork Cloud instance uses SSL certificates, select the **SSL** check box.

The screenshot shows the 'Teamwork Cloud Server' configuration window. On the left, a list of installation steps is shown with progress indicators: 'Specify Location', 'Choose Install Set', 'Public Host Name', 'Cassandra Server', 'Teamwork Cloud Server' (highlighted with a yellow arrow), 'Select KeyStore File', 'FLEXnet Server', 'Installing...', 'Install Complete', and 'Starting Web Applicati...'. The main area contains the text 'Specify Teamwork Cloud server properties.' and three input fields: 'Hostname/IP:' with the value '127.0.0.1', 'REST port:' with the value '8111', and 'TWC client port:' with the value '3579'. Below these fields is a checked checkbox labeled 'SSL'. At the bottom, there are 'Cancel', 'Previous', and 'Next' buttons. A small 'InstallAnywhere' logo is visible in the bottom left corner.

10. Click **Next**.
11. Specify the KeyStore file with the same certificate that is used in Teamwork Cloud for authentication configuration and click **Next**.

The screenshot shows the 'Select KeyStore File' configuration window. On the left, the same list of installation steps is shown, but 'Select KeyStore File' is now highlighted with a yellow arrow. The main area contains the text 'Select the KeyStore file with the same certificate that is used in Teamwork Cloud for authentication configuration.' and a note: 'NOTE: The KeyStore file will be copied to <webapp_platform_installation_directory>/conf Path Example: /tmp/keystore.p12'. Below the note is an input field for 'Keystore file:' with the value '/usr/local/bin/tmp/keystore.p12'. There are two buttons below the input field: 'Restore Default' and 'Choose...'. At the bottom, there are 'Cancel', 'Previous', and 'Next' buttons. A small 'InstallAnywhere' logo is visible in the bottom left corner.

12. Specify the FLEXnet server hostname (or IP address) and port in the appropriate boxes and click **Install**.



13. When you get the notification that Web Application Platform is successfully installed, click **Next**.
14. If you want to start Web Application Platform after exiting the installation wizard, select the **Start Zookeeper and WebApp as a service** check box.
15. Click **Done**.
16. When the installation is finished, update the **authentication.redirect.uri.whitelist** property in the *authserver.properties* file by adding the Web Application Platform address `http(s)://<domain_name>:<port>/webapp` as its value.
17. If you chose to install Came Collaborator for Teamwork Cloud, [apply the Cameo Collaborator license](#).

Web Application Platform is now installed with the selected services and started if you choose this option in step 15. To access Web Application Platform, open a web browser and go to `http(s)://<domain_name>:<port>/webapp`. By default, the Web Application Platform uses port 8443.



Starting Web Application Platform manually

If you want to [start Web Application Platform manually](#), start Zookeeper first and then start Web Application Platform.

Related pages

- [Installing Web Application Platform on Windows](#)
- [Installing Web Application Platform manually](#)

Scripts for upgrading Java and Tomcat in the Linux environment

- **Java:** [upgrade_jdk_webapp.sh](#)
- **Tomcat:** [upgrade_tomcat_webapp.sh](#)