

Installing Web Application Platform on Windows

The content of this chapter is intended for system administrators. Here you can learn how to install and configure Web Application Platform with Cameo Collaborator and other web applications used with Teamwork Cloud.

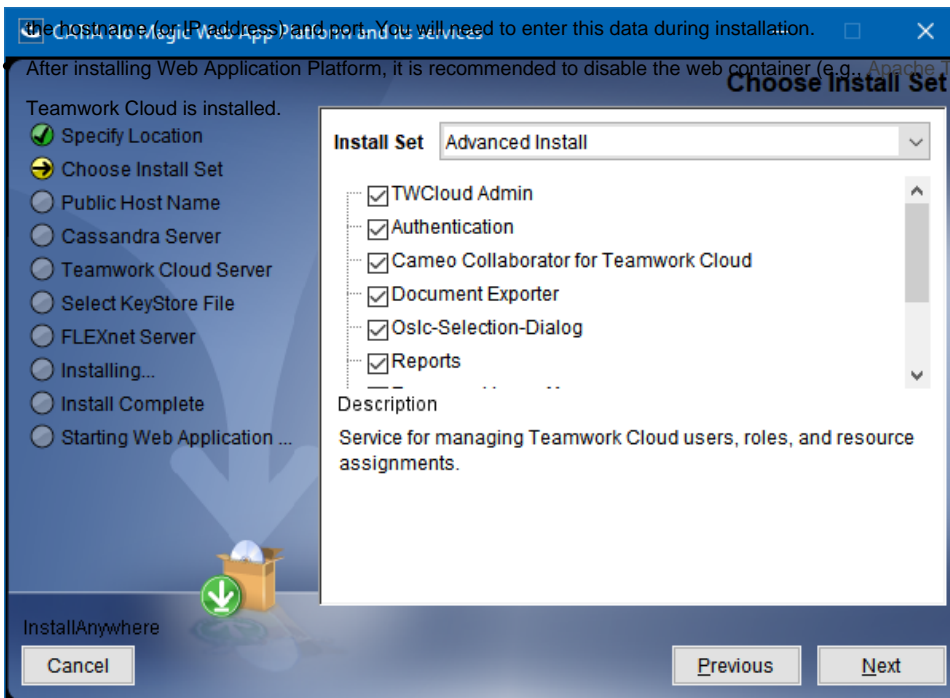
 **Installation prerequisites and other important information:**
Before installing Web Application Platform with services, you need to:

- Have a working instance of [Teamwork Cloud](#).
- If you intend to install the Cameo Collaborator for Teamwork Cloud application, make sure that the [FlexNet license server](#) is installed beforehand.

1. Download the `Web_App_Platform_<version number>_win64.exe` file.
2. Run the `Web_App_Platform_<version number>_win64.exe` file as an administrator to start the installation wizard.
3. Specify the location where you want to install the Web Application Platform in one of the following ways:
 - Use the default location suggested in the **Where would you like to install?** box.
 - Click **Choose** and select a location on your machine.

Before starting the installation, you should know the following:

3. Click **Next**.
4. Select the **Advanced Install** Web Application Platform and Teamwork Cloud on different machines.
5. Select the checkboxes next to the services you want to install and click **Next**.
 - Before installing Web Application Platform, make sure you know Teamwork Cloud, Authentication server, and FLEXnet server data, such as

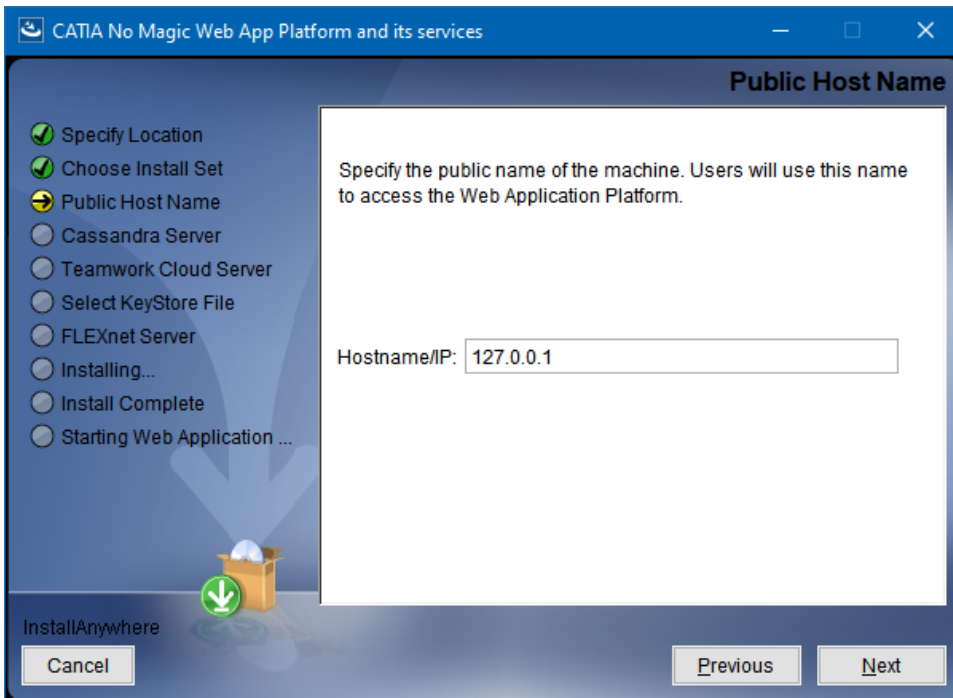


Tip

Click the service name to read its description at the bottom of the installation wizard or read the service documentation listed below:

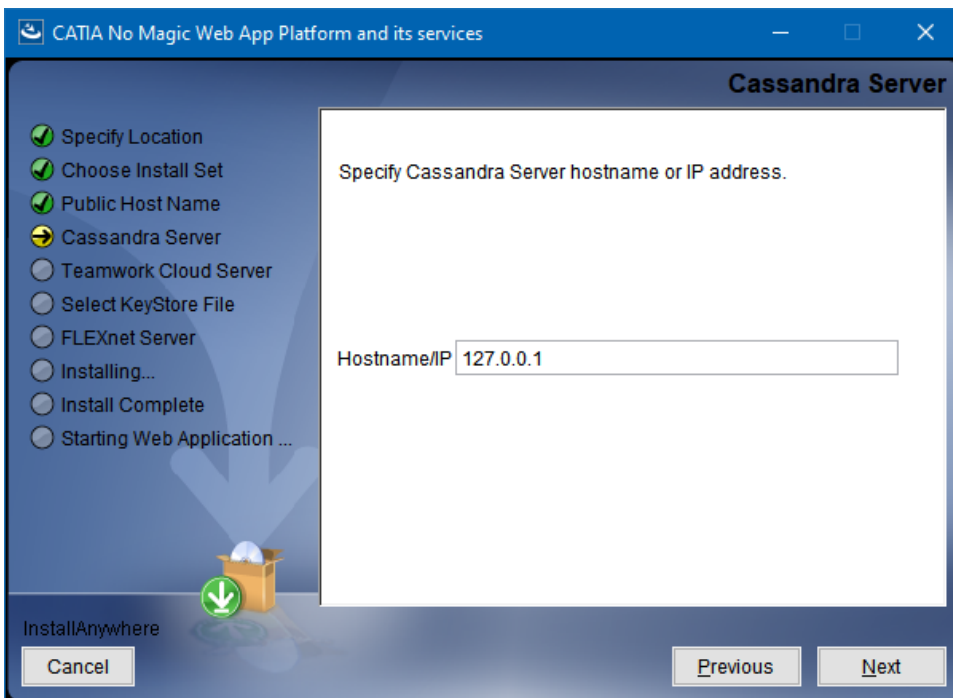
- [Teamwork Cloud Admin](#)
- [Authentication](#)
- [Cameo Collaborator for Teamwork Cloud](#)
- [Document Exporter](#)
- [Oslc-Selection-Dialog](#)
- [Reports](#)
- [Resource Usage Map](#)
- [Resources](#)
- [Simulation](#)
- [WebApp](#)

6. Specify the public hostname (or IP address) of the machine and click **Next**.



The dialog box is titled "CATIA No Magic Web App Platform and its services" and "Public Host Name". On the left, a list of steps includes "Specify Location", "Choose Install Set", "Public Host Name" (highlighted with a yellow arrow), "Cassandra Server", "Teamwork Cloud Server", "Select KeyStore File", "FLEXnet Server", "Installing...", "Install Complete", and "Starting Web Application ...". The main area contains the text "Specify the public name of the machine. Users will use this name to access the Web Application Platform." and a text field labeled "Hostname/IP:" with the value "127.0.0.1". At the bottom, there are "Cancel", "Previous", and "Next" buttons. A green download icon and a box with a white ball are also visible.

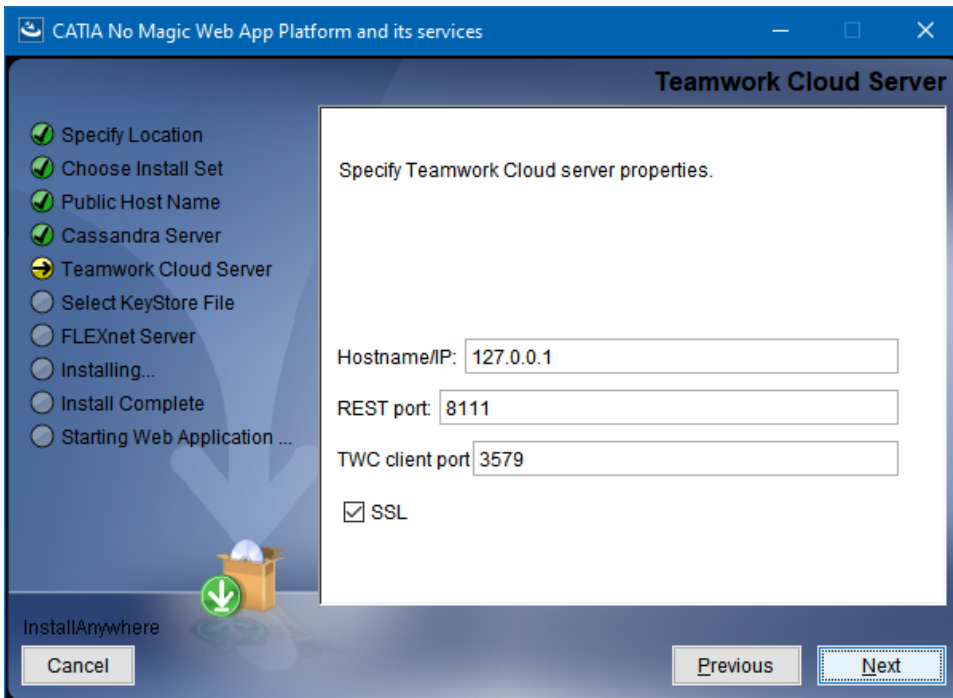
7. Specify the hostname (or IP address) of the Cassandra server and click **Next**.



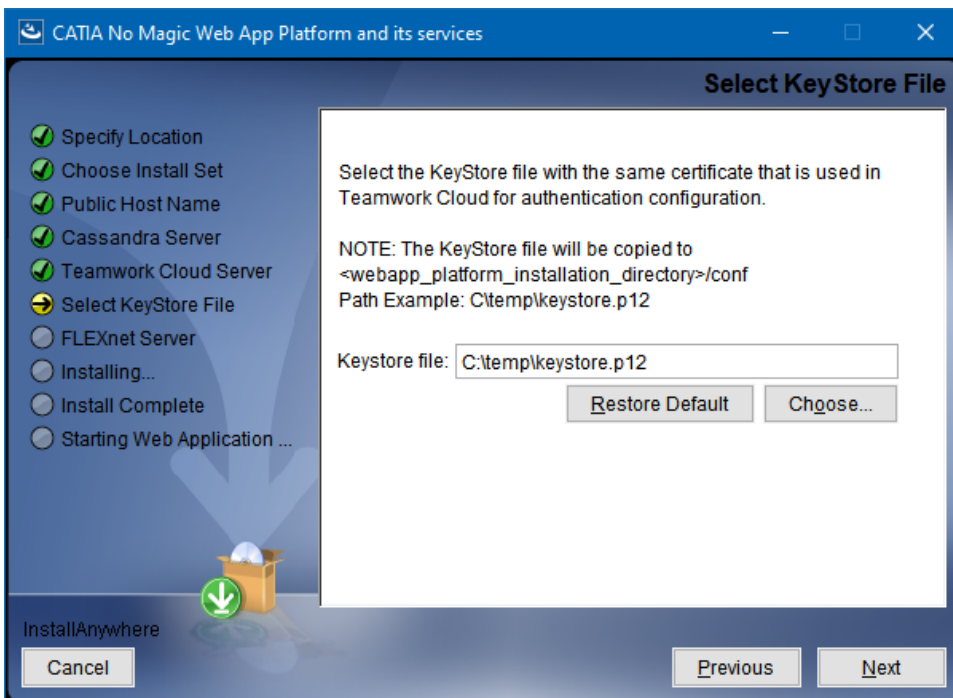
The dialog box is titled "CATIA No Magic Web App Platform and its services" and "Cassandra Server". On the left, a list of steps includes "Specify Location", "Choose Install Set", "Public Host Name", "Cassandra Server" (highlighted with a yellow arrow), "Teamwork Cloud Server", "Select KeyStore File", "FLEXnet Server", "Installing...", "Install Complete", and "Starting Web Application ...". The main area contains the text "Specify Cassandra Server hostname or IP address." and a text field labeled "Hostname/IP:" with the value "127.0.0.1". At the bottom, there are "Cancel", "Previous", and "Next" buttons. A green download icon and a box with a white ball are also visible.

8. Specify the Teamwork Cloud hostname (or IP address), REST API port, and client API port in the appropriate boxes.

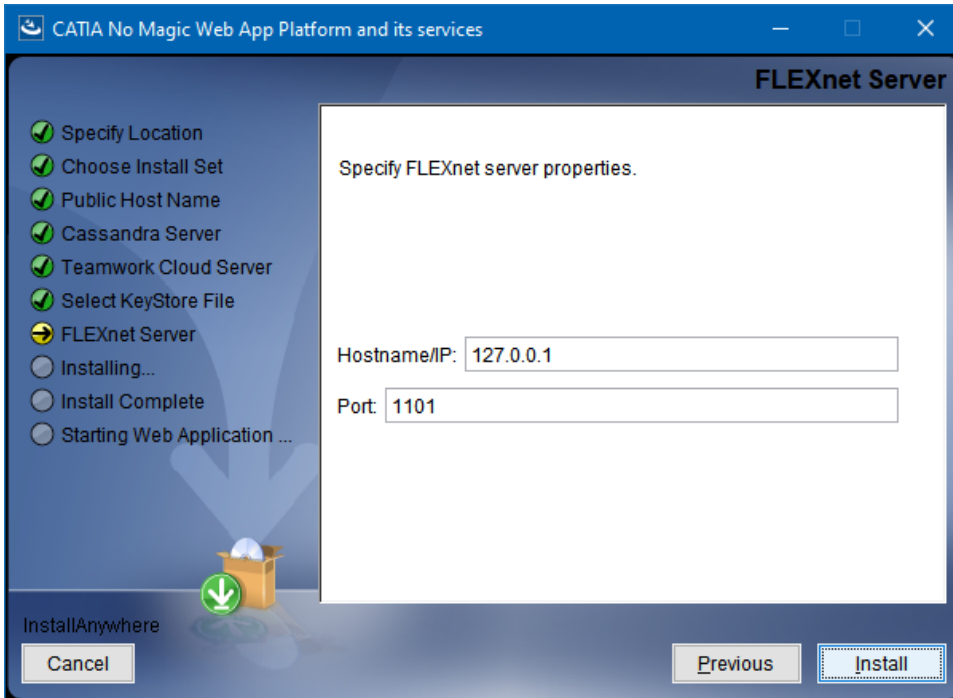
9. If your Teamwork Cloud instance uses SSL certificates, select the **SSL** check box.



10. Click **Next**.
11. Specify the KeyStore file with the same certificate that is used in Teamwork Cloud for authentication configuration and click **Next**.



12. Specify the FLEXnet server hostname (or IP address) and port in the appropriate boxes and click **Install**.



13. When you get the notification that Web Application Platform is successfully installed, click **Next**.
14. If you want to start Web Application Platform after exiting the installation wizard, leave the **Start Zookeeper and WebApp as a service** check box selected. Otherwise, clear the check box.
15. Click **Done**.
16. When the installation is finished, update the **authentication.redirect.uri.whitelist** property in the *authserver.properties* file by adding the Web Application Platform address *http(s)://<domain_name>:<port>/webapp* as its value.
17. If you chose to install Came Collaborator for Teamwork Cloud, [apply the Cameo Collaborator license](#).

Web Application Platform is now installed with the selected services and started if you choose this option in step 15. To access Web Application Platform, open a web browser and go to *http(s)://<domain_name>:<port>/webapp*. By default, the Web Application Platform uses port 8443.



Starting Web Application Platform manually

If you want to [start Web Application Platform manually](#), start Zookeeper first and then start Web Application Platform.

Related pages

- [Installing Web Application Platform on Linux with GUI](#)
- [Installing Web Application Platform manually](#)