

2022x Refresh1 Version News

Magic Cyber Systems Engineer

Released on: November 18, 2022

The 2022x Refresh1 release introduces several improvements to Item Flow management. These include an option to select which diagrams containing elements that realize Item Flows to update so they show the newly created flows. Also, a quick way to show/hide flowing items in a diagram, see the element type representation in the Item Flow Direction selection in the Create/Edit Item Flow wizard and auto-removal of not realized Item Flows. In addition, you can now perform the Requirements verification analysis in the Instance table.

The 2022x Refresh1 version brings a number of server-side simulation functionality improvements, such as a task manager for managing all currently running simulations, the ability to run server-side simulations from the Resources application, live Time Series Charts, and others. In addition, the Watch pane has been improved to allow adding runtime values directly from Internal Block Definition and Parametric Diagrams and editing them.

The 2022x Refresh1 release brings improvements to the Data Markings and Classification Plugin. The plugin is now enhanced with the ability to display Containment Markings, perform Sensitive Element Redaction model transformation, and add Data Markings recursively.

The client-side performance improvements include the Evaluate Operation Performance functionality that will help determine the reasons behind degraded tool performance caused by the execution of expressions. Additionally, the 2022x Refresh1 version provides a separate installation file for ARM architecture-based macOS (i.e., Apple M1) that allows the modeling tool to run up to 2-3 times faster than with the x86 build.

For general modeling, this release presents an improved error notification display, fully featured Structured Expressions dialogs without the separate Standard/Expert UI modes, a new 'UI Font' environment option for changing the default application font, and an ability to create custom project disclaimer configurations.

Additionally, collaborative modeling is now improved with an ability to show custom centralized announcements in the modeling tool informing users on planned server-wide or project-specific events.

Last but not least, the 2022x Refresh1 release introduces the initial Powerby solution – an alternative collaborative modeling environment that is native to the 3DEXPERIENCE platform and provides an additional set of platform-specific capabilities such as advanced configuration management, traceability across disciplines, and others.

To download the latest version, see [Downloading installation files](#). For further information, check the product documentation.

2022x Refresh1 Hot Fix 1 available

2022x Refresh1 Hot Fix 1 is now available for CATIA Magic and No Magic portfolios. It includes Collaboration Powered by the 3DEXPERIENCE

Platform improvements, an improved launcher for MAC OS Ventura, and several bug fixes. [Learn more >>](#)

SysML Features

- Improved Item Flow Management Experience
- Requirements Verification in Instance Tables
- Other Improvements

Simulation Features

- Simulation Task Manager
- Running simulations via the Resources application
- Live Time Series Charts
- Other
- Enhanced Watch Pane

Data Markings and Classification Plugin Improvements

- Display Containment Markings
- Sensitive Element Redaction
- Add Data Markings recursively
- New validation rules

Client-side Performance Improvements

- Evaluate Operation Performance
- Other Improvements

Modeling and Infrastructure

Collaboration

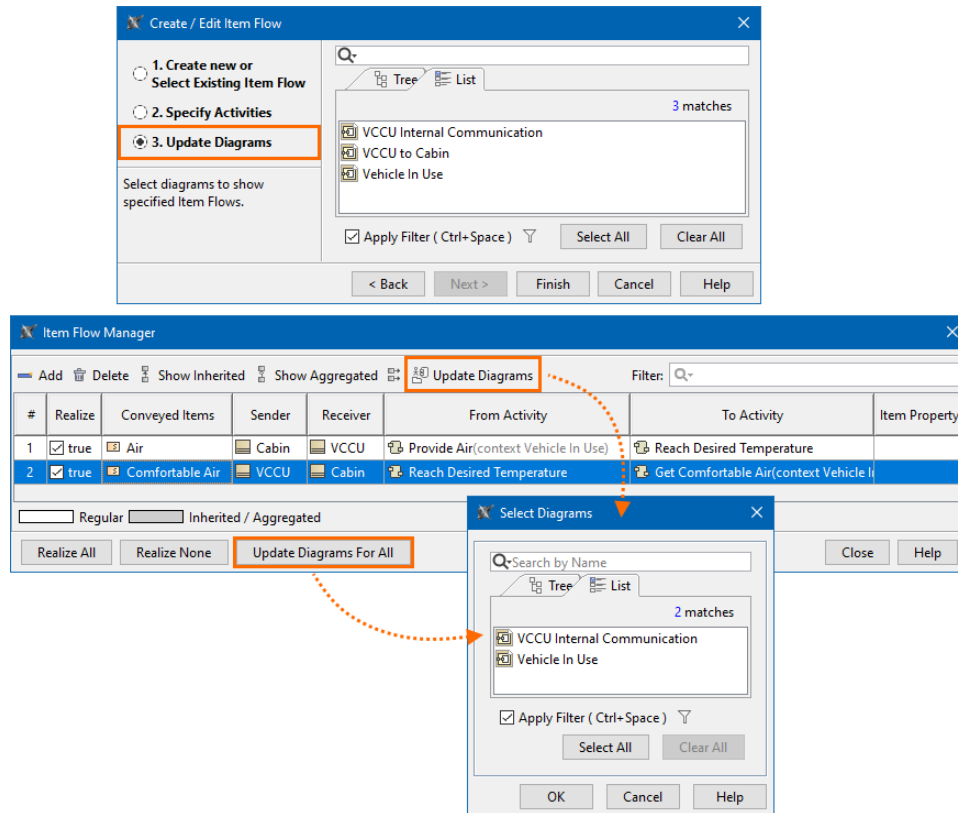
- Teamwork Cloud Announcements
- Collaboration Powered by 3DEXPERIENCE Platform

SysML Features

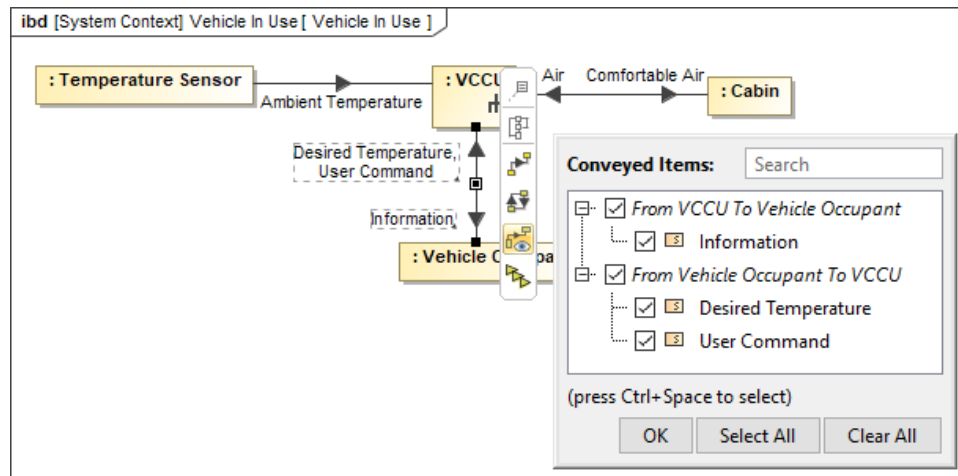
Improved Item Flow Management Experience

SysML Plugin 2022x Refresh1 brings several improvements to Item Flow management, which include:

- **Selecting diagrams to update flows.** From now on, a new Item Flow realization does not end up with unexpected results in existing diagrams (previously, the flow may have been updated or not), as a simple diagram update control mechanism is introduced across the project. The **Item Flow Manager** dialog and the **Create/Edit Item Flow** wizard are now enriched with the ability for you to choose which diagrams with the realizing elements to update.



- **A quick way to show/hide flowing items in a diagram.** Display/hide the flowing items quickly using the dedicated action in the smart manipulator.



- **Element type representation in the Item Flow Direction selection.** Selecting the direction for the Item Flow in the **Create/Edit Item Flow** wizard is now easier as the icons indicating element types are displayed next to the element names, allowing you to identify the sender and receiver more easily.

1. Create new or Select Existing Item Flow

2. Specify Activities

3. Update Diagrams

Item Flow: <NEW>

Direction: From VCCU To Vehicle Occupant

Conveyed Items: Information

Item Property:

☐ Add Item Flow to corresponding relationships

< Back

Next >

Finish

Cancel

Help

- Auto-remove not realized Item Flows.** You can now specify the newly introduced **Remove Not Realized Item Flows** SysML project option to automatically remove Item Flows after the last element that realizes them is deleted. Additionally, you can run the validation to check whether there are any Item Flows in the model that are not realized.

[Learn more about Item Flow management >>](#)

Requirements Verification in Instance Tables

In addition to performing requirements verification in Requirement tables, now you can also carry it out in Instance tables. While the verification in a Requirement table allows you to perform the analysis for a single instance set as the context, the verification in an Instance table allows you to perform the analysis for multiple instances at once via the **Enable Patterns-Based Verification** option. It allows you to analyze multiple instances conveniently and efficiently.

Requirement Table

Criteria

Scope (optional): SUV_REGULAR Requirements

Context (optional): suv_regular_v1 : SUV_REGULAR

Verification Status: ☐ Pass ☐ Fail

#	Name	Text	Property	Bounds	Value	Margin
1	1 SUV_REGULAR Requirements					
2	1.1 Spring Coils	Spring shall have <u>less than 8</u> coils.	suspension.spring.coils : Real	<8	9	-1
3	1.2 Spring Deflection Distance	Spring shall have <u>not more than 108</u> -mm deflection distance.	suspension.spring.deflectionDistance : diameter[metre]	<= 108	100	8
4	1.3 Spring Outer Diameter	The diameter shall be <u>less than 105 mm</u> and <u>more than 95</u> mm.	suspension.spring.outerDiameter : diameter[millimetre]	(95;105)	85	-10

Instance Table

Criteria

Classifier: SUV_REGULAR

Scope (optional): Instances

Filter: Y-

Verification Status: ☐ Pass ☐ Fail

#	Name	suspension.spring.coils	suspension.spring.deflectionDistance	suspension.spring.outerDiameter
1	suv_regular_v2	8	112	80
2	suv_regular_v1	9	100	85
3	suv_regular_v6	9	110	101
4	suv_regular_v5	9	100	101
5	suv_regular_v3	6	108	100
6	suv_regular_v4	7	90	106

Show Full Paths

Save Filter Criteria

Show Detailed Column Name

☒ Enable Patterns-Based Verification

Load Partially >

Display Mode >

Specification Enter

Performing the Requirements verification analysis in the Requirement table vs. the Instance table.

To learn more, watch the following video:

[Learn more about requirements verification in Instance Tables >>](#)

Other Improvements

- When you create an Action directly inside the Structured Activity Node, the **Allocated To** property is specified automatically according to the allocation mode.

[Back to top](#)

Simulation Features

Server-Side Simulation Improvements

Cameo Simulation Toolkit 2022x Refresh1 brings multiple improvements to the server-side simulation capability released in the previous version of the product.

Simulation Task Manager









Now you can conveniently view and manage all server-side simulations in the Task Manager. The Task Manager not only provides the information about all currently running and queued simulations but also allows you to terminate them and open the simulation UI window.

Task manager

Collaborator

Simulation

Active simulations currently running in the background

Project name	Run by	Run	Status	
 CruiseControl_Widgets	 lukmor	Today 11:57 AM	Initialized	 
 Cruise Control	 ingabe	Today 1:33 PM	Queued	 

CLOSE

Simulation Task Manager.



Running simulations via the Resources application

Cameo Simulation Toolkit 2022x Refresh1 introduces a new way of simulating your models on the web. In addition to using REST API, a Python client, or Cameo Collaborator for Teamwork Cloud, you can now run server-side simulations via the Resources web application user interface as well. If a model has a Simulation Configuration and the specified UI, you will be able to run the simulation right from the resource's menu, and the UI window will open once the simulation is started.

Resources

Resource search

Root > Ingos

Name	Classification	Modified by	Modified	Version
 Coffee Machine		ingabe	Sep 2, 2022, 3:00:50 PM	#2
 Cruise Control		ingabe	Sep 5, 2022, 1:32:39	

View resource details

Open in Resource Usage Map

Get project link

Edit resource details

Change assignments

Release locked elements

Generate revisions report

Move resource

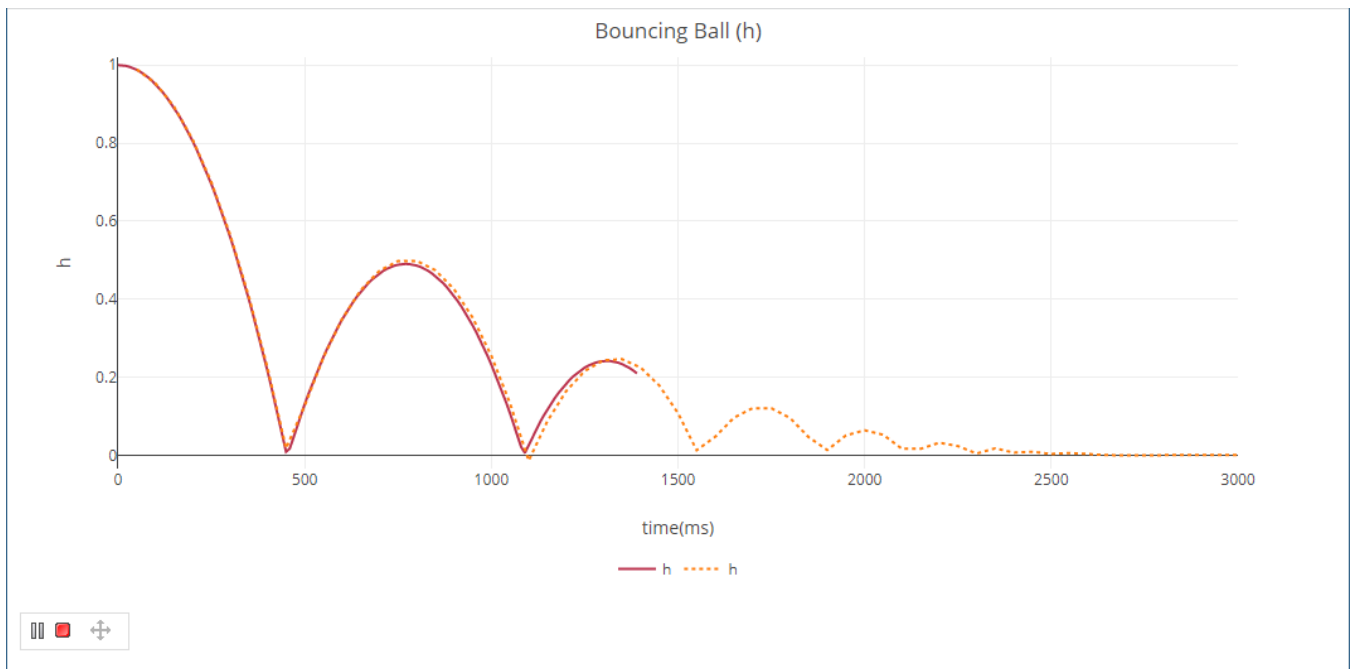
Delete resource

Run simulation

Running simulation via the Resources web application UI.

Live Time Series Charts

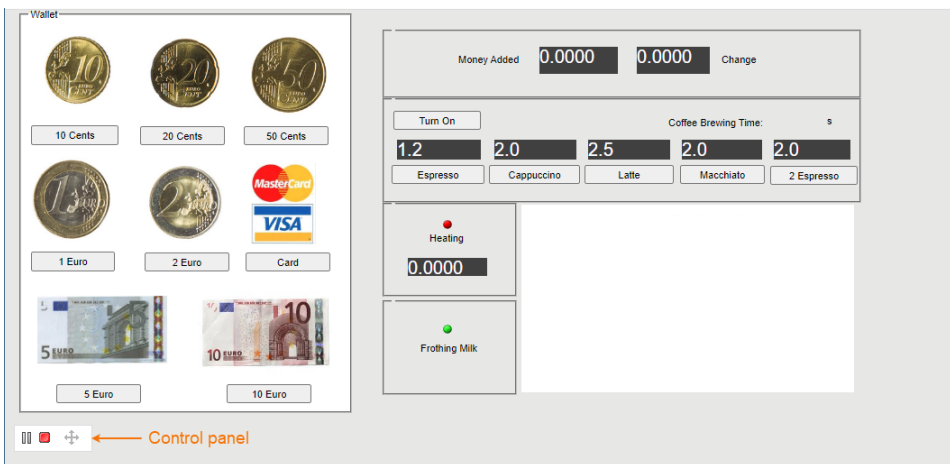
From version 2022x Refresh1, server-side simulation supports live Time Series Charts. Once you start the simulation and the UI window opens, you can view the Time Series plot being updated in real-time as shown below.



Live Time Series Chart.

Other

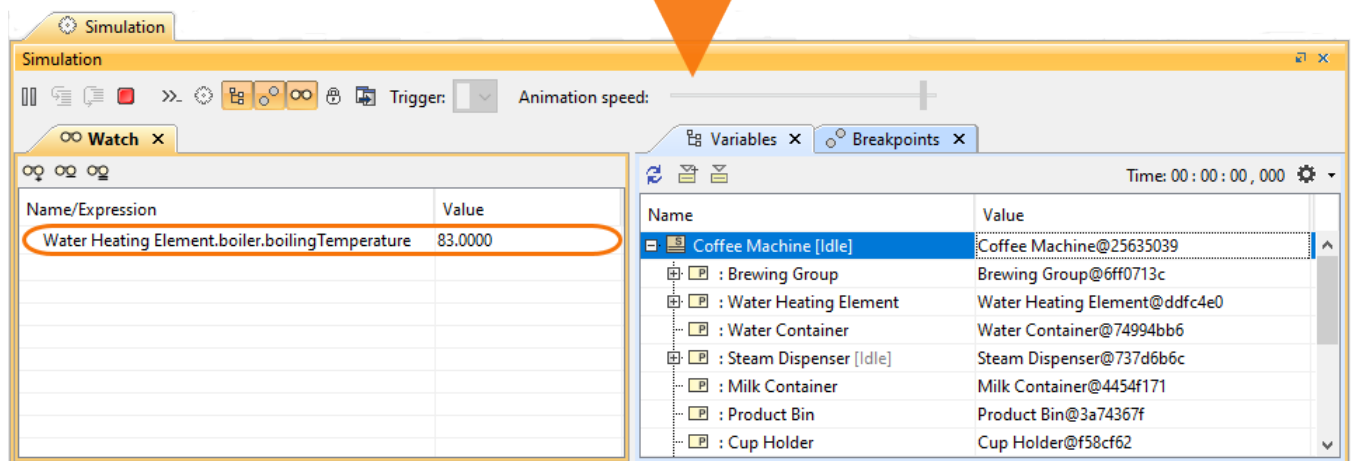
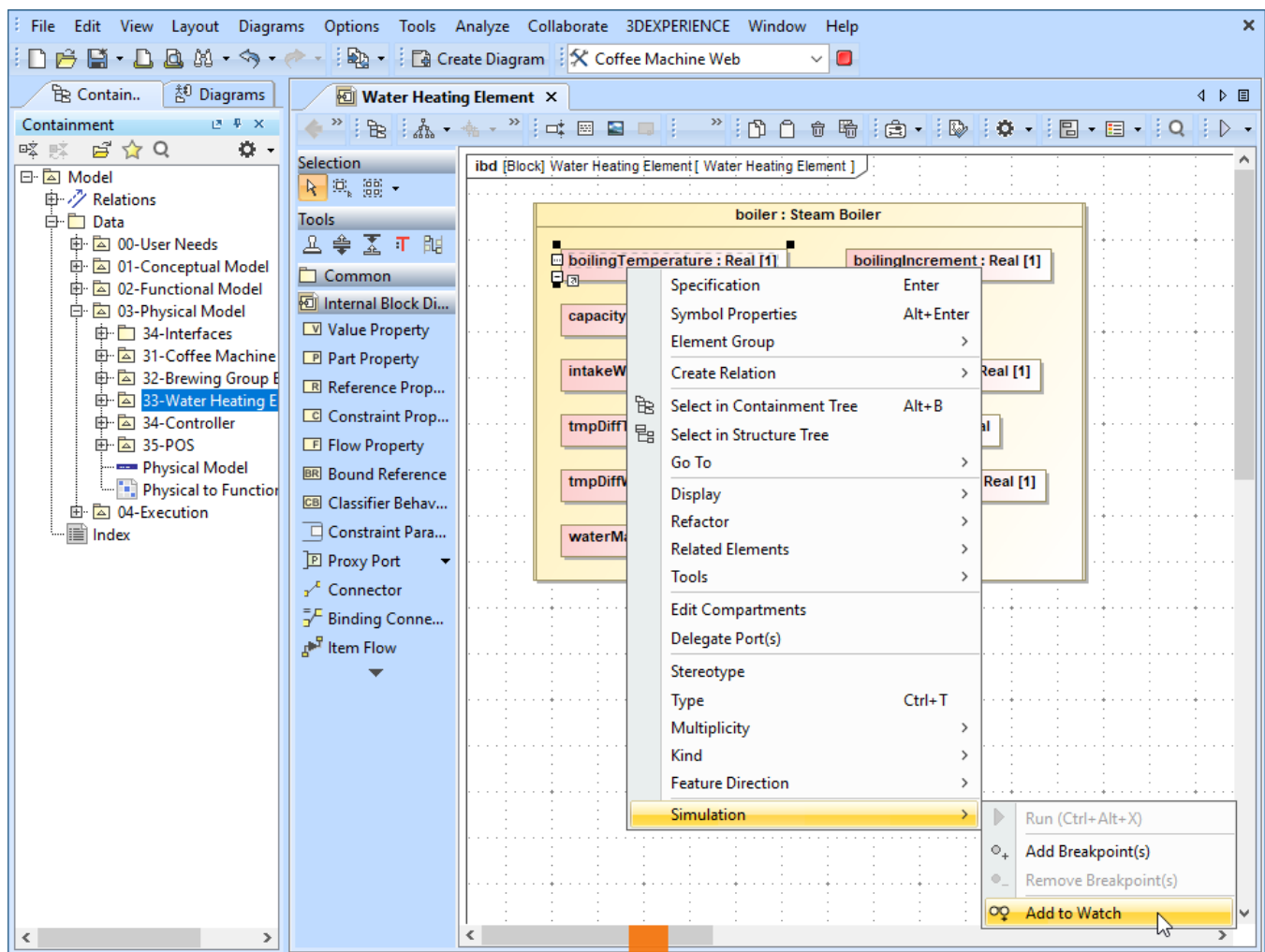
- When you simulate a model with a UI mockup or Time Series chart, the UI window that opens during model execution now has a Control panel allowing you to start, pause, resume, or terminate the simulation.



- Now the Timeline and Time Series Chart data can be exported to the HTML/CSV format and stored in the Documentation property of the result Instance Specification.
- Teamwork Cloud has a new Simulation Manager role which allows you to get and review simulation results as well as terminate the simulations executed by other users.

Enhanced Watch Pane

The Watch pane has been improved to allow adding runtime values directly from Internal Block Definition and Parametric Diagrams. In addition, you can now edit the values added to the Watch pane and see how the simulation results change accordingly.



Adding runtime values to the Watch pane directly from an Internal Block Diagram.

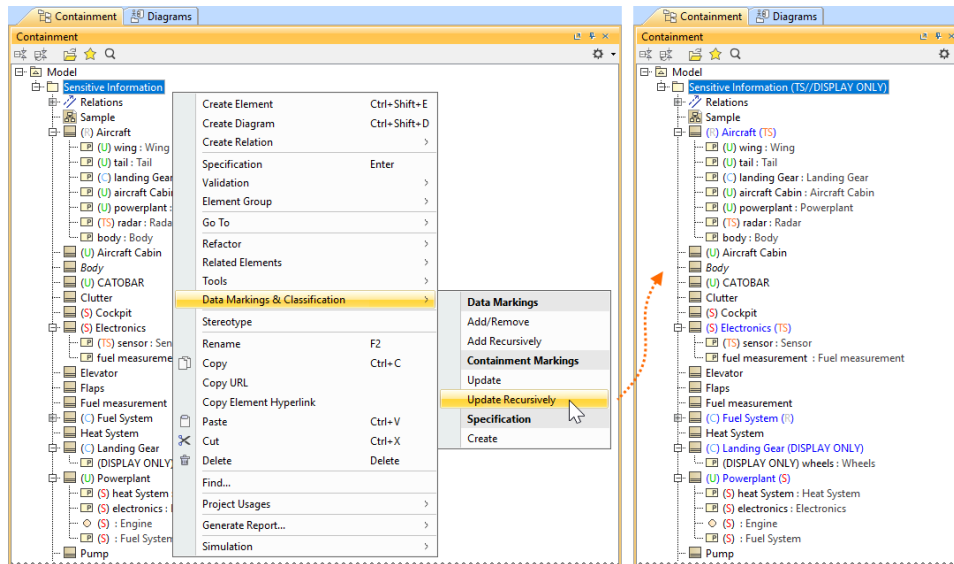
[Back to top](#)

Data Markings and Classification Plugin Improvements

The 2022x Refresh1 version introduces new and improved functionality in the **Data Markings and Classification Plugin**, including:

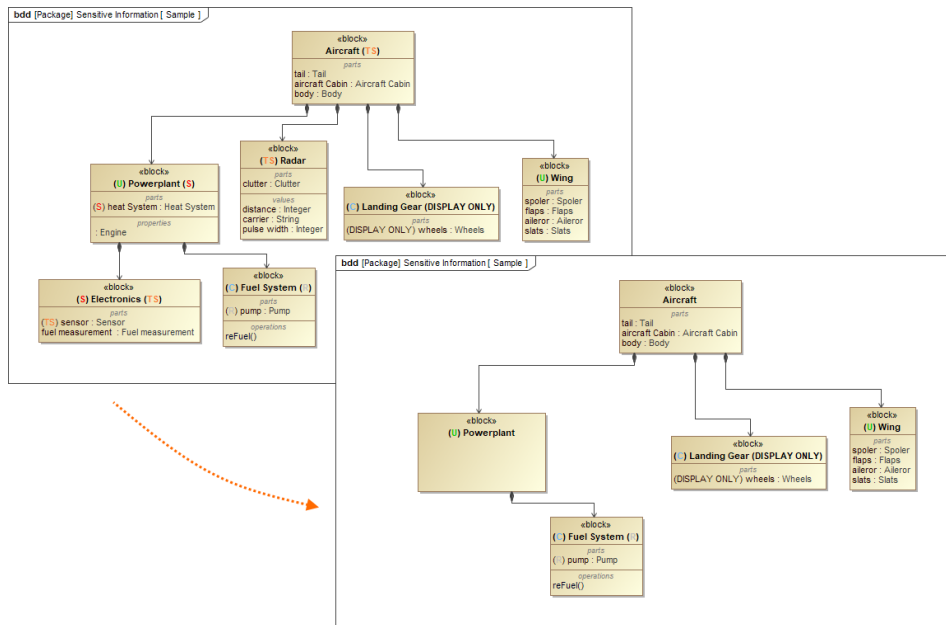
- **Display Containment Markings.** You can now choose to have Containment Markings that are displayed on the owner element, indicating the owned elements' Data Markings. They are displayed in parentheses as postfixes next to the element name. Use the newly introduced **Element**

Types with Containment Markings project option to specify which element types can have Containment Markings displayed on them. This feature allows you to quickly see the owned elements' Data Markings by simply glancing at the owner element. [Learn more about Containment Markings >>](#)



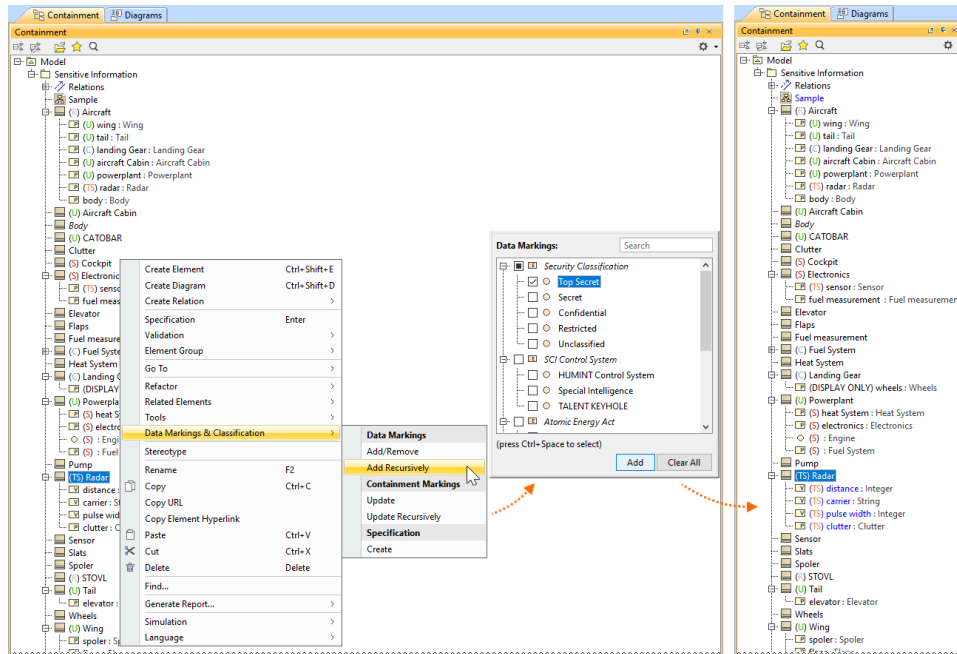
The Containment Markings are updated recursively for the package *Sensitive Information* and its contained elements.

- **Sensitive Element Redaction.** The **Sensitive Element Redaction** model transformation allows you to narrow down the full model by removing elements with the selected Data Markings. Controlling what elements should constitute the model based on their Data Markings allows you to provide a redacted model to suppliers who can only have access to some model elements. [Learn more about Sensitive Element Redaction >>](#)



A model transformed via Sensitive Element Redaction by removing elements with *Secret (S)* and *Top Secret (TS)* Data Markings.

- **Add Data Markings recursively.** From now on, in addition to adding Data Markings to individual elements, you can add them recursively to multiple project elements via the owner element. Use the newly introduced **Sensitive Element Types** project option to specify which element types can have Data Markings added to them recursively. This feature allows you to add Data Markings to multiple elements conveniently and efficiently. [Learn more about adding Data Markings recursively >>](#)



Adding Data Markings recursively to the Block *Radar* and its Value and Part Properties.

- **New validation rules.** The new features listed above are supported with additional validation rules.
 - The **Invalid Containment Markings** rule checks if the Containment Markings match the Data Markings of owned elements.
 - The **Missing Data Marking** checks if there are elements that are specified to have Data Markings in the Sensitive Element Types project option but do not have any Data Markings added.
 - When a property is typed by a sensitive element, the **Inconsistent Data Markings (Property)** validation rule checks whether the property has a matching Data Marking or if the sensitivity level of the added Data Marking is not lower than the sensitivity level of the Data Marking added to the type.
- [Learn more about validation rules >>](#)

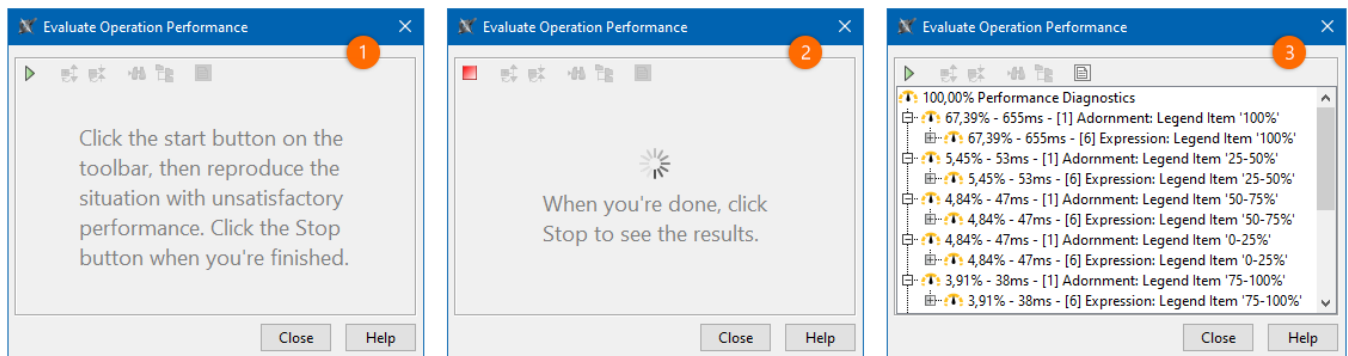
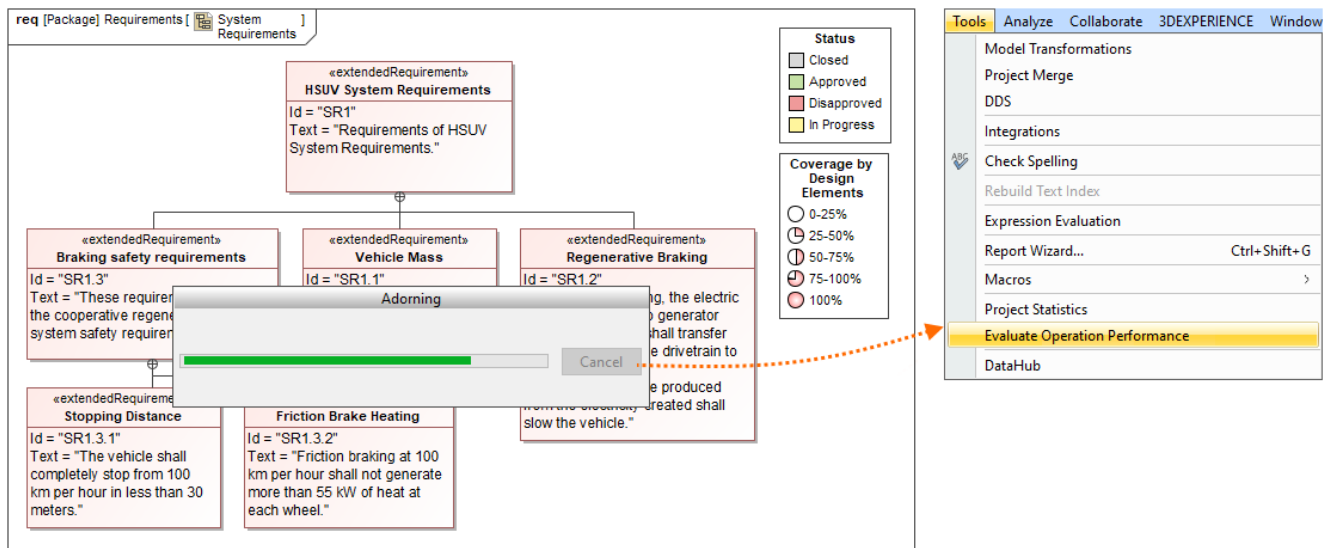
To learn more, watch the following video:

[Back to top](#)

Client-side Performance Improvements

Evaluate Operation Performance

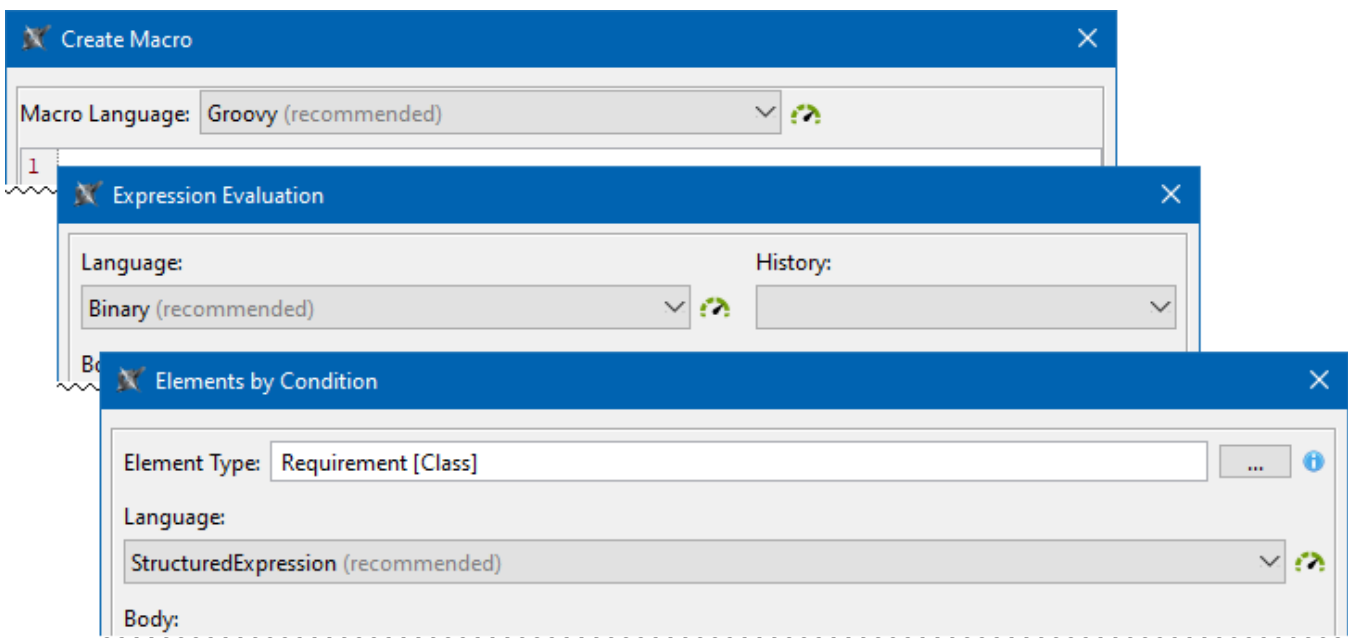
If you are tired of seeing progress bars while performing various operations in the tool, you can now use the Evaluate Operation Performance functionality, which allows you to view performance diagnostics that help determine the reasons behind degraded tool performance if it is caused by the execution of expressions (e.g., derived properties, smart packages, legends, validation rules) defined in the model. You can also analyze the building of matrixes and tables.



Adorning diagram symbols operation performance evaluation.

To learn more, watch the following video:

Additionally, you can now see the language recommendations based on their performance. The recommendations are visible via the 'recommended' indication and the performance indicator icon in the language selection menu. The icon color reflects the performance: green for fast (Binary, Structured Expression, Groovy), yellow for medium, and red for slow. It allows you to see the languages' performance when choosing one for your operations and make an informed decision.



[Learn more about operation performance evaluation >>](#)

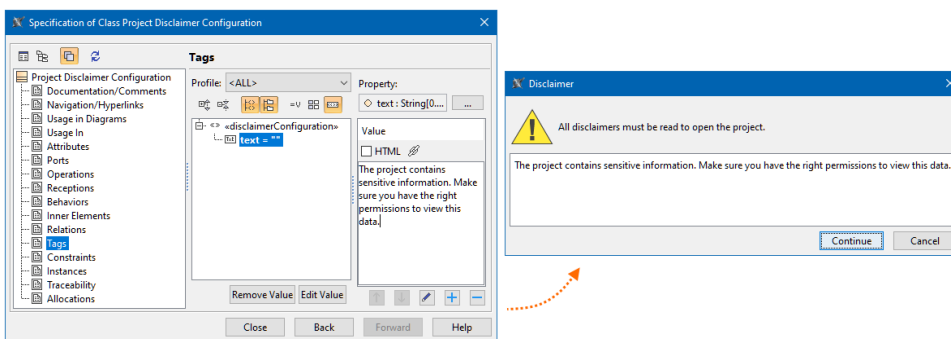
Other Improvements

- **Installation file for Apple M1/M2.** 2022x Refresh1 release provides two different installation files for macOS based on its processor architecture: in addition to the x86 one, now there is also a separate installation file for the one based on ARM (i.e., Apple M1). It is bundled with ARM architecture Java. The modeling tool runs up to 2-3 times faster with ARM architecture Java on Apple M1.

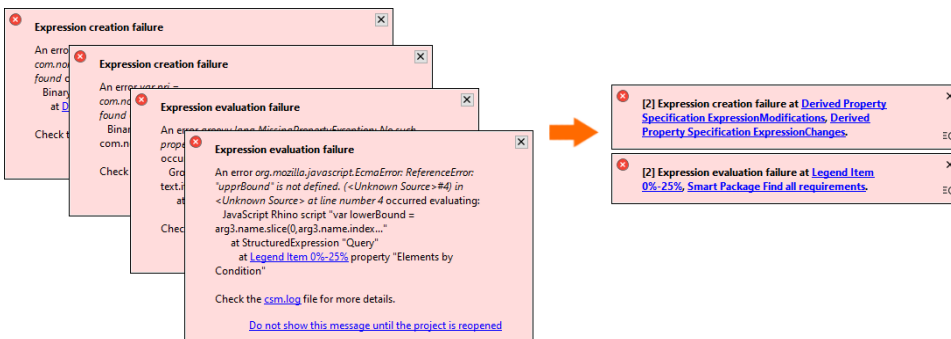
[Back to top](#)

Modeling and Infrastructure

- A new **UI Font** environment option is now available, allowing you to change the default font the application should be displayed in. This change also supports the correct display of non-Latin scripts.
- The Standard/Expert UI modes are now removed from the Structured Expressions dialogs. Instead, the dialogs are now fully featured by default without the need to switch between modes.
- From now on, you can create project disclaimer configurations to display custom disclaimers upon opening a project. The disclaimers can contain any information you want project users to be aware of before opening the project. [Learn more about project disclaimer configurations >>](#)



- Instead of displaying individual error notifications of the same type, they are now grouped based on their type (expression creation failure, expression evaluation failure, model change and diagram load in expressions), allowing a more compact display of notifications (see the image below).

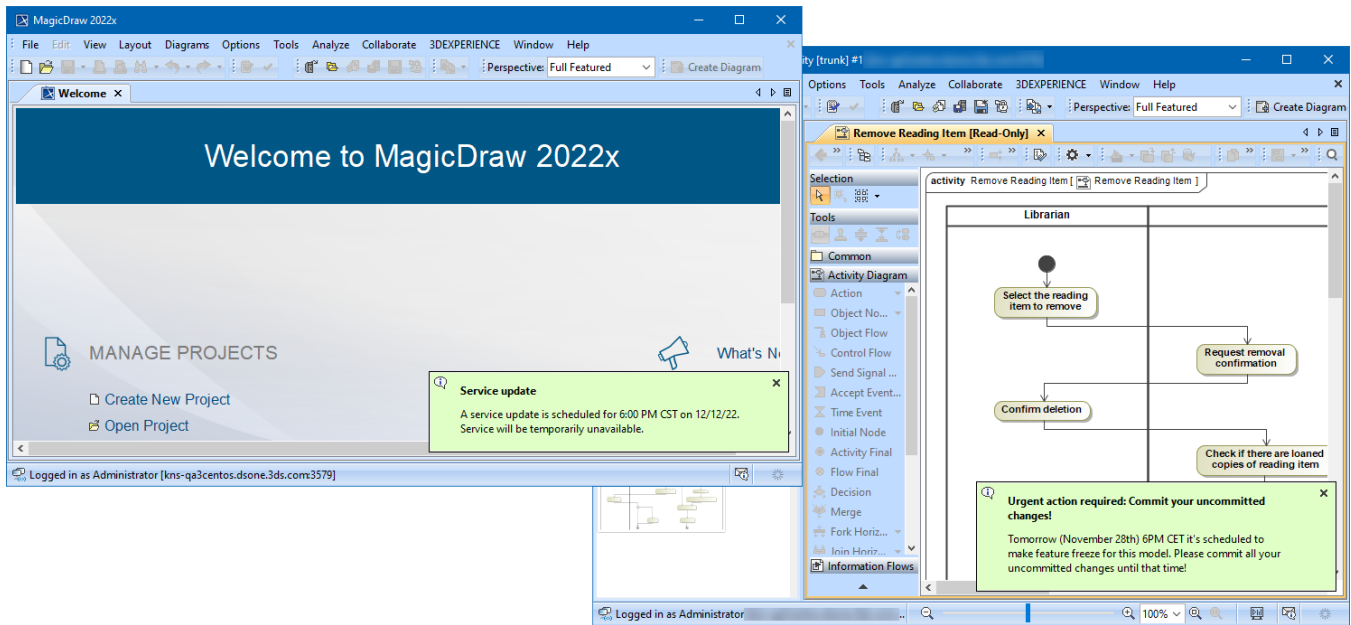


[Back to top](#)

Collaboration

Teamwork Cloud Announcements

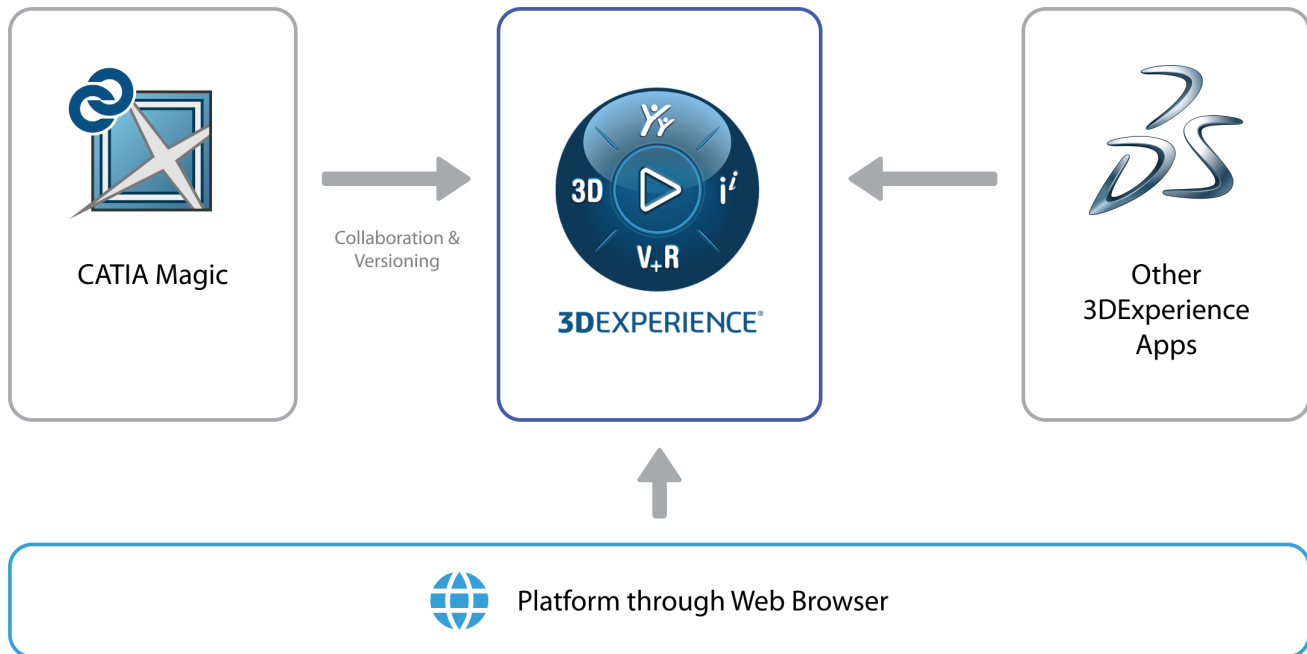
The 2022x Refresh1 version of the modeling tool can show custom announcements to users. [Managed through Teamwork Cloud Admin](#), these announcements can contain information on server-wide upgrades, project-specific deadlines, or any other important news. An announcement is displayed in the modeling tool UI until a user acknowledges it by closing.



Teamwork Cloud announcement displayed on the Welcome screen of a modeling tool and a specific project.

Collaboration Powered by 3DEXPERIENCE Platform

We introduce Power'by – a new way to collaborate on models within the 3DEXPERIENCE platform environment. For programs and projects requiring models to span across multiple engineering disciplines, Power'by allows leveraging native 3DEXPERIENCE platform capabilities, such as access control, advanced configuration management, traceability through the digital thread, and many others. The initial release aims to provide core collaboration features: storing and loading projects, working on them simultaneously, and committing and updating changes as part of configuration management control.



[Back to top](#)

[Version news of servers and plugins >>](#)