

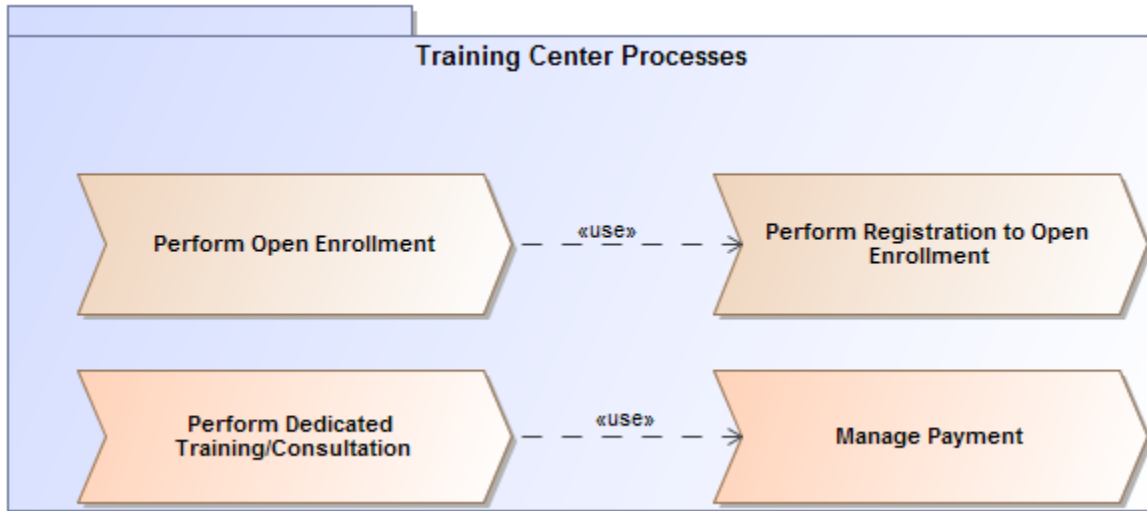
# Process Definition Diagram

## Description

A Process Definition diagram is a tool for initial process analysis. The diagram allows you to draw business processes, group them into packages, and define the relations between those processes.

When the initial process definition has been completed, a process flow can be provided in a BPMN Process diagram, which can be created for each process.

## Example



Process Definition diagram

## Related elements

- [Package](#)
- [Relationships](#)