



Setting project options

Use the **Project Options** dialog to do the following:

- Specify general project-specific options.
- Specify summarizing information (for example, diagram author, diagram creation and modification dates) that will be displayed on each diagram.
- Specify symbol property styles for shapes, paths, diagrams, and stereotypes within the project.

 For the instructions how to create, edit, clone, import /export, or remove symbol property styles, please refer to Style Engine.

- Change default element property values.

 For the instructions about setting the default element property values, please refer to Default Property Values.

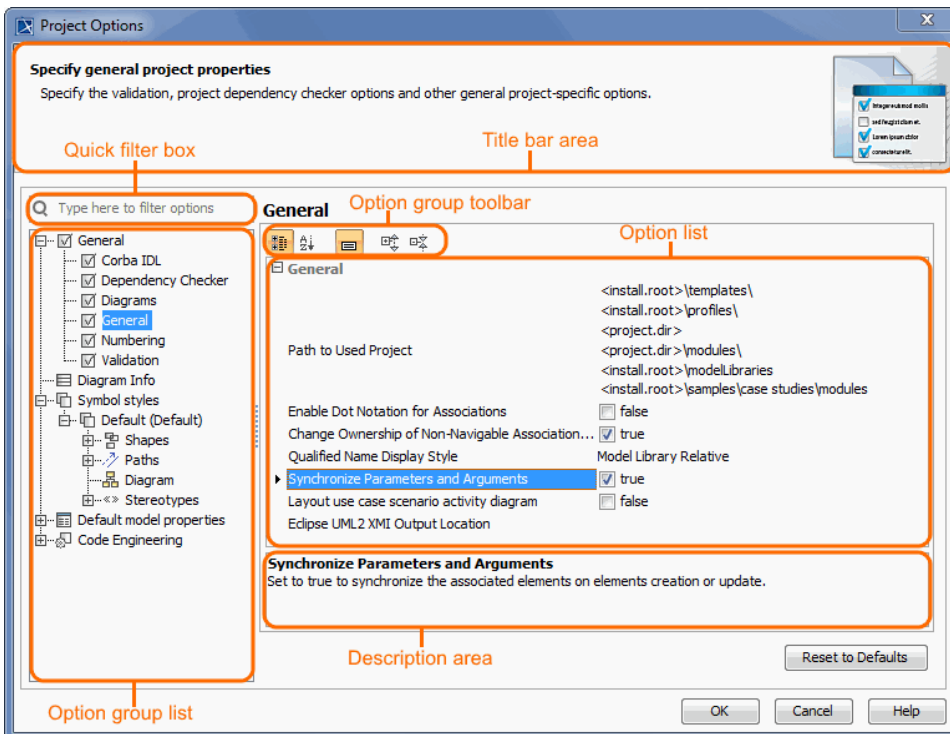
- Set general code generation or code reversing options as well as code formatting styles for selected programming languages.

The **Project Options** dialog includes option groups, each designated for one of the above mentioned features and containing lists of corresponding options. Groups are represented using the tree structure.

An option value can be simply changed by typing a new value, setting a value to true / false, or selecting a value from the list. Click the **Reset to Defaults** button to restore default option values.

To open the **Project Options** dialog

- From the **Options** menu, select **Project**.



Changing options

In order to change a desired project option, first of all you need to find it in the **Project Options** dialog. These options are grouped into categories to make it easier for you to locate them. Use the [quick filter](#) to find the desired option in the list. Filtering is performed in the all available options, not only in the selected option group.

To make sure you selected the right option, first read its description and see if the effect of changing the option value is what you expect to be done.



Make sure that the Show Description mode is turned on in the **Project Options** dialog.
To turn the Show Description mode on or off, click the Show Description button on the following toolbar in the **Project Options** dialog.



To read the option description

1. Click an option that you want to change.
2. Read the option description in the area below the options list.

Project Options



The table below displays the default environment options. Additional options may appear based on installed plugins.

Option	Default value	Value options	Description
General			
Browser			
Group Composite Instances	true	true/false	Set to true to show composite instances under their owning instances instead of the actual owning package in the Containment tree.
Corba IDL			
CORBA Interfaces implemented as	UML Interface	UML Class UML Interface	Specify whether the CORBA Interfaces should be implemented as a UML Class or UML Interface.
Dependency Checker			
Check for Cyclic Dependencies among Used Projects	false	true/false	Set to true to check for cyclic dependencies during the project export or package share.
Dependency Checker Severity Level	Info	Info Warning Error	Specify the dependency checker severity. The dependencies of the specified and higher severity will be displayed.
Ignore Standard /System Profiles	true	true/false	Set to true to exclude standard/system profiles when checking for cyclic dependencies in used projects.
Diagrams			
Use i18n property for text rendering in the diagrams	true	true/false	Set to false to disable the i18n property. If the i18n property is set to false, all text symbols that are displayed in the diagram pane (for example, text which is displayed on the symbol) will not be distorted at any zoom ratio.
Display All Pins in Diagrams	true	true/false	Set to true to always display pin elements in the diagrams. Note: if this option is set to true and the pin symbol is deleted from the diagram, then the corresponding pin element will be deleted from the model, too.
Display All Activity Parameter Nodes in Diagrams	true	true/false	Set to true to always display activity parameter node elements in the diagrams. Note: if this option is set to true and the activity parameter node symbol is deleted from the diagram, then the corresponding activity parameter node element will be deleted from the model, too.
Use different Join /Fork and Decision /Merge notations	true	true/false	Use different notations to draw Join/Fork and Decision/Merge.
Diagram Context	Create Automatically	Create Automatically Do Not Create	A new diagram context element will be created automatically when the new diagram owned by a Package is created. This option is valid for all diagrams based on a Composite Structure Diagram.
Apply Image To	Type and Notify	Type and Notify Type Property	(This is personal property, meaning its value is unique for each user). Specify whether to apply an image to the property or its type when dragging or selecting an image from the Image Library or other resource. This option is available when the Type Selection Mode is switched on.

Use Aspects	false	true/false	Set to true to use definable diagram aspects in the project.
Ignored Aspects	-	multi-selection	Specify the aspects which should not be used in the project.
Suspend Auto-Resizing of Shapes	true	true/false	Set to true to keep the original size of shapes while editing the model by cutting text to fit inside the shape. You can use the Resize to Fit Content command (a small black square on the bottom line of the selected shape) to adjust the size of the shape to fit the content completely.
Suspend Auto-Displaying of Labels	true	true/false	Set to true if you do not want to automatically show labels on the diagram pane while editing the model. You can use the Show Suspended Labels command (a small black square on the selected path) to show suspended labels on the diagram pane.
Highlight Suspended Symbols	true	true/false	Set to true to highlight suspended symbols with not completely visible content.
Time Limit to Build Diagram	60	Real	Specify the maximum time (in seconds) allotted for diagram building while exporting a diagram. If the time limit is exceeded, the diagram is not exported. Set to 0 to export the diagram without the time limit.
Image Height Limit	10000	Real	Specify the maximum image height (in pixels) for diagram export. If the height limit is exceeded, the exported diagram is cropped, or the diagram is not exported at all, depending on the selected preference. Set to 0 to export the diagram without the image height limit.
Image Width Limit	10000	Real	Specify the maximum image width (in pixels) for diagram export. If the width limit is exceeded, the exported diagram is cropped, or the diagram is not exported at all, depending on the selected preference. Set to 0 to export the diagram without the image width limit.
Export Preference When Limits Exceeded	Export Cropped Diagram	Export Cropped Diagram Do Not Export	Specify the diagram export preference if the diagram image height and/or width limits are exceeded.
Element References			
Default Element Hyperlink Text Display Mode	Name	Name Icon + Representation text Representation text Custom text	Specify how the hyperlink to the model element is displayed by default. Select 'Name' to display the element name from its Specification window. The 'Representation text' displays the full element title, visible in the Containment tree. Choose the 'Icon+Representation text' to display the element icon together with the full element title. Select 'Custom text' to type your own text.
Default Element Hyperlink Text Update Mode	Automatically updated	Automatically updated Automatically checked Manually checked Do not update	Specify when the hyperlink to the model element will be updated by default if the referenced element and the hyperlink become inconsistent. Select 'Automatically updated' to update hyperlink text or the referenced element name automatically. Choose 'Automatically checked' to enable active validation rules which check if the hyperlink and the referenced element are coherent. The 'Manually checked' option allows you to run validation manually, while the 'Do not update' option means that validation will not find any inconsistencies.
General			
Path to Used Project	<project.dir> <install.root>\profiles <install.root>\modelLibraries	Custom	Specify the paths to store used projects and extension elements.
Enable Dot Notation for Associations	false	true/false	Set to true to use the dot notation for associations. If the dot notation is applied to an association, the association end is decorated with the dot if that end is owned by a classifier. The absence of the dot signifies ownership by the association.
Change Ownership of Non-Navigable Association End when Changing Navigability	true	true/false	Set to true to automatically change ownership of the non-navigable association end when the navigability of the association was changed.

Qualified Name Display Style	Model Library Relative	Absolute Model Relative Model Library Relative Model or Model Library Relative	Specify the mode of displaying the element qualified name. If the Model Library Relative mode is specified, it means that the element's full qualified name hierarchy is displayed on the shape, starting from the
Synchronize Parameters and Arguments	true	true/false	Set to true to synchronize the associated elements on elements creation or update.
Layout Template Creation Mode	Definition	Usage Definition	Specify the mode layout template diagram creation. Choose 'Definition' to create the layout templates as a class diagram. Choose 'Usage' to create the layout templates as a composite structure diagram.
Layout Use Case Scenario Activity Diagram	false	true/false	Set to true to automatically lay out the activity diagram of the use case scenario every time it is opened.
Decimal Places	4	Real	Specify the maximum number of decimal places to be used when displaying the real number in tables and element Specification windows.
Eclipse UML2 XMI Output Location	-	Custom	Specify the path to the location where the exported Eclipse UML2 XMI will be saved.
Use Glossary	true	true/false	Set to true to use the glossary functionality: mark terms in the text, create terms directly from the text, or reuse them in newly created texts.
Show Excel/CSV Import Migration Message	true	true/false	If true, the Migration message is shown each time when importing Excel/CSV mapping created with the CSV Import plugin.
Tooltips Style	Do Not Show	Do Not Show Show Element Name Show Element Documentation	(This is personal property, meaning its value is unique for each user). Specify the mode to display the element tooltip.
Legends			
Filtering Preference	Show	Show Hide	Specify the default filtering preference for Legends.
Use Legends	true	true/false	Set to true to enable Legends adorning and filtering functionalities across all tables and diagrams with symbols in the project.
Ignored Legends	-	multi-selection	Specify the Legends which should not be used in the project.
Numbering			
Use Element Auto-Number	false	true/false	Element auto-numbering option to control (turn off or turn on) element numbering functionality for the whole project.
Display Element Number	false	true/false	The 'Display Element Number' option allows to turn on or turn off the representation of the element number.
Lock Element Auto-Numbering	false	true/false	If set to true, the element auto-numbering is locked and cannot be changed.
Check Element Number Uniqueness Including all Properties	false	true/false	Set to true to include the main element number together with all internal element numbers into element uniqueness checking.
Check Element Number Uniqueness	true	true/false	Set to true to check element number uniqueness.
Check Element Number Uniqueness in:	-	multi-selection	Element number uniqueness options allow specifying where your element number should be unique.
Suspect Links			

Enable Tracking	false	true/false	Set to true to start tracking suspect links.
Track Deprecated Elements	true	true/false	Set to true to track element deletions.
Track Links in main Project Only	true	true/false	Set to true to track suspect links in the main project only.
Tracking Scope	-	multi-selection	Select elements whose suspicions should be tracked.
Validation			
Validation Scope	-	multi-selection	Specify the validation scope. The validation scope can be the entire model or some part of it. When the validation is run, each validation rule is evaluated for each suitable element in the validation scope.
Validate only Visible Diagrams	true	true/false	Set to true to validate only elements in one or more visible diagrams.
Exclude Elements from Used Read-Only Project	true	true/false	Set to true to exclude projects used in read-only mode and the elements that exist in these projects. Excluded projects will not be validated.
Mark in Tree and Diagrams	true	true/false	Set to true to highlight the invalid model elements in the browser with a small x symbol. The element symbol will be colored according to the severity level of the problem in the diagram.
Ignored Validation Suites	-	multi-selection	Specify the validation suites which should not be run during the model validation.
Ignored Validation Rules	-	multi-selection	Specify the validation rules which should not be run during the automatic model validation.
Minimal Severity	warning	debug info warning error fatal	Specify the minimal severity. When the validation is running, only the validation rules of the specified and the higher severity level will be run.
Composition Inspection	Standard	Standard Advanced	Select the level of composition inspection in your projects. The Standard inspection searches for issues only in the project, while the Advanced inspection, in addition to the Standard inspection, searches for issues in all the used projects. The inspection runs validation rules which validate the correctness of model integrity and project composition.
Detect Illegal Model References in Shared Projects	true	true/false	Set to true to check for illegal model references in projects. Illegal references are one of the main reasons why recovered elements appear in shared projects.
Ignored Validation Suites	-	multi-selection	Specify the validation suites which should not be run during the passive diagram validation.
Ignored Validation Rules	-	multi-selection	Specify the validation rules which should not be run during the passive diagram validation.
Minimal Severity	warning	debug info warning error fatal	Specify the minimal severity. When passive diagram validation is running, only the validation rules of the specified and the higher severity level will be run.
Diagram Info			
Diagram information shows summarized data in each diagram, e.g. the author, creation and modification dates, etc. Choose the diagram tags in standard mode, their values should be shown in a predefined diagram information table, or choose how diagram information should be represented using the HTML code.			
Symbol styles			
Specify the shape, path, diagram, and stereotype symbol properties. Create, edit, clone, import/export, or remove element display styles. Also, set default styles or apply new styles to existing diagrams.			
Default			
Fill Color	RGB [255, 255, 204]	Custom	Change the fill color of the shape.
Use Fill Color	true	true/false	Shapes are colored on the diagram.
Pen Color	RGB [66, 66, 66]	Custom	Change the color of the path or lines around shapes.
Text Color	RGB [0, 0, 0]	Custom	Change the color of the text.
Line Width	1	Real	Specify the line width of the symbol.

Font	Arial 11	multi-list	Change the font style of the text.
Show Number Tag Name	true	true/false	The option allows you to turn on or turn off the element number tag name on the symbol.
Element Number Display Mode	Before the element name	Above the element name Before the element name Do not display on symbol	The element number display mode option specifies the position on the symbol where the element number should be displayed.
Shapes			
Fill Color	RGB [255, 255, 204]	Custom	Change the fill color of the shape.
Use Fill Color	true	true/false	Shapes are colored on the diagram.
Pen Color	RGB [66, 66, 66]	Custom	Change the color of the path or lines around shapes.
Text Color	RGB [0, 0, 0]	Custom	Change the color of the text.
Line Width	1	Real	Specify the line width of the symbol.
Font	Arial 11	multi-list	Change the font style of the text.
Show Number Tag Name	true	true/false	The option allows you to turn on or turn off the element number tag name on the symbol.
Element Number Display Mode	Before the element name	Above the element name Before the element name Do not display on symbol	The element number display mode option specifies the position on the symbol where the element number should be displayed.
Autosize	false	true/false	Adjusts the size of a symbol to the contained information so that it uses minimum space.
Use Fixed Connection Points	false	true/false	When drawing a path between shapes, the end of the path is connected to the fixed point of the shape.
Suspend Auto-Resizing of Shape	Same as Diagram	Same as Diagram true false	Set to true to keep the original size of the selected shape while editing the model by cutting text to fit the shape. You can use the Resize to Fit Content command (a small black square on the bottom line of the selected shape) to adjust the size of the shape to fit the content completely. By default, the appropriate property defined for the diagram is used.
Suspend Auto-Displaying of Label	Same as Diagram	Same as Diagram true false	Set to true if you do not want to automatically show labels on the diagram pane while editing the model. You can use the Show Suspended labels command (a small black square on the selected path) to show suspended labels on the diagram pane. By default, the appropriate property defined for the diagram is used.
Label Orientation	Horizontal	Horizontal Vertical Automatic	Specify the orientation of the labels. Automatic label orientation will rotate labels of symbols according to the symbol orientation or edge orientation on which the symbol is placed.
Header in Bold	true	true/false	Shows the name of the symbol as bolded.
Text Vertical Position	Top	Top Center Bottom	Choose text and compartments' vertical position within the symbol.
Stereotype Color	RGB [0, 0, 0]	Custom	Change the color of the stereotype text label.
Stereotype Font	Arial 11	multi-list	Change the font style of the stereotype text label.

Show Stereotypes	Text and Icon	Text and Icon Text Icon Shape Image and Text Shape Image Do Not Display	Display stereotypes on symbols.
Show DSL Stereotypes	All	All Only Last None	Specify whether to show all, none, or only the last of the DSL Stereotypes (stereotypes that have DSL customization with the option hideMetatype = true) on a symbol.
Show Constraints	true	true/false	Displays constraints on symbols.
Show Owner	Do Not Display	Do Not Display Below Element Name In Same Line With Name Above Element Name	Displays the name of the owner model element (beneath the corresponding model element name - old style notation, in the same line with the name, or above the element name).
Wrap Words	false	true/false	Wraps words to a new line when text exceeds textbox (name, constraint, tagged value, conveyed information, extension point, or provided and required interfaces) width.
Show Tagged Values	true	true/false	Displays tagged values on symbols.
Tagged Values and Constraints Horizontal Position	Right	Center Left Right	Choose the text alignment position of tagged values and constraints on the shape.
Constraint Text Mode	Expression	Name Expression Name and Expression	Choose the constraint name or expression to be displayed on the symbol.
Show Element Properties	false	true/false	Choose if the properties are displayed on the symbol of the element.
Show Icons in Compartments	true	true/false	Set to true to show the icon before the element name in the compartment.
Show Element Type in Compartments	false	true/false	Set to true to show the element type before its name when the icons are hidden in the compartment.
Show Derived Sign	false	true/false	Set to true to show the derived sign (/) before the element name in the Tagged Values compartment.
Paths			
Fill Color	RGB [255, 255, 204]	Custom	Change the fill color of the shape.
Use Fill Color	true	true/false	Shapes are colored on the diagram.
Pen Color	RGB [66, 66, 66]	Custom	Change the color of the path or lines around shapes.
Text Color	RGB [0, 0, 0]	Custom	Change the color of the text.
Line Width	1	Real	Specify the line width of the symbol.
Font	Arial 11	multi-list	Change the font style of the text.

Show Number Tag Name	true	true/false	The option allows you to turn on or turn off the element number tag name on the symbol.
Element Number Display Mode	Before the element name	Above the element name Before the element name Do not display on symbol	The element number display mode option specifies the position on the symbol where the element number should be displayed.
Path Style	Rectilinear	Rectilinear Oblique Bezier	Choose the style for the selected path.
Rounded Corners	false	true/false	Path breakpoints rounded or not.
Constraint Text Mode	Expression	Name Expression Name and Expression	Choose the constraint name or expression to be displayed on the symbol.
Suspend Auto-Resizing of Shape	Same as Diagram	Same as Diagram true false	Set to true to keep the original size of the selected shape while editing the model by cutting text to fit the shape. You can use the Resize to Fit Content command (a small black square on the bottom line of the selected shape) to adjust the size of the shape to fit the content completely. By default, the appropriate property defined for the diagram is used.
Suspend Auto-Displaying of Label	Same as Diagram	Same as Diagram true false	Set to true if you do not want to automatically show labels on the diagram pane while editing the model. You can use the Show Suspended labels command (a small black square on the selected path) to show suspended labels on the diagram pane. By default, the appropriate property defined for the diagram is used.
Label Orientation	Horizontal	Horizontal Vertical Automatic	Specify the orientation of labels. Automatic label orientation will rotate labels of symbols according to the symbol orientation or edge orientation on which the symbol is placed.
Diagram			
Pen Color	RGB [66, 66, 66]	Custom	Change the color of the path or lines around shapes.
Text Color	RGB [0, 0, 0]	Custom	Change the color of the text.
Line Width	1	Real	Specify the line width of the symbol.
Font	Arial 11	multi-list	Change the font style of the text.
Show Number Tag Name	true	true/false	The option allows you to turn on or turn off the element number tag name on the symbol.
Element Number Display Mode	Before the element name	Above the element name Before the element name Do not display on symbol	The element number display mode option specifies the position on the symbol where the element number should be displayed.
Background Color	RGB [255, 255, 255]	Custom	Change the color of the diagram background.
Use Gradient Fill	true	true/false	Use gradient for the shape color.
3D Shadow	true	true/false	Display 3D shadow on shapes.
Show Grid	false	true/false	Displays gridlines on the diagram background.
Grid Size	7	2-30	Define the desired size for the gridlines.
Snap Paths to Grid	true	true/false	When moving paths, snap them to the grid.

Snap Shapes to Grid	true	true/false	When moving shapes, snap them to the grid.
Show Message Numbers	true	true/false	Show message numbers on the diagram.
Use Advanced Numbering	true	true/false	Use advanced numbering.
Show Activations	true	true/false	Display activation bars on lifelines in sequence diagrams.
Show Diagram Info	false	true/false	Display the table with the main information (name, author, creation and modification dates, etc.) about the diagram.
Show Owner	false	true/false	Displays diagram owner on the diagram tab.
Show Stereotypes	Text and Icon	Text and Icon Text Icon Shape Image and Text Shape Image Do Not Display	Display stereotypes on symbols.
Show DSL Stereotypes	All	All Only Last None	Specify whether to show all, none, or only the last of the DSL Stereotypes (stereotypes that have DSL customization with the option hideMetatype = true) on a symbol.
Use Stereotype	Diagram	Context Diagram	Use diagram stereotype or diagram context stereotype.
Stereotype Color	RGB [0, 0, 0]	Custom	Change the color of the stereotype text label.
Stereotype Font	Arial 11	multi-list	Change the font style of the stereotype text label.
Diagram Orientation	Vertical	Vertical Horizontal	Set a diagram orientation mode.
Add Line Jumps To	Horizontal Line	None Horizontal Line Vertical Line	Specified how line jumps are added to intersections of links on the diagram. None - specifies that the diagram use no line jumps. Horizontal Line - specified that the line jumps appear only on horizontal lines. Vertical Line - specified that the line jumps appear only on the vertical lines.
Suspend Auto-Resizing of Shape	Same as Diagram	Same as Diagram true false	Set to true to keep the original size of the selected shape while editing the model by cutting text to fit the shape. You can use the Resize to Fit Content command (a small black square on the bottom line of the selected shape) to adjust the size of the shape to fit the content completely. By default, the appropriate property defined for the diagram is used.
Suspend Auto-Displaying of Label	Same as Diagram	Same as Diagram true false	Set to true if you do not want to automatically show labels on the diagram pane while editing the model. You can use the Show Suspended labels command (a small black square on the selected path) to show suspended labels on the diagram pane. By default, the appropriate property defined for the diagram is used.
Show Diagram Frame	true	true/false	Displays diagram frame on the diagram.
Show Abbreviated Type	false	true/false	Shows full/abbreviated diagram keyword type on the diagram frame header.
Show Diagram Name	true	true/false	The diagram name is displayed or hidden in the diagram frame header.
Show Diagram Type	false	true/false	The diagram kind is displayed or hidden in the diagram frame header.
Show Parameters	true	true/false	The diagram context element parameters (if there are any) are displayed in the diagram frame header.
Show Context Name	true	true/false	The diagram context element name is displayed or hidden in the diagram frame header.

Show Context Type	false	true/false	The diagram context element type is displayed or hidden in the diagram frame header.
Show Context Kind	true	true/false	The context kind is a keyword predefined in UML (e.g., package, class, activity).
Autosize	false	true/false	Adjusts the size of a symbol to the contained information so that it uses minimum space.
Aspect Ratio	Unspecified	Unspecified 1:1 4:3 3:4 16:9 9:16 A4 Landscape A4 Portrait US Letter Landscape US Letter Portrait	Choose the diagram frame aspect ratio from the list or define a new one. the format of your defined aspect ratio should be 'W:H'.
Use Rounded Corners	true	true/false	Use rounded corners on the diagram frame. Diagram frames in Activity and State Machine diagrams can be represented as rounded rectangles.
Suspend Auto-Resizing of Shapes	Same as Diagram	Same as Diagram true false	Set to true to keep the original size of shapes while editing the model by cutting text to fit inside the shape. You can use the Resize to Fit Content command (a small black square on the bottom line of the selected shape) to adjust the size of the shape to fit the content completely.
Stereotypes			
Create elements' properties by stereotype. These properties will be applied when the symbol of the stereotyped element is created on the diagram pane.			
Default model properties			
In the Default model properties tab, select an element and change its default property values (the element will have these values after its creation). To change the default value only for a specific diagram, go to Diagrams main menu / Customize and edit the selected element properties.			
Code Engineering			
Set general code generation or code reversing options. Also, configure generated code formatting styles for the selected programming languages. Subcategories:			
Code Generation			
Reverse			
Java Language Options			
C++ Language Options			
CORBA IDL 3.0 Language Options			