

Mapping ports on a Part type change

On a [Part](#) type change, [ports](#) of the original Part type are automatically replaced with ports of a new type. Connectors are reconnected accordingly too.

Ports are mapped automatically if particular rules are met. Otherwise, the **Port Mapping** dialog appears.

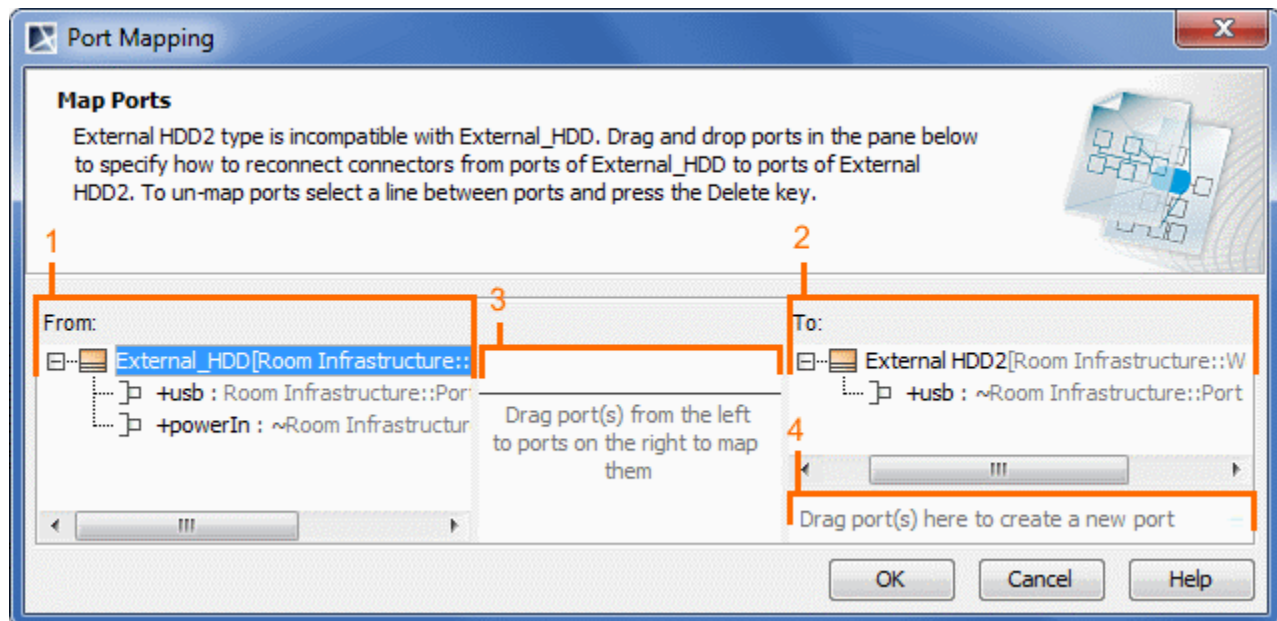
Rules of automatic port mapping

Ports are mapped automatically:

- When the following properties of the Port of the original Part type are the same as the properties of the Port of the new part type:
 - **Port type and name**
 - **Port type** (note that only one Port of the new Part type has the same type as Port(s) of the original Part type)
 - **Port name** (valid if the type of the original Port is **not** specified)
- Ports of the original Part type and the Port of the new Part type has the same [Interface](#).
- When the new Part type is subtype of the original Part type (inherited ports are mapped automatically with ports which they are inherited).
- When the ports of a new type redefines ports of original Part type.

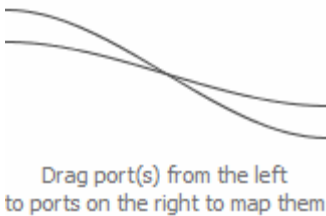
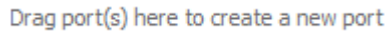
The Port Mapping dialog

The **Port Mapping** dialog appears on changing a Part type when ports of the type cannot be mapped automatically.




See the elements of the **Port Mapping** dialog described in the following table.

| Element number | Element | Description |
|----------------|---------|--|
| 1 | From: | Lists the type of the Part from which you want to make a replacement. Ports of the type are listed under the type. |
| 2 | To: | Lists the type of the Part to which you want to make a replacement. Ports of the type are listed under the type. |

| | | |
|---|---|--|
| 3 |  | Displays lines between the mapped ports. |
| 4 |  | Creates a new port in the To list. In the From list, click a port and then drag it to the "Drag port(s) here to create a new port" box. The port for the new type will be created and mapped. |


To map ports in the **Port Mapping** dialog

1. Select a Port in the **From** box.
2. Drag the selected Port onto a Port in the **To** box. The ports are mapped and the line between them is displayed.

 You can also select multiple number of ports in the **From** box and drag onto a port in the **To** box. The selected ports will be mapped with the Port.

To create a new Port in the **To** box

1. Select a Port in the **From** box.
2. Drag the selected Port onto the following box: "*Drag port(s) here to create a new port*". The new Port is created in the **To** box and ports are mapped.

 You can also select multiple number of ports in the **From** box and drag onto the box: "*Drag port(s) here to create a new port*". The selected number of ports will be created.

To un-map ports in the **Port Mapping** dialog

1. Select the line between the mapped ports.
2. Press the **Delete** key. The line is deleted and ports unmapped.