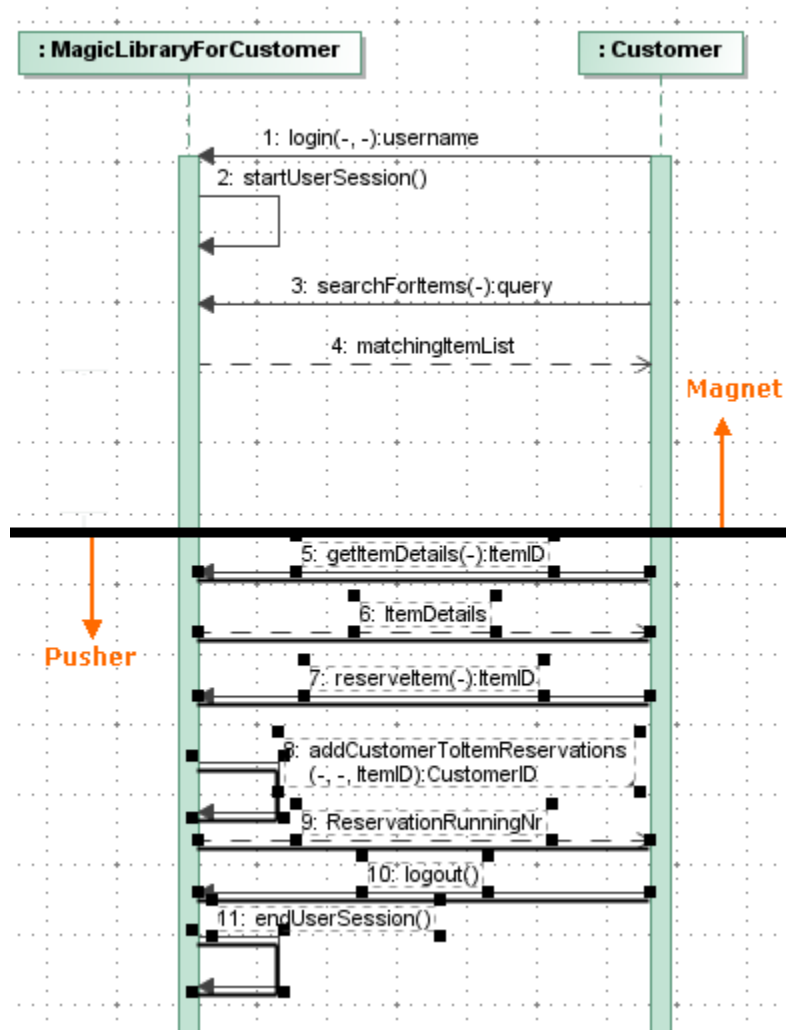


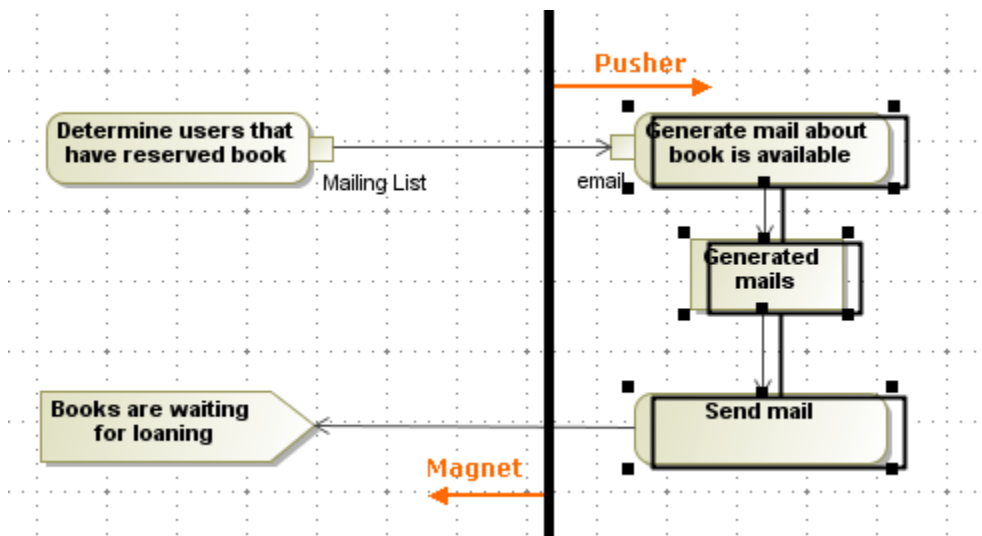
Pusher and magnet

This feature allows for rearranging element symbols on a diagram easily. The Pusher moves a group of symbols towards the pushing direction, thus creating an empty space for adding new symbols to a diagram.


Magnet works in the opposite way. It moves the selected group of symbols to an empty space on a diagram.

Now you do not need to select separate symbols on a diagram to move them to another location. Just click the **Pusher** or **Magnet** button on the diagram palette and move the whole group of symbols toward the direction you need.






To push the diagram fragment

1. On the diagram palette, click the  Pusher button.
2. On the diagram pane, click the diagram fragment you need to move, and holding the right mouse button, drag it to the left or down.

To pull the diagram fragment

1. On the diagram palette, click the  Magnet button.
2. On the diagram pane, click the diagram fragment you need to move, and holding the right mouse button, drag it to the right or up.

Related pages

- [Diagramming](#)