

Automated Package Structure Creation

Instead of copy-pasting an existing package structure, you can create one automatically. You can do that by creating your own package structure configurations first and then applying them to your model via the **Create Package Structure** action.

Creating a package structure configuration

To create a package structure configuration

1. Create a configuration element, which can be any named element (e.g. a Package named 'SubsystemPackages').
2. Right-click the configuration element. In the shortcut menu, click **Stereotype** > select «packageStructureConfiguration» from the menu, and click **Apply**.
3. Right-click the configuration element and open its Specification window.
4. In the Specification window, select the **Tags** property group.
5. Under «packageStructureConfiguration» select **applyToElements** and click the **Create Value** button.
6. In the **Select Elements** dialog, select the element types for which the **Create Package Structure** action will be available.

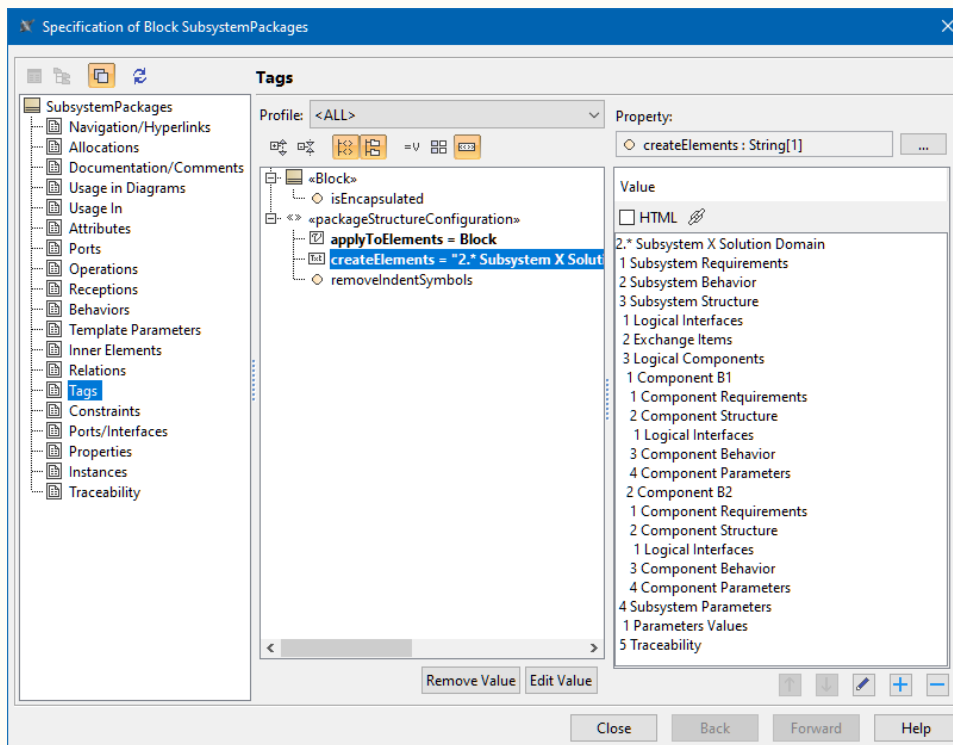


Use the **Multiple Selection** option to specify multiple element types.

7. Under «packageStructureConfiguration» select **CreateElements** and click the **Create Value** button.
8. In the **Value** box, create a list of packages that will be created.



The packages' nesting structure should be defined using spacing as indents (see the image below). If, in addition to spacing, any indent symbols (e.g., bullet points, numbers, etc.) are used to define the structure, see **Step 9**.



9. (Optional) If the structure defined in the **CreateElements** tag is specified using any indent symbols (e.g., bullet points, numbers, etc.) that you do not want to include in the created packages' names, select **RemoveIndentSymbols**, click the **Edit Value** button and set it to **true**.



By default, the **RemoveIndentSymbols** tag is set to **false**.

10. Click **Close**.

Creating a package structure automatically

To create a package structure automatically

1. Right-click an element for which you want to create the package structure defined in the configuration. In the shortcut menu, click **Tools > Create Package Structure**. The **Select Package Structure** dialog opens.



The **Create Package Structure** action is only available for elements specified in the **applyToElements** tag of the package structure configuration.

2. In the **Select Package Structure** dialog, select the package structure configuration element that defines the package structure you want to create. Click **OK**.
The selected package structure is created for the element.



MagicGrid project templates contain two package structure configurations included by default. To learn more, see the [Using packages](#) page.